

SALE

LAND

VILLAGE AT KNAPP'S CROSSING LAND



2300 E. BELTLINE AVE. NE, GRAND RAPIDS, MI 49525

PROPERTY HIGHLIGHTS

- 7.51 Acres
- Strong demographics
- Access to E. Beltline, Knapp St. and 3 Mile Rd.
- Adjacent to and part of the Village at Knapp's Crossing
- Located in Grand Rapids Township and ready for development
- Close proximity to banks, Celebration Cinema, restaurants and Spectrum Health's NE campus

OFFERING SUMMARY

| | |
|-------------|-------------|
| Sale Price: | \$1,800,000 |
| Lot Size: | 7.51 Acres |
| Zoning: | Commercial |
| Price / SF: | \$5.50 |

| DEMOGRAPHICS | 1 MILE | 3 MILES | 5 MILES |
|-------------------|----------|----------|----------|
| Total Households | 1,047 | 14,050 | 47,995 |
| Total Population | 3,035 | 36,563 | 124,270 |
| Average HH Income | \$94,371 | \$75,962 | \$72,924 |

BRADLEY COMPANY
 220 Lyon St. NW, Suite 400
 Grand Rapids, MI 49503
 616.254.0005

JEFF TUCKER
 Senior Managing Director, Brokerage | Principal
 616.881.9321
 jtucker@bradleyco.com

DREW NELSON
 Senior Advisor
 616.975.3739
 dnelson@bradleyco.com



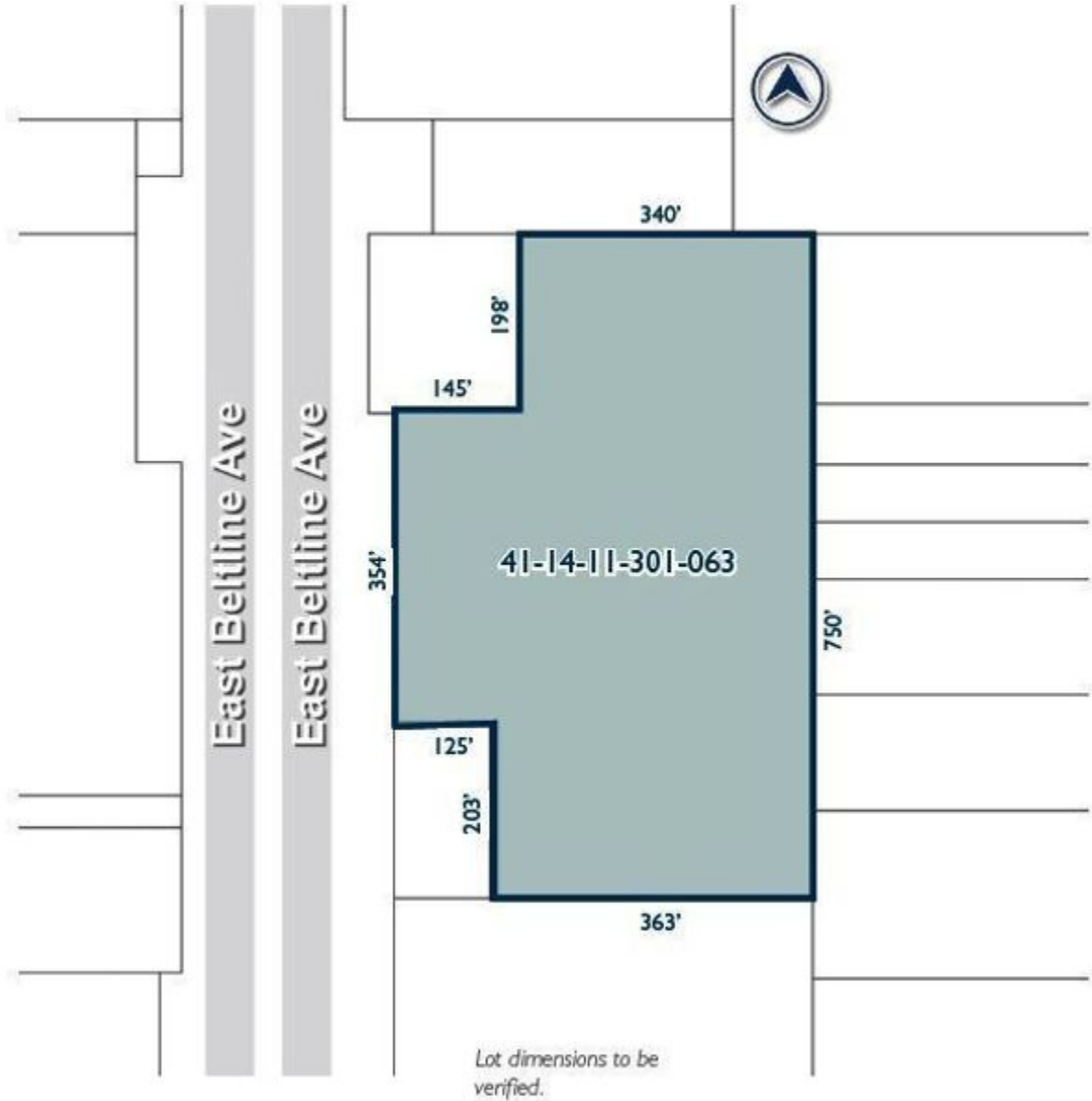
BRADLEYCO.COM



2300 E. BELTLINE AVE. NE, GRAND RAPIDS, MI 49525

SALE

LAND



JEFF TUCKER
Senior Managing Director, Brokerage | Principal
616.881.9321
jtucker@bradleyco.com

DREW NELSON
Senior Advisor
616.975.3739
dnelson@bradleyco.com