



BRADLEY COMPANY

220 Lyon St. NW, Suite 400
Grand Rapids, MI 49503
616.254.0005



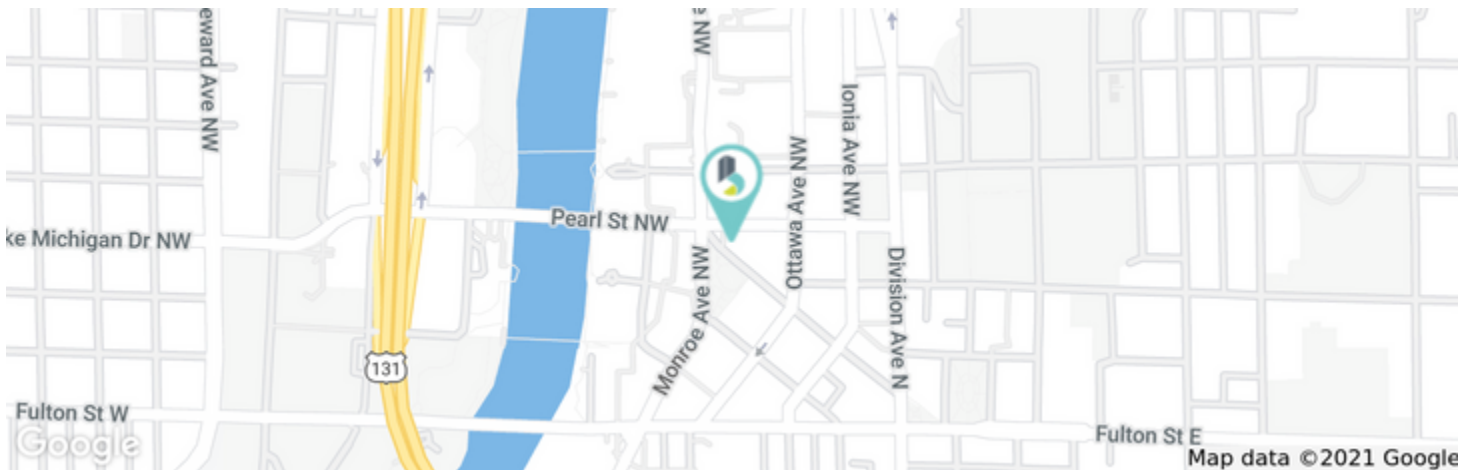
BRADLEYCO.COM



146 MONROE CENTER ST. NW, GRAND RAPIDS, MI 49503

SUBLEASE

OFFICE



PROPERTY OVERVIEW

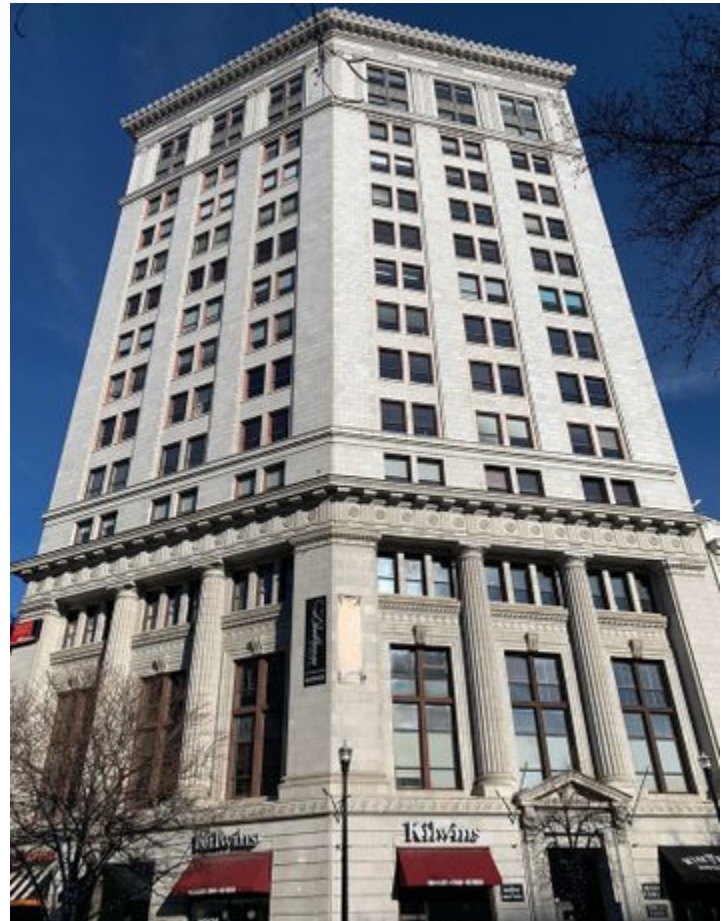
Fantastic opportunity to sublease space below market rate in one of the most well know buildings in Grand Rapids. Located in the heart of Grand Rapids' Central Business District, space is move-in ready with large windows, terrific views and a combination of both private office and collaboration spaces. Spaces can be leased together or separately.

PROPERTY HIGHLIGHTS

- Unparalleled location in the heart of Grand Rapids Central Business District
- Outstanding value
- Walkable to downtown restaurants, hotels, and entertainment venues
- On-site property management

AVAILABLE SPACES

SPACE	LEASE RATE	SIZE (SF)
418	\$16.00 SF/yr	1,457 SF
406	\$16.00 SF/yr	429 SF
406 + 418	\$16.00 SF/yr	1,886 SF



DREW NELSON

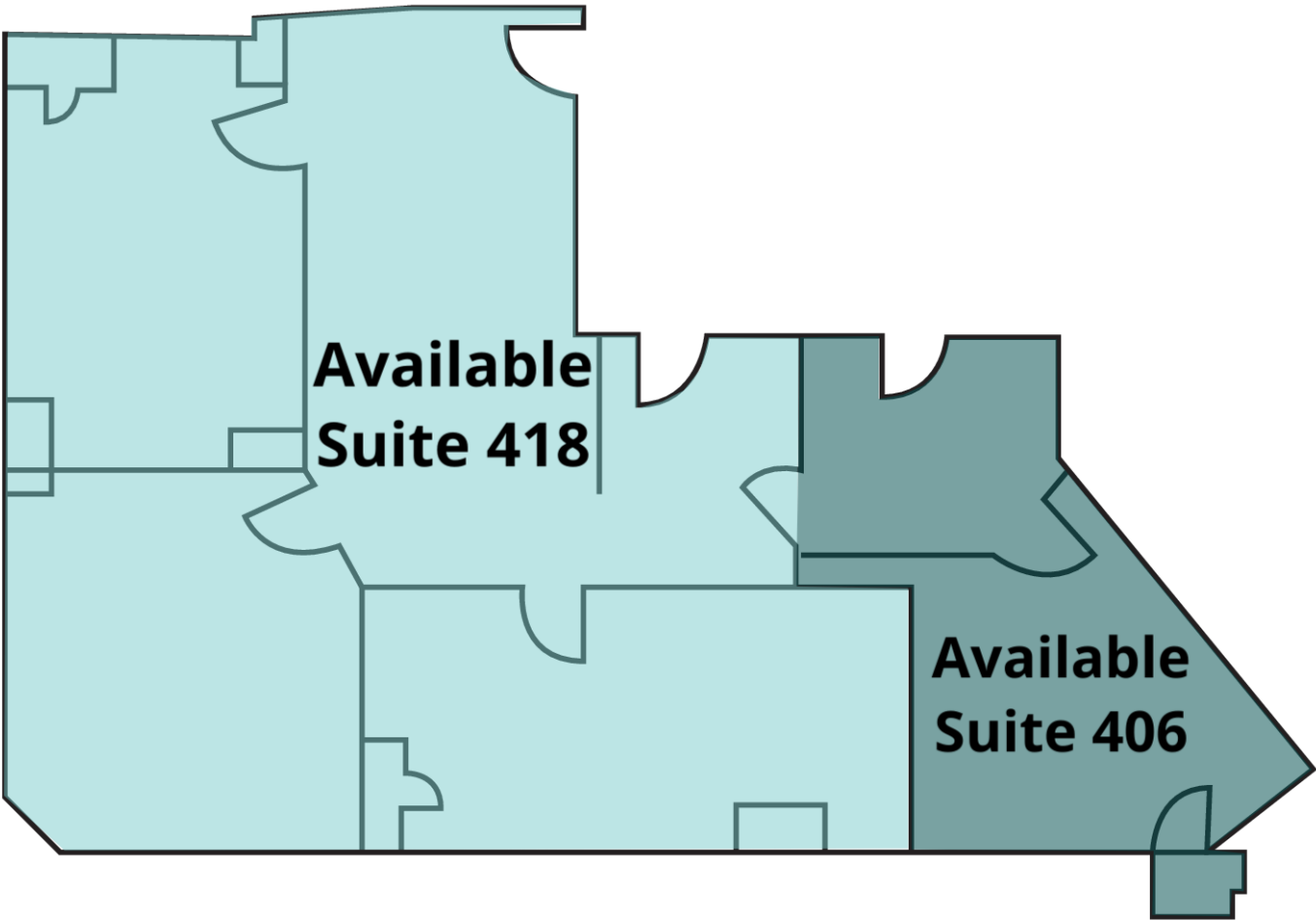
Senior Advisor
616.975.3739
dnelson@bradleyco.com



146 MONROE CENTER ST. NW, GRAND RAPIDS, MI 49503

SUBLEASE

OFFICE



AVAILABLE SPACES

SUITE	TENANT	SIZE	TYPE	RATE
■ 418	Available	1,457 SF	Modified Gross	\$16.00 SF/yr
■ 406	Available	429 SF	Modified Gross	\$16.00 SF/yr
■ 406 + 418	Available	1,886 SF	Modified Gross	\$16.00 SF/yr

DREW NELSON
Senior Advisor
616.975.3739
dnelson@bradleyco.com

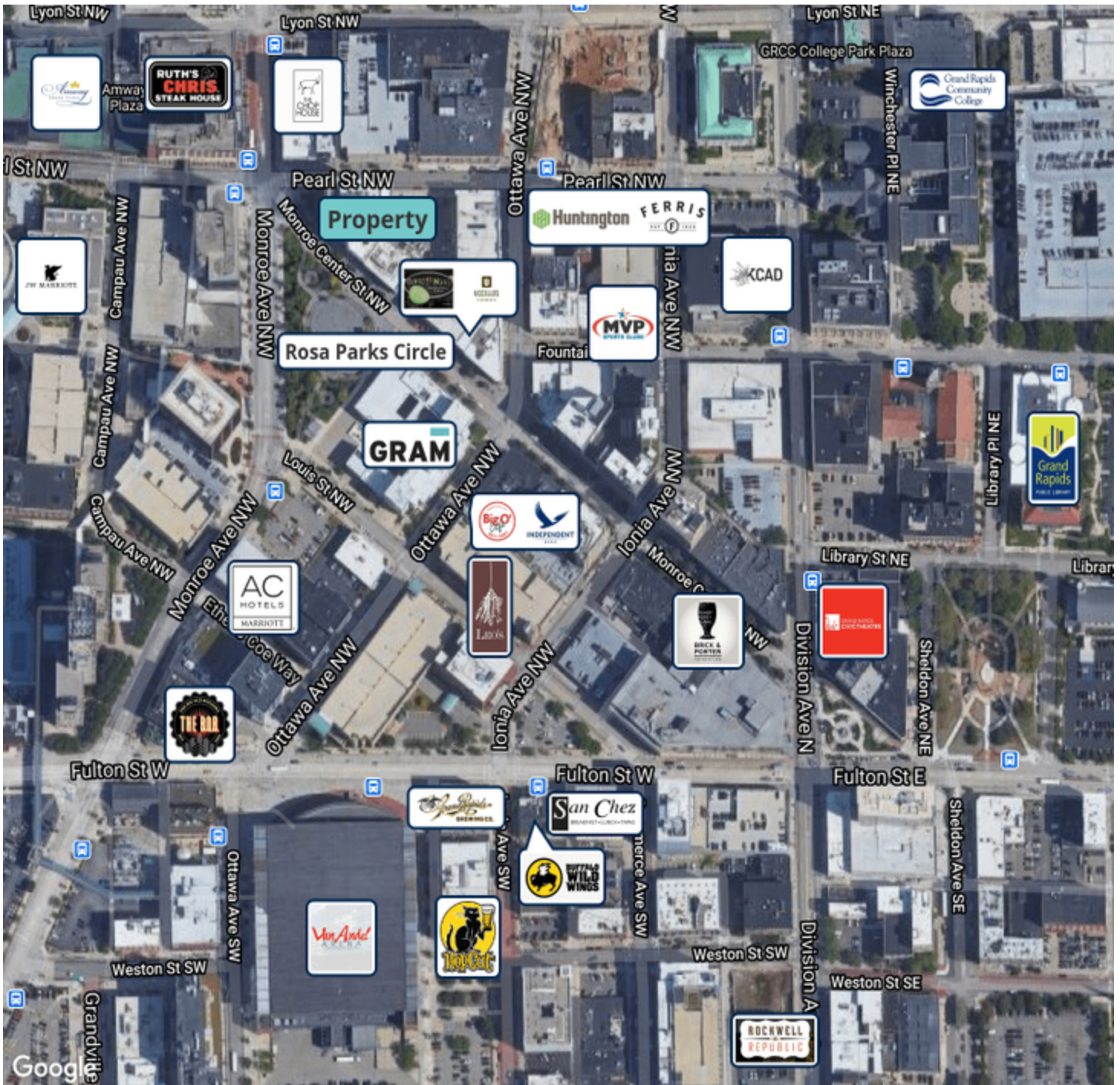


MEET YOUR NEIGHBORS

146 MONROE CENTER ST. NW, GRAND RAPIDS, MI 49503

SUBLEASE

OFFICE



DREW NELSON

Senior Advisor

616.975.3739

dnelson@bradleyco.com



146 MONROE CENTER ST. NW, GRAND RAPIDS, MI 49503

SUBLEASE

OFFICE



DREW NELSON
Senior Advisor
616.975.3739
dnelson@bradleyco.com



146 MONROE CENTER ST. NW, GRAND RAPIDS, MI 49503

SUBLEASE

OFFICE



“West Michigan was the ideal location for our cybersecurity research lab. The region’s low cost of doing business, combined with its talented pool of technology workers will make our company more competitive.”

Brian DeMuth | CEO | GRIMM

WELCOME TO WEST MICHIGAN

HOME TO ONE
OF THE FASTEST
GROWING
ECONOMIES
IN THE U.S.

Located between Chicago and Detroit, West Michigan is a growing region of more than 1.5 million people and counting. At its core is the thriving and vibrant city of Grand Rapids, the second largest city in the state.

With a strong business climate and exceptionally high quality of life, it is no surprise businesses and talent are flocking to the region. More than 130 international companies are located here, as well as four of Forbes Largest Private Companies. The region is home to the global headquarters of industry leaders like Amway, Steelcase, Herman Miller, Haworth, BISSELL, Wolverine Worldwide, and more.

There is an energy pulsating from West Michigan that is felt throughout the Midwest. Our business and community leaders have set in motion an unprecedented level of growth and investment, cementing our place as a world-class center for advanced manufacturing, life science and medical devices, food processing, and technology.

DREW NELSON

Senior Advisor
616.975.3739
dnelson@bradleyco.com



146 MONROE CENTER ST. NW, GRAND RAPIDS, MI 49503

SUBLEASE

OFFICE

TOP INDUSTRY CLUSTERS

GROW, INNOVATE, AND SUCCEED IN WEST MICHIGAN

Since its introduction as the Furniture City in 1876, West Michigan has been a leading center for quality, technical expertise, and innovation. The economy has since diversified beyond its furniture beginnings, and is now a center for manufacturing excellence, life science discovery, and technological innovation.

The following industries are driving the growth of the Grand Rapids region.

ADVANCED MANUFACTURING

West Michigan is home to one of the nation's largest and most diverse manufacturing sectors. We are national leaders in plastics, biopharmaceuticals, medical devices, production technology, automotive, office furniture, aerospace, and more. If you can dream it, we can make it.



2,500+
Manufacturers

\$6.7B
In Exports
Annually

FOOD PROCESSING AND AGRIBUSINESS

Abundant natural resources combined with one of the most agriculturally diverse regions in the country has created a recipe for success in West Michigan. With over \$1.5 billion in economic impact, this industry is an economic powerhouse.

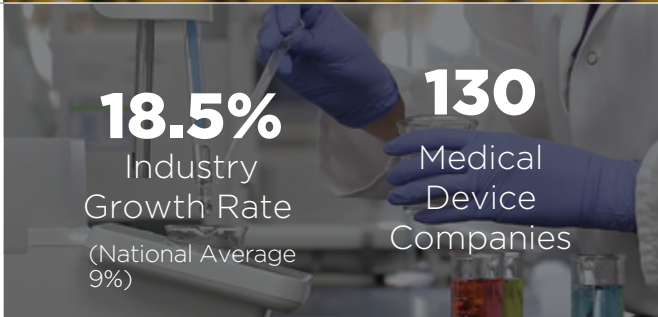


13.3%
Industry
Growth Rate
(National Average
9.4%)

1.94
Location
Quotient

LIFE SCIENCES AND MEDICAL DEVICES

West Michigan is home to some of the most advanced healthcare, research, and education facilities in the Midwest. This collaborative environment is driving innovation and shaping the future of medical device technology and manufacturing.



18.5%
Industry
Growth Rate
(National Average
9%)

130
Medical
Device
Companies

INFORMATION TECHNOLOGY AND COMMUNICATIONS

West Michigan's growing tech industry is powered by some of the best talent in the nation. From cybersecurity to custom software development, this industry is solving the future's most pressing challenges.



13.5%
Industry
Growth

Employment
Costs
30%
Below National
Average

DREW NELSON

Senior Advisor
616.975.3739
dnelson@bradleyco.com



146 MONROE CENTER ST. NW, GRAND RAPIDS, MI 49503

SUBLEASE

OFFICE

WEST MICHIGAN BY THE NUMBERS

13-COUNTY REGION POPULATION DATA

1,606,562
POPULATION

36.9
MEDIAN AGE

584,482
HOUSEHOLDS

832,429
LABOR FORCE

85,483
COLLEGE
ENROLLMENT

DATA SOURCES: Economic Modeling Specialists International (EMSI), US Census Bureau American Community Survey (ACS), Bureau of Labor Statistics Local Area Unemployment Statistics

COLLEGES & UNIVERSITIES

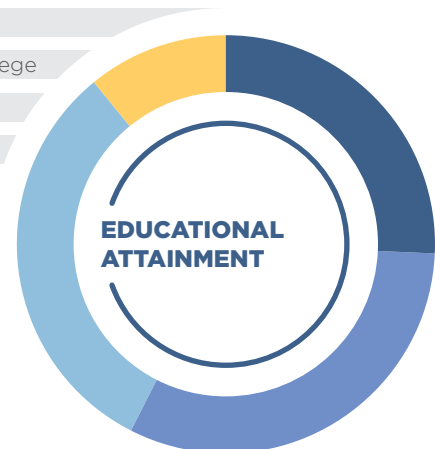
ENROLLMENT

Grand Valley State University	25,049
Grand Rapids Community College	14,269
Ferris State University	13,798
Davenport University - Western Region	7,160
Muskegon Community College	4,311
Calvin College	3,840
Baker College	3,481
Hope College	3,150
Cornerstone University	2,361
Aquinas College	1,716
Montcalm Community College	1,691
Kendall College of Art and Design	1,214
Michigan State University - West	977
Western Michigan University - Grand Rapids	900
Other Area Colleges & Universities	1,566

Total**85,483****DATA SOURCE:** The Right Place, Inc.

#1 Top States for Auto Manufacturing Jobs – Michigan
Bureau of Labor Statistics

25.7%	Bachelor's or Higher
31.8%	Associate/Some College
31.6%	High School Diploma
10.9%	Other

**DATA SOURCE:** US Census Bureau ACS

STEM DEGREE COMPLETIONS

COMPLETIONS

Science (Life & Physical)	1,426
Technology	659
Engineering	1,107
Mathematics	190
Health Sciences	3,769

DREW NELSON

Senior Advisor
616.975.3739

dnelson@bradleyco.com

DATA SOURCE: EMSI