

**70 - 88 Howard St., New London, CT 06320**



- ◆ **Office/Retail spaces available**
- ◆ **1,500 - 3,350 sf available on 1st & 2nd floors**
- ◆ **Pristine setting on Shaw's Cove adjacent to marina**
- ◆ **Ample parking**
- ◆ **13,100 Average Daily Traffic count**

**F  
O  
R  
L  
E  
A  
S  
E**

**Starting at \$1,820/mo  
plus utilities**

Contact Norm Peck

**PEQUOT COMMERCIAL**

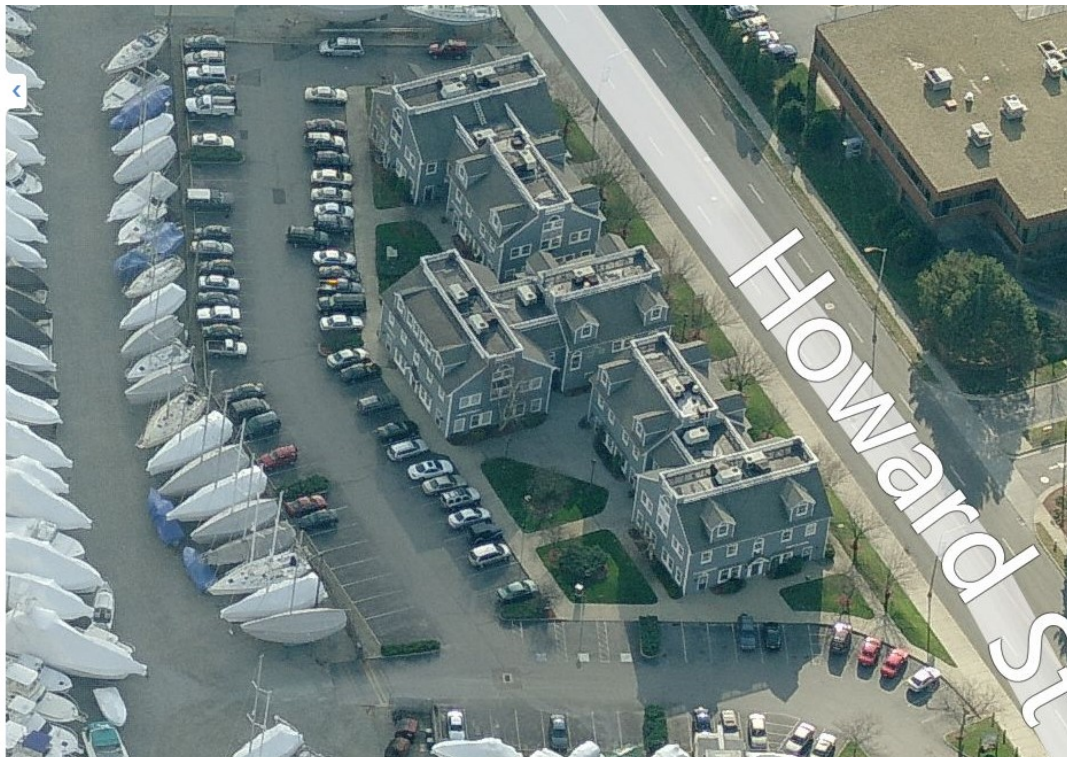
860-447-9570, x133

npeck@pequotcommercial.com



# DEMOGRAPHICS

	3 Mile	5 Mile	10 Mile
Population	50,900	74,074	142,736
Number of Households	21,655	30,643	59,612
Household Income			
\$0 - \$30,000	31.25%	26.56%	20.44%
\$30,000—\$60,000	25.35%	23.78%	21.11%
\$60,000—\$100,000	22.67%	23.95%	23.87%
\$100,000 +	20.75%	25.71%	34.57%



## Zone C-1

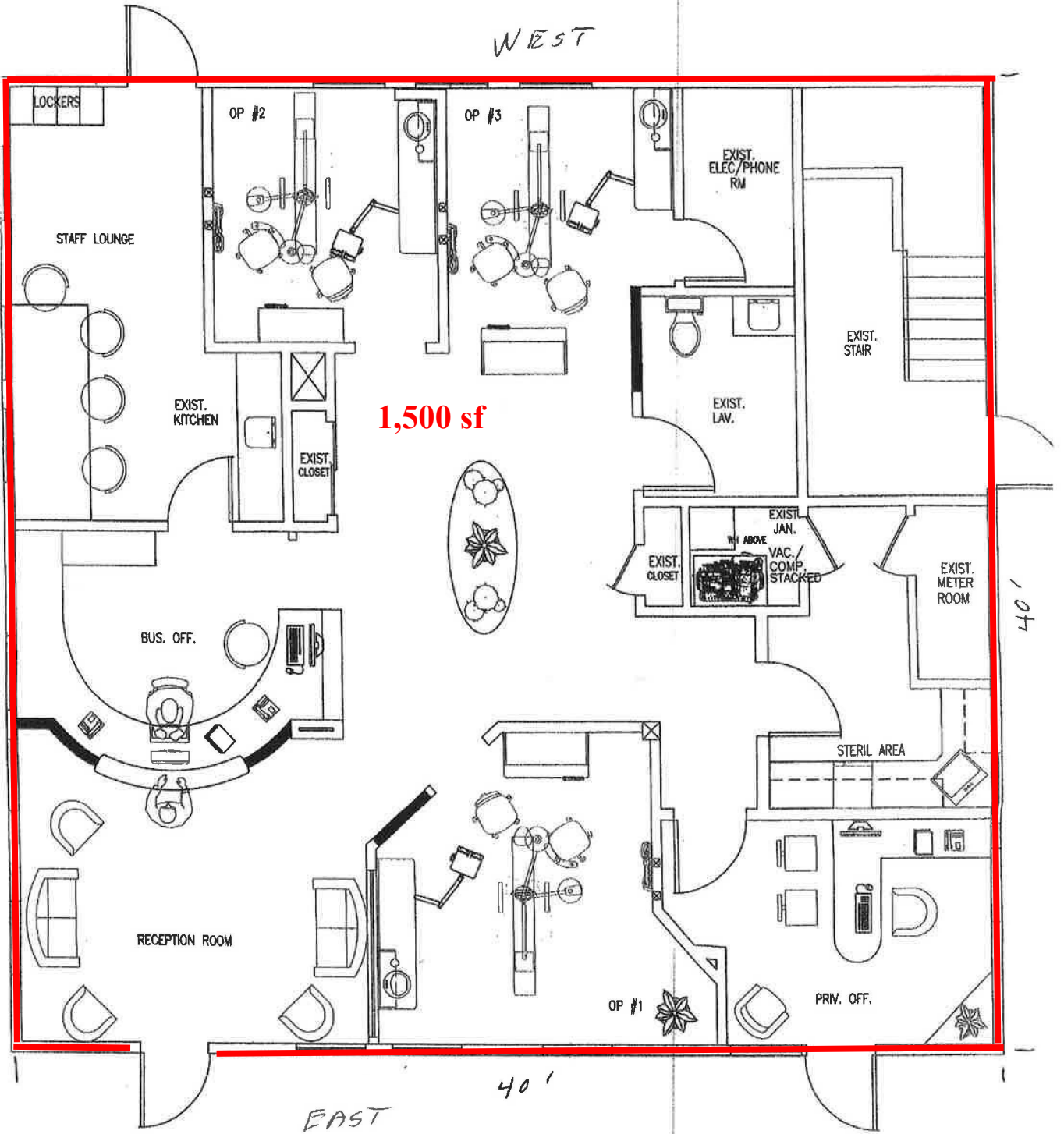
### PERMITTED USES INCLUDE:

- Office
- Most marine uses
- Retail
- Service
- Restaurant
- Child Day Care
- School ...





1ST FLOOR 70 HOWARD ST  
1500 sq. ft



1850 59. ft

SECOND FLOOR 70 HOWARD ST

