

LEASE

OFFICE



8535 BYRON COMMERCE DR. SW



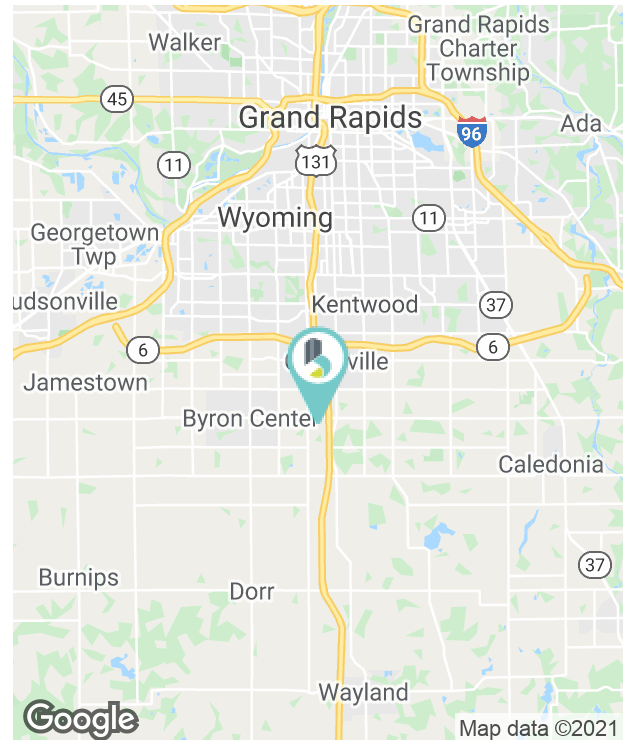
8535 BYRON COMMERCE DR. SW, BYRON CENTER, MI 49315

PROPERTY OVERVIEW

This space for sublease is located off of the US-131/84th Street Exit, just west of the Tanger Outlet Mall! This suite is a perimeter office that allows for the use of conference room, kitchenette and break room, private restrooms, and modern lobby. This is the perfect space for an attorney, accountant, marketing firm, IT firm, engineering firm, financial planning firm, advertising firm, or any other general office use.

PROPERTY HIGHLIGHTS

- Professionally landscaped
- Multiple restaurants and shopping within walking distance
- Close proximity to US-131 freeway
- Modern, office tech feel



LEASE RATE **\$750/MONTH (GROSS)**

Suite B-1:	120 SF
Suite B-2:	120 SF
Building Size:	16,416 SF

BRADLEY COMPANY **CHIP BOWLING**
220 Lyon St. NW, Suite 400 Senior Vice President
Grand Rapids, MI 49503 616.915.9080
616.254.0005 cbowling@bradleyco.com





8535 BYRON COMMERCE DR. SW, BYRON CENTER, MI 49315

LEASE

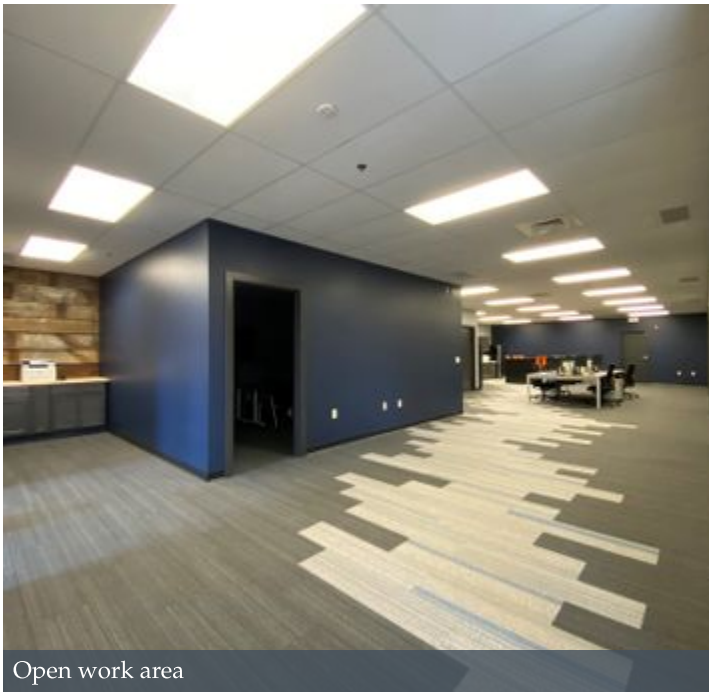
OFFICE



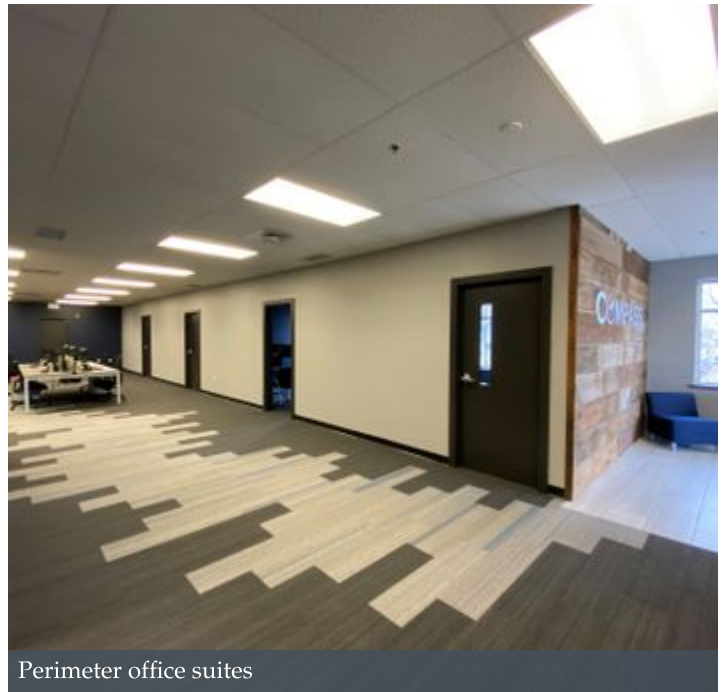
Front entrance



Lobby



Open work area



Perimeter office suites

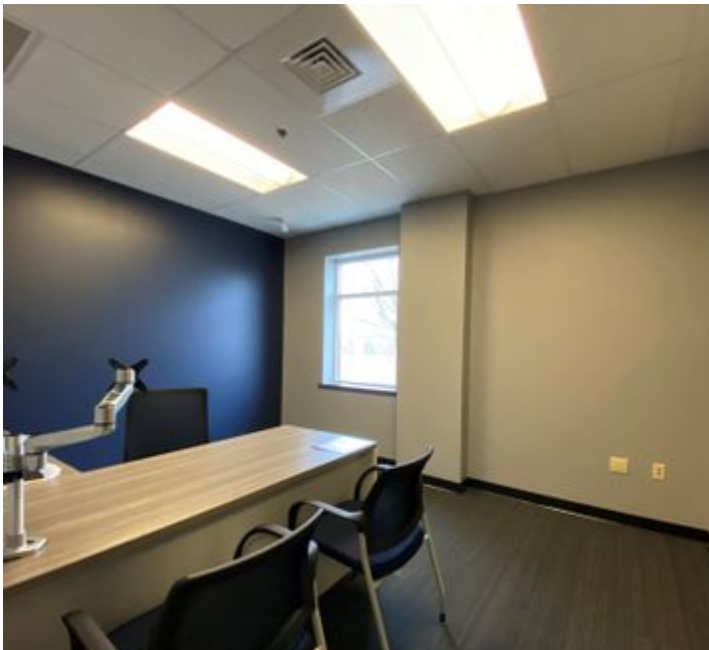
CHIP BOWLING
Senior Vice President
616.915.9080
cbowling@bradleyco.com



8535 BYRON COMMERCE DR. SW, BYRON CENTER, MI 49315

LEASE

OFFICE



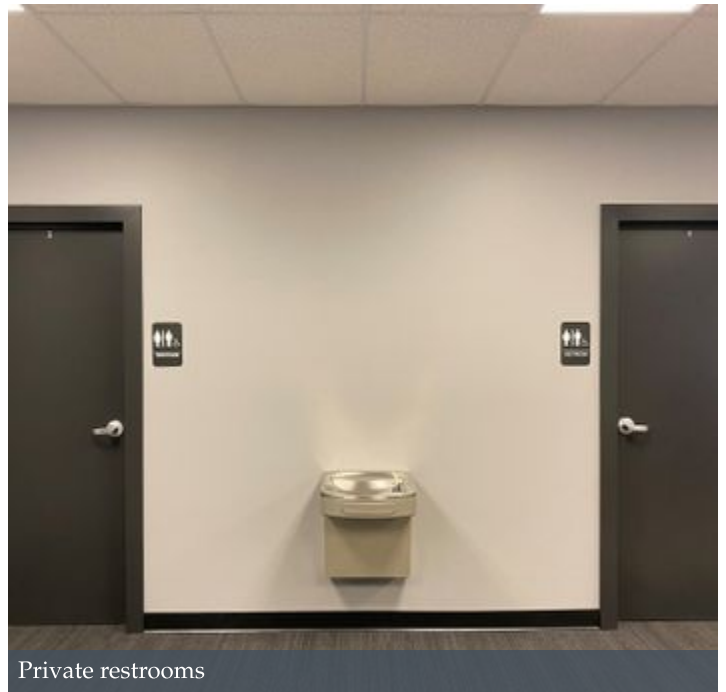
Private office



Private office



Kitchenette and break area



Private restrooms

CHIP BOWLING
Senior Vice President
616.915.9080
cbowling@bradleyco.com



MEET YOUR NEIGHBORS

8535 BYRON COMMERCE DR. SW, BYRON CENTER, MI 49315

LEASE

OFFICE



CHIP BOWLING
 Senior Vice President
 616.915.9080
 cbowling@bradleyco.com

©2021 Bradley Company, LLC and affiliates. Use of any third party name or mark is for informational purposes only and does not indicate sponsorship or endorsement by such party. Not all information has been independently verified, and the presenting broker makes no guarantee about its accuracy. Any projections, opinions, or estimates are for example only. Before completing a real estate transaction, you and your advisors should conduct an independent investigation of the property to determine its suitability for your needs.