

# Office/Dental/Medical Office

OFFICE FOR LEASE

4310 Colby Avenue  
Everett WA 98203

## THE OPPORTUNITY

Well maintained Medical/Dental three-story office building with elevator and ample surface parking. Highly visible corner with prominent signage on Colby Avenue with close proximity to Interstate-5 and Evergreen Way. Different configurations available including some rare small space opportunities.



## HIGHLIGHTS

Average Household Income  
3 Mile - \$76,990  
5 Mile - \$79,973

Easy Access from I-5 and Evergreen Way

Highly Visible Location with over 162,000 vehicles per day at I-5 & 41st Street (.41 miles from site)

Located in Rapid Growing Area



Christian Decker (206) 283-5212  
www.wccommercialrealty.com

# WCCR

West Coast Commercial Realty

Retail  
Office  
Investment

DISCLAIMER: The above information has been secured from sources believed to be reliable, however, no representations are made to its accuracy. Prospective tenants or buyers should consult their professional advisors and conduct their own independent investigation. Site plan and configuration are subject to change. Properties are subject to change in price and/or availability without notice. West Coast Commercial Realty, LLC



# Office/Dental/Medical Office

OFFICE FOR LEASE

4310 Colby Avenue  
Everett WA 98203



Christian Decker (206) 283-5212  
www.wccommercialrealty.com

DISCLAIMER: The above information has been secured from sources believed to be reliable, however, no representations are made to its accuracy. Prospective tenants or buyers should consult their professional advisors and conduct their own independent investigation. Site plan and configuration are subject to change. Properties are subject to change in price and/or availability without notice. West Coast Commercial Realty, LLC

## WCCR

West Coast Commercial Realty

Retail  
Office  
Investment

# Office/Dental/Medical Office

OFFICE FOR LEASE

4310 Colby Avenue  
Everett WA 98203

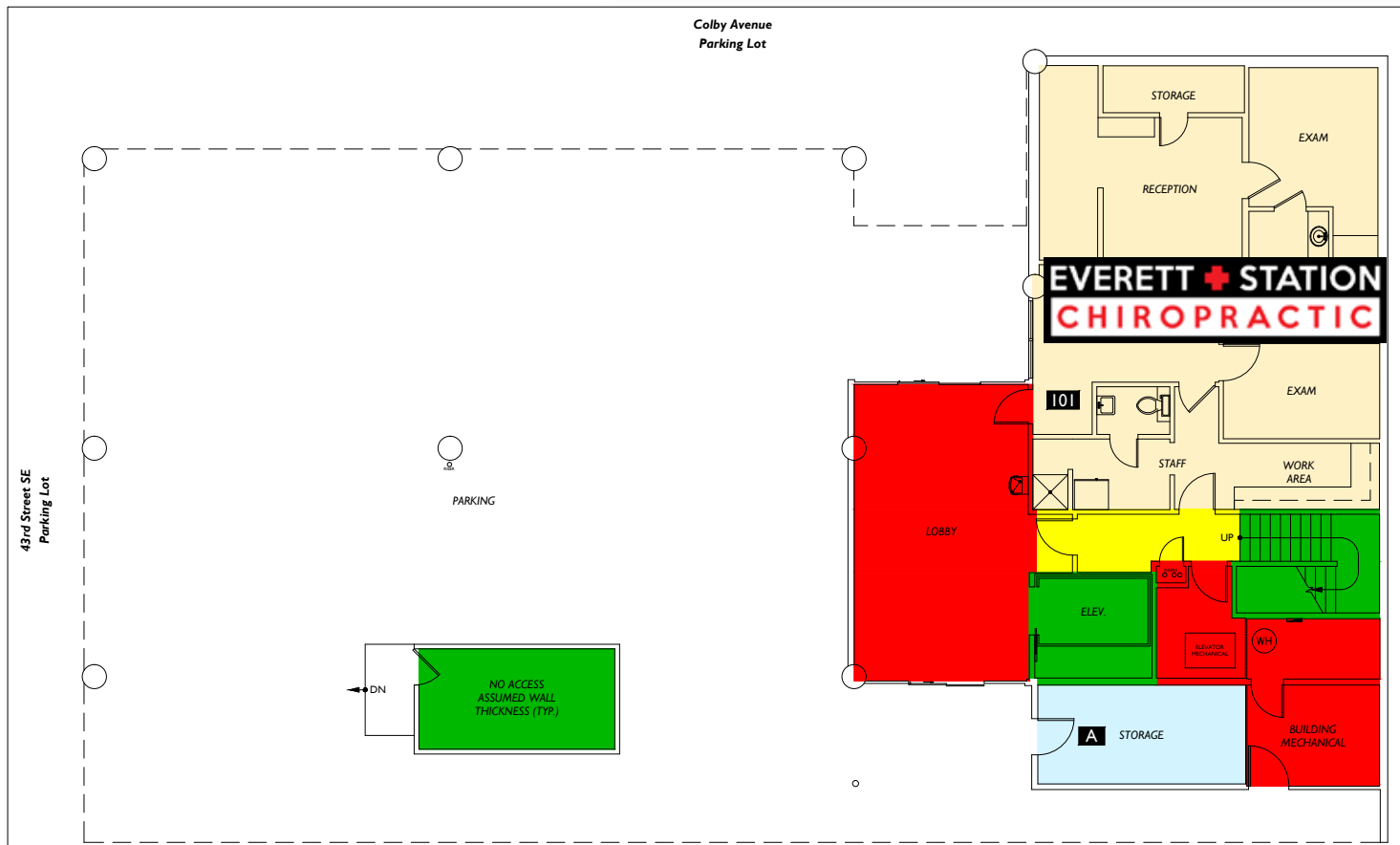
## FLOOR PLAN : First Floor



Suite 101-

**LEASED**

(Do Not Disturb Tenant)



Christian Decker (206) 283-5212  
www.wccommercialrealty.com

DISCLAIMER: The above information has been secured from sources believed to be reliable, however, no representations are made to its accuracy. Prospective tenants or buyers should consult their professional advisors and conduct their own independent investigation. Site plan and configuration are subject to change. Properties are subject to change in price and/or availability without notice. West Coast Commercial Realty, LLC

# WCCR

West Coast Commercial Realty

Retail  
Office  
Investment

# Office/Dental/Medical Office

OFFICE FOR LEASE

4310 Colby Avenue  
Everett WA 98203

## FLOOR PLAN : Second Floor

Suite 201 -

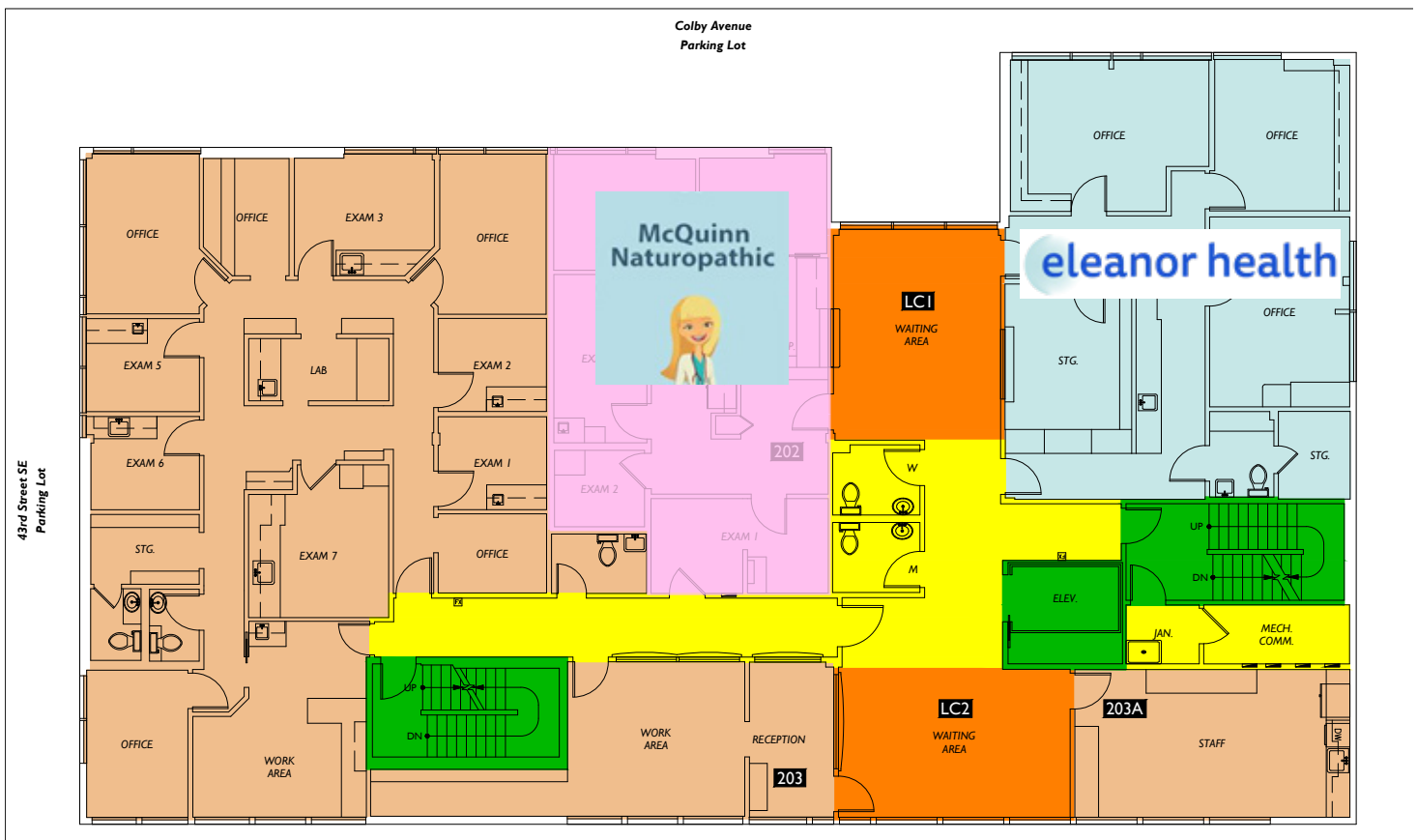
**LEASED**

(Do Not Disturb Tenant)

Suite 202 -

**LEASED**

(Do Not Disturb Tenant)



Christian Decker (206) 283-5212  
www.wccommercialrealty.com

DISCLAIMER: The above information has been secured from sources believed to be reliable, however, no representations are made to its accuracy. Prospective tenants or buyers should consult their professional advisors and conduct their own independent investigation. Site plan and configuration are subject to change. Properties are subject to change in price and/or availability without notice. West Coast Commercial Realty, LLC

# WCCR

West Coast Commercial Realty

Retail  
Office  
Investment

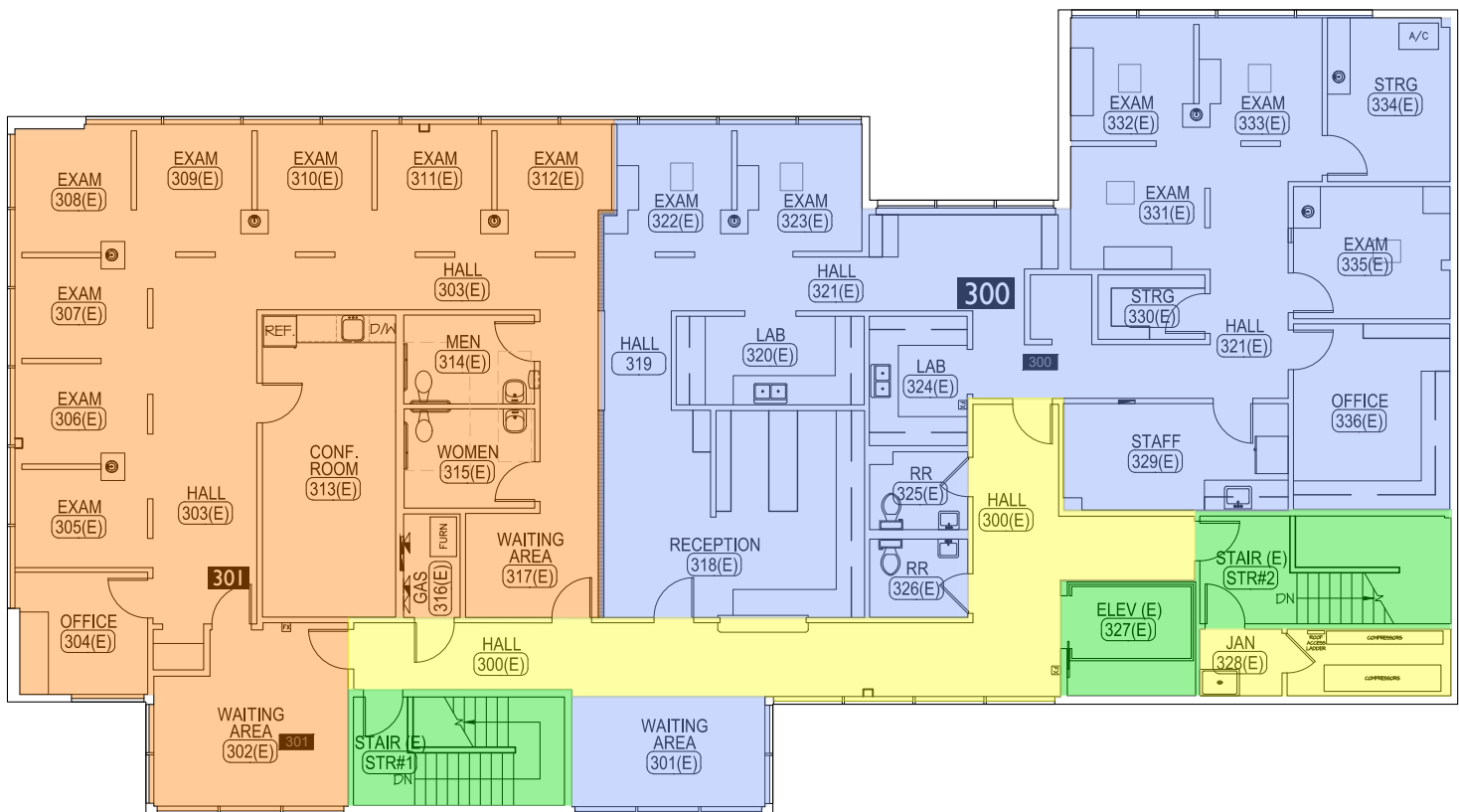
# Office/Dental/Medical Office

OFFICE FOR LEASE

4310 Colby Avenue  
Everett WA 98203

## FLOOR PLAN : Third Floor

Suite 300-  
2,760 RSF  
(Do Not Disturb Tenant)



Christian Decker (206) 283-5212  
www.wccommercialrealty.com

DISCLAIMER: The above information has been secured from sources believed to be reliable, however, no representations are made to its accuracy. Prospective tenants or buyers should consult their professional advisors and conduct their own independent investigation. Site plan and configuration are subject to change. Properties are subject to change in price and/or availability without notice. West Coast Commercial Realty, LLC

# WCCR

West Coast Commercial Realty

Retail  
Office  
Investment