



Rollingwood Center I

37,883 SF FULL TOP FLOOR SUBLEASE AVAILABLE NOW

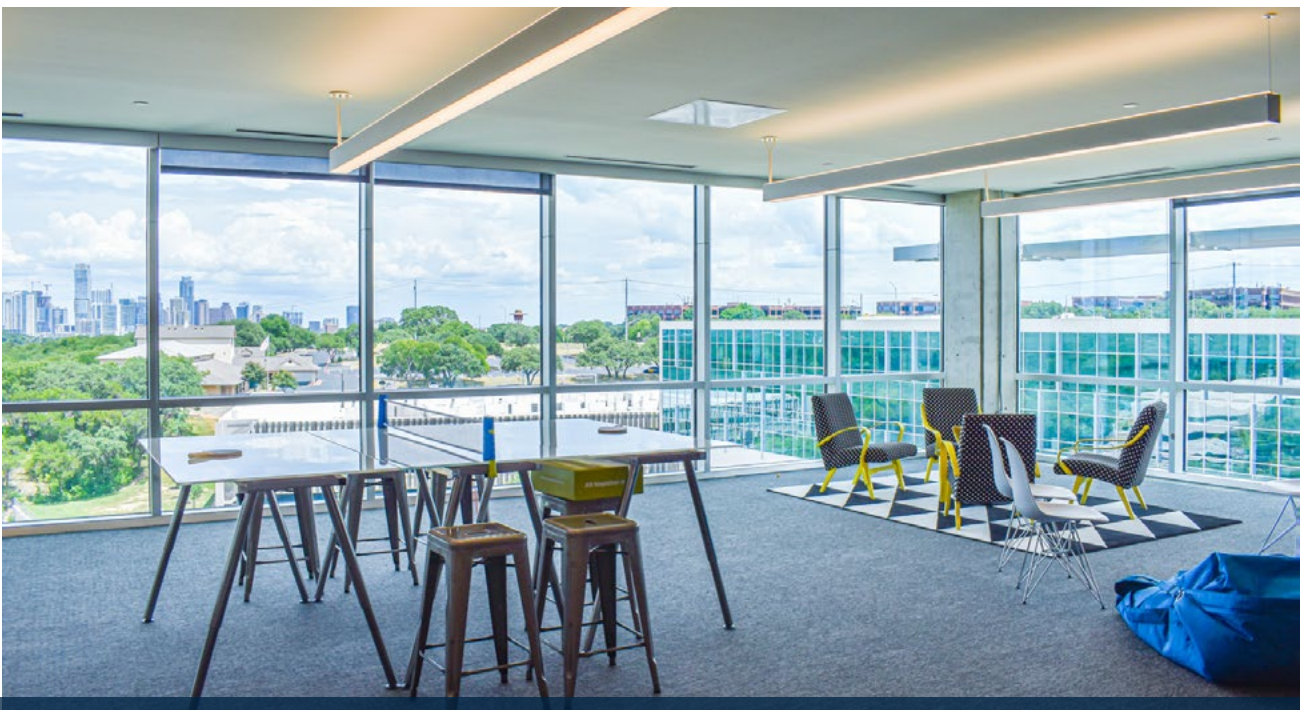
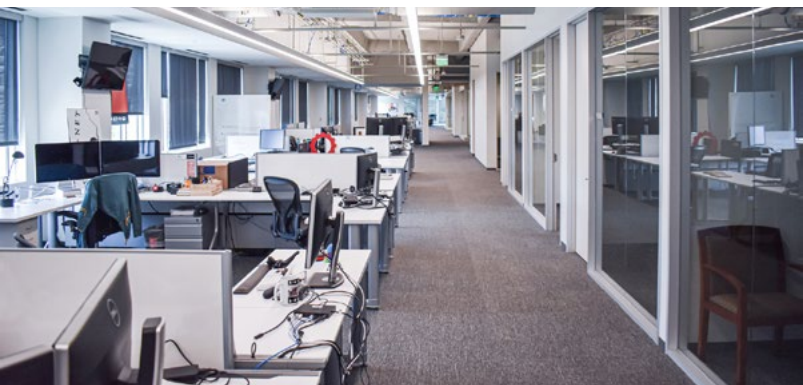
2500 Bee Caves Rd

PROPERTY OVERVIEW:

SUITE 400

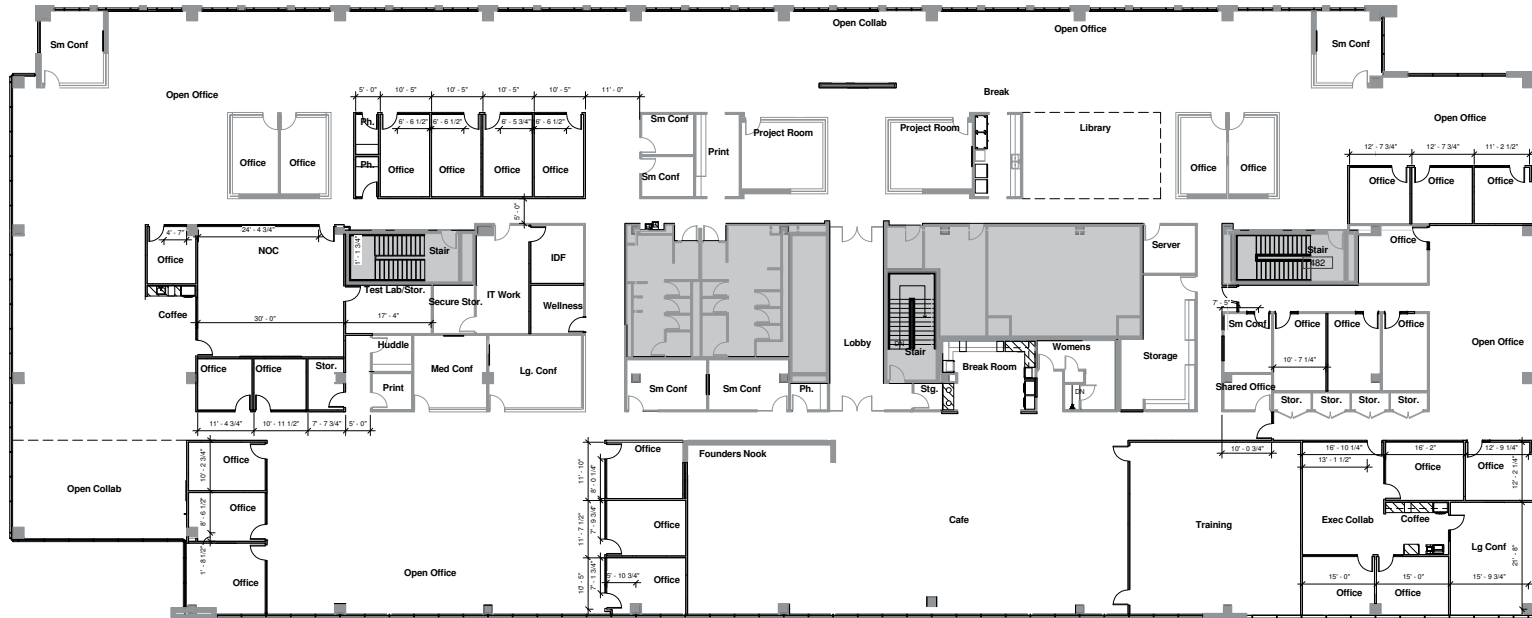
Space	37,883 SF
Availability	Immediate
Flexible Sublease Term	1½ - 6½ Years
Rental Rate	Contact Broker
Operating Expenses	\$18.34/SF
Parking	4/1,000 SF

Top Floor Sublease



Rollingwood Center I

FLOORPLAN – SUITE 400



[VIRTUAL TOUR](#)

[VIDEO TOUR](#)

SPACE FEATURES:

- Creative full floor sublease opportunity
- Incredible panoramic views of the Austin Skyline to the East and the Texas Hill Country to the West
- Mostly open floorplan with numerous individual offices, conference rooms, meeting rooms, and a large training room
- Ample natural light in the space
- Furniture negotiable
- Conveniently located just minutes from Downtown Austin
- Nearby access to Bee Cave Rd and Barton Creek Square Mall amenities
- Close proximity to Zilker Park and the Barton Creek Greenbelt
- Private restrooms in suite
- Large cafe and kitchen area with amazing views!



2500 BEE CAVE RD

