

OFFICE SPACE FOR LEASE



PROPERTY DESCRIPTION

Move-in ready, efficient office suites. The offering is for a full-service lease (janitorial not included) with the tenant only responsible for their telephone and data. An elevator and two sets of stairs services the 2nd-floor spaces.

SPACES	LEASE RATE	SPACE SIZE
Suite 100A	\$19.95 SF/yr	2,138 - 3,672 SF
Suite 111A	\$19.95 SF/yr	1,529 - 3,672 SF
Suite 216A	\$21.00 SF/yr	570 SF
Suite 141B	\$21.00 SF/yr	1,266 - 3,520 SF
Suite 143B	\$21.00 SF/yr	2,254 - 3,520 SF
Suite 241B	\$19.00 SF/yr	2,150 SF
Suite 214B-7	Call for suite & single office rates	126 - 252 SF
Suite 214B-8	Call for suite & single office rates	126 - 252 SF

LOCATION DESCRIPTION

Very conveniently located near the intersection of Derenne Avenue and Paulsen Street. This property provides an easy commute from all areas of Savannah and the outlying areas. I-516, I-16, Truman Expressway and the Veterans Expressway are all within minutes of this office complex.

PROPERTY HIGHLIGHTS

- Move-in ready spaces available
- On site, private workout facility with shower for tenant use
- Private, central courtyard with benches and umbrellas
- Many restaurants, shopping and banks within a few minutes walk
- Elevator for 2nd floor suites

RYAN T. SCHNEIDER, CCIM

912.239.6298

ryan@piercommercial.com



OFFICE BUILDING FOR LEASE



PROPERTY DESCRIPTION

Move-in ready, efficient office suites. On-site, workout room with a shower for Tenant use. The rate is for a full-service lease (janitorial not included) telephone and data being the only additional tenant cost. An elevator and two sets of stairs services the 2nd-floor spaces.

LOCATION DESCRIPTION

Very conveniently located near the intersection of Derenne Avenue and Paulsen Street. This property provides an easy commute from all areas of Savannah and the outlying areas. I-516, I-16, Truman Expressway and the Veterans Expressway are all within minutes of this office complex.

SITE DESCRIPTION

Beautifully landscaped property with a central, landscaped and shaded courtyard area. This office complex has generous, free onsite parking and additional overflow parking, if needed, in addition to free on-street parking.

EXTERIOR DESCRIPTION

Four-building complex with parking on four sides with a central, landscaped courtyard. Brick with stucco and aluminum storefront glazing and windows.

INTERIOR DESCRIPTION

ground floor spaces are accessed directly and share no common area with other Tenants. Second floor suites share a common hallway and mens and ladies restrooms.

PARKING DESCRIPTION

Excellent parking for the medical arts area. Additional parking, if needed, can be accommodated in a parking lot adjacent to the buildings.

RYAN T. SCHNEIDER, CCIM
912.239.6298
ryan@piercommercial.com



EXECUTIVE COURT COMPLEX
5105 PAULSEN ST, SAVANNAH, GA 31405

OFFICE BUILDING FOR LEASE

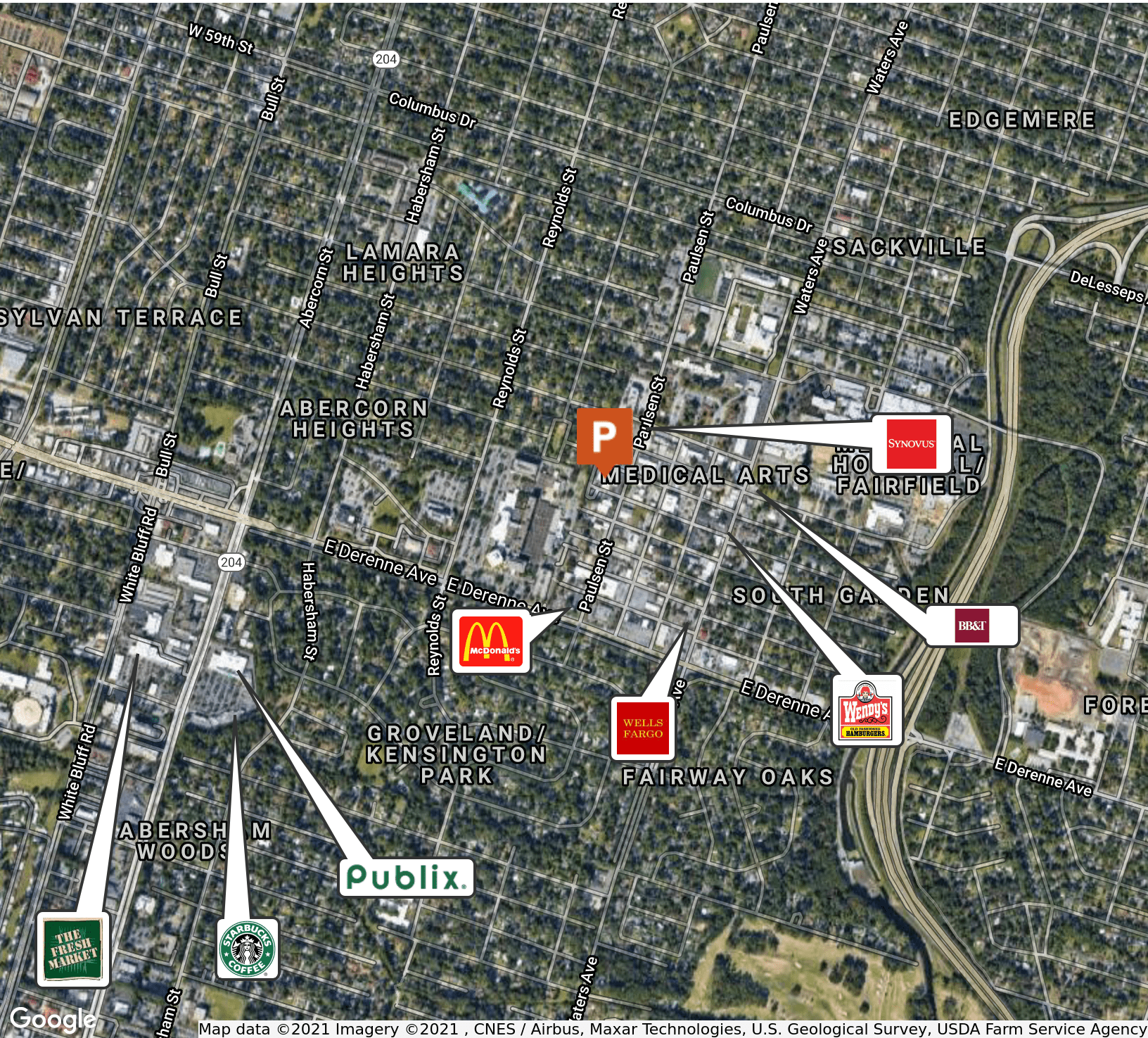


RYAN T. SCHNEIDER, CCIM
912.239.6298
ryan@piercommercial.com



EXECUTIVE COURT COMPLEX
5105 PAULSEN ST, SAVANNAH, GA 31405

OFFICE BUILDING FOR LEASE



RYAN T. SCHNEIDER, CCIM
912.239.6298
ryan@piercommercial.com

