

141

E. 16th St

COSTA MESA, CA 92627

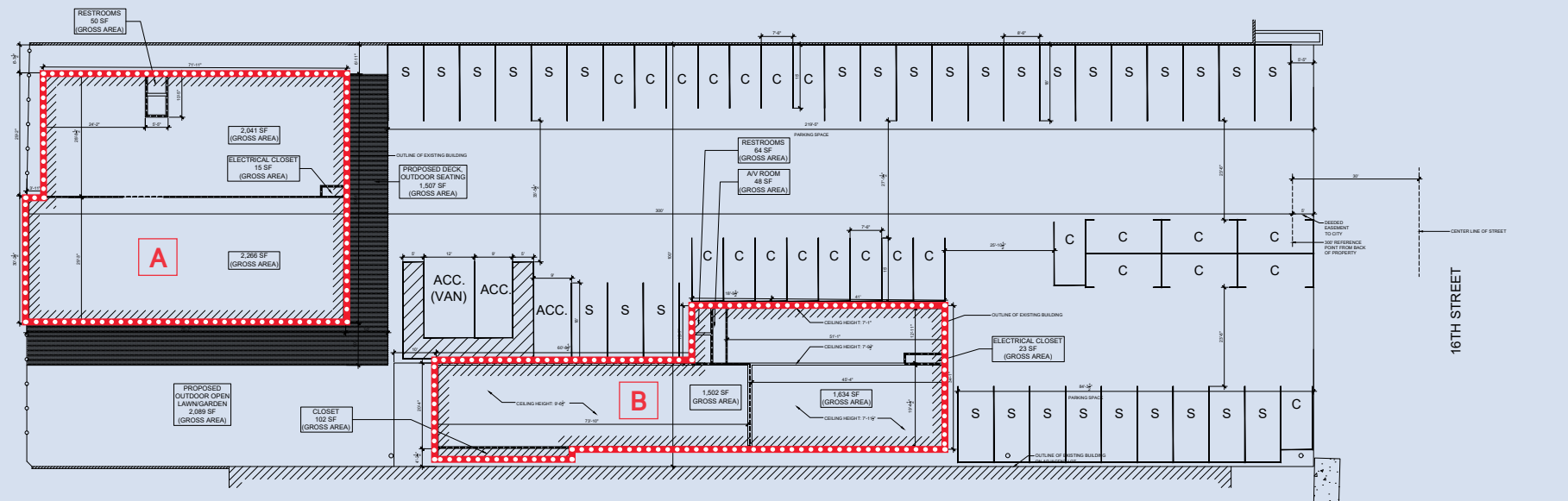
Historic Boatyard Property
For Sale or Lease

30,000 SF OF LAND
WITH ±8,000 SF OF BUILDING

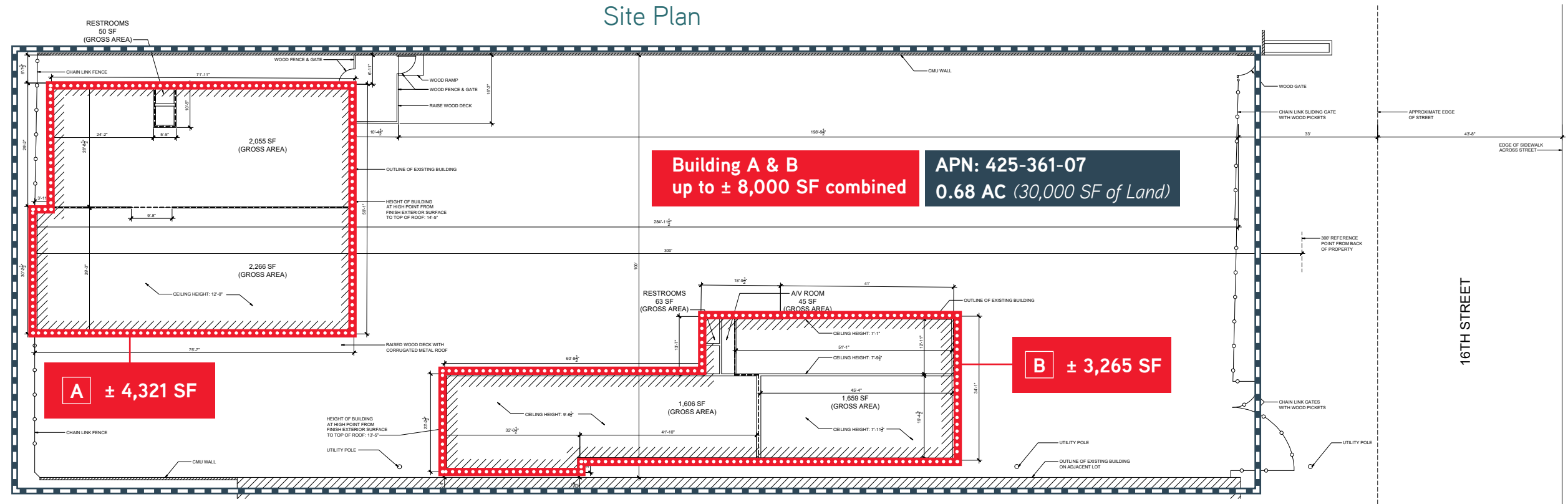


Conceptual Parking Plan

# OF STALL	TYPE
23	(C) Compact Parking Spaces
31	(S) Standard Parking Spaces
3	(ACC) Accessible Parking Spaces



Site Plan

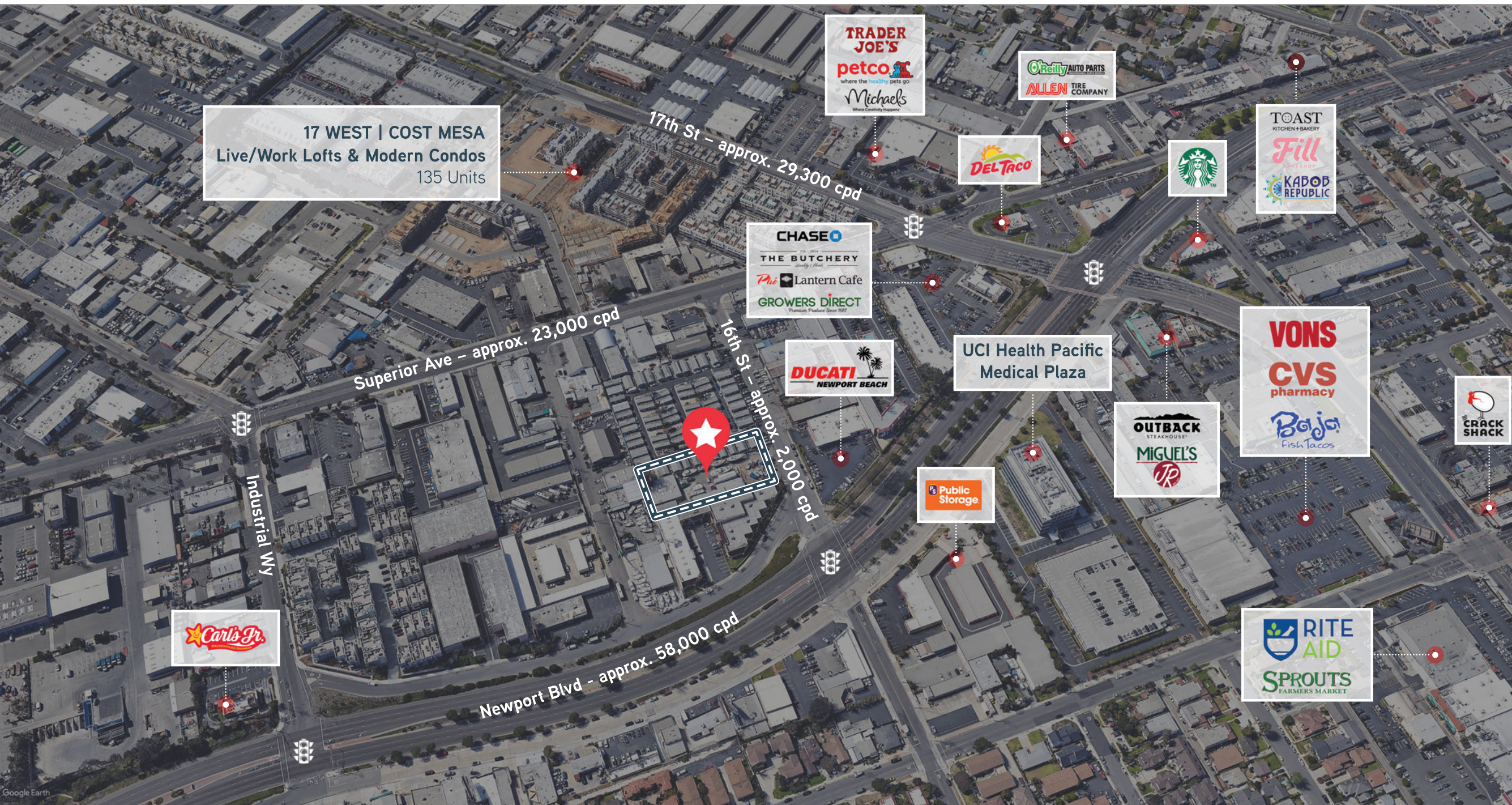


“100 year-old boatyard, the oldest in Costa Mesa mentioned in the Newport Beach Historical Society chapter on the original Boatyards.”

GIL'S CATAMARAN ~ CUSTOM BUILT CATAMARANS



This information contained herein was obtained from sources deemed to be reliable; however SRS Real Estate Partners makes no guarantees, warranties or representations as to the completeness or accuracy thereof.



17 WEST | COST MESA
Live/Work Lofts & Modern Condos
135 Units

17th St – approx. 29,300 cpd

Superior Ave – approx. 23,000 cpd

16th St – approx. 2,000 cpd

Newport Blvd – approx. 58,000 cpd

APN:
425-361-07
0.68 AC
(30,000 SF of Land)

A & B
Combined
± 8,000 SF
of Building



16th St – approx. 2,000 cpd

Newport Blvd – approx. 58,000 cpd



Overview

Historic Boatyard Property For Sale or Lease

30,000 SF OF LAND WITH ±8,000 SF OF BUILDING

- Charming existing buildings with plenty of parking
- Buildings may qualify for historic designation and preservation grants
- Convenient access via close proximity to signal at Newport Blvd & 16th Street
- Located in an opportunity zone
- Ideal for cannabis, maritime industry, yacht broker, boat building, showroom, etc.

Demographics

92726 (Costa Mesa)

1 mile

Population 31,735

Median Age 34.9

Average Household Income \$109,165

Daytime Population 27,861

63,495
POPULATION

2.8
AVG SIZE
HOUSEHOLD

3 miles

Population 143,263

Median Age 38.4

Average Household Income \$134,375

Daytime Population 68,210

\$73,129
MEDIAN
HOUSEHOLD
INCOME

5 miles

Population 297,470

Median Age 38.8

Average Household Income \$139,957

Daytime Population 251,807

21,820
HOUSEHOLDS

35.2
MEDIAN
AGE





141
E. 16th St
COSTA MESA, CA 92627

For More Information
Contact:

Terrison Quinn
terrison.quinn@srsre.com
949 698 1107
Ca Lic No. 01789657

Tony Vuona
tony.vuona@srsre.com
949 270 8211
Ca Lic No. 02046746

