

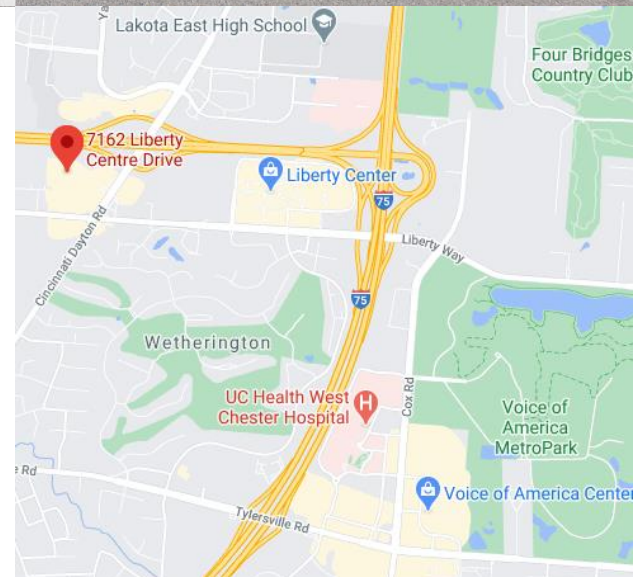
Liberty Professional Centre

7162 Liberty Centre Drive | 6,221 Square Feet
Liberty Township, Ohio 45069 | Available for Lease



Building Highlights

Immediate access to Liberty Center's retail
Fantastic designer finishes with private offices
Multiple private entrances into the space
Geothermal heating and cooling system
Abundant at-your-door surface parking
Fresh paint and new carpet throughout
Updated with new touchless fixtures
One traffic light from I-75 via SR-129
Building signage opportunity
No local earnings tax
Asking \$15.50/SF MG + Utilities for Lease



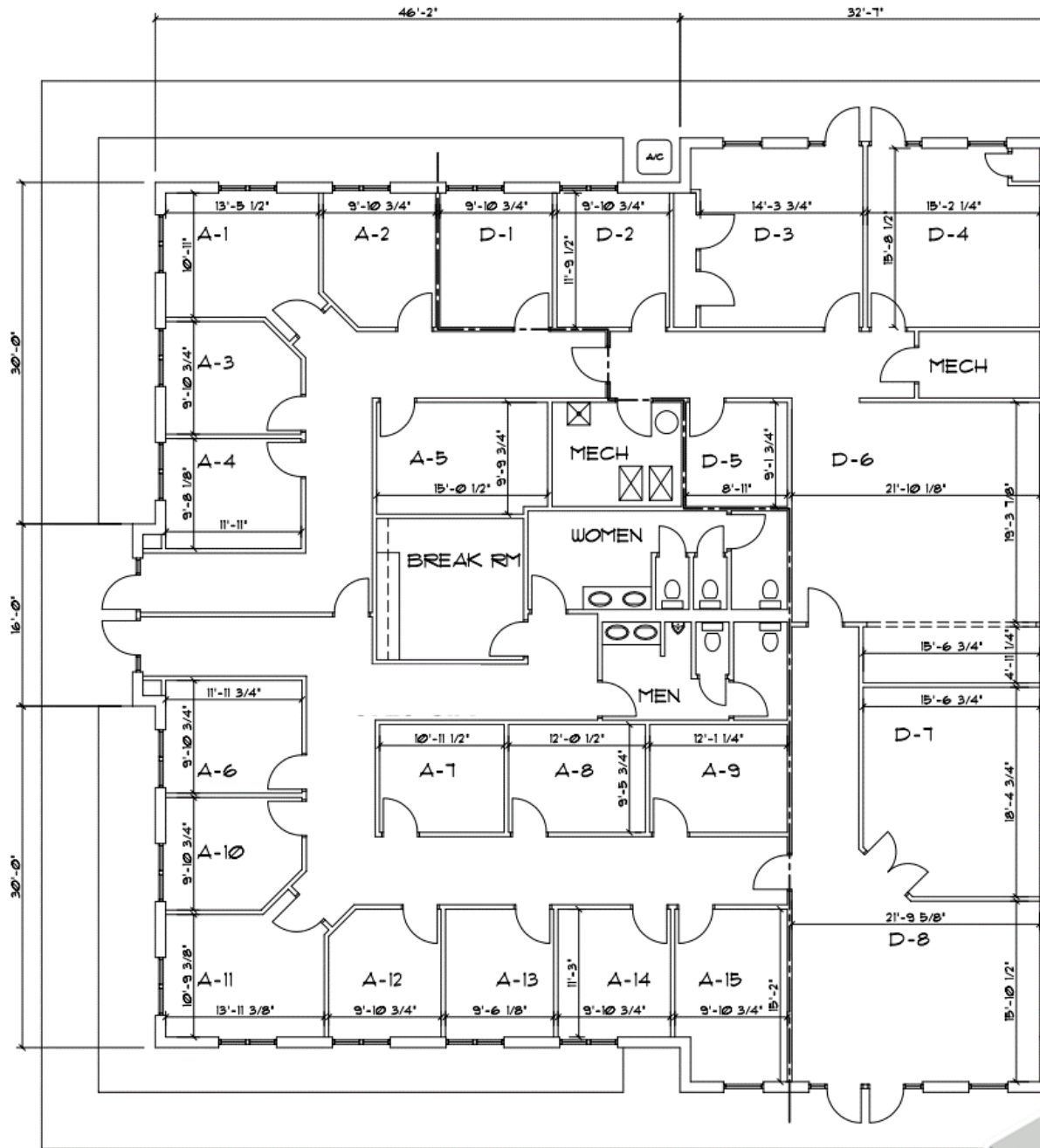
Ed Mathis
Vice President
Direct: (513) 549-0440
ed.mathis@republic-cre.com



REPUBLIC
COMMERCIAL REAL ESTATE

Nick Barela
President, Principal
Direct: (513) 549-5440
nick.barela@republic-cre.com

Floor Plan & Infographic



1st Floor - 6,621 SF



Ed Mathis
Vice President

Direct: (513) 549-0440

ed.mathis@republic-cre.com



REPUBLIC
COMMERCIAL REAL ESTATE

Nick Barela
President, Principal

Direct: (513) 549-5440

nick.barela@republic-cre.com

Photographs & Infographic



CITY, STATE
Liberty Township, OH

POPULATION
62,214

AVG. HH SIZE
3.00

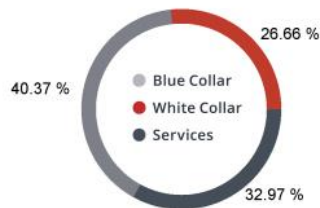
MEDIAN HH INCOME
\$103,821

HOME OWNERSHIP

Renters: **2,258**

Owners: **18,114**

EMPLOYMENT



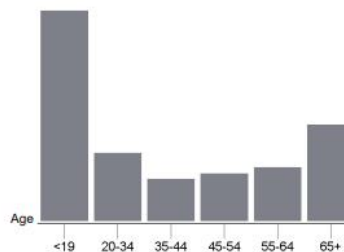
50.38 % Employed
0.88 % Unemployed

EDUCATION

High School Grad: **20.59 %**
Some College: **20.70 %**
Associates: **6.79 %**
Bachelors: **56.11 %**

GENDER & AGE

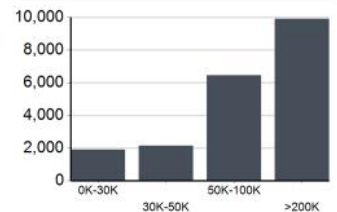
49.37 % Male **50.63 %** Female



RACE & ETHNICITY

White: **83.13 %**
Asian: **3.84 %**
Native American: **0.00 %**
Pacific Islanders: **0.00 %**
African-American: **6.88 %**
Hispanic: **2.90 %**
Two or More Races: **3.25 %**

INCOME BY HOUSEHOLD



HH SPENDING



Ed Mathis
Vice President
Direct: (513) 549-0440
ed.mathis@republic-cre.com



Nick Barela
President, Principal
Direct: (513) 549-5440
nick.barela@republic-cre.com