

▶ 25-55 RUTTER STREET

25-55 RUTTER STREET, ROCHESTER, NY 14606

Buckingham Properties is currently offering a 6,225 square foot industrial space with grade access located at the corner of Lyell Avenue and Rutter Street near Mt. Read Boulevard – ideal for a machine shop or fabricator. The building is fully air conditioned, with 3-phase, 480 volt, 800 amp power with a clear ceiling height of 16 feet. The property includes surface parking.

A floor plan follows.



6,225 SF
AVAILABLE



EASY
EXPRESSWAY
ACCESS



WEST
SIDE



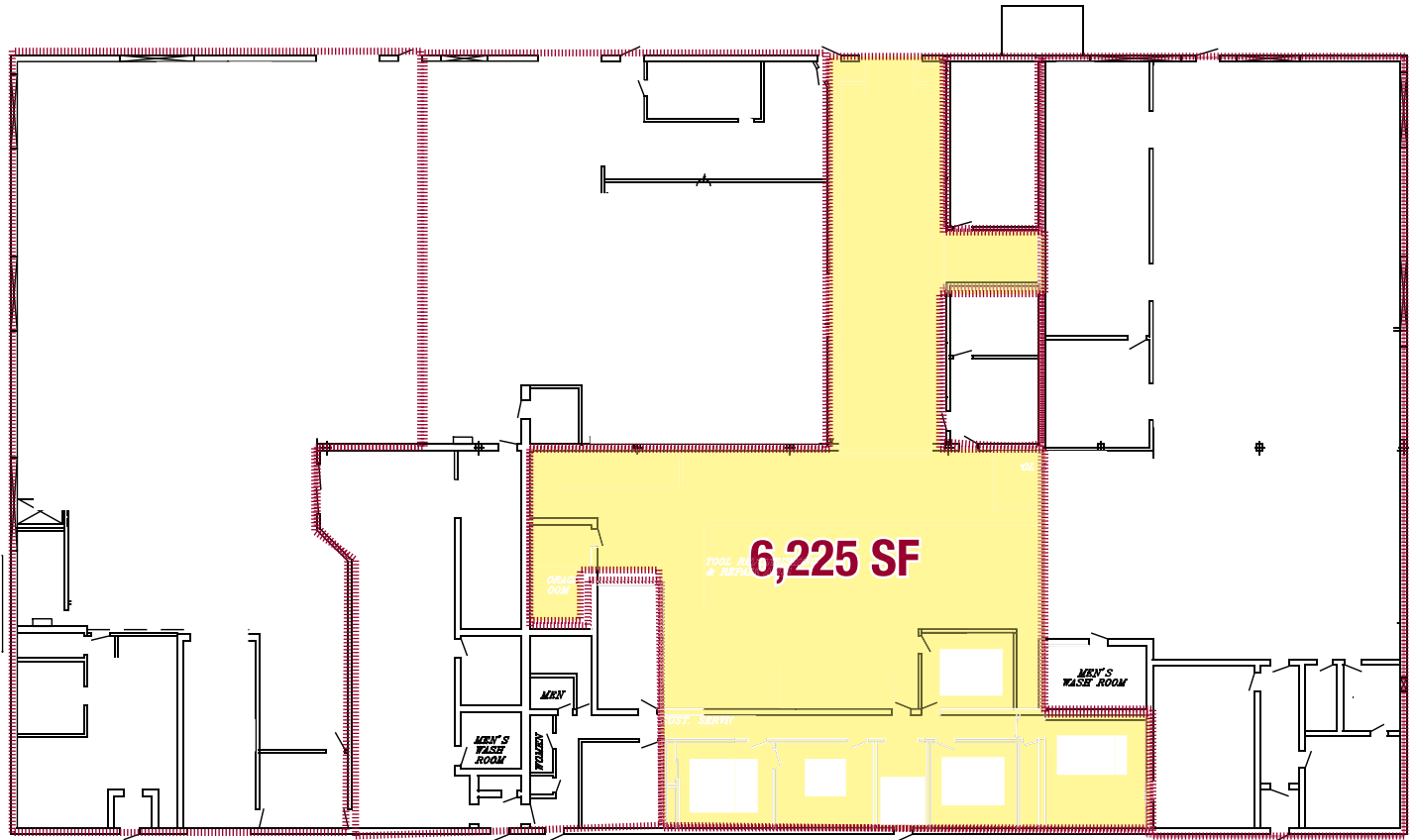
CONTACT ADAM BORRELL
(585) 287-5861
aborrell@buckprop.com



BUCKINGHAM
PROPERTIES

▶ 25-55 RUTTER STREET

25-55 RUTTER STREET, ROCHESTER, NY 14606



CONTACT ADAM BORRELL

(585) 287-5861

aborrell@buckprop.com



**BUCKINGHAM
PROPERTIES**

Real Estate...*Reimagined.*

T: (585) 295-9500

www.buckprop.com