

# ▶ LEGACY TOWER

ONE BAUSCH & LOMB PLACE, ROCHESTER, NY 14604

Legacy Tower is one of the hallmarks of Rochester's distinctive skyline. The 460,517 gross square foot Class A office tower is known for its dramatic design and granite facade. Extensive amenities include a full-service restaurant on the second floor, the 11,000 square foot glass-enclosed Wintergarden, 4,500 square foot fitness center, and multiple meeting/training rooms.

Constructed in 1995, Legacy Tower is the second tallest building in Rochester, standing at 401 feet with 20 floors. The two-story lobby features granite, limestone and polished marble floors. Quality continues throughout the building with wood finishes and ceiling heights of up to ten feet. Tenants include Woods Oviatt Gilman, Harter Secrest & Emery LLP, Keybank, and Deloitte & Touche, among others.

Buckingham Properties is currently offering office suites. Floor plans follow.

- 8,200 SF on the 4<sup>th</sup> Floor
- 4,894 SF on the 7<sup>th</sup> Floor
- 1,678 SF on the 9<sup>th</sup> floor



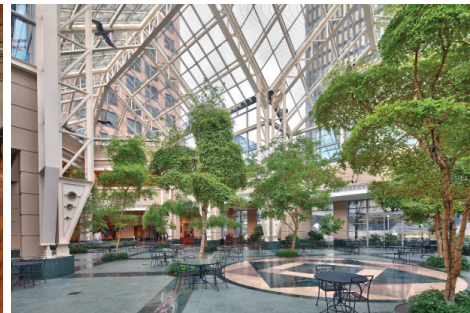
**UP TO 8,200**  
CONTIGUOUS SF  
AVAILABLE



FULL-SERVICE  
RESTAURANT  
ON SITE



CAFE & COFFEE  
BAR ON SITE



**CONTACT ADAM BORRELL**

(585) 287-5861

[aborrell@buckprop.com](mailto:aborrell@buckprop.com)



**BUCKINGHAM**  
PROPERTIES

Real Estate...*Reimagined.*

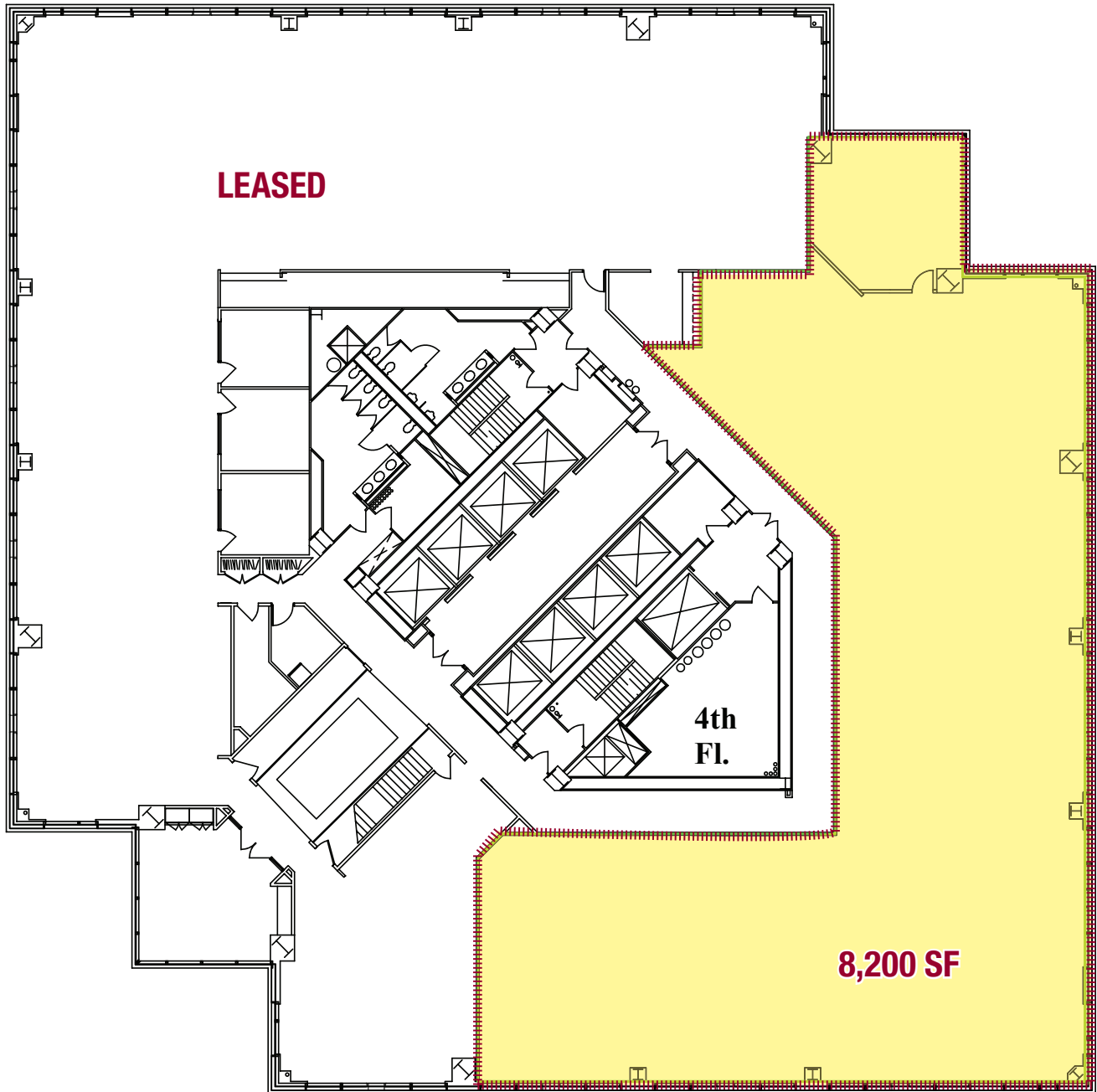
T: (585) 295-9500

[www.buckprop.com](http://www.buckprop.com)

# ▶ LEGACY TOWER

ONE BAUSCH & LOMB PLACE, ROCHESTER, NY 14604

4<sup>TH</sup> FLOOR



**CONTACT ADAM BORRELL**

(585) 287-5861

[aborrell@buckprop.com](mailto:aborrell@buckprop.com)

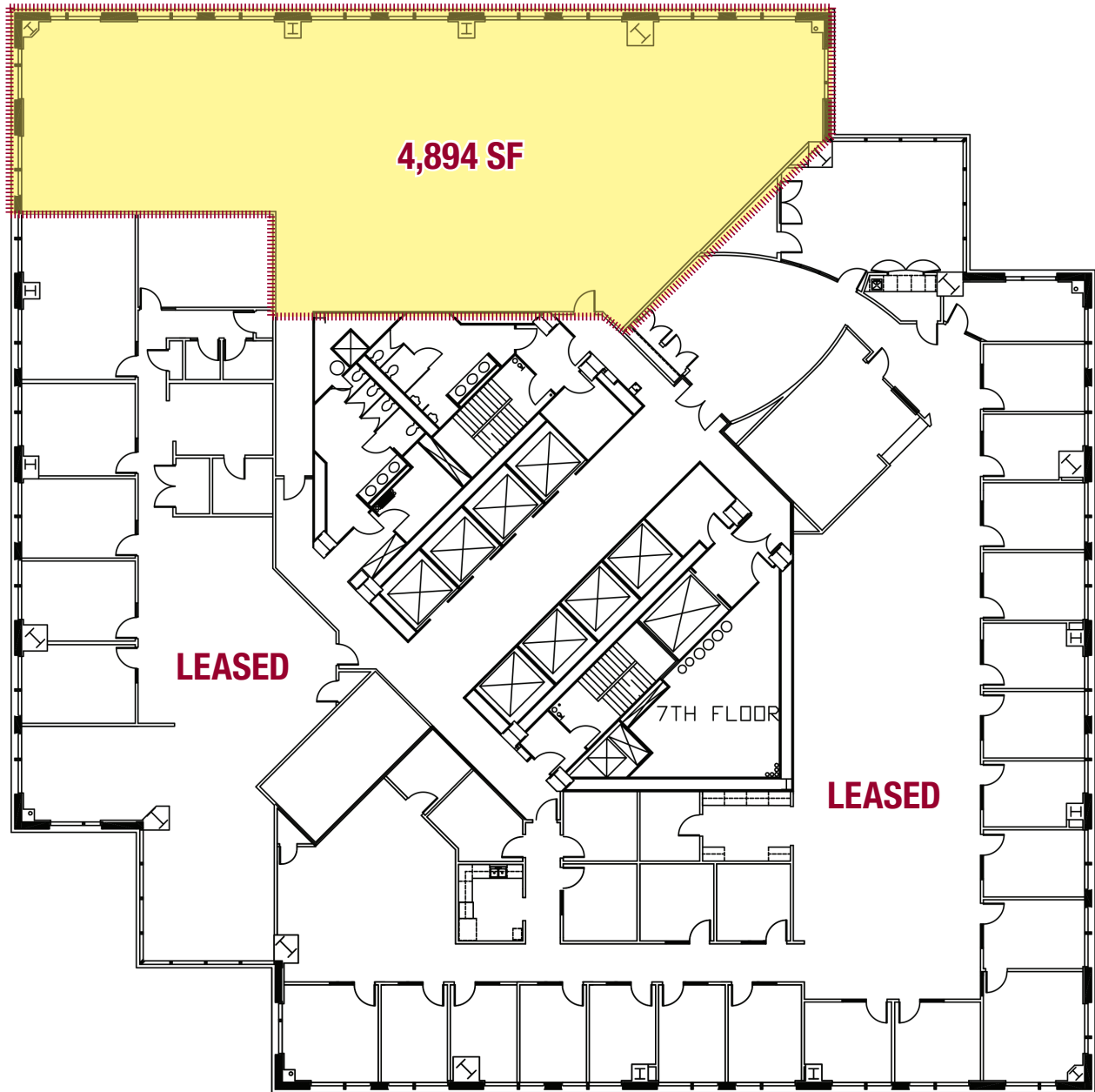


**BUCKINGHAM  
PROPERTIES**

# ▶ LEGACY TOWER

ONE BAUSCH & LOMB PLACE, ROCHESTER, NY 14604

7<sup>TH</sup> FLOOR



**CONTACT ADAM BORRELL**

(585) 287-5861

[aborrell@buckprop.com](mailto:aborrell@buckprop.com)

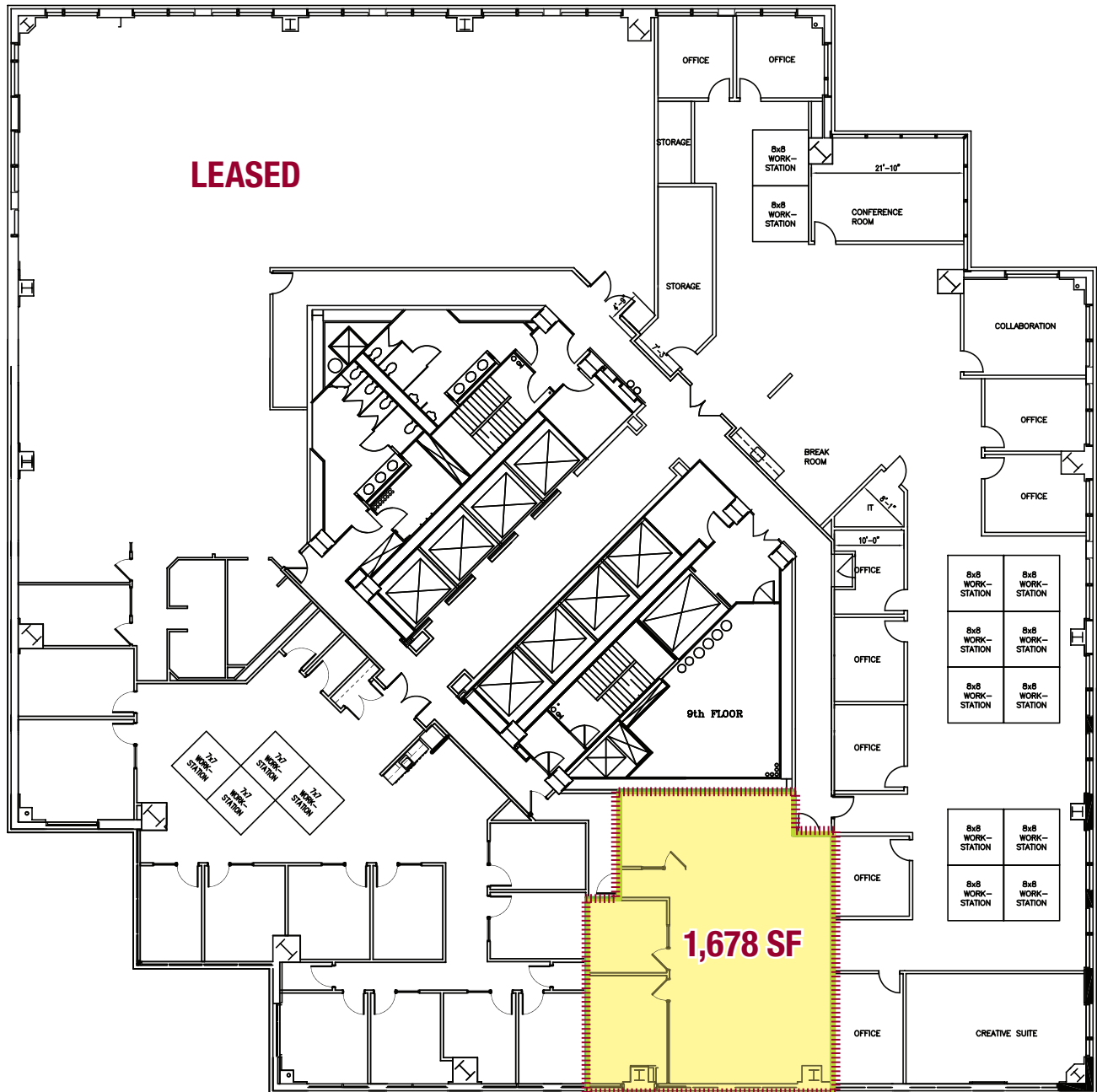


**BUCKINGHAM  
PROPERTIES**

# ▶ LEGACY TOWER

ONE BAUSCH & LOMB PLACE, ROCHESTER, NY 14604

9<sup>TH</sup> FLOOR



**CONTACT ADAM BORRELL**

(585) 287-5861

aborrell@buckprop.com

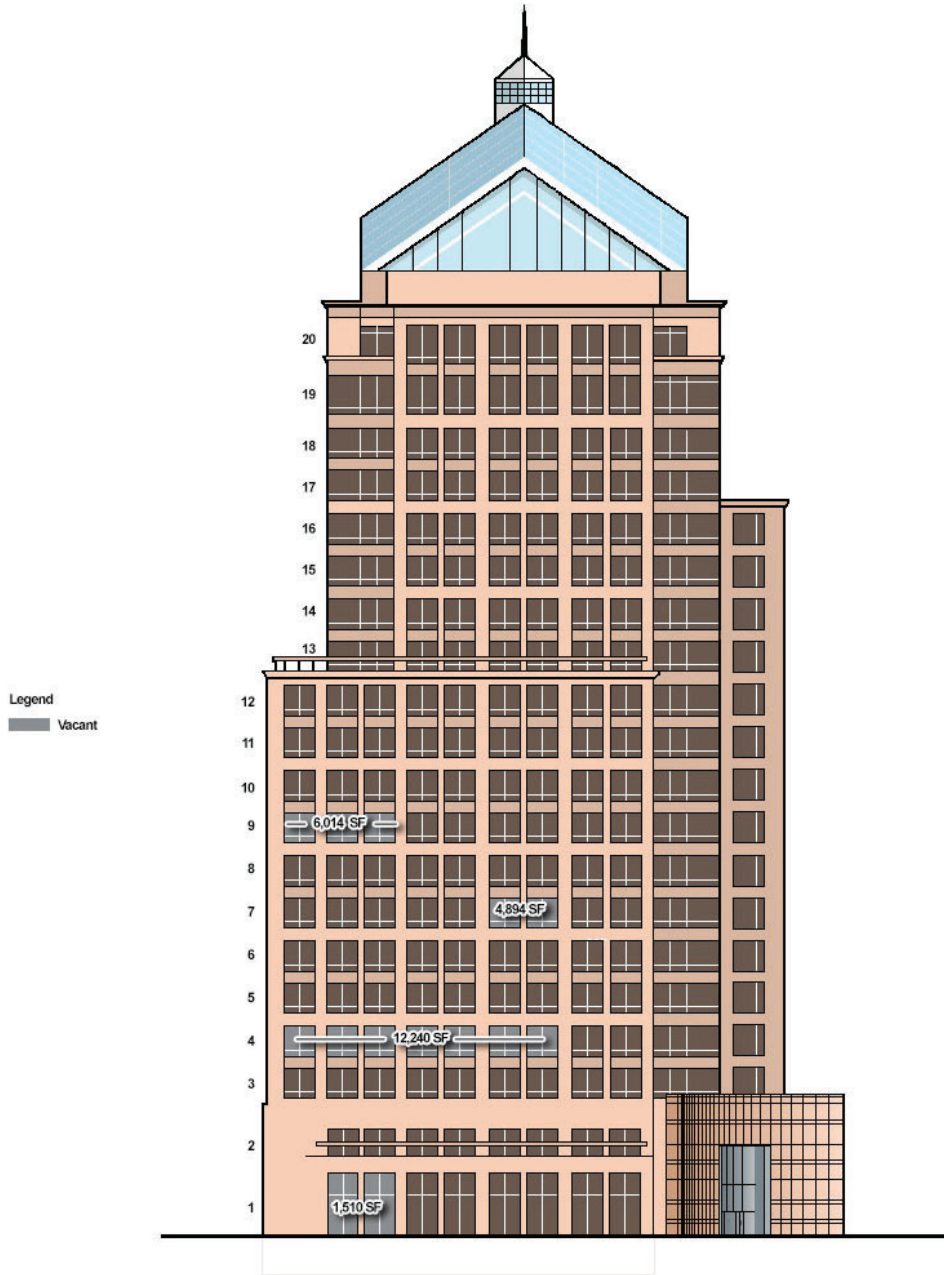


**BUCKINGHAM  
PROPERTIES**

# ▶ LEGACY TOWER

ONE BAUSCH & LOMB PLACE, ROCHESTER, NY 14604

STACKING PLAN



**CONTACT ADAM BORRELL**

(585) 287-5861

[aborrell@buckprop.com](mailto:aborrell@buckprop.com)



**BUCKINGHAM  
PROPERTIES**