

**FOR LEASE  
IN FINANCIAL DISTRICT**

**98 BATTERY STREET**

Great building located steps from Bart and Muni.  
Excellent parking nearby with a variety of garages.  
Walking distance to Union square, SOMA,  
and Ferry Building.



# FOR LEASE

# 98 BATTERY ST. — SUITE 250

**Square Footage:** 2,774 SF  
**Rate:** Negotiable  
**Lease Type:** Industrial Gross  
**Term:** 3-5 Years

- 3 Medium Private Offices
- 1 Conference Room
- 1 Small Private/Phone Room
- Open Plan for 13 Desks
- Kitchen/Break Room
- Available: **Now**



**HANS HANSSON**  
C: 415-517-2589  
E: [hans@starboardnet.com](mailto:hans@starboardnet.com)  
CA BRE# 00872902

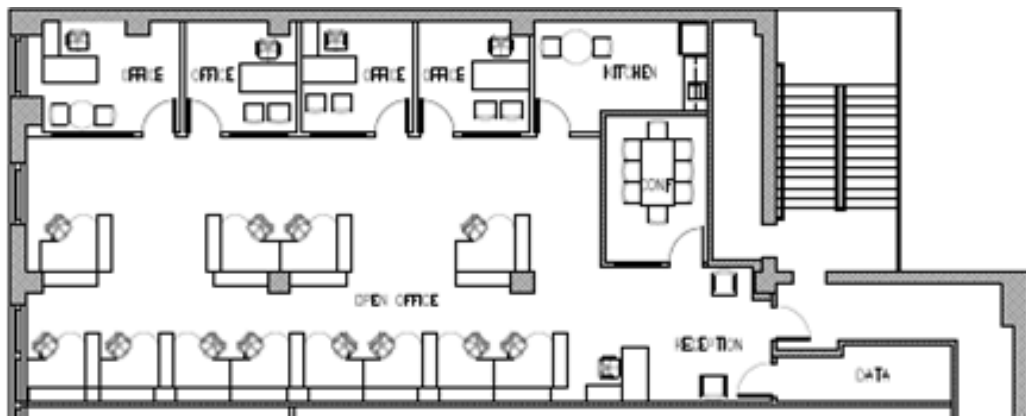
**FRANK VELLA**  
C: 650-464-8062  
E: [frank@starboardnet.com](mailto:frank@starboardnet.com)  
CA BRE# 01104977



**FOR LEASE**

**98 BATTERY ST. – SUITE 250**

**FLOOR PLAN – SUITE 250**



**HANS HANSSON**  
C: 415-517-2589  
E: [hans@starboardnet.com](mailto:hans@starboardnet.com)  
CA BRE# 00872902

**FRANK VELLA**  
C: 650-464-8062  
E: [frank@starboardnet.com](mailto:frank@starboardnet.com)  
CA BRE# 01104977



# FOR LEASE

# 98 BATTERY ST. — SUITE 504

**Square Footage:** 2,400 SF  
**Rate:** Negotiable  
**Lease Type:** Industrial Gross  
**Term:** Negotiable

- 3 Private Offices/Conference Rooms
- Open Plan
- Kitchen Area
- Great Natural Light
- Window Line on Pine Street
- Space Available July 31st, 2020



**HANS HANSSON**  
C: 415-517-2589  
E: hans@starboardnet.com  
CA BRE# 00872902

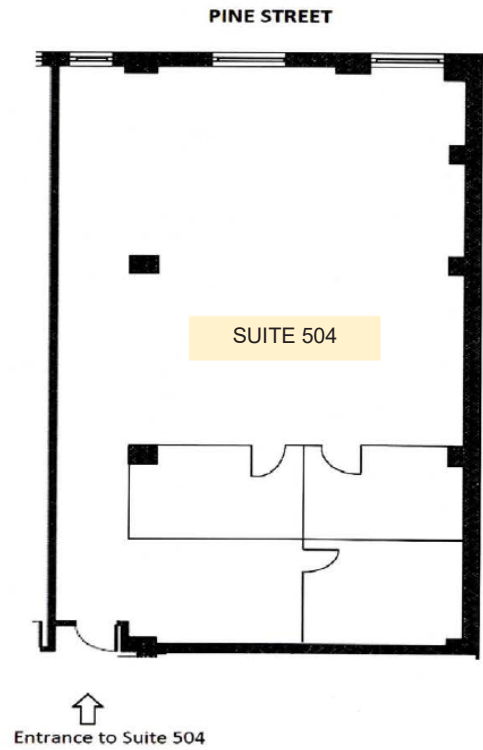
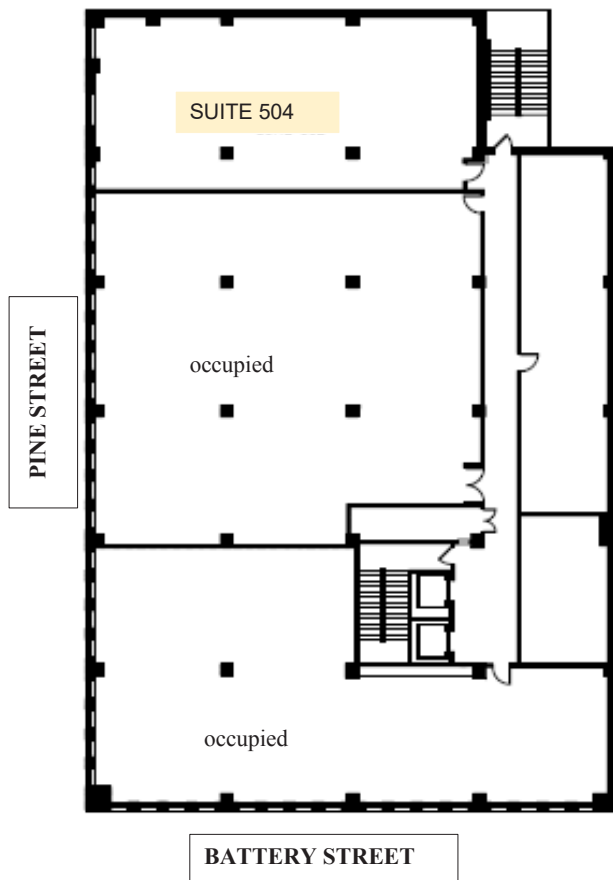
**FRANK VELLA**  
C: 650-464-8062  
E: frank@starboardnet.com  
CA BRE# 01104977



**FOR LEASE**

**98 BATTERY ST. — SUITE 504**

## FLOOR PLAN — SUITE 504



Note: Approximately 2,400 rentable square feet.

**HANS HANSSON**

C: 415-517-2589

E: [hans@starboardnet.com](mailto:hans@starboardnet.com)

CA BRE# 00872902

**FRANK VELLA**

C: 650-464-8062

E: [frank@starboardnet.com](mailto:frank@starboardnet.com)

CA BRE# 01104977



# FOR LEASE

# 98 BATTERY ST. — SUITE 601 PH

**Square Footage:** 1,021 SF  
**Rate:** Negotiable  
**Lease Type:** Industrial Gross  
**Term:** Negotiable

- Lounge Area
- Large Open Plan Area
- Large Private Office/Conference Room
- Great Natural Light
- Sliding Doors
- View of San Francisco Skyline



**HANS HANSSON**  
C: 415-517-2589  
E: [hans@starboardnet.com](mailto:hans@starboardnet.com)  
CA BRE# 00872902

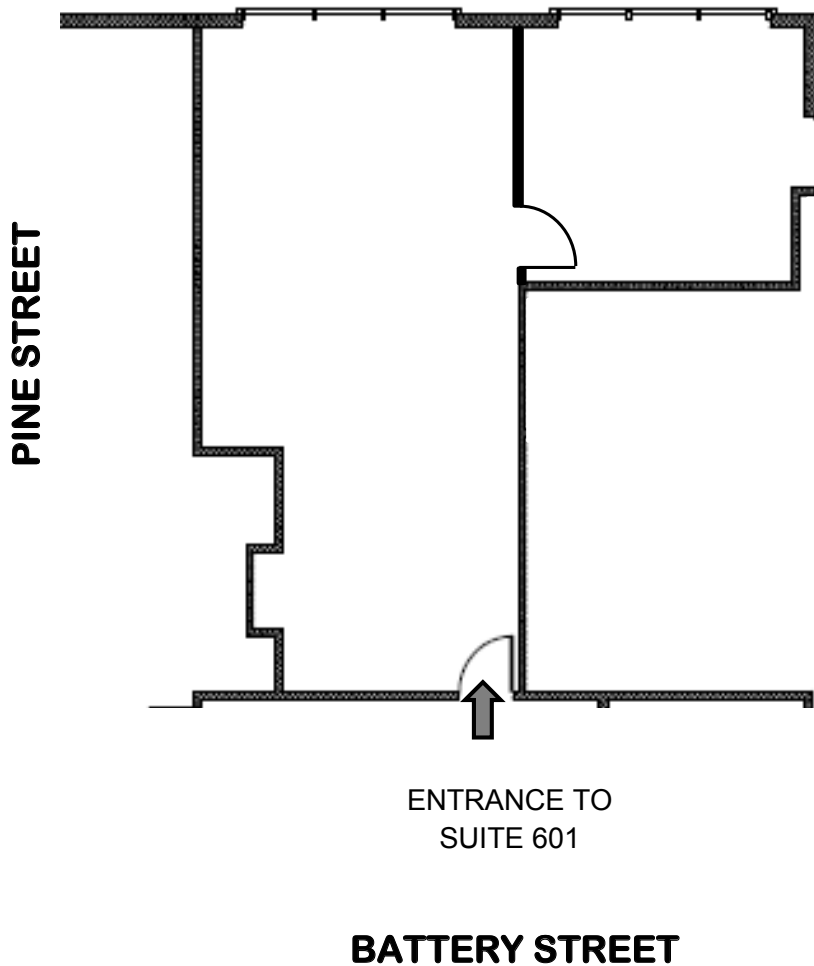
**FRANK VELLA**  
C: 650-464-8062  
E: [frank@starboardnet.com](mailto:frank@starboardnet.com)  
CA BRE# 01104977



**FOR LEASE**

**98 BATTERY ST. – SUITE 601 PH**

**FLOOR PLAN – SUITE 601 PH**



**HANS HANSSON**  
C: 415-517-2589  
E: [hans@starboardnet.com](mailto:hans@starboardnet.com)  
CA BRE# 00872902

**FRANK VELLA**  
C: 650-464-8062  
E: [frank@starboardnet.com](mailto:frank@starboardnet.com)  
CA BRE# 01104977

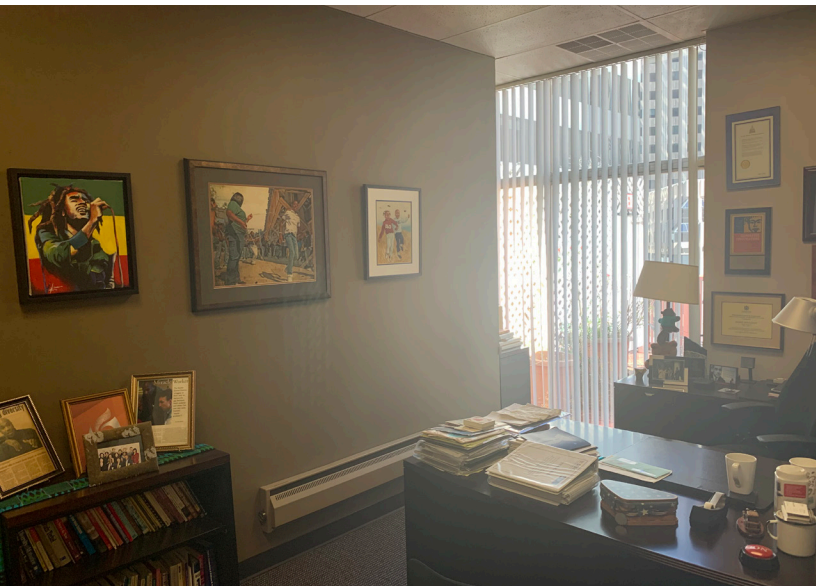


# FOR LEASE

# 98 BATTERY ST. — SUITE 603 PH

**Square Footage:** 644 SF  
**Rate:** Negotiable  
**Lease Type:** Industrial Gross  
**Term:** Negotiable

- Open space floor plan
- Small kitchenette
- 1 Private office
- Great natural light



**HANS HANSSON**  
C: 415-517-2589  
E: [hans@starboardnet.com](mailto:hans@starboardnet.com)  
CA BRE# 00872902

**FRANK VELLA**  
C: 650-464-8062  
E: [frank@starboardnet.com](mailto:frank@starboardnet.com)  
CA BRE# 01104977

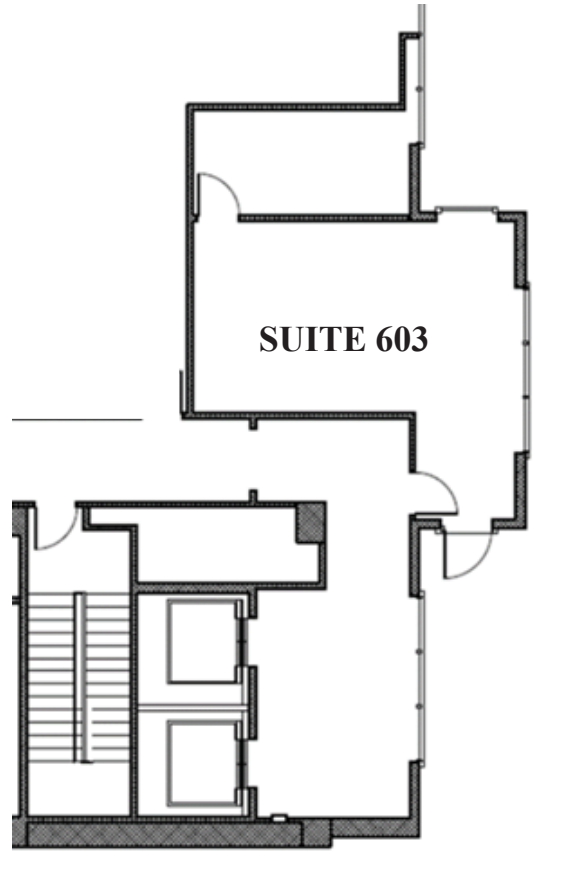




**FOR LEASE**

**98 BATTERY ST. — SUITE 603 PH**

**FLOOR PLAN — SUITE 603 PH**



**HANS HANSSON**  
C: 415-517-2589  
E: [hans@starboardnet.com](mailto:hans@starboardnet.com)  
CA BRE# 00872902

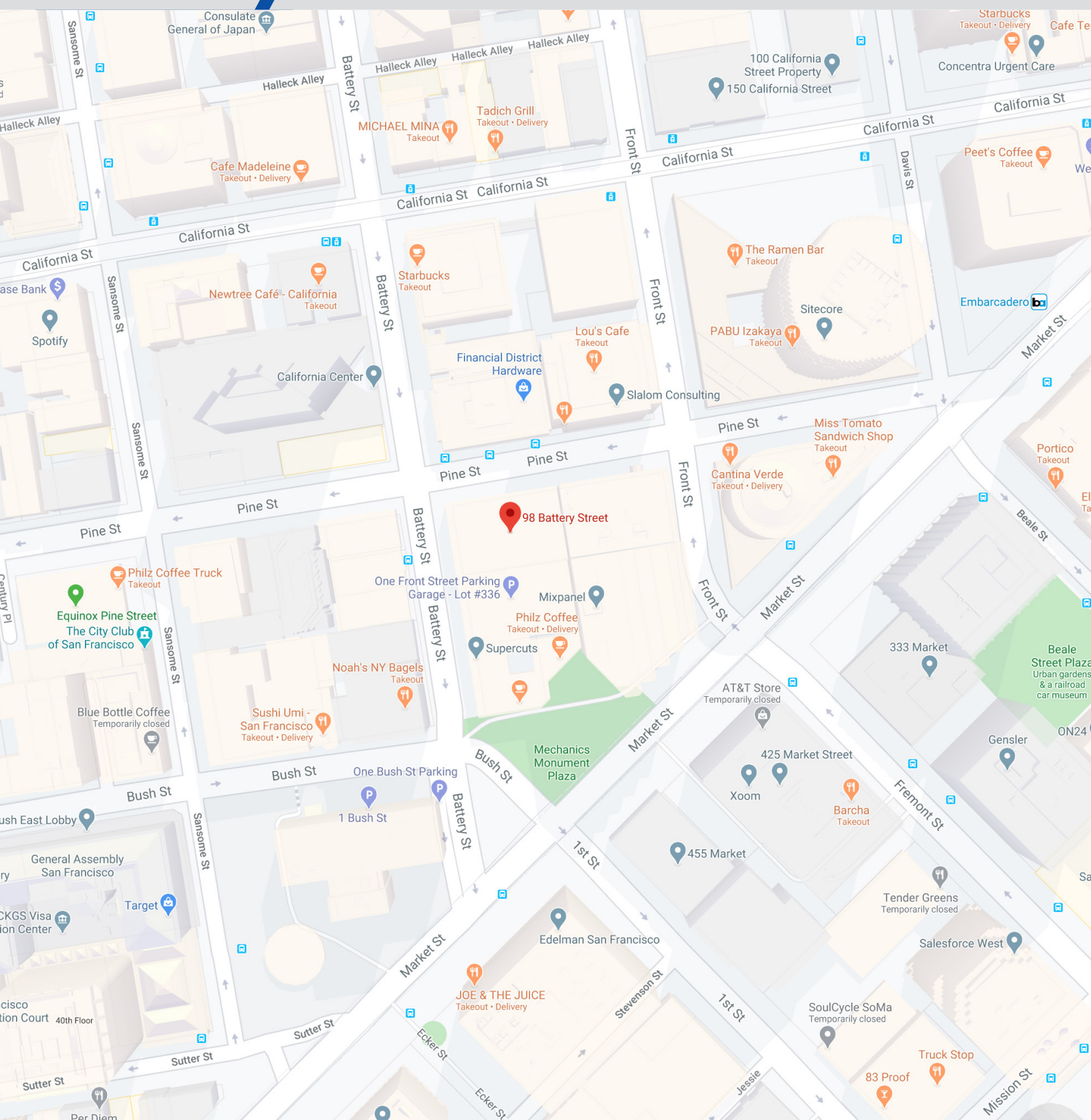
**FRANK VELLA**  
C: 650-464-8062  
E: [frank@starboardnet.com](mailto:frank@starboardnet.com)  
CA BRE# 01104977



**FOR LEASE**

# 98 BATTERY STREET

NICEST SMALL OFFICE SPACE FIDI



**HANS HANSSON**  
C: 415-517-2589  
E: [hans@starboardnet.com](mailto:hans@starboardnet.com)  
CA BRE# 00872902

**FRANK VELLA**  
C: 650-464-8062  
E: [frank@starboardnet.com](mailto:frank@starboardnet.com)  
CA BRE# 01104977

