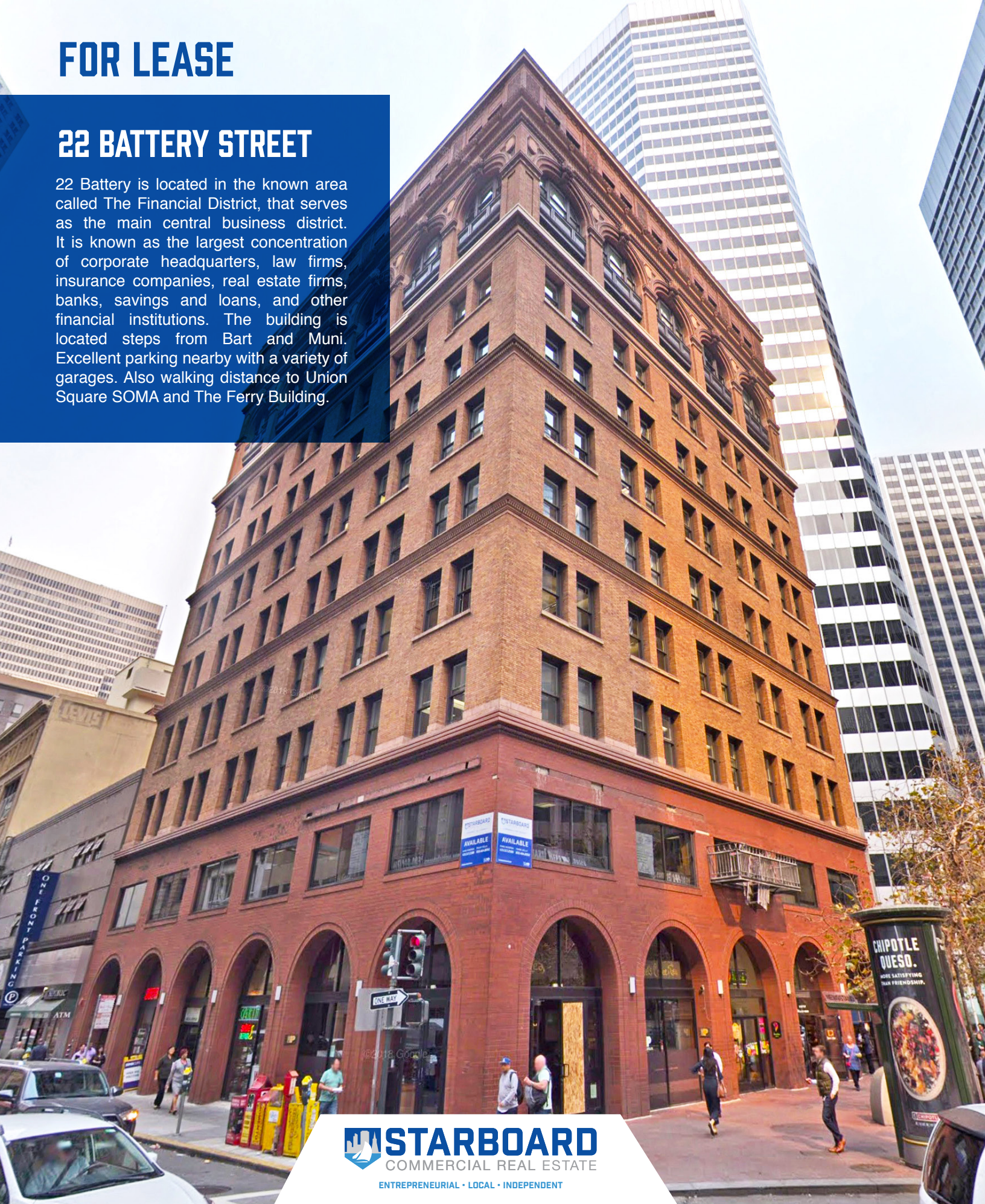


FOR LEASE

22 BATTERY STREET

22 Battery is located in the known area called The Financial District, that serves as the main central business district. It is known as the largest concentration of corporate headquarters, law firms, insurance companies, real estate firms, banks, savings and loans, and other financial institutions. The building is located steps from Bart and Muni. Excellent parking nearby with a variety of garages. Also walking distance to Union Square SOMA and The Ferry Building.



STARBOARD
COMMERCIAL REAL ESTATE
ENTREPRENEURIAL • LOCAL • INDEPENDENT

FOR LEASE



22 BATTERY STREET

22 Battery is located in the known area called The Financial District, that serves as the main central business district. It is known as the largest concentration of corporate headquarters, law firms, insurance companies, real estate firms, banks, savings and loans, and other financial institutions. The building is located steps from Bart and Muni. Excellent parking nearby with a variety of garages. Also walking distance to Union Square SOMA and The Ferry Building.

Negotiable

RATE

Full Service

LEASE TYPE

3 to 5 years

TERM

FOR MORE INFORMATION, CONTACT:

HANS HANSSON

hans@starboardnet.com
415.765.6897 | LIC #00872902

FRANK VELLA

frank@starboardnet.com
650.464.8062 | LIC #01104977

SUITE 220 - 754 SF

- Nice Two-room Office
- Great Location
- Close to Bart & Market Street
- Restaurants and Amenities



VIEW
VIRTUAL
TOUR

SUITE 320 - 3,706 SF

- 2 Private Offices
- 2 Bullpen Area/Open Space
- Reception Area
- 2 Built-in Phone Booths
- 1 Large Conference Room 15-20 Seats
- Great Natural Light with Operable Windows
- Kitchen



VIEW
VIRTUAL
TOUR

SUITE 404 - 1,307 SF

- 3 Private Offices
- 1 Large Private/Conference Room
- Windowline Offices with Operable Windows
- Open Plan Area with Original Hardwood Floors
- Brick Walls and Cement Pillars and Ceiling



VIEW
VIRTUAL
TOUR

SUITE 418 - 320 SF

- Large Open Office Space
- Great Natural Light
- 3 Large Operable Windows
- Facing Market Street



VIEW
VIRTUAL
TOUR

SUITE 500 - 1,200 SF

- Open Plan
- 3 Private Offices
- Great Natural Light
- Operable Windows



VIEW
VIRTUAL
TOUR

SUITE 700 - 2,531 SF

- Great Natural Light
- Open Floor Plan
- Private Offices
- Corner Location
- Operable Windows
- Kitchen



VIEW
VIRTUAL
TOUR

SUITE 701 - 1,100 SF

- Small Open Area
- 1 Large Private/Conference Room
- 2 Medium Private Offices
- Great Natural Light
- Operable Windows in All Private Offices
- Built-in Wall Unit and Shelving



VIEW
VIRTUAL
TOUR

SUITE 888 - 1,006 SF

- Reception Area
- Two Private Offices
- Medium Size Open Area
- Kitchenette/Copy Room
- Operable Windows
- View of Market Street Skyline



VIEW
VIRTUAL
TOUR

the information has been secured by starboard tcn from sources believed to be reliable. it is not guaranteed, however, and should be verified prior to consummating any transaction.

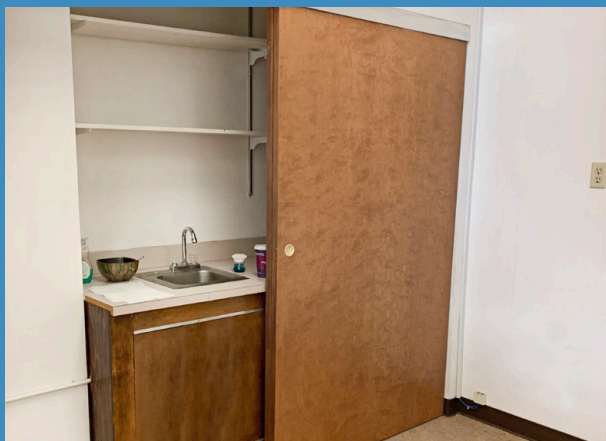
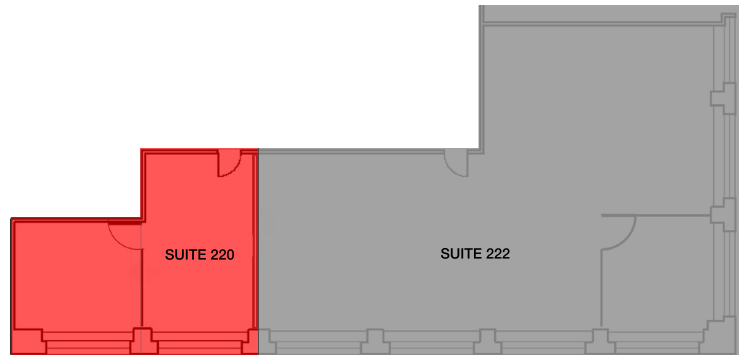
FOR LEASE

22 BATTERY ST. — SUITE 220



Floor / Suite No.	Suite 220
Square Footage:	754 SF
Ceiling Height :	9 Feet
Rate:	Negotiable
Lease Type:	Full Service
Term:	3 to 5 years

- Nice two-room office
- Great location building
- Close to Bart & Market Street
- Restaurants and Amenities



HANS HANSSON
C: 415-517-2589
E: hans@starboardnet.com
CA BRE# 00872902

FRANK VELLA
C: 650-464-8062
E: frank@starboardnet.com
CA BRE# 01104977

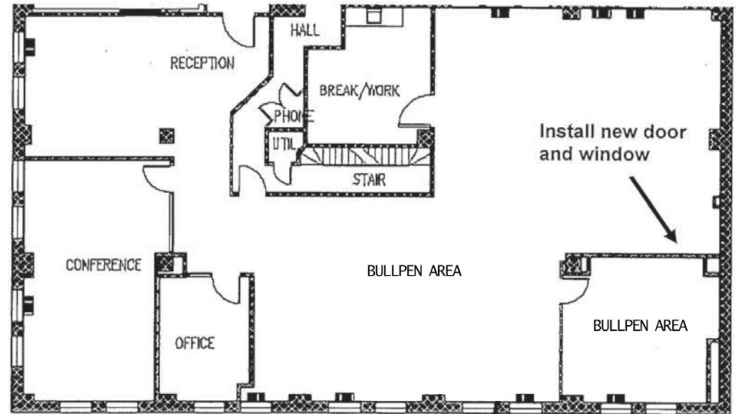


FOR LEASE

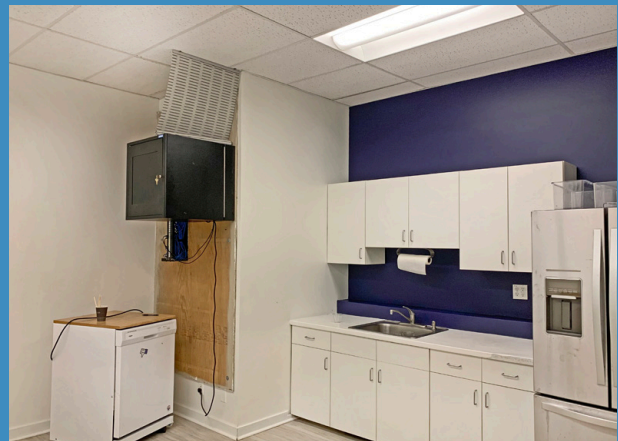
22 BATTERY ST. — SUITE 320



Floor / Suite No.	Suite 320
Square Footage:	3,706 SF
Ceiling Height :	9 Feet
Rate:	Negotiable
Lease Type:	Full Service
Term:	3 to 5 years



- 1 Large Conference Room 15-20 Seating
- 2 Private Offices
- 2 Bullpen Area/Open Space
- Reception Area
- 2 Built-in Phone Booths
- Great Natural Light and Operable Windows
- Kitchen



HANS HANSSON
C: 415-517-2589
E: hans@starboardnet.com
CA BRE# 00872902

FRANK VELLA
C: 650-464-8062
E: frank@starboardnet.com
CA BRE# 01104977



FOR LEASE

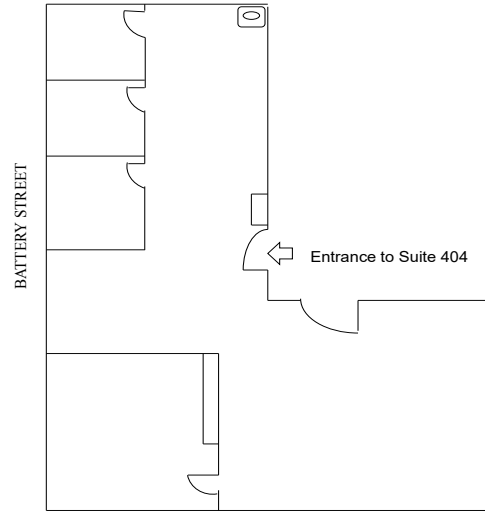
22 BATTERY ST. – SUITE 404



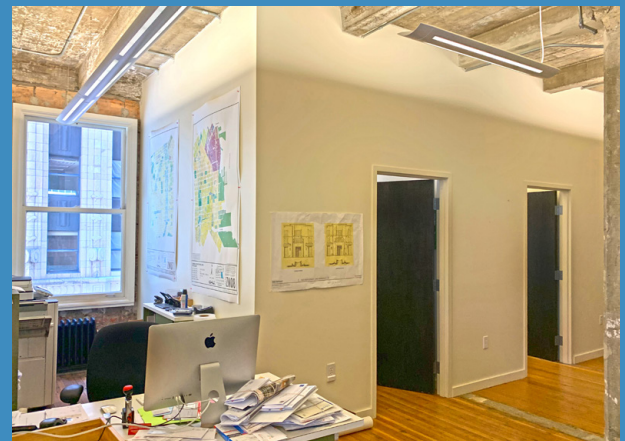
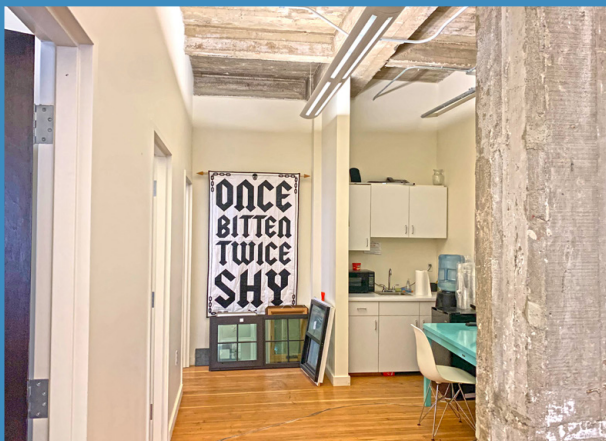
VIEW
VIRTUAL
TOUR

Floor / Suite No.	Suite 404
Square Footage:	1,307 SF
Ceiling Height :	9 Feet
Rate:	Negotiable
Lease Type:	Full Service
Term:	3 to 5 years

- 3 Private Offices
- 1 Large Private/Conference Room
- Windowline Offices with Operable Windows
- Open Plan Area
- Original Hardwood Floors
- Brick Walls and Cement Pillars and Ceiling



MARKET STREET



HANS HANSSON
C: 415-517-2589
E: hans@starboardnet.com
CA BRE# 00872902

FRANK VELLA
C: 650-464-8062
E: frank@starboardnet.com
CA BRE# 01104977



FOR LEASE

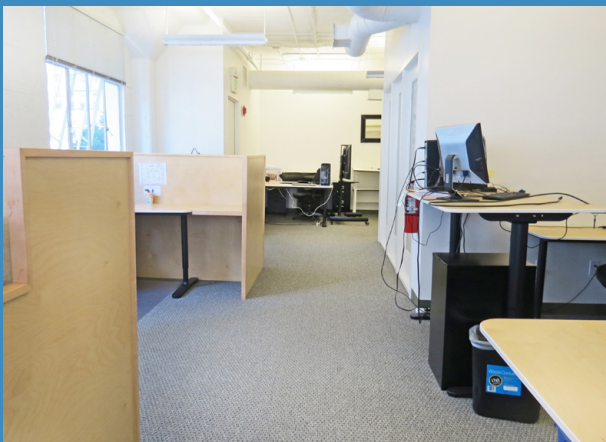
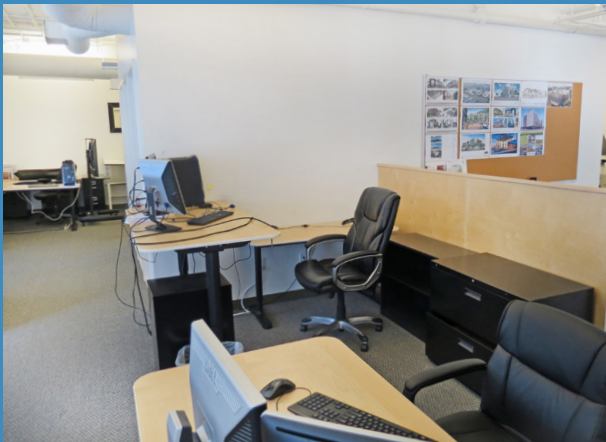
22 BATTERY ST. — SUITE 418



VIEW
VIRTUAL
TOUR

Floor / Suite No.	Suite 418
Square Footage:	320 SF
Ceiling Height :	9 Feet
Rate:	Negotiable
Lease Type:	Full Service
Term:	3 to 5 years

- Large Open Plan Office Space
- Great Natural Light
- 3 Large Operable Windows Facing Market Street



HANS HANSSON

C: 415-517-2589

E: hans@starboardnet.com

CA BRE# 00872902

FRANK VELLA

C: 650-464-8062

E: frank@starboardnet.com

CA BRE# 01104977



FOR LEASE

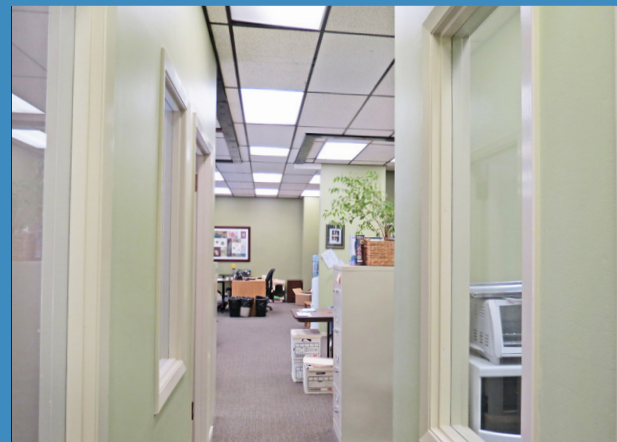
22 BATTERY ST. — SUITE 500



VIEW
VIRTUAL
TOUR

Floor / Suite No.	Suite 500
Square Footage:	1,200 SF
Ceiling Height :	9 Feet
Rate:	\$.00 per sf/yr
Lease Type:	Full Service
Term:	3 to 5 years

- Open Plan
- 3 Private Offices
- Great Natural Light
- Operable Windows



HANS HANSSON

C: 415-517-2589

E: hans@starboardnet.com

CA BRE# 00872902

FRANK VELLA

C: 650-464-8062

E: frank@starboardnet.com

CA BRE# 01104977

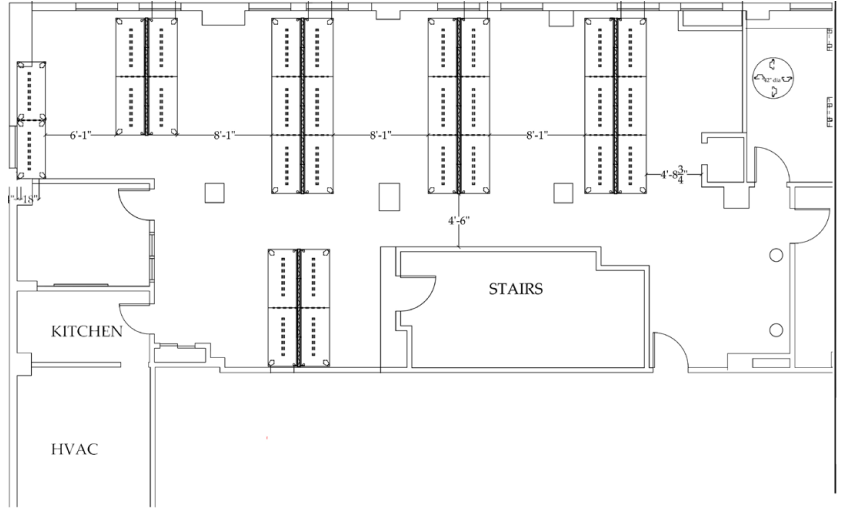


FOR LEASE

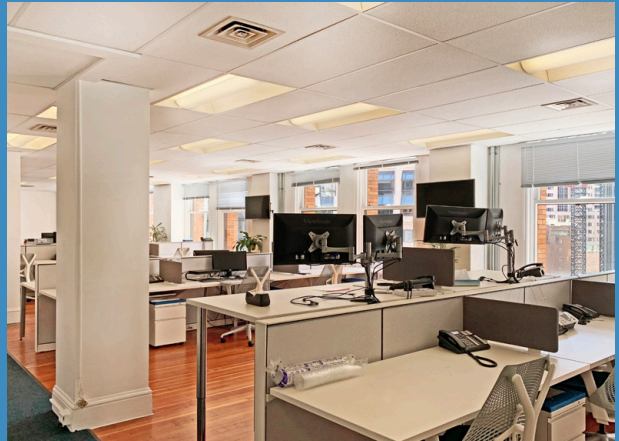
22 BATTERY ST. — SUITE 700



Floor / Suite No.	Suite 700
Square Footage:	2,531 SF
Ceiling Height :	9 Feet
Rate:	Negotiable
Lease Type:	Full Service
Term:	3 to 5 years



- Great Natural Light
- Open Floor Plan
- Private Offices
- Corner Location
- Operable Window
- Kitchen



HANS HANSSON
C: 415-517-2589
E: hans@starboardnet.com
CA BRE# 00872902

FRANK VELLA
C: 650-464-8062
E: frank@starboardnet.com
CA BRE# 01104977



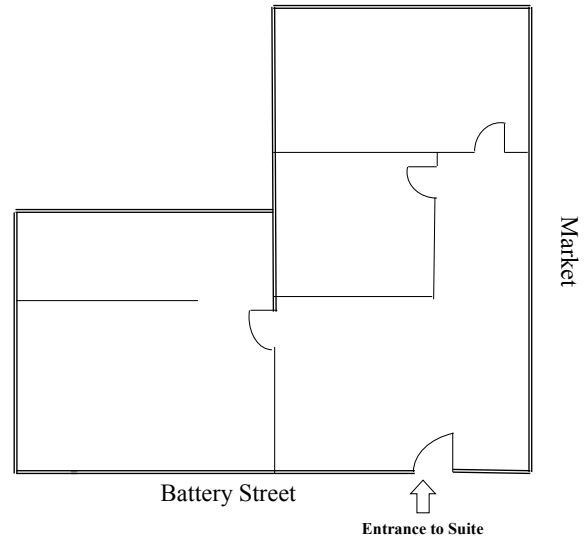
FOR LEASE

22 BATTERY ST. — SUITE 701



**VIEW
VIRTUAL
TOUR**

Floor / Suite No.	Suite 701
Square Footage:	1,100 SF
Ceiling Height :	9 Feet
Rate:	Negotiable
Lease Type:	Full Service
Term:	3 to 5 years



- Small Open Area
- 1 Large Private/Conference Room
- 2 Medium Private Offices
- Great Natural Light and Operable Windows in All Private Offices
- Built-in Wall Unit and Shelving



HANS HANSSON
C: 415-517-2589
E: hans@starboardnet.com
CA BRE# 00872902

FRANK VELLA
C: 650-464-8062
E: frank@starboardnet.com
CA BRE# 01104977



FOR LEASE

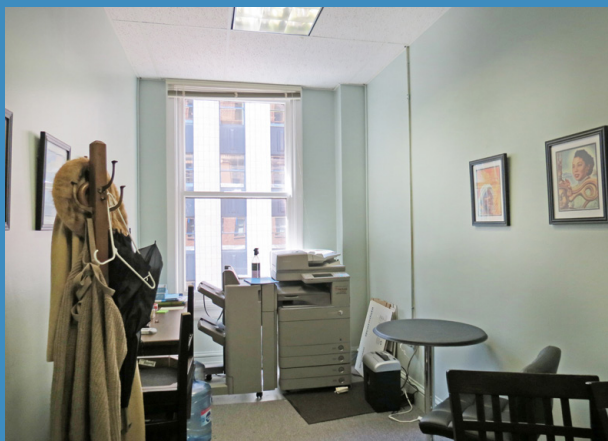
22 BATTERY ST. — SUITE 888



VIEW
VIRTUAL
TOUR

Floor / Suite No.	Suite 888
Square Footage:	1,006 SF
Ceiling Height :	9 Feet
Rate:	Negotiable
Lease Type:	Full Service
Term:	3 to 5 years

- Reception Area
- Two Private Offices
- Medium Size Open Area
- Kitchenette/Copy Room
- Operable Windows
- View of Market Street Skyline



HANS HANSSON

C: 415-517-2589

E: hans@starboardnet.com

CA BRE# 00872902

FRANK VELLA

C: 650-464-8062

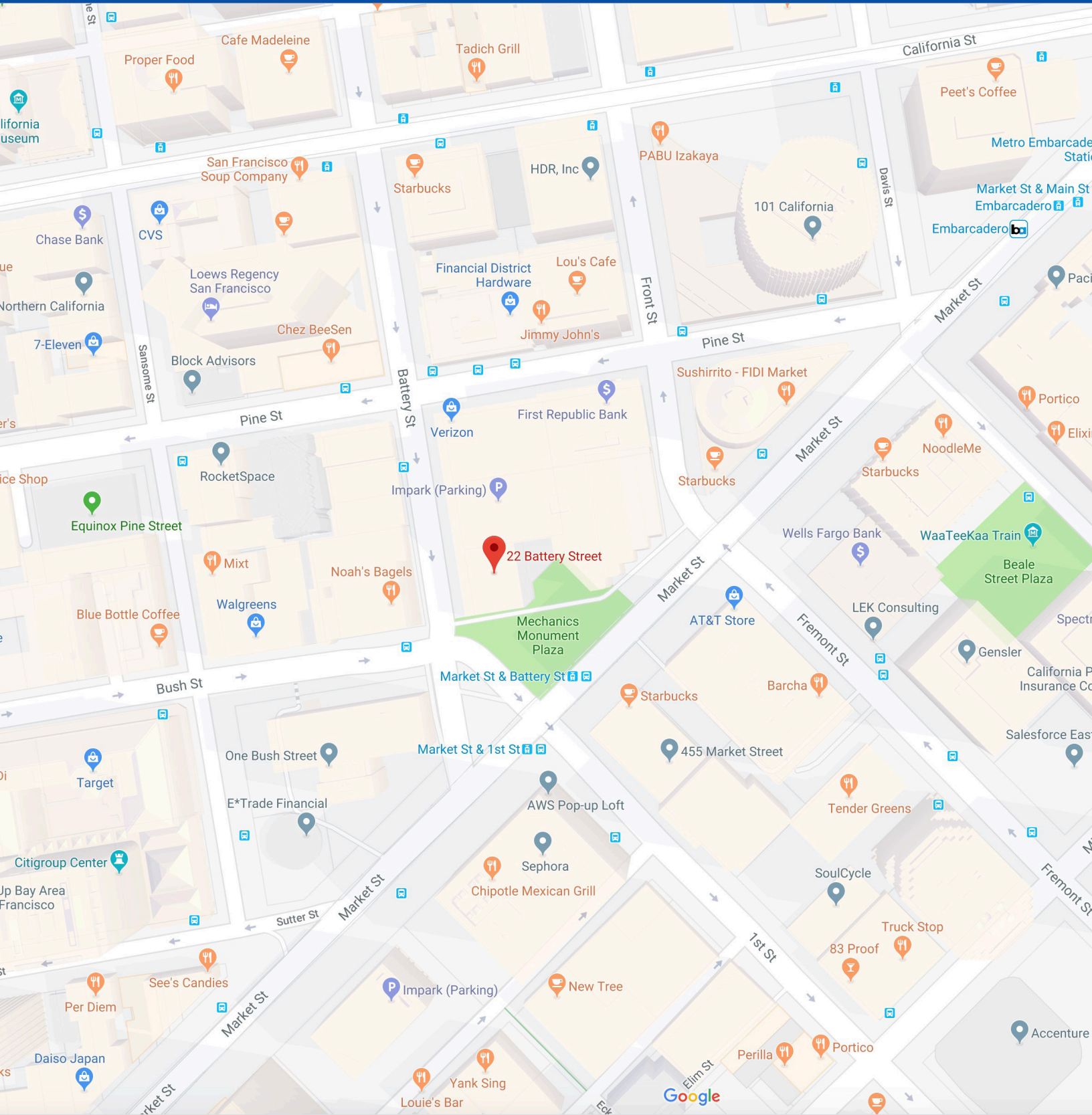
E: frank@starboardnet.com

CA BRE# 01104977



FOR LEASE

PROPERTY LOCATION
NICEST SMALL OFFICE SPACE FIDI



HANS HANSSON
C: 415-517-2589
E: hans@starboardnet.com
CA BRE# 00872902

FRANK VELLA
C: 650-464-8062
E: frank@starboardnet.com
CA BRE# 01104977

