

18143 Perkins Rd. E. Suite A

Leasing Information

- Upscale shopping center
- Strategic location near Alexander's Market, Zoe's Kitchen, & Blue Bayou Water Park just north of I-10 with.
- End cap location with drive-thru window
- Option to renovate for retail use also.
- 1,495 Sf
- Monthly Rent: \$25.00/sf
- Monthly CAM: \$5.14/sf



We know the market. The market knows us.

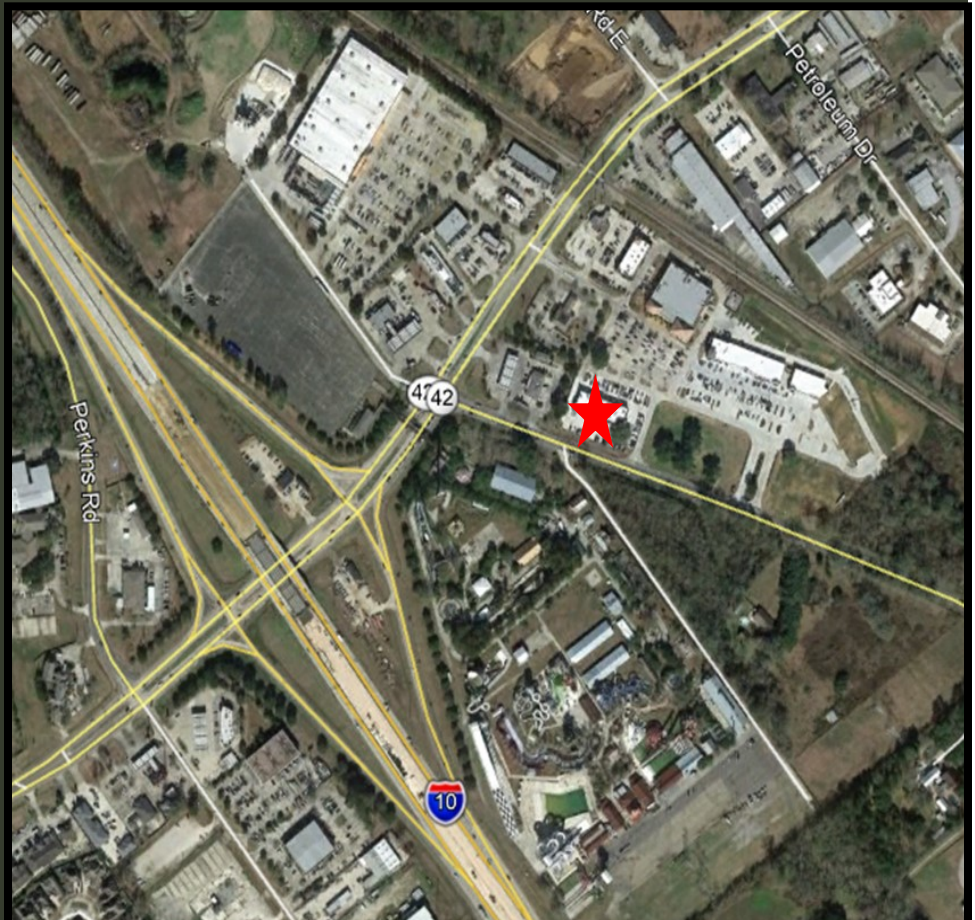
Images



We know the market.

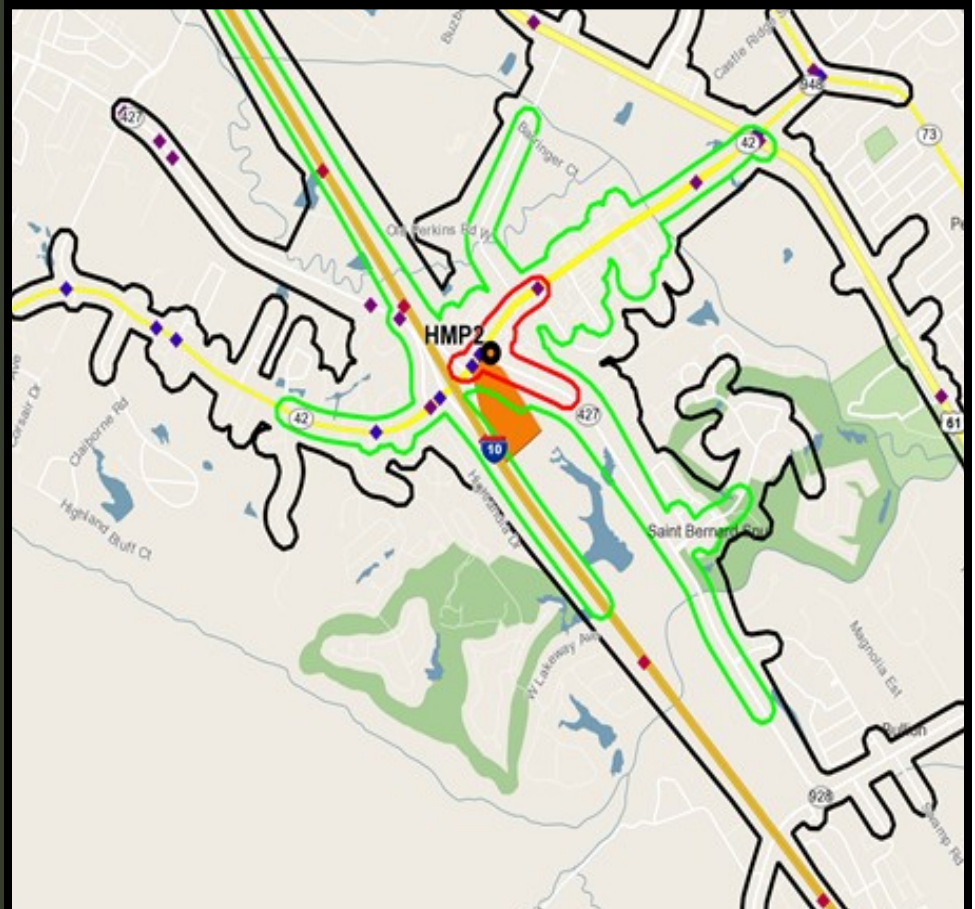
The market knows us.

Aerial



Traffic Count

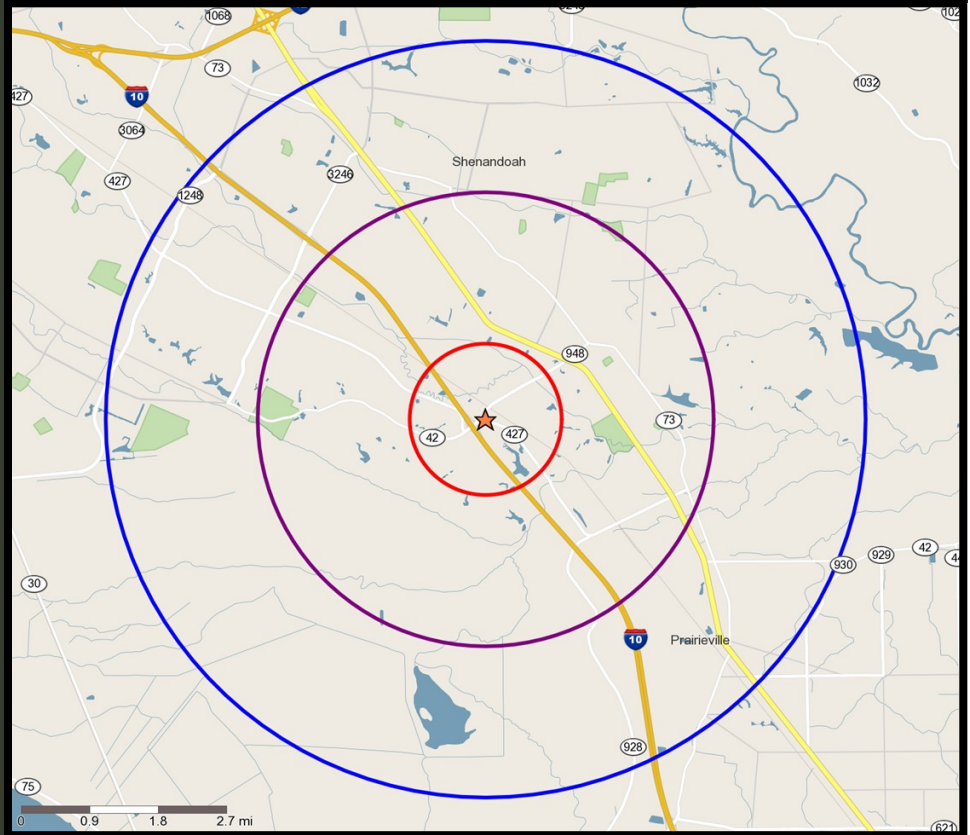
- ◆ Traffic Count - High (Above 47,500)
- ◆ Traffic Count - Above Average (21,000 to 47,500)
- ◆ Traffic Count - Average (9,300 to 21,000)
- ◆ Traffic Count - Below Average (4,100 to 9,300)
- ◆ Traffic Count - Low (Below 4,100)



We know the market. The market knows us.

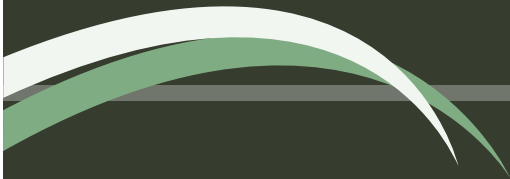
Demographics

- N Trade Areas (in miles) - 1
- N Trade Areas (in miles) - 3
- N Trade Areas (in miles) - 5



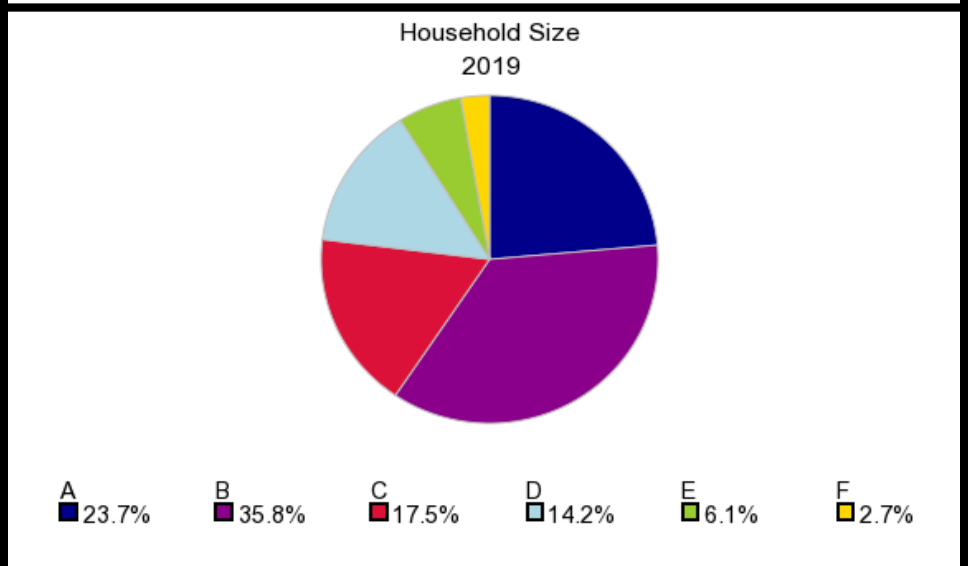
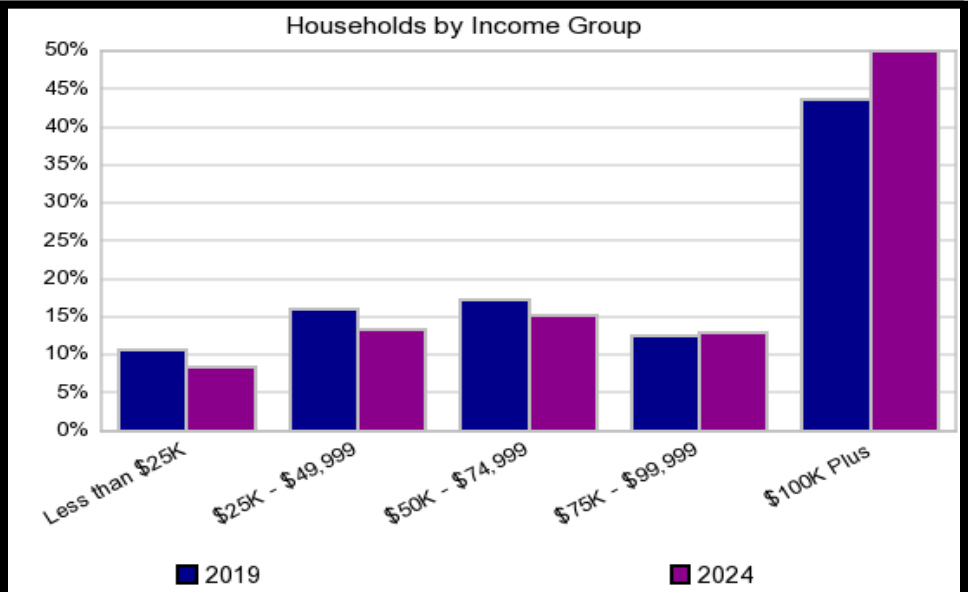
Population Demographics

	2000		2010		2019		2024		Percent Change	
	Census	%	Census	%	Estimates	%	Projections	%	2000 to 2010	2019 to 2024
Total Population	69,226		87,754		96,329		102,855		26.8%	6.8%
Population Density (Pop/Sq Mi)	881.97		1,205.60		1,227.28		1,310.42		36.7%	6.8%
Total Households	26,027		34,872		38,142		41,054		34.0%	7.6%
Population by Gender:										
Male	33,888	49.0%	42,467	48.4%	46,396	48.2%	49,687	48.3%	25.3%	7.1%
Female	35,338	51.1%	45,287	51.6%	49,933	51.8%	53,168	51.7%	28.2%	6.5%

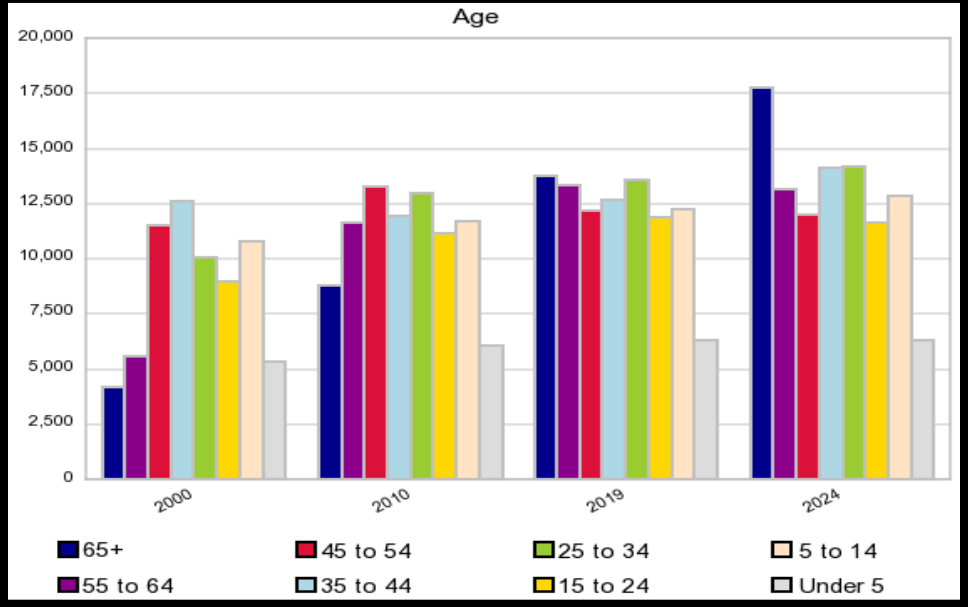


We know the market. The market knows us.

Demographics



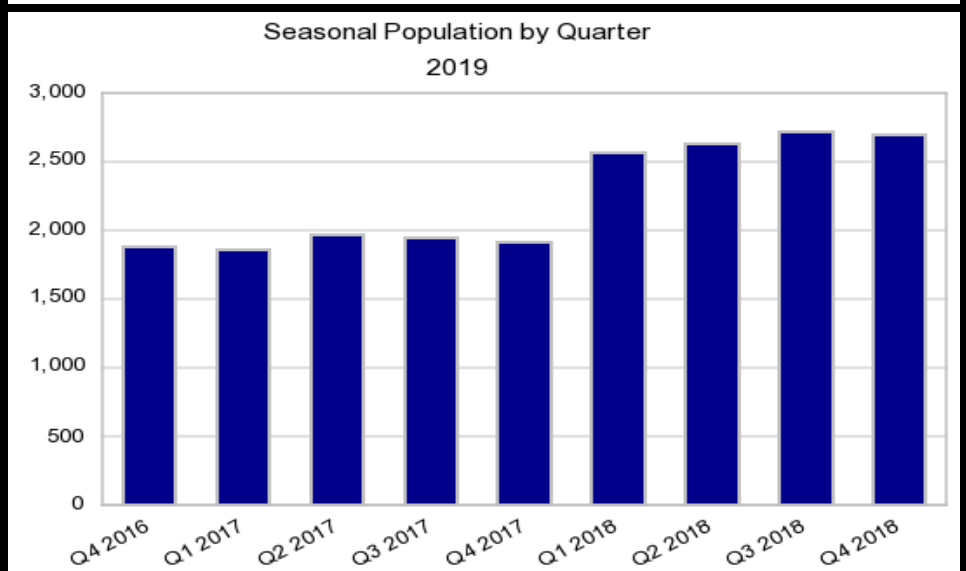
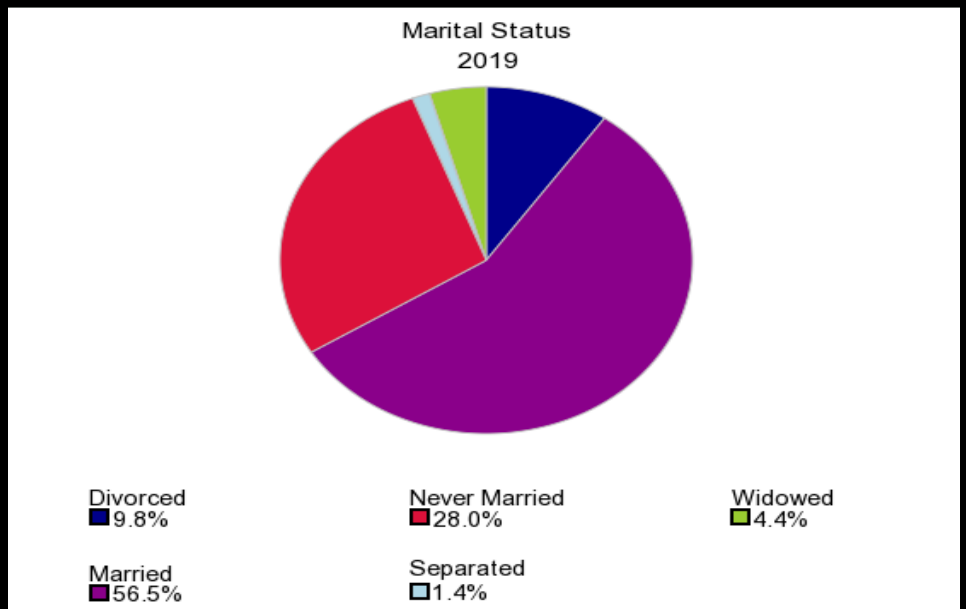
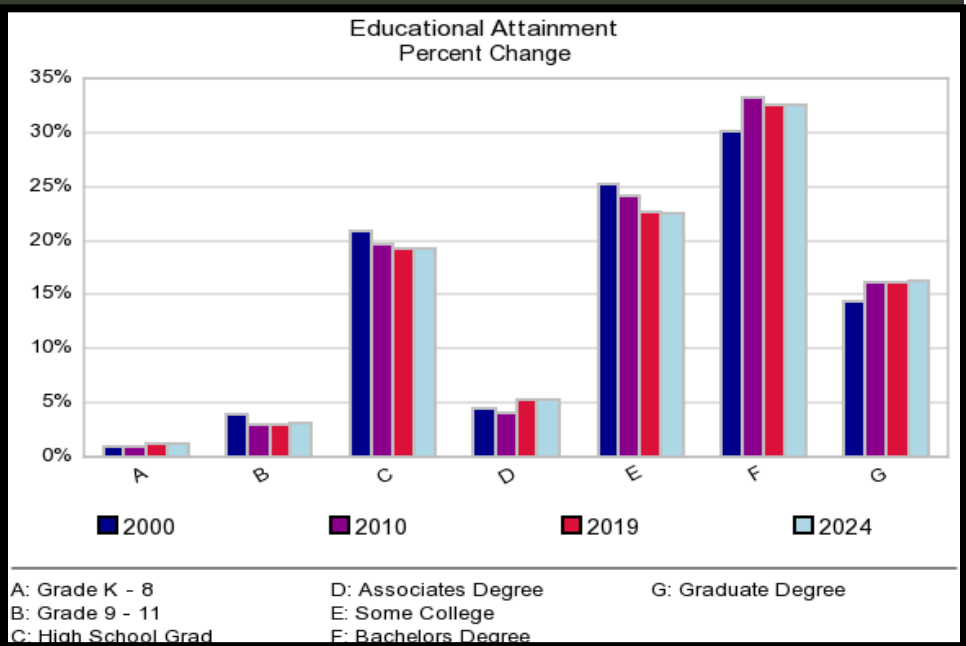
A: 1 Person per Household C: 3 People per Household E: 5 People per Household
 B: 2 People per Household D: 4 People per Household F: 6+ People per Household



We know the market.

The market knows us.

Demographics



We know the market. The market knows us.

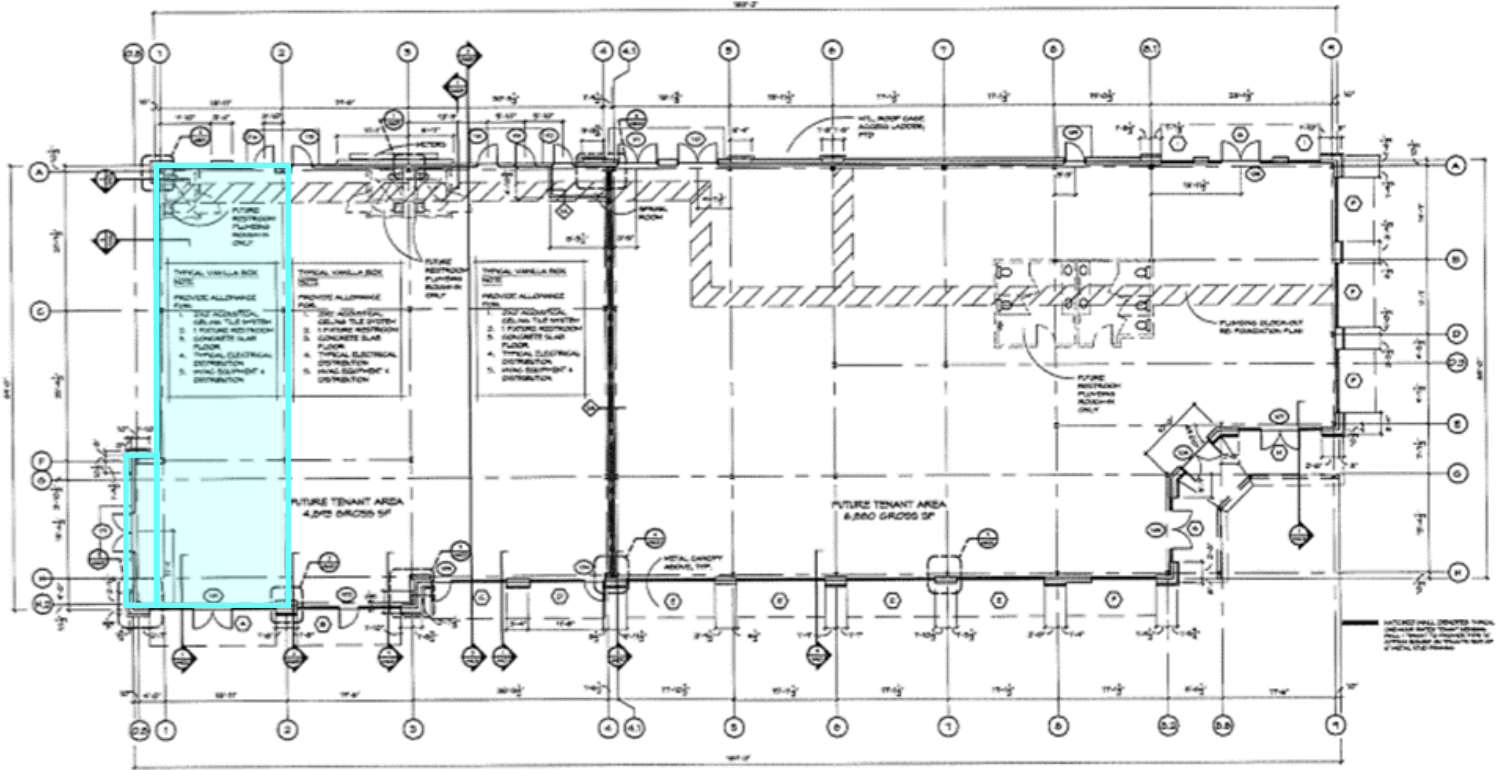
Demographics

Employment

	2000 Census		2010 Census		2019 Estimates		2024 Projections		Percent Change	
		%		%		%		%	2000 to 2010	2019 to 2024
Total Population 16+	52,113		68,732		76,550		82,072		31.9%	19.4%
Total Labor Force	38,045	73.0%	49,691	72.3%	52,005	67.9%	54,786	66.8%	30.6%	5.3%
Civilian, Employed	36,910	97.0%	48,317	97.2%	50,895	97.9%	53,608	97.9%	30.9%	5.3%
Civilian, Unemployed	1,111	2.9%	1,366	2.8%	1,100	2.1%	1,169	2.1%	23.0%	6.3%
In Armed Forces	24	0.1%	8	0.0%	9	0.0%	10	0.0%	-66.9%	1.4%
Not In Labor Force	14,068	27.0%	19,041	27.7%	24,546	32.1%	27,285	33.3%	35.3%	11.2%
% Blue Collar	8,065	21.8%	11,177	23.1%	12,066	23.7%	12,739	25.0%	38.6%	5.6%
% White Collar	28,919	78.2%	37,140	76.9%	38,829	76.3%	40,869	80.3%	28.4%	5.3%

Housing Unit

	2000 Census		2010 Census		2019 Estimates		2024 Projections		Percent Change	
		%		%		%		%	2000 to 2010	2019 to 2024
Total Housing Units	27,353		36,909		40,934		44,132		34.9%	7.8%
Total Occupied Housing Units	n/a	n/a	34,872	94.5%	38,142	93.2%	41,054	93.0%	n/a	7.6%
Owner Occupied: Owned with a mortgage or loan	n/a	n/a	19,512	56.0%	19,889	52.1%	21,427	52.2%	n/a	7.7%
Owner Occupied: Owned free and clear	n/a	n/a	5,980	17.1%	7,779	20.4%	8,534	20.8%	n/a	9.7%
Renter Occupied	n/a	n/a	9,379	26.9%	10,473	27.5%	11,092	27.0%	n/a	5.9%
Vacant	1,326	4.9%	2,037	5.5%	2,792	6.8%	3,078	7.0%	53.6%	10.3%



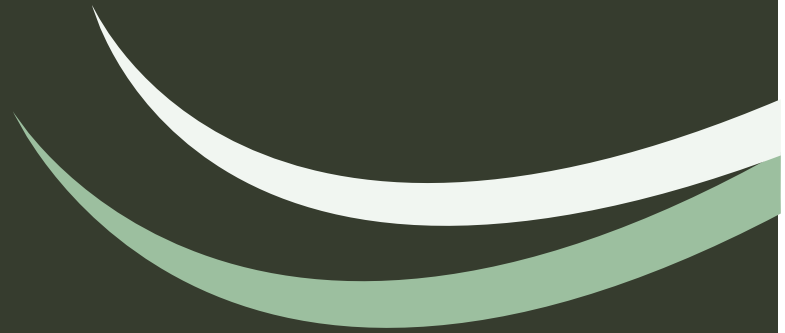
1 BUILDING SHELL FLOOR PLAN
1/8" = 1'-0"

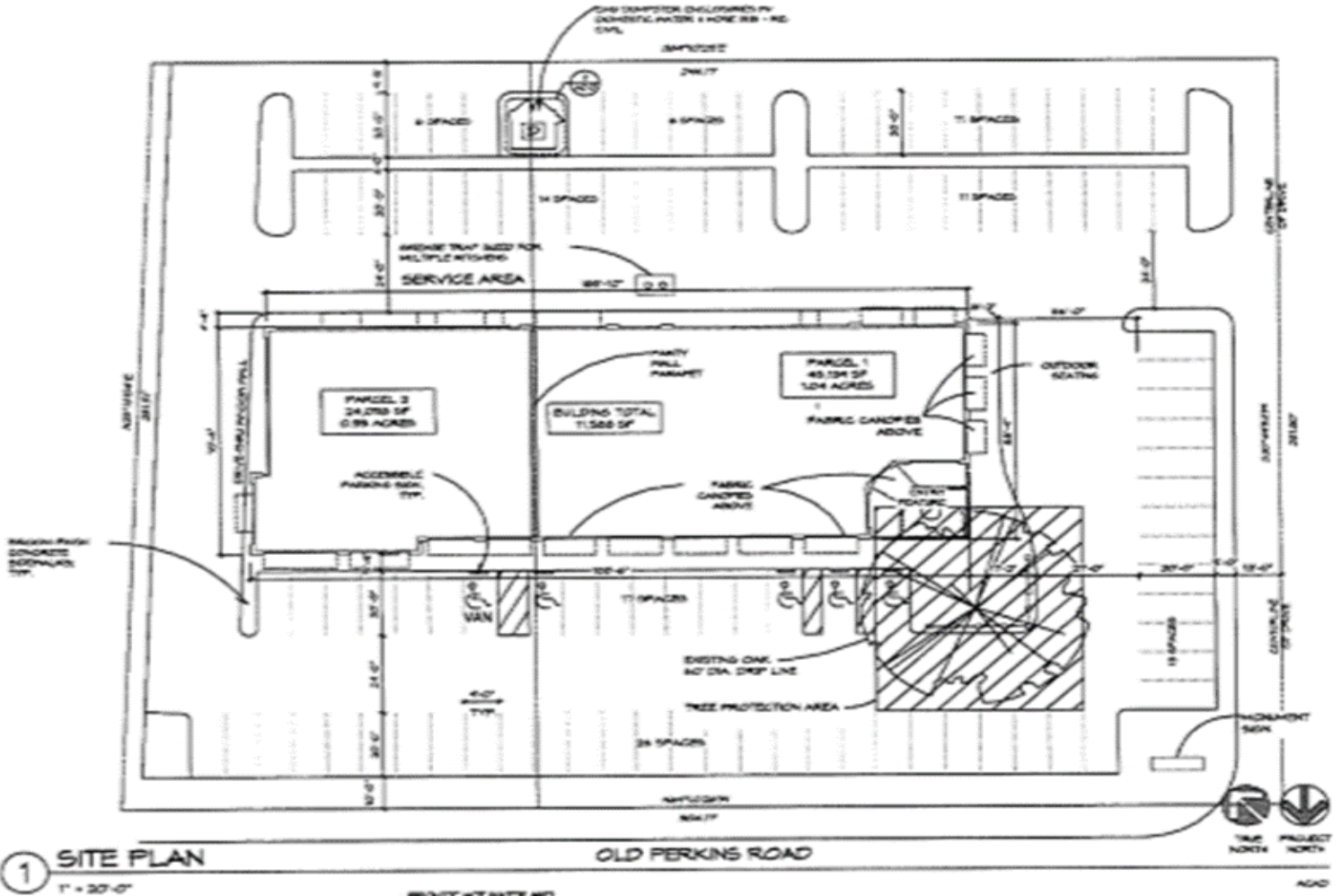


We know the market. The market knows us.

Floor Plan

Suite A





We know the market. The market knows us.

Survey