

FOR LEASE

FULL BUILDING OPPORTUNITY HAYES VALLEY

1231 STEVENSON STREET

SAN FRANCISCO, CA 94103



FOR MORE INFORMATION, CONTACT:

MARK MEIER
Sales & Leasing Associate
E: mark@starboardnet.com
C: 415-299-7042 | LIC #02047169

CRAIG HANSSON
Sales & Leasing Director
E: craig@starboardnet.com
C: 415.710.7768 | LIC #01841643



ENTREPRENEURIAL • LOCAL • INDEPENDENT



1231 Stevenson St., San Francisco, CA 94103

Floor / Suite #	Entire Building
Square Ft.	±5,336 Square Feet
Rate:	Negotiable
Lease Type:	Industrial Gross
Term:	3 to 5 years

Building Description

In the last several years, the sunny enclave of Hayes Valley—wedged between Mid-Market, Lower Haight, and the Western Addition—has become a choice spot to while away an afternoon sipping craft beer and hunting limited-edition designer tops. The transition was initially caused by 1989's Loma Prieta earthquake, which made part of the Central Highway that ran directly through the neighborhood not safe. The local residents persistently (and successfully) rallied against the rebuilding of the highway, the area has had a chance to evolve. Two decades of steady regeneration have turned Hayes Valley into a haven for shoppers and bon vivant, a place where you can pick up a unique piece for your wardrobe or indulge in delectable, internationally inspired cuisine.



Space Description

Top Floor

- » One Large Open Plan
- » One Large Conference Room

Ground Floor

- » 2 Large Bullpen Areas
- » 1 Large Conference Room
- » 2 Private Offices
- » Kitchenette
- » 1 Storage Room
- » 2 ADA Accessible Restrooms



FOR MORE INFORMATION, CONTACT:

MARK MEIER
Sales & Leasing Associate
E: mark@starboardnet.com
C: 415-299-7042 | LIC #02047169

CRAIG HANSSON
Sales & Leasing Director
E: craig@starboardnet.com
C: 415.710.7768 | LIC #01841643



ENTREPRENEURIAL • LOCAL • INDEPENDENT





FOR MORE INFORMATION, CONTACT:

MARK MEIER
Sales & Leasing Associate
E: mark@starboardnet.com
C: 415-299-7042 | LIC #02047169

CRAIG HANSSON
Sales & Leasing Director
E: craig@starboardnet.com
C: 415.710.7768 | LIC #01841643





FOR MORE INFORMATION, CONTACT:

MARK MEIER
Sales & Leasing Associate
E: mark@starboardnet.com
C: 415-299-7042 | LIC #02047169

CRAIG HANSSON
Sales & Leasing Director
E: craig@starboardnet.com
C: 415.710.7768 | LIC #01841643



ENTREPRENEURIAL • LOCAL • INDEPENDENT





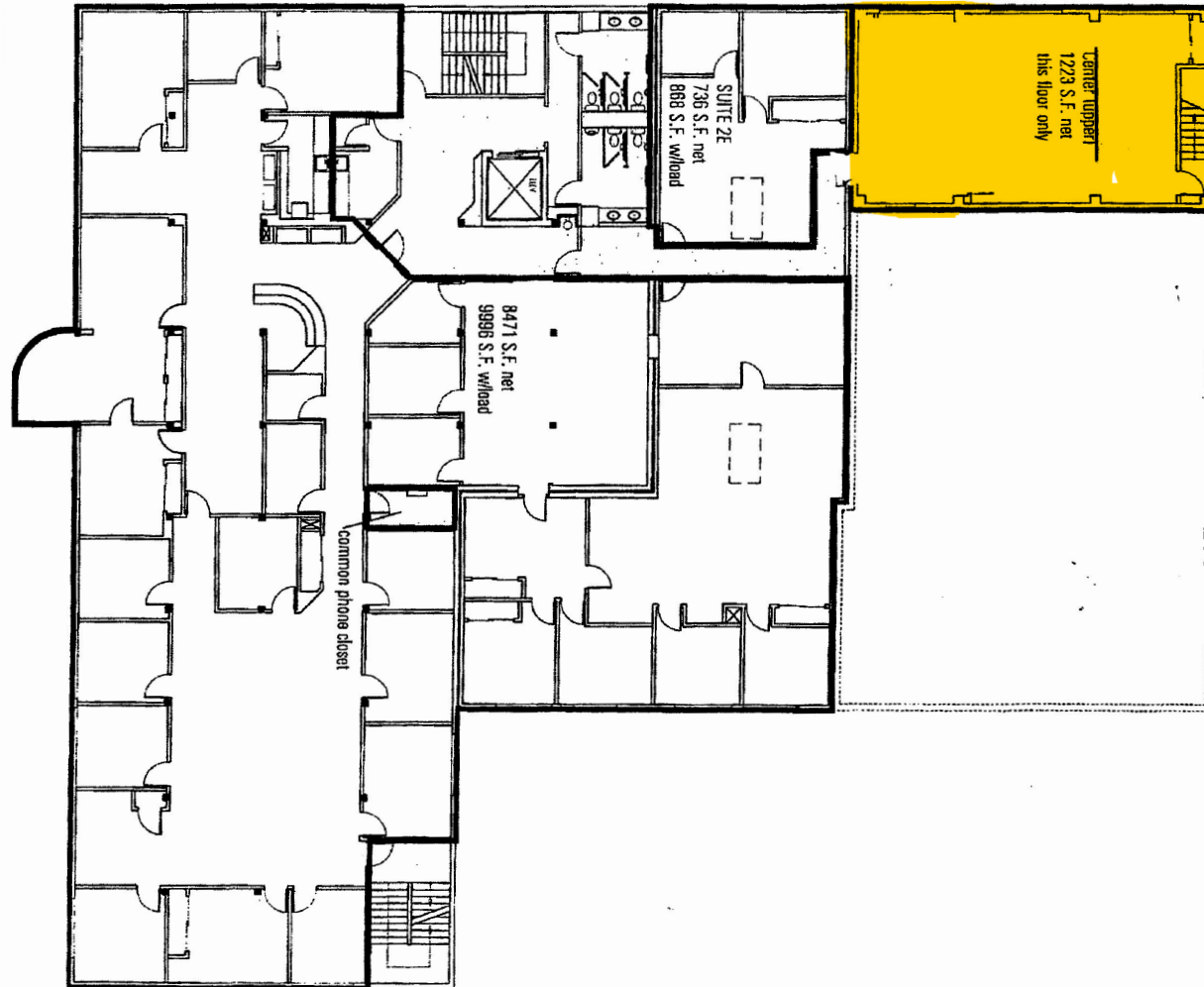
FOR MORE INFORMATION, CONTACT:

MARK MEIER
Sales & Leasing Associate
E: mark@starboardnet.com
C: 415-299-7042 | LIC #02047169

CRAIG HANSSON
Sales & Leasing Director
E: craig@starboardnet.com
C: 415.710.7768 | LIC #01841643



FLOOR PLAN - SUITE 201



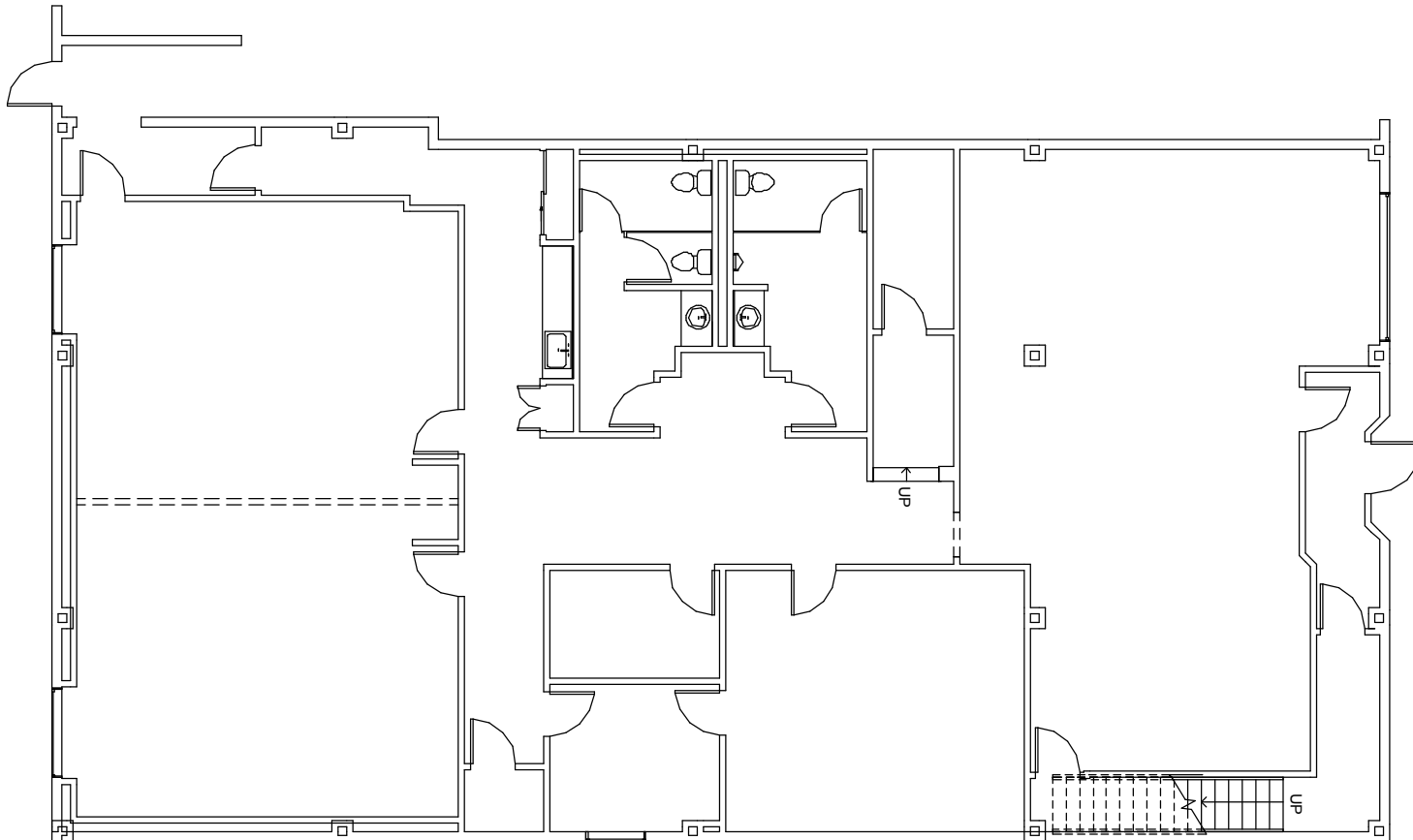
FOR MORE INFORMATION, CONTACT:

MARK MEIER
Sales & Leasing Associate
E: mark@starboardnet.com
C: 415-299-7042 | LIC #02047169

CRAIG HANSSON
Sales & Leasing Director
E: craig@starboardnet.com
C: 415.710.7768 | LIC #01841643



FLOOR PLAN - SUITE 101



FOR MORE INFORMATION, CONTACT:

MARK MEIER
Sales & Leasing Associate
E: mark@starboardnet.com
C: 415-299-7042 | LIC #02047169

CRAIG HANSSON
Sales & Leasing Director
E: craig@starboardnet.com
C: 415.710.7768 | LIC #01841643





FOR MORE INFORMATION, CONTACT:

MARK MEIER
 Sales & Leasing Associate
 E: mark@starboardnet.com
 C: 415-299-7042 | LIC #02047169

CRAIG HANSSON
 Sales & Leasing Director
 E: craig@starboardnet.com
 C: 415.710.7768 | LIC #01841643



ENTREPRENEURIAL • LOCAL • INDEPENDENT