

**FOR LEASE**

**NEW OFFICE SPACE OPEN PLAN IN SOMA**  
**82 MARY ST.**  
SAN FRANCISCO, CA 94103

**FOR MORE INFORMATION,  
CONTACT:**

**HANS HANSSON**  
hans@starboardnet.com  
415.765.6897 | LIC #00872902

**CRAIG HANSSON**  
craig@starboardnet.com  
415.710.7768 | LIC #01841643



# FOR LEASE

## 82 Mary Street - San Francisco, CA 94103

Floor/Suite:	1st Floor
Square Ft.	1,600 Square Feet
Rate:	\$7,000 Per Month
Lease Type	Industrial Gross
Term:	3 - 5 Years

### Property Overview

- » 82 Mary is located in the SOMA District known for its vast warehouses. Surrounded by Yerba Buena Gardens, the convention complex Mascone Center and several museums, including the San Francisco Museum of Modern Art SFMOMA, the area also includes upscale dining and high-energy nightclubs.

### Building Highlights

- » Open Floor Plan
- » Great Natural Light
- » Two Skylights
- » High-End Kitchen
- » Wooden Floors
- » ADA Unisex Bathroom with Shower



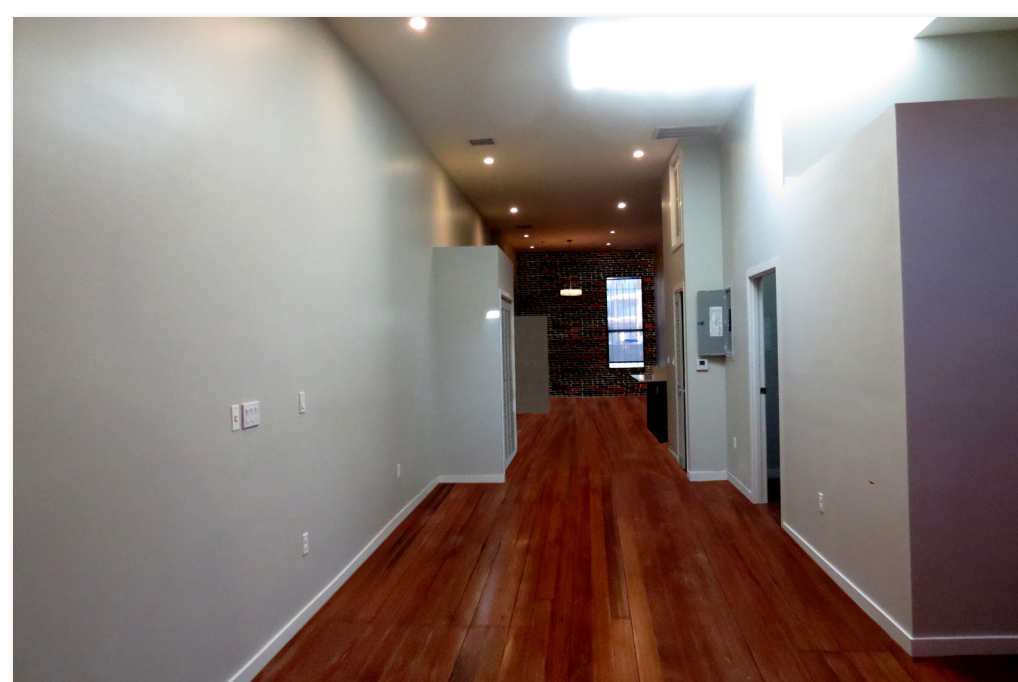
FOR MORE INFORMATION,  
CONTACT:

**HANS HANSSON**  
hans@starboardnet.com  
415.765.6897 | LIC #00872902

**CRAIG HANSSON**  
craig@starboardnet.com  
415.710.7768 | LIC #01841643

**STARBOARD**  
COMMERCIAL REAL ESTATE  
ENTREPRENEURIAL • LOCAL • INDEPENDENT

**TCN**  
WORLDWIDE  
REAL ESTATE SERVICES



FOR MORE INFORMATION,  
CONTACT:

**HANS HANSSON**  
hans@starboardnet.com  
415.765.6897 | LIC #00872902

**CRAIG HANSSON**  
craig@starboardnet.com  
415.710.7768 | LIC #01841643

 **STARBOARD**  
COMMERCIAL REAL ESTATE  
ENTREPRENEURIAL • LOCAL • INDEPENDENT

**TCN**  
WORLDWIDE  
REAL ESTATE SERVICES



FOR MORE INFORMATION,  
CONTACT:

**HANS HANSSON**  
hans@starboardnet.com  
415.765.6897 | LIC #00872902

**CRAIG HANSSON**  
craig@starboardnet.com  
415.710.7768 | LIC #01841643

 **STARBOARD**  
COMMERCIAL REAL ESTATE  
ENTREPRENEURIAL • LOCAL • INDEPENDENT

**TCN**  
WORLDWIDE  
REAL ESTATE SERVICES

# PROPERTY LOCATION



FOR MORE INFORMATION,  
CONTACT:

**HANS HANSSON**  
hans@starboardnet.com  
415.765.6897 | LIC #00872902

**CRAIG HANSSON**  
craig@starboardnet.com  
415.710.7768 | LIC #01841643

**STARBOARD**  
COMMERCIAL REAL ESTATE  
ENTREPRENEURIAL • LOCAL • INDEPENDENT

**TCN**  
WORLDWIDE  
REAL ESTATE SERVICES