

FOR LEASE

236 8TH STREET, SAN FRANCISCO CA 94103
NEWLY RENOVATED LOBBY AND ENTRY



HANS HANSSON | Principal
E. hans@starboardnet.com
M. 1-415-517-2589 | BRE 00872902

CRAIG HANSSON | Sales & Leasing Director
E. craig@starboardnet.com
M. 1-415-710-7768 | BRE 01841643

This information has been secured by Starboard TCN from sources believed to be reliable. It is not guaranteed, however, and should be verified prior to consummating any transaction. California Dept. of Real Estate License # 01103056



236 8TH STREET

SAN FRANCISCO, CA 94103

Floor / Suite: Suite B

Rentable Square Feet: ± 2,572

Lease Price / Rate: \$45.00 per SF/YR

Lease Type: Industrial Gross

Term: 3 to 5 years

BUILDING DESCRIPTION

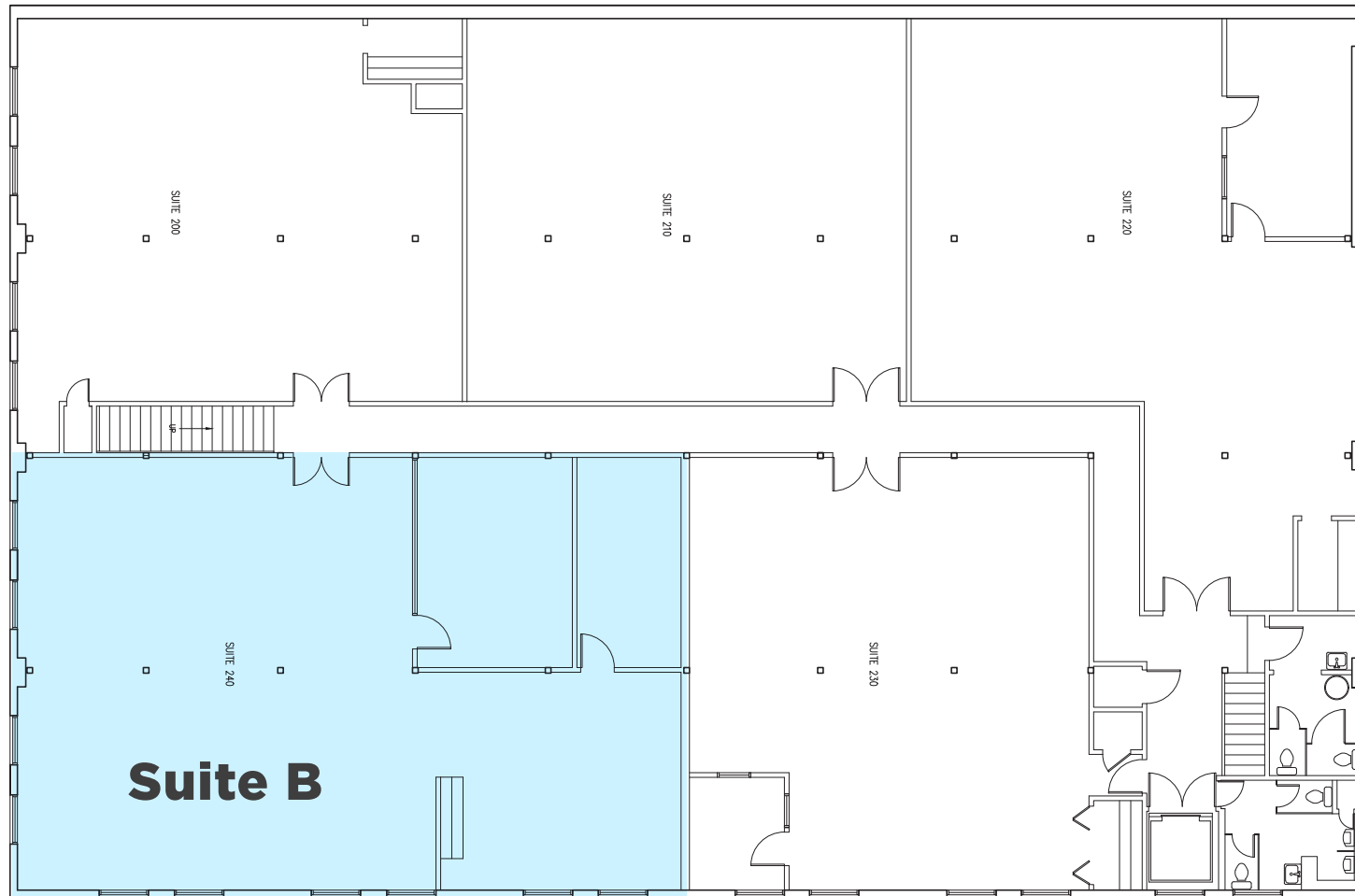
- Extremely Rare Space with a Tech Feel
- Newly Renovated Lobby and Entry

SPACE HIGHLIGHTS

- Great Natural Light
- Open Plan with Skylights
- 1 Large Conference Room with Skylight
- 1 Medium Conference Room/Private Office
- Kitchenette Area with Dishwasher and Refrigerator
- High Ceilings
- Carpet Throughout
- Operable Windows







MACRO POINTS ON INTEREST

236 8TH STREET
San Francisco, CA 94103



HANS HANSSON | Principal
E. hans@starboardnet.com
M. 1-415-517-2589 | BRE 00872902

CRAIG HANSSON | Sales & Leasing Director
E. craig@starboardnet.com
M. 1-415-710-7768 | BRE 01841643

This information has been secured by Starboard
TCN from sources believed to be reliable. It is not
guaranteed, however, and should be verified prior
to consummating any transaction. California Dept.
of Real Estate License # 01103056

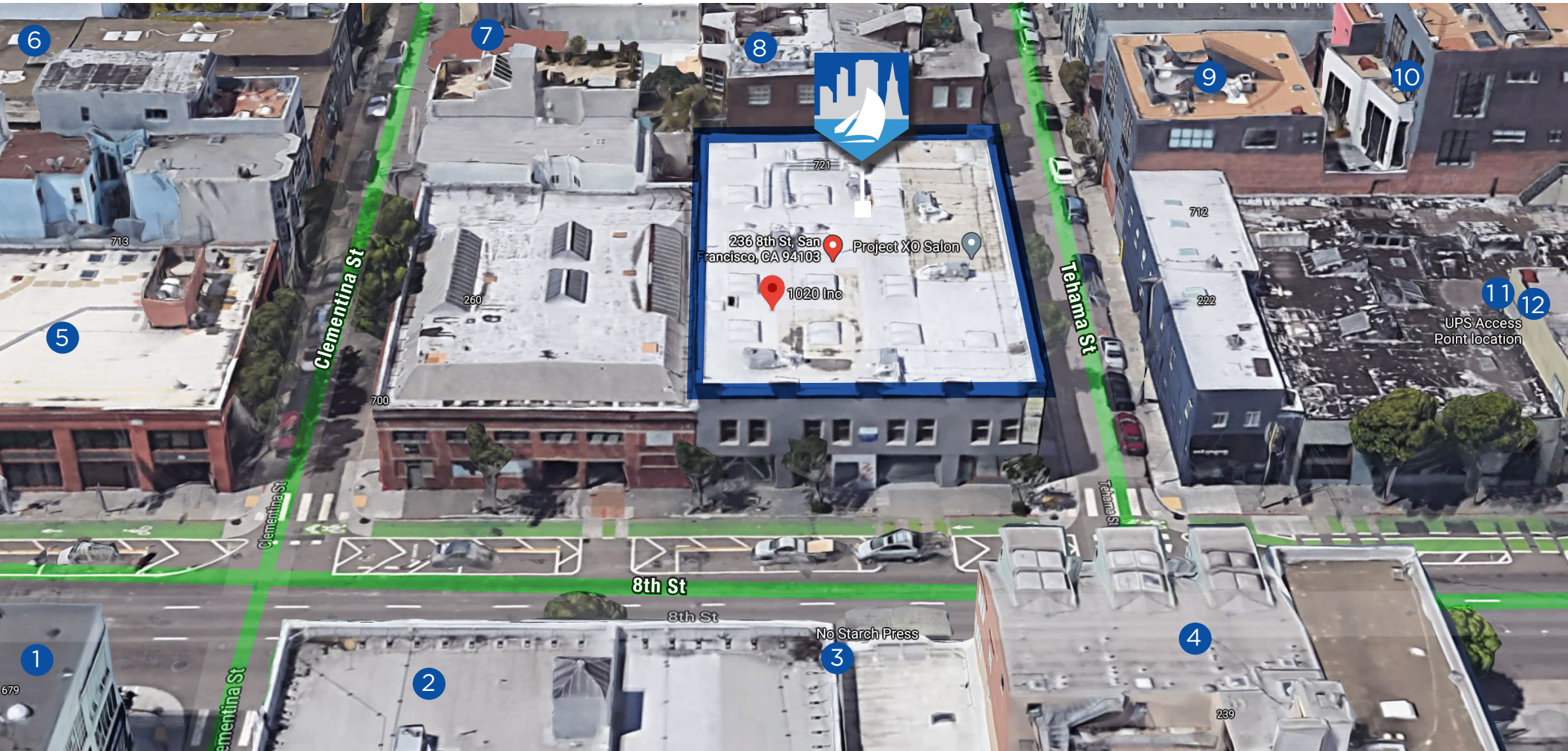
 **STARBOARD**
COMMERCIAL REAL ESTATE
ENTREPRENEURIAL • LOCAL • INDEPENDENT

 **TCN**
WORLDWIDE
REAL ESTATE SERVICES

MICRO POINTS ON INTEREST

236 8TH STREET
San Francisco, CA 94103

- 1 SF MOTO
- 2 GOOGLE FIBER WEBPASS
- 3 NO STARCH PRESS
- 4 ANITA
- 5 BETTER UP
- 6 JAMES CARRIÈRE STUDIOS LTD.
- 7 A DEEPERTOUCH MASSAGE
- 8 NATASHA HOPKINSON
- 9 JAYS TATTOO
- 10 MIKE'S BIKES
- 11 UPS ACCESS POINT LOCATION
- 12 UNI-MART



HANS HANSSON | Principal
E. hans@starboardnet.com
M. 1-415-517-2589 | BRE 00872902

CRAIG HANSSON | Sales & Leasing Director
E. craig@starboardnet.com
M. 1-415-710-7768 | BRE 01841643

This information has been secured by Starboard TCN from sources believed to be reliable. It is not guaranteed, however, and should be verified prior to consummating any transaction. California Dept. of Real Estate License # 01103056

 **STARBOARD**
COMMERCIAL REAL ESTATE
ENTREPRENEURIAL • LOCAL • INDEPENDENT

 **TCN**
WORLDWIDE
REAL ESTATE SERVICES