

1122-1126 Folsom Street

2-STORY OFFICE/RETAIL BUILDING
FOR SALE



MAYA ISMAIEL | Sales & Leasing Associate
maya@starboardnet.com
650.619.6787 | DRE 02042011

HANS HANSSON | Principal
hans@starboardnet.com
415.765.6897 | BRE 00872902



1122-1126 FOLSOM ST., SAN FRANCISCO, CA

FLOOR / SUITE: ENTIRE BUILDING

BUILDING SIZE: GROUND FLOOR - ± 4,000 SF
2ND FLOOR - ± 4,000 SF

ASKING PRICE: \$5,750,000

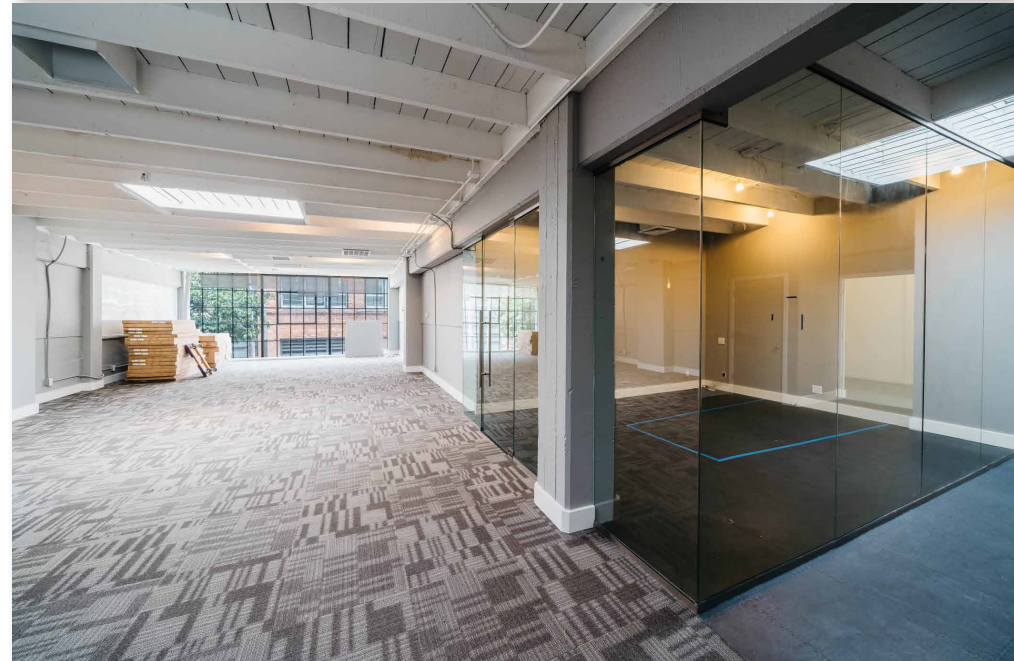
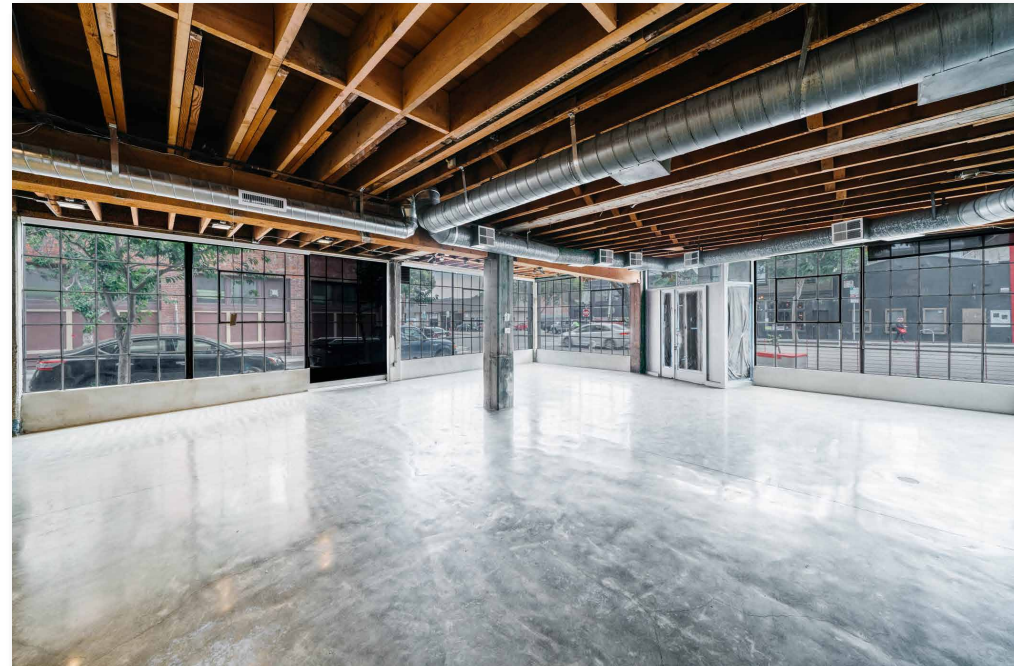
BUILDING DESCRIPTION

Great Opportunity for an Owner/User or Investment/Development Site. Completely renovated from the inside out, this property is located in the South of Market district of San Francisco. Only three blocks from Civic Center Bart Station and one block from the I-80 Freeway. This property allows for an easy commute and walkability to nearby coffee shops, restaurants, and Market Street retail.

- Total Square Footage of Building is approximately 8,000 SF
- Zoning - NCT Folsom Street Neighborhood Commercial Transit

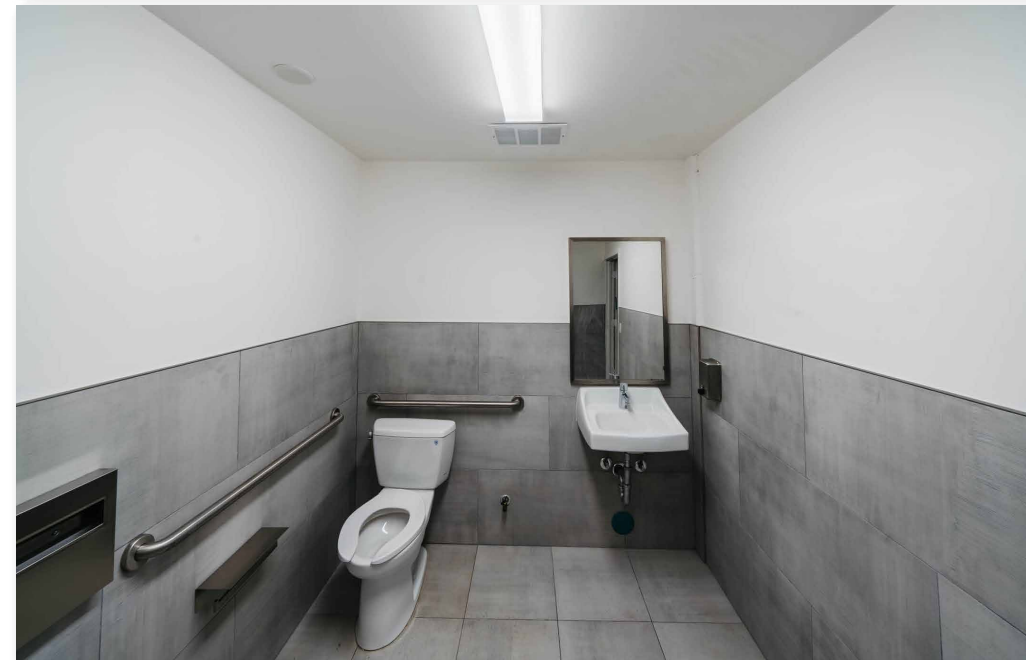
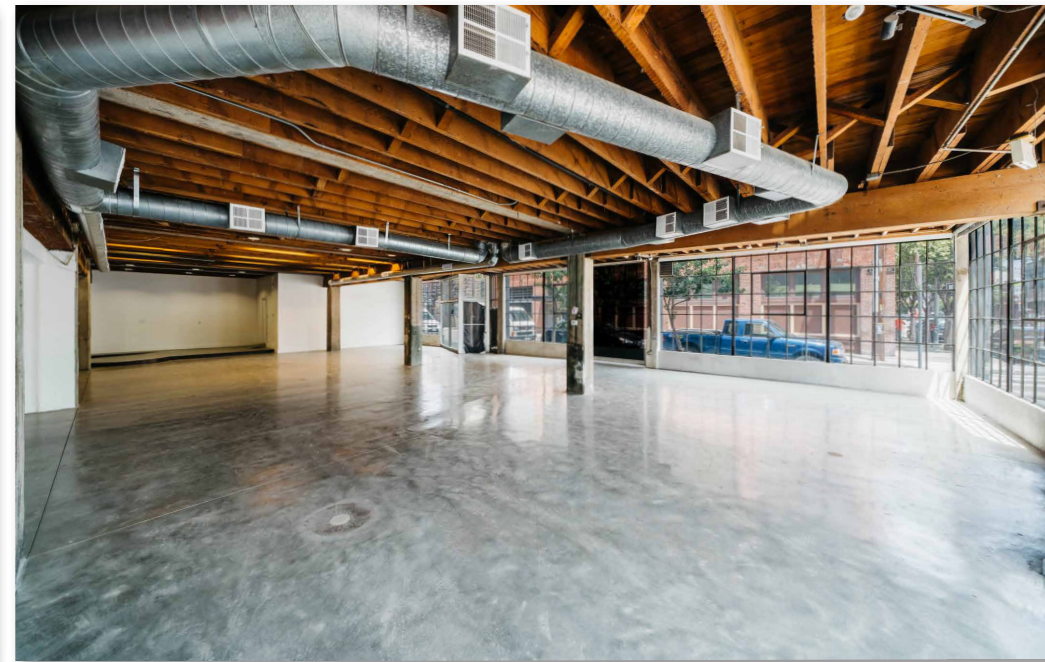
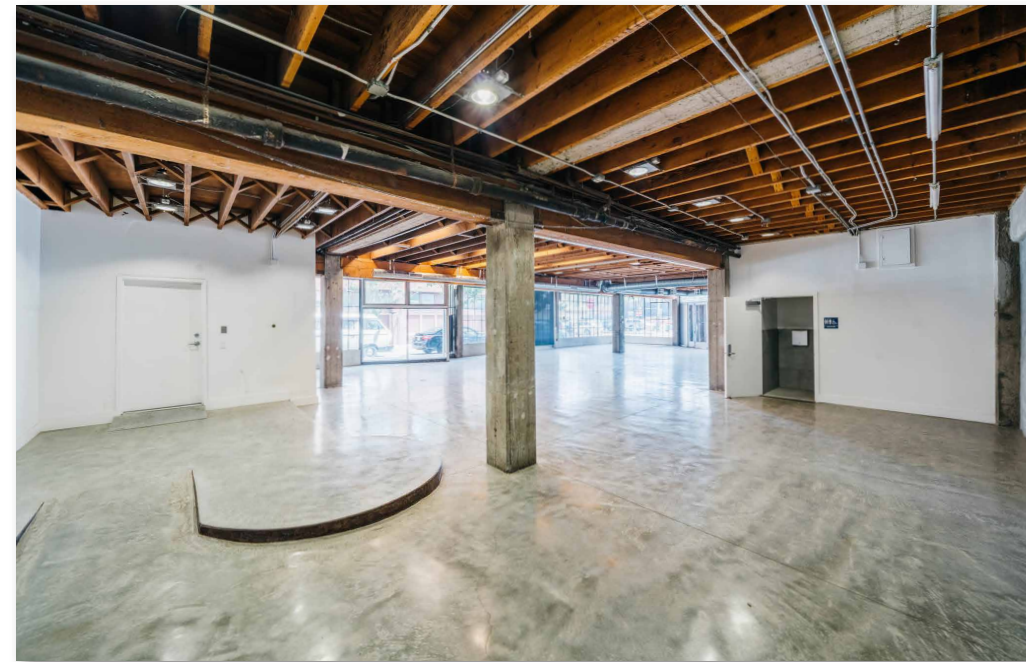
PROPERTY HIGHLIGHTS

- ± 8,000 SF
- End-Cap Building
- Large Windows for 180-Degree View
- Exposed Ceilings
- Great Natural Light
- New Lighting
- New Concrete Slab Surface
- Heavy Power and Gas
- Opportunity for Creative Use with GF Floor Plan
- On-Site Parking
- Permitted Outdoor Parklet
- Drive-In Access on Langton St.
- Electronic Roll-up Garage Door
- Brand New HVAC System
- ADA Compliant Restrooms
- Newly Built Kitchen, Coffee Bar, & Conference Room



GROUND FLOOR

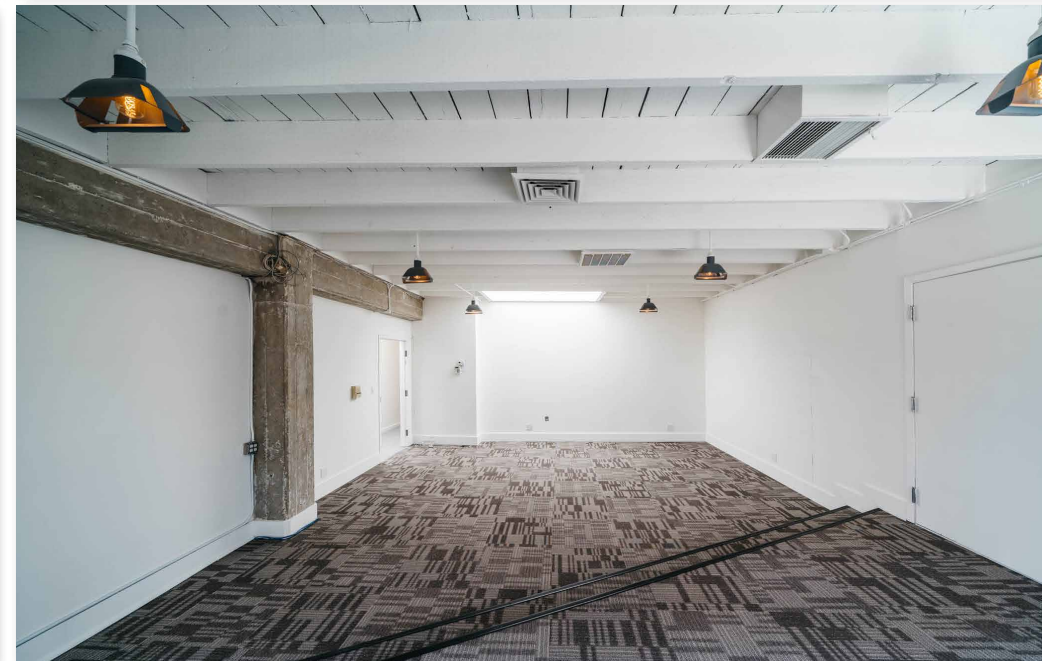
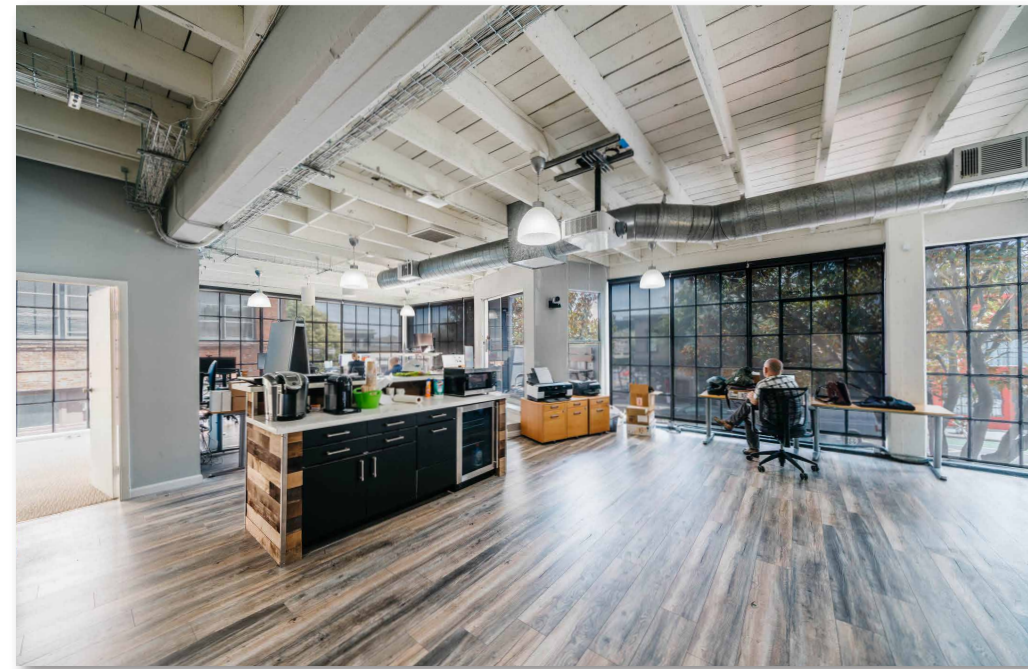
1122-1126 FOLSOM STREET
Office/Retail/Flex - SOMA District



MAYA ISMAIEL | Sales & Leasing Associate
maya@starboardnet.com
650.619.6787 | DRE 02042011

HANS HANSSON | Principal
hans@starboardnet.com
415.765.6897 | BRE 00872902





MAYA ISMAIEL | Sales & Leasing Associate
maya@starboardnet.com
650.619.6787 | DRE 02042011

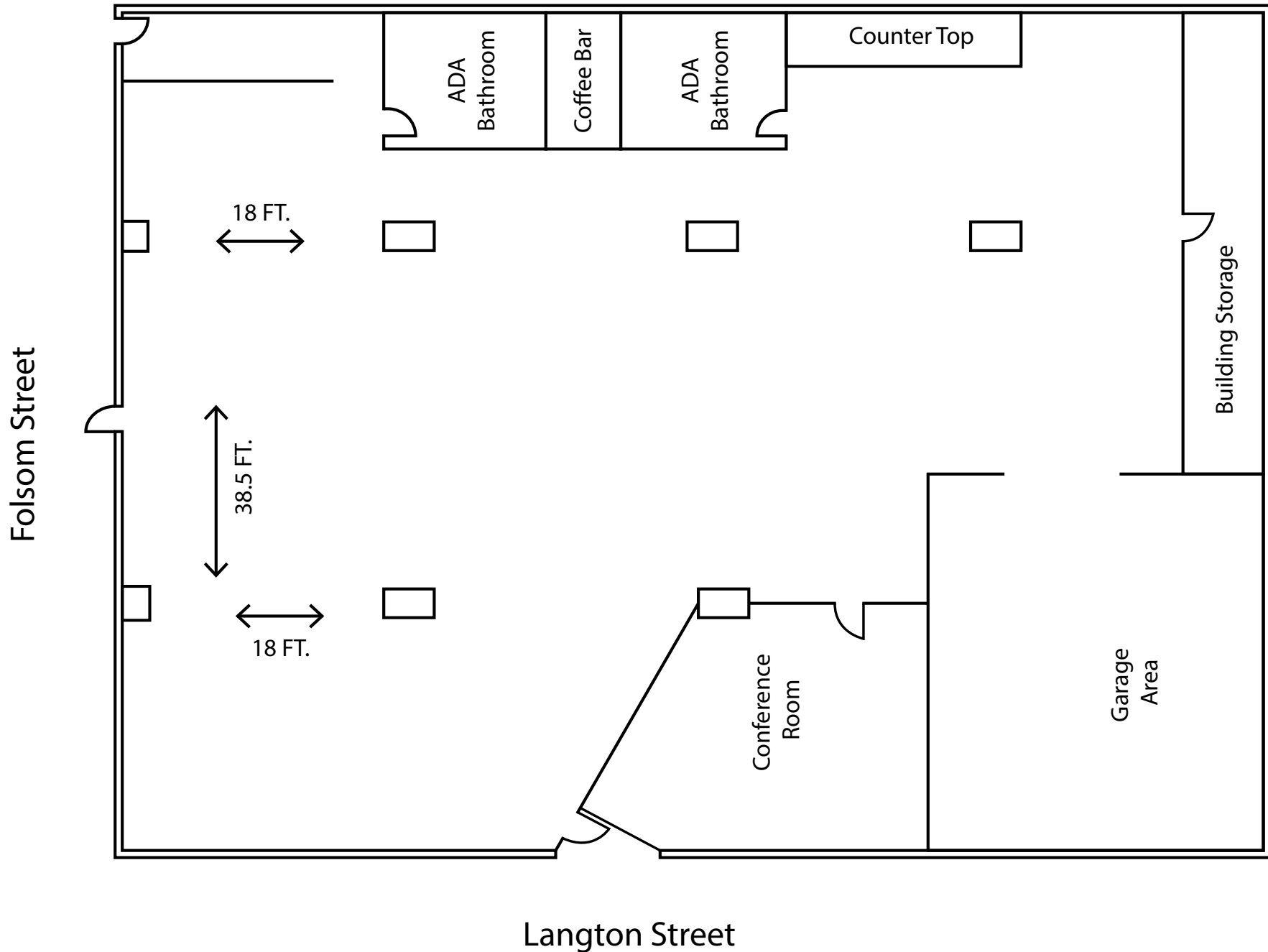
HANS HANSSON | Principal
hans@starboardnet.com
415.765.6897 | BRE 00872902



FLOOR PLAN

1122-1126 FOLSOM STREET

Office/Retail/Flex - SOMA District



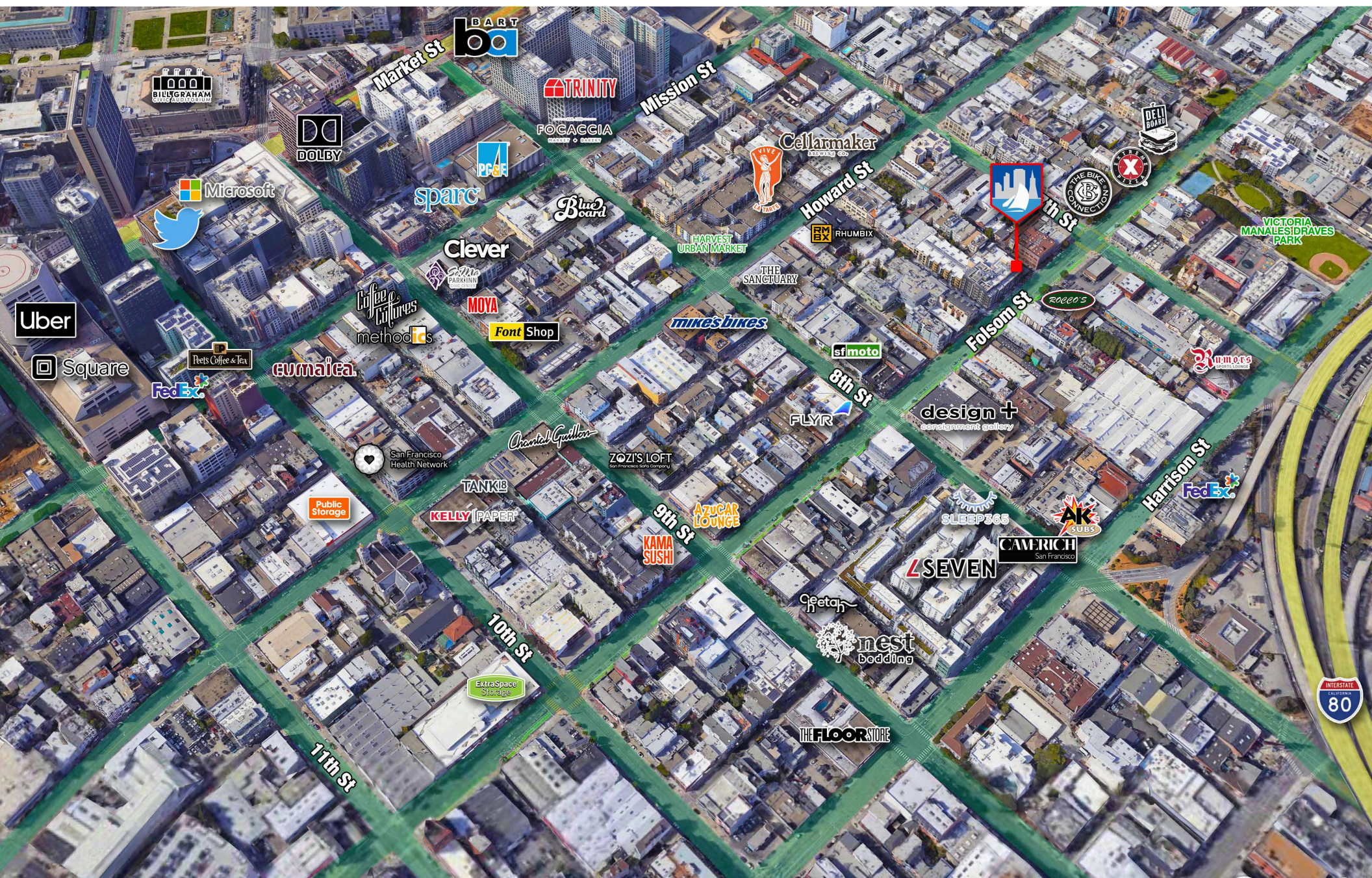
MAYA ISMAIEL | Sales & Leasing Associate
maya@starboardnet.com
650.619.6787 | DRE 02042011

HANS HANSSON | Principal
hans@starboardnet.com
415.765.6897 | BRE 00872902



NEIGHBORHOOD

1122 FOLSOM STREET
Office/Retail/Flex - SOMA District



MAYA ISMAIEL | Sales & Leasing Associate
maya@starboardnet.com
650.619.6787 | DRE 02042011

HANS HANSSON | Principal
hans@starboardnet.com
415.765.6897 | BRE 00872902

STARBOARD
COMMERCIAL REAL ESTATE
ENTREPRENEURIAL • LOCAL • INDEPENDENT

TCN
WORLDWIDE
REAL ESTATE SERVICES