

SUBLEASE

155 SANSOME STREET

SAN FRANCISCO, CA 94104



MARK MEIER | Sales & Leasing Associate

E: mark@starboardnet.com

C: 415.299.7042 | BRE #02047169

HANS HANSSON | Principal

E: hans@starboardnet.com

C: 415.517.2589 | BRE #00872902



ENTREPRENEURIAL • LOCAL • INDEPENDENT



155 Sansome Street, San Francisco CA 94104

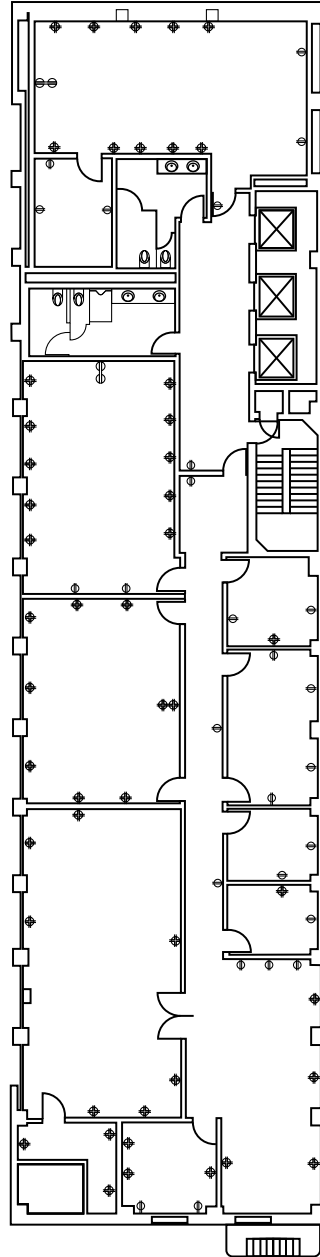
Square Ft.	6,000
Rate:	\$63 PSF/ Year
Type:	Modified Gross
Term:	4 Years
Floor / Suite #:	Second Floor

Building Description

- » Centrally located office in the historic Stock Exchange Tower
- » Close proximity to Montgomery BART and MUNI
- » An abundance of great restaurants and cafes within walking distance
- » Dramatic Art Deco lobby with 25' ceilings

Space Description

- » Newly renovated space with video and photography studio capabilities
- » 4 small private offices
- » 4 large rooms
- » 2 private restrooms
- » Spacious high ceilings
- » Modern and fresh layout perfect for a coding school, start-up, or production company

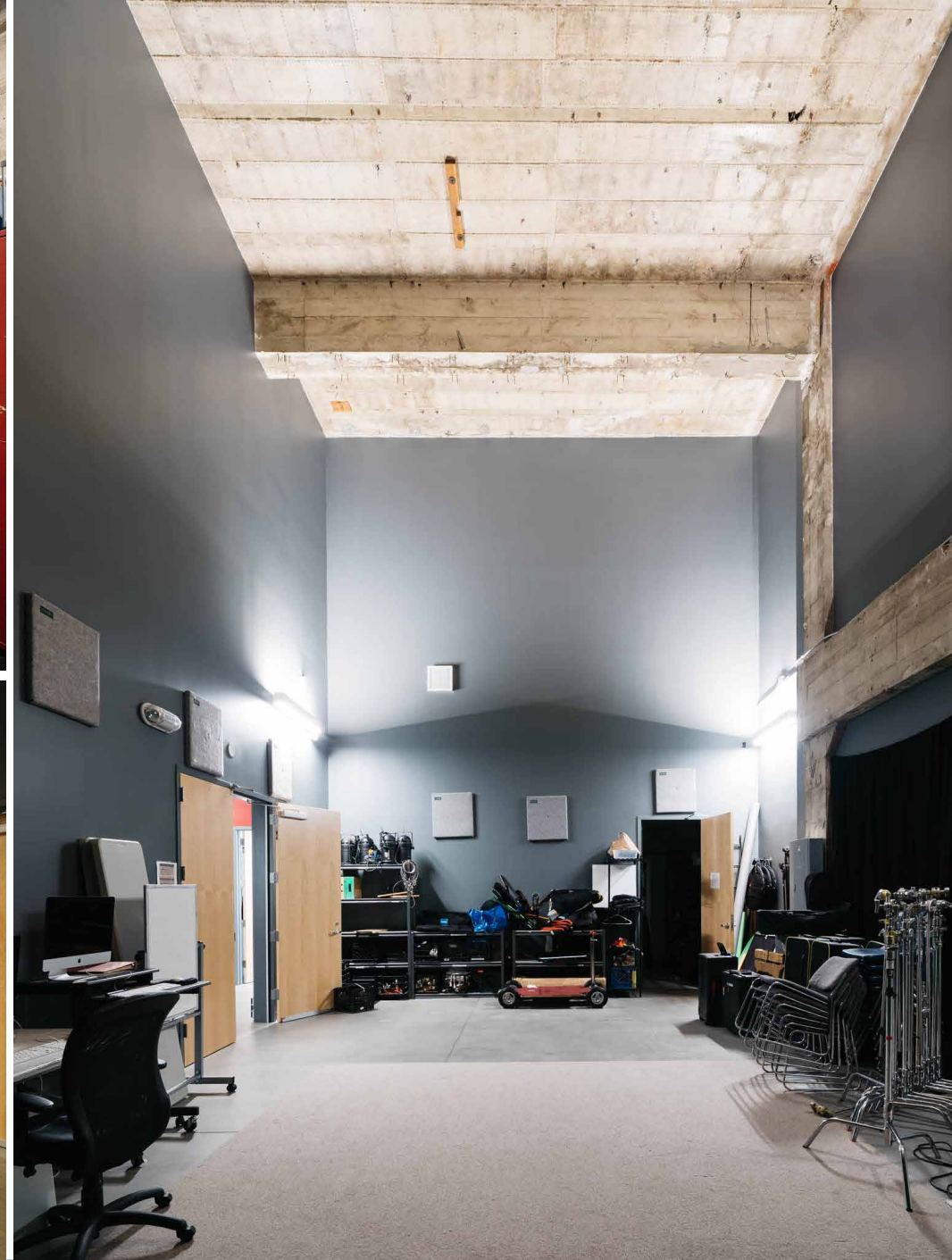
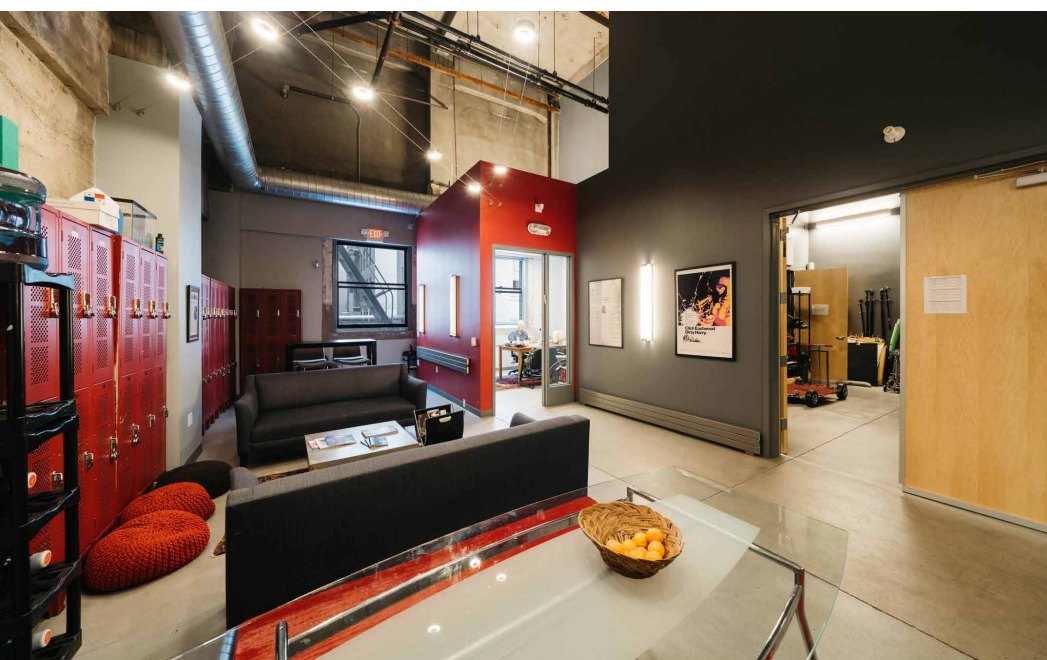


MARK MEIER | Sales & Leasing Associate
E: mark@starboardnet.com
C: 415.299.7042 | BRE #02047169

HANS HANSSON | Principal
E: hans@starboardnet.com
C: 415.517.2589 | BRE #00872902

STARBOARD
COMMERCIAL REAL ESTATE
ENTREPRENEURIAL • LOCAL • INDEPENDENT

TCN
WORLDWIDE
REAL ESTATE SERVICES

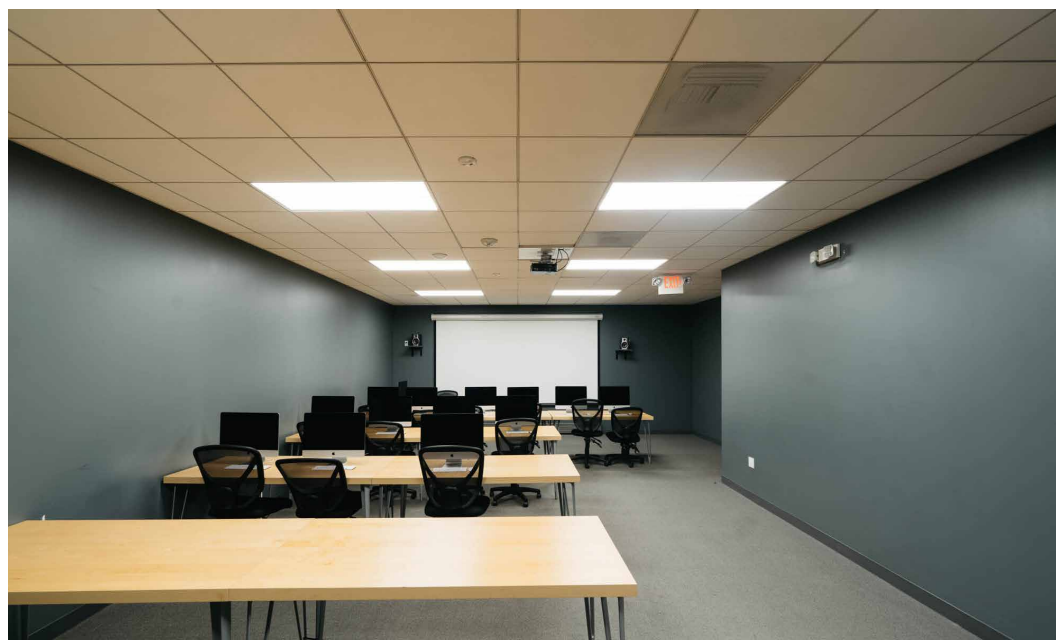
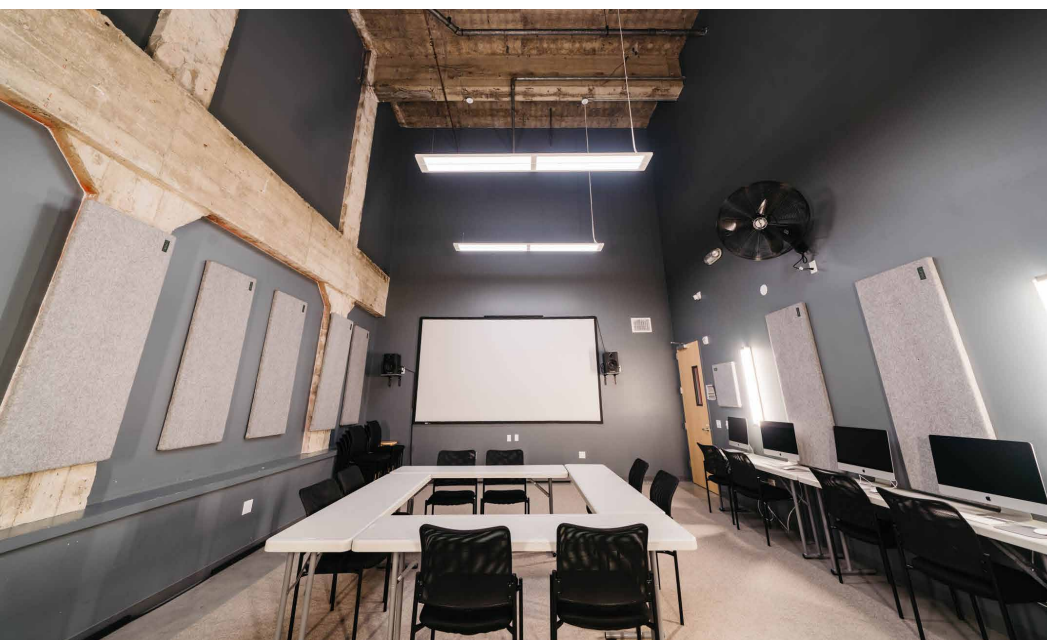
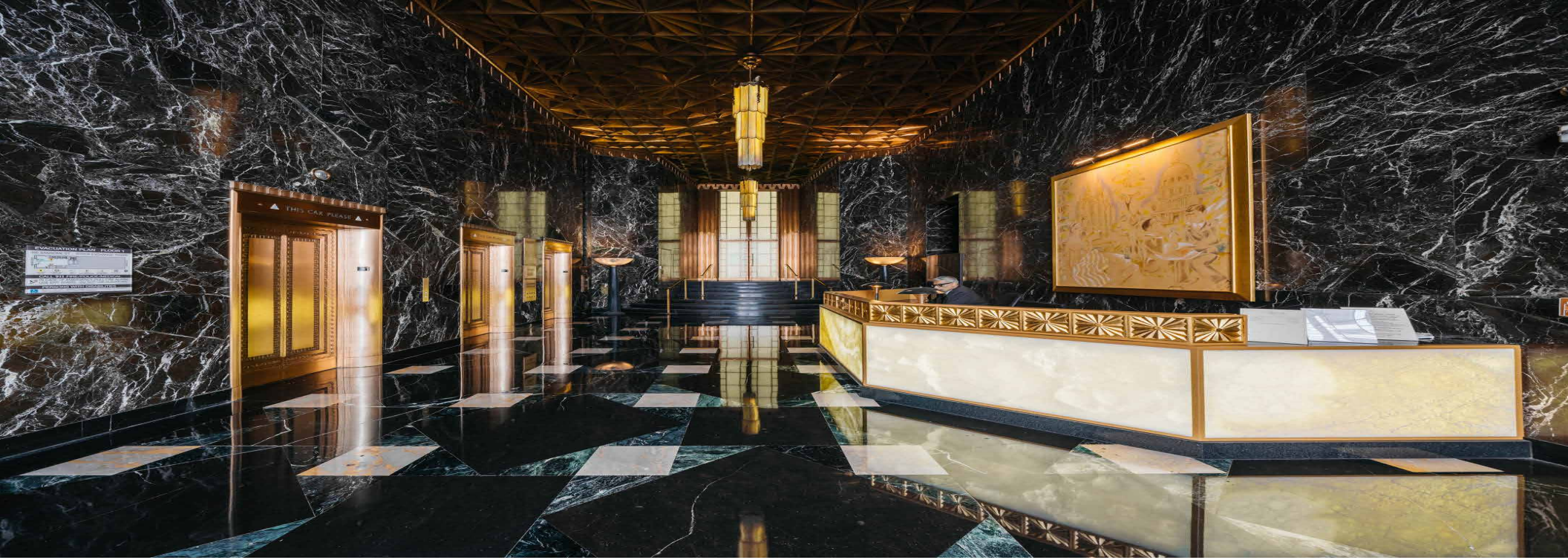


MARK MEIER | Sales & Leasing Associate
E: mark@starboardnet.com
C: 415.299.7042 | BRE #02047169

HANS HANSSON | Principal
E: hans@starboardnet.com
C: 415.517.2589 | BRE #00872902

STARBOARD
COMMERCIAL REAL ESTATE
ENTREPRENEURIAL • LOCAL • INDEPENDENT

TCN
WORLDWIDE
REAL ESTATE SERVICES

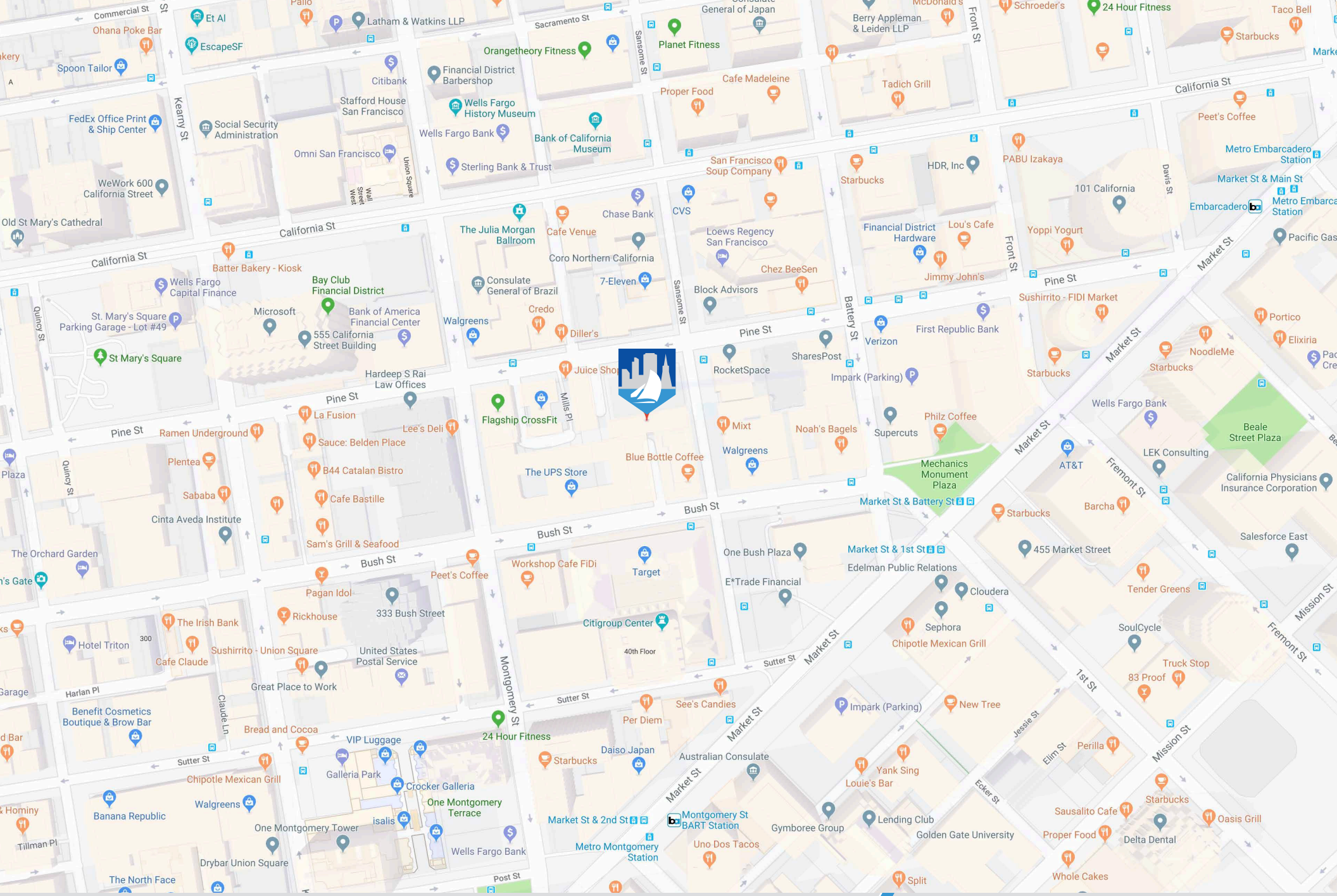


MARK MEIER | Sales & Leasing Associate
E: mark@starboardnet.com
C: 415.299.7042 | BRE #02047169

HANS HANSSON | Principal
E: hans@starboardnet.com
C: 415.517.2589 | BRE #00872902

 **STARBOARD**
COMMERCIAL REAL ESTATE
ENTREPRENEURIAL • LOCAL • INDEPENDENT

 **TCN**
WORLDWIDE
REAL ESTATE SERVICES



MARK MEIER | Sales & Leasing Associate

E: mark@starboardnet.com

C: 415.299.7042 | BRE #02047169

HANS HANSSON | Principal

E: hans@starboardnet.com

C: 415.517.2589 | BRE #00872902



ENTREPRENEURIAL • LOCAL • INDEPENDENT

