

1122 FOLSOM STREET

OFFICE/RETAIL SPACE FOR LEASE



MAYA ISMAIEL | Sales & Leasing Associate
maya@starboardnet.com
650.619.6787 | DRE 02042011



1122 FOLSOM ST., SAN FRANCISCO, CA 94103

FLOOR / SUITE: GROUND FLOOR

RENTABLE SQUARE FEET: ± 4,000

PRICE: \$36PSF/YEAR

TERM: NEGOTIABLE

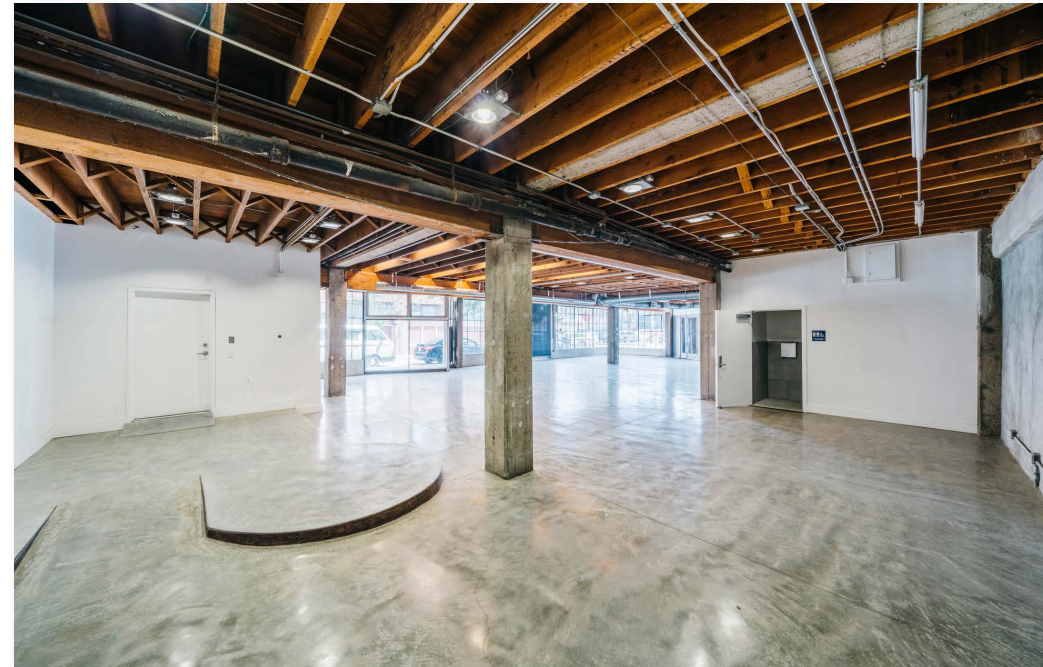
ZONING: NCT

BUILDING DESCRIPTION

Ground floor of this two-story building (formerly Brainwash) includes a permitted public parklet. The property is located in the South of Market district of San Francisco, only three blocks from the Civic Center Bart Station and one block from the I-80 Freeway. This allows for an easy commute and walkability to nearby coffee shops, restaurants, and Market Street retail.

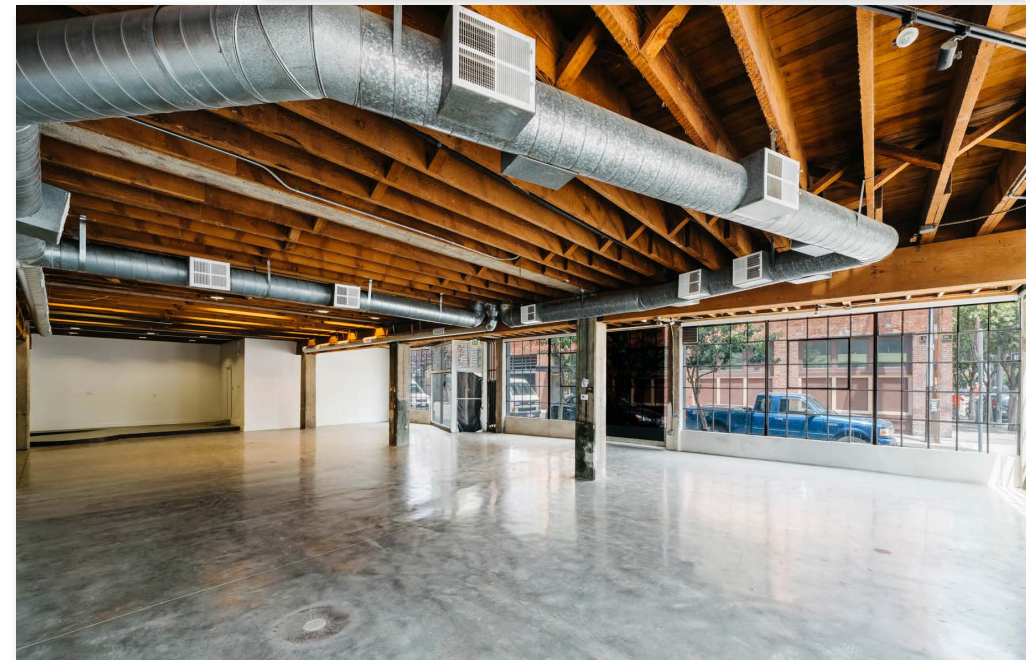
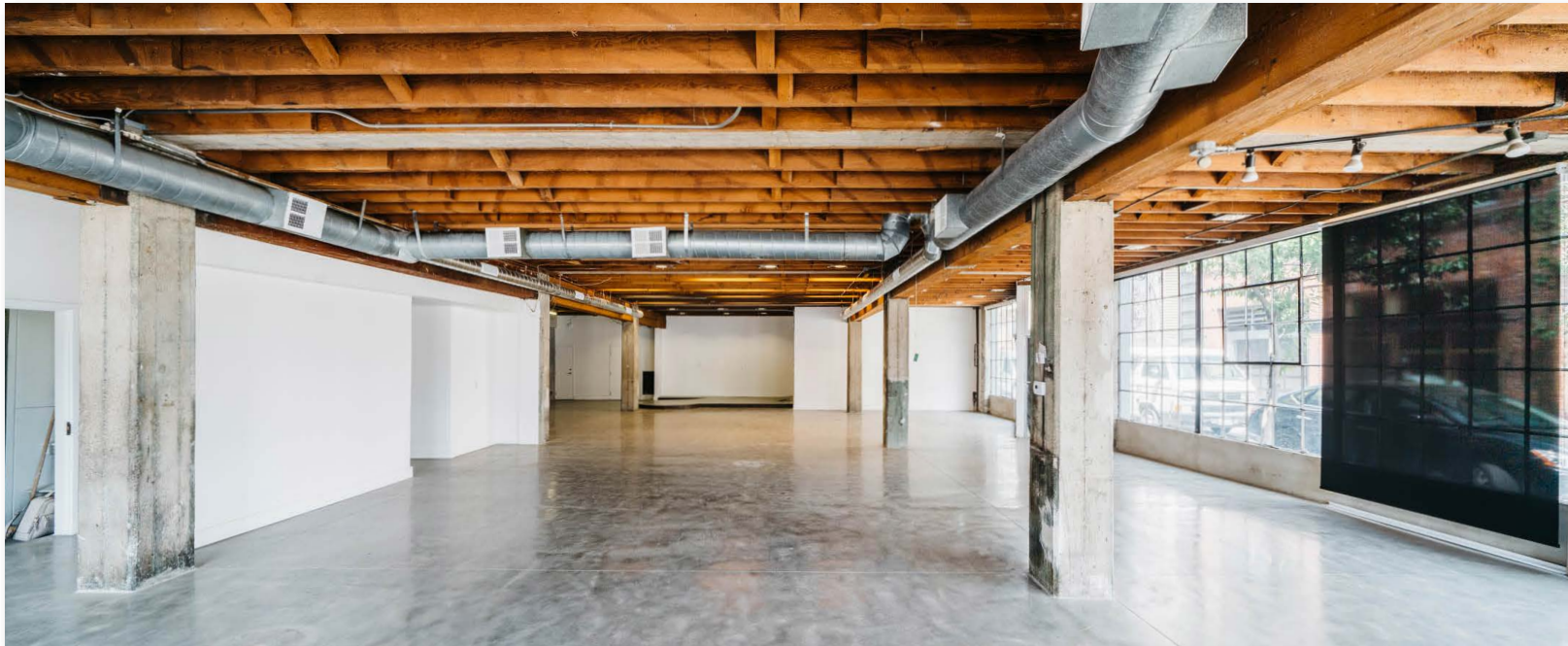
PROPERTY HIGHLIGHTS

- ± 4,000 SF
- End-Cap Building
- Large Windows for 180-Degree View
- Open Floor Plan
- On Site Parking
- Permitted Outdoor Parklet
- Drive-In Access on Langton St.
- Electronic Roll-Up Garage Door
- Brand New HVAC System
- Two ADA Compliant Restrooms
- Kitchen, Coffee Bar, Conference Room (Under Construction)



GROUND FLOOR

1122 FOLSOM STREET
Office/Retail/Flex - SOMA District

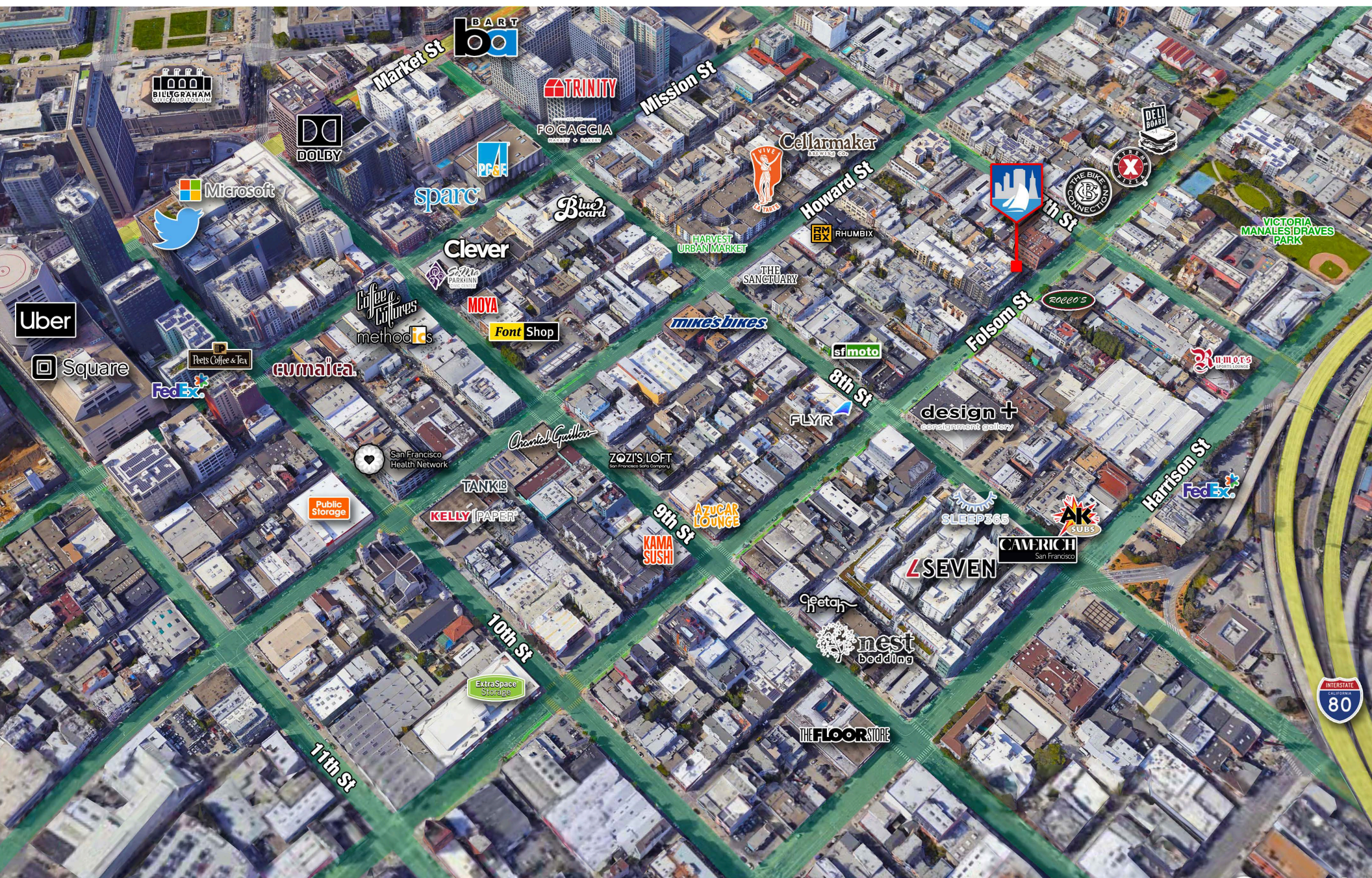


MAYA ISMAIEL | Sales & Leasing Associate
maya@starboardnet.com
650.619.6787 | DRE 02042011



NEIGHBORHOOD

1122 FOLSOM STREET
Office/Retail/Flex - SOMA District



MAYA ISMAIEL | Sales & Leasing Associate
maya@starboardnet.com
650.619.6787 | DRE 02042011

STARBOARD
COMMERCIAL REAL ESTATE
ENTREPRENEURIAL • LOCAL • INDEPENDENT

TCN
WORLDWIDE
REAL ESTATE SERVICES

1122 FOLSOM STREET

OFFICE/RETAIL SPACE FOR LEASE



MAYA ISMAIEL | Sales & Leasing Associate
maya@starboardnet.com
650.619.6787 | DRE 02042011

