

For Sublease

235 Montgomery Street

The Russ Building - Prime Financial District Location

SUITE # 760

RATE:	\$46 per SF/Year*
TYPE:	Full Service
TERM:	June 30th, 2023

***Reduced Rent**
for year one
\$46.00 per SF.

Bonus Commission:
\$3.00 per SF/Year
of the lease.

- Private Office Intensive Spaces
- Five Small Size Offices
- Nine Medium Size Offices
- Two Large Offices (6 Person Desks)
- One Large Conference Room (8 Person Seating)
- One Large Assembly Room (21 Person or More)
- Great Natural Light Operable Windows
- Kitchen Area
- Extension to Sublease Possible



235 Montgomery Street is also known as The Russ Building. The building in its Noe-Gothic design is 32 floors, as well as the city's first indoor parking garage at the completion of construction, in 1927. From 1927 to 1964 it was considered one of the tallest buildings in San Francisco. The terra cotta tile and brick building is a National Historic Landmark.



**VIEW
VIRTUAL
TOUR**

FOR MORE INFORMATION, PLEASE CONTACT:

Craig Hansson
M. 415-710-7768
E. craig@starboardnet.com
BRE #: 01841643

Hans Hansson
M. 415-517-2589
E. hans@starboardnet.com
BRE #: 00872902

Antonio Gamero
M. 415-684-8670
E. antonio@starboardnet.com
BRE #: 01938112



For Sublease

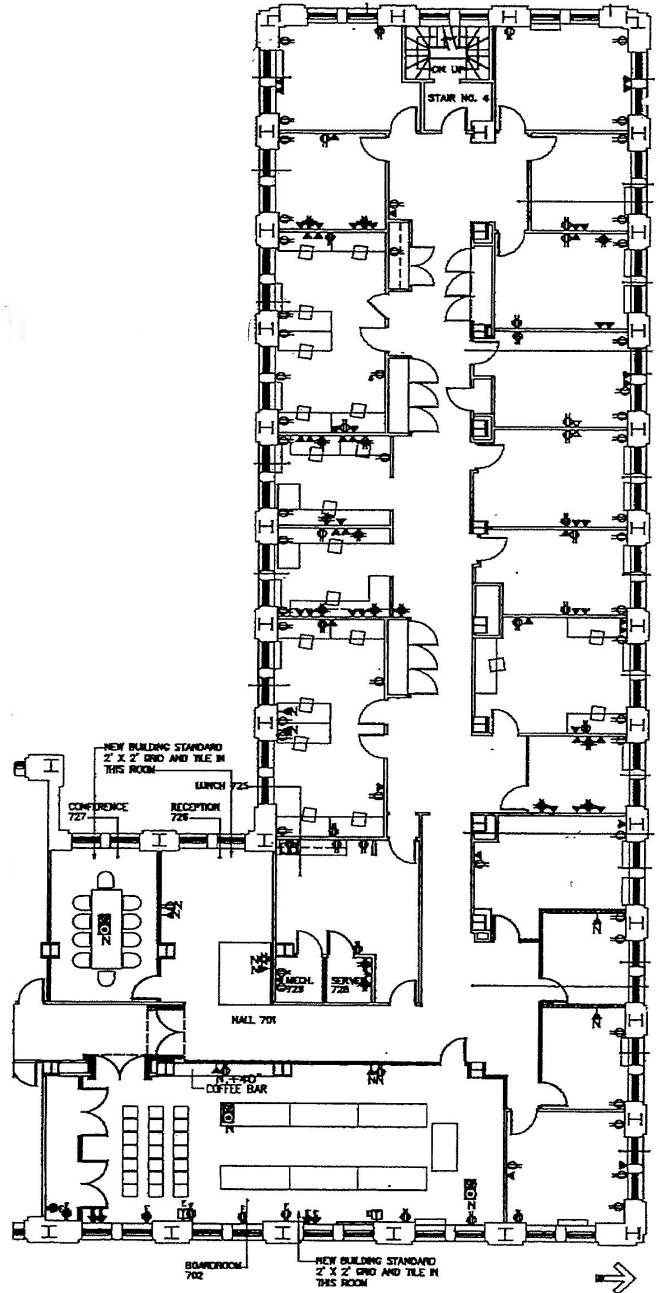
235 Montgomery Street

The Russ Building - Prime Financial District Location



VIEW
VIRTUAL
TOUR

FLOOR PLAN



FOR MORE INFORMATION, PLEASE CONTACT:

Craig Hansson
M. 415-710-7768
E. craig@starboardnet.com
BRE #: 01841643

Hans Hansson
M. 415-517-2589
E. hans@starboardnet.com
BRE #: 00872902

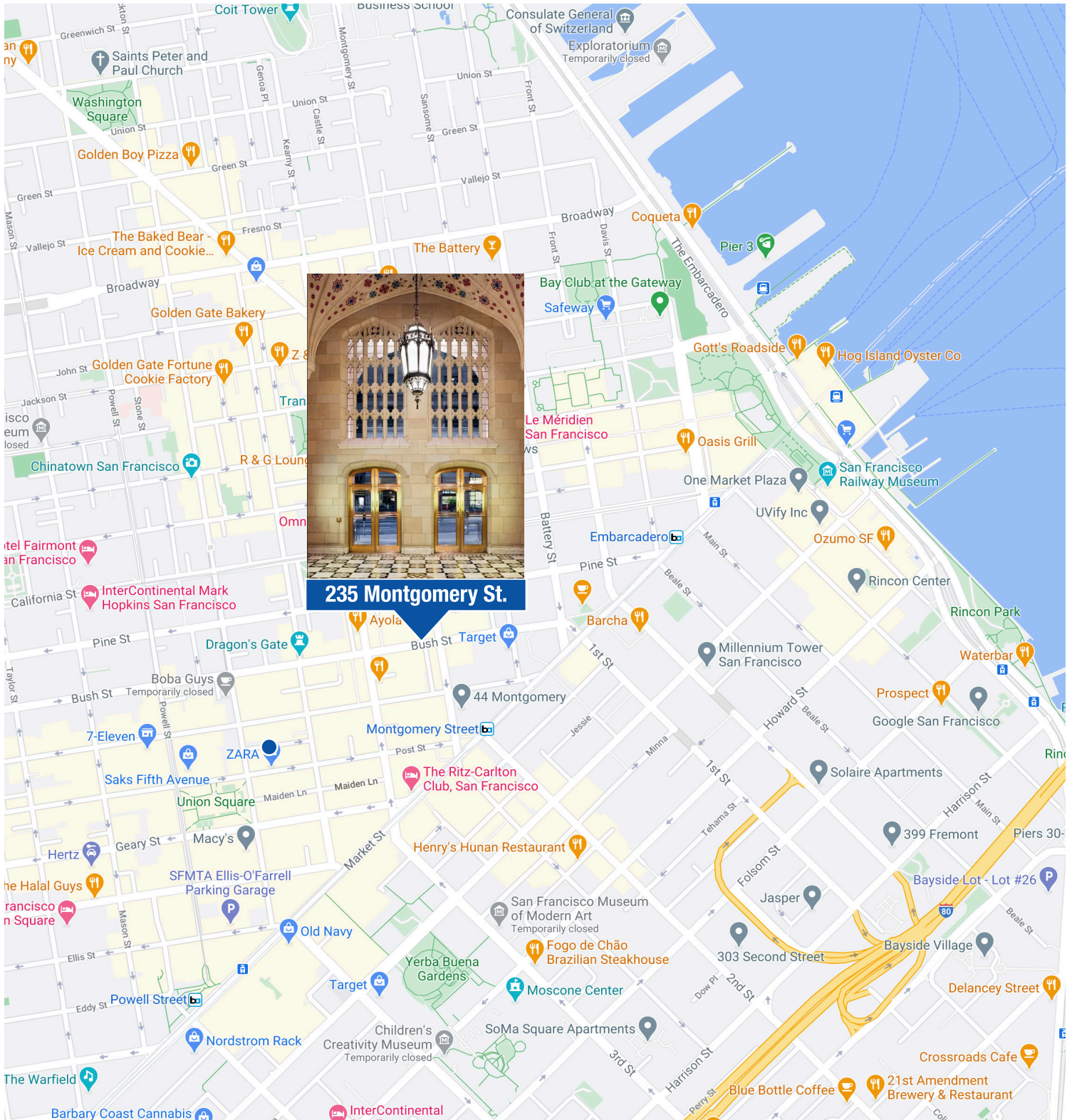
Antonio Gamero
M. 415-684-8670
E. antonio@starboardnet.com
BRE #: 01938112



For Sublease

235 Montgomery Street

The Russ Building - Prime Financial District Location



FOR MORE INFORMATION, PLEASE CONTACT:

Craig Hansson
M. 415-710-7768
E. craig@starboardnet.com
BRE #: 01841643

Hans Hansson
M. 415-517-2589
E. hans@starboardnet.com
BRE #: 00872902

Antonio Gamero
M. 415-684-8670
E. antonio@starboardnet.com
BRE #: 01938112

