

FOR LEASE

2nd Floor Walk-Up Office Space
± 2,800 RSF

1311 SUTTER STREET

San Francisco, CA



Space includes:

- 3 private offices
- Open area & conference rooms
- Kitchenette

Details:

Total Square Feet:

± 2,800 Rentable Sq.Ft
± 2,563 Usable Sq.Ft

Rate:

\$24/RSF/Year/ Full Service

Term:

Flexible

Type:

Full Service

FOR MORE INFORMATION, PLEASE CONTACT:

DORON BARUTH | C: 415.385.7933 | E: doron@starboardnet.com

CA BRE #00584810

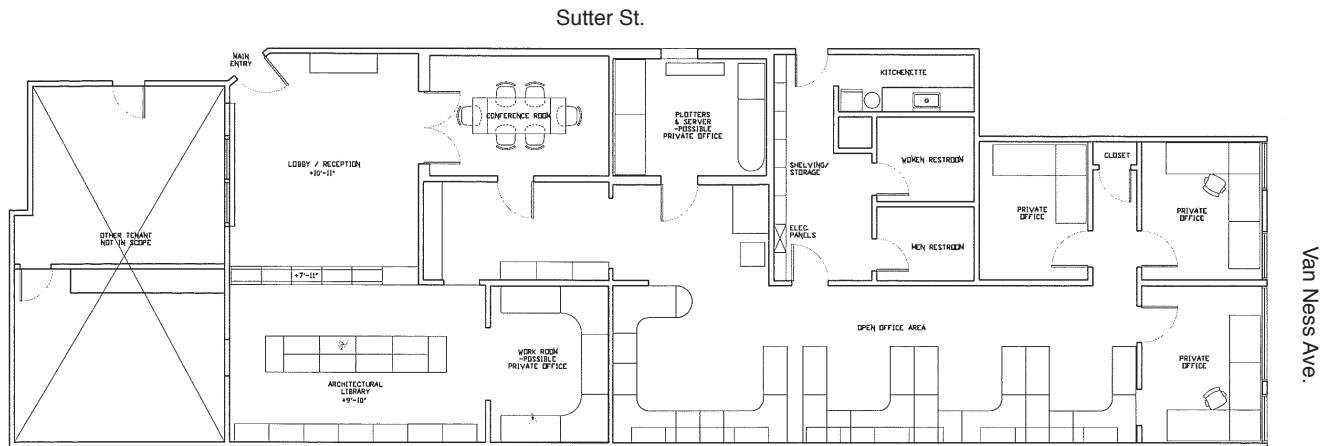


FOR LEASE

2nd Floor Walk-Up Office Space ± 2,800 RSF

*Floorplan per previous Architect tenant

Existing Floor Plan 2,563 Total Sqft.



FOR MORE INFORMATION, PLEASE CONTACT:

DORON BARUTH | C: 415.385.7933 | E: doron@starboardnet.com
CA BRE #00584810

