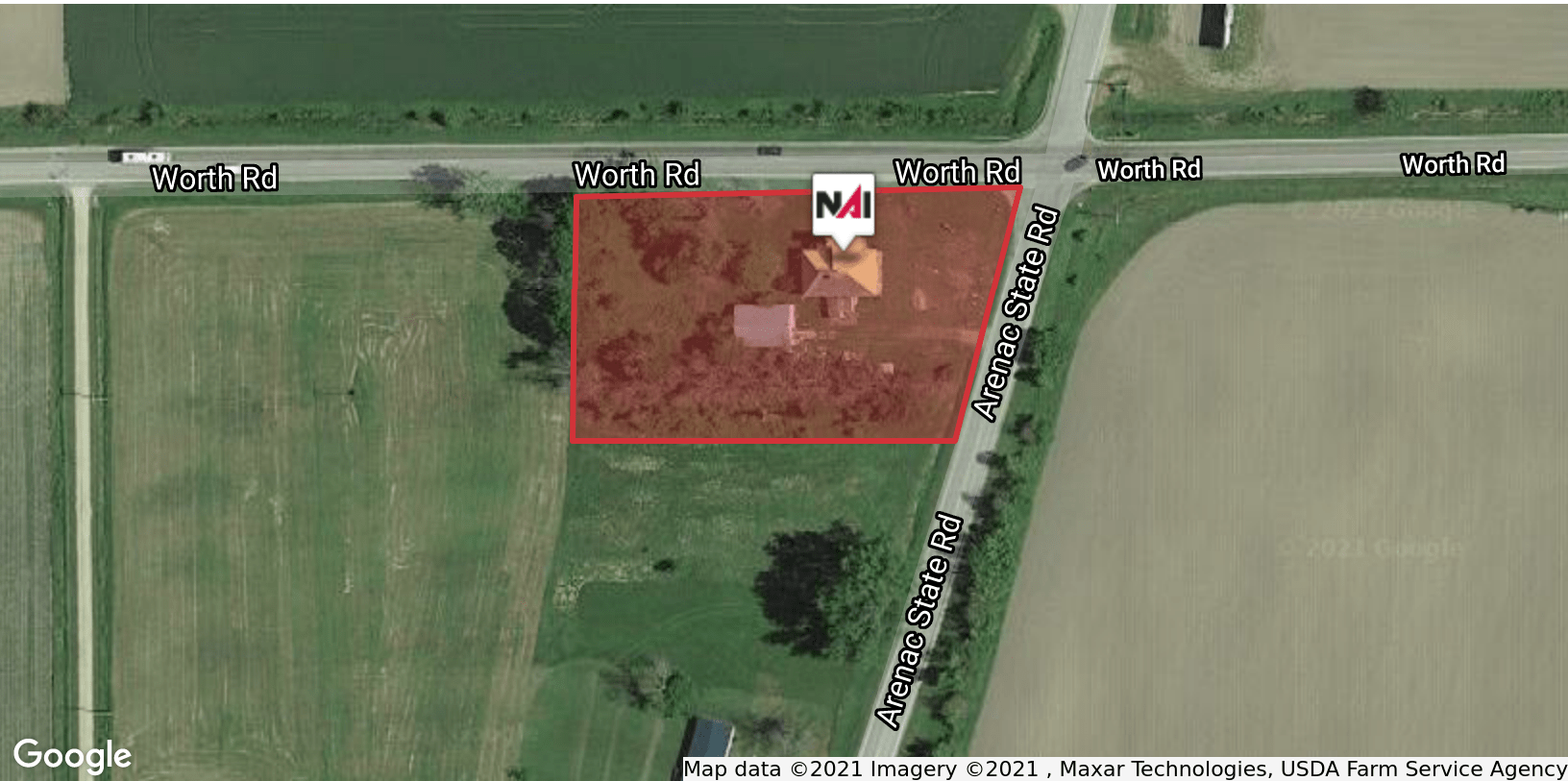


# 1 ACRE RETAIL/OFFICE LAND



## FOR SALE

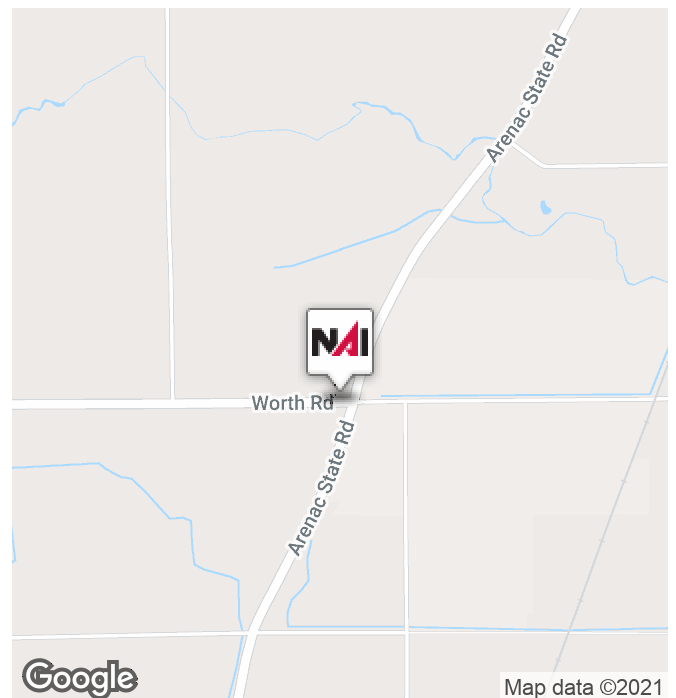


## 3071 Worth Road

Standish, Michigan 48658

### Property Highlights

- Nearby Saganing Eagles Landing Casino
- Located in an Opportunity Zone
- Excellent Visibility
- Hard Corner of Worth and Arenac State Road
- Commercial Zoning
- 1 AC (2,156 SF Building)



**NAI Farbman**

Commercial Real Estate Services, Worldwide.

[www.naifarbman.com](http://www.naifarbman.com)

**Daniel McCleary**

Associate Broker | 248.351.4384  
[mccleary@farbman.com](mailto:mccleary@farbman.com)

**Erik Lawshe**

Sales Associate | 248.351.6333  
[lawshe@farbman.com](mailto:lawshe@farbman.com)

**Nathan Casey**

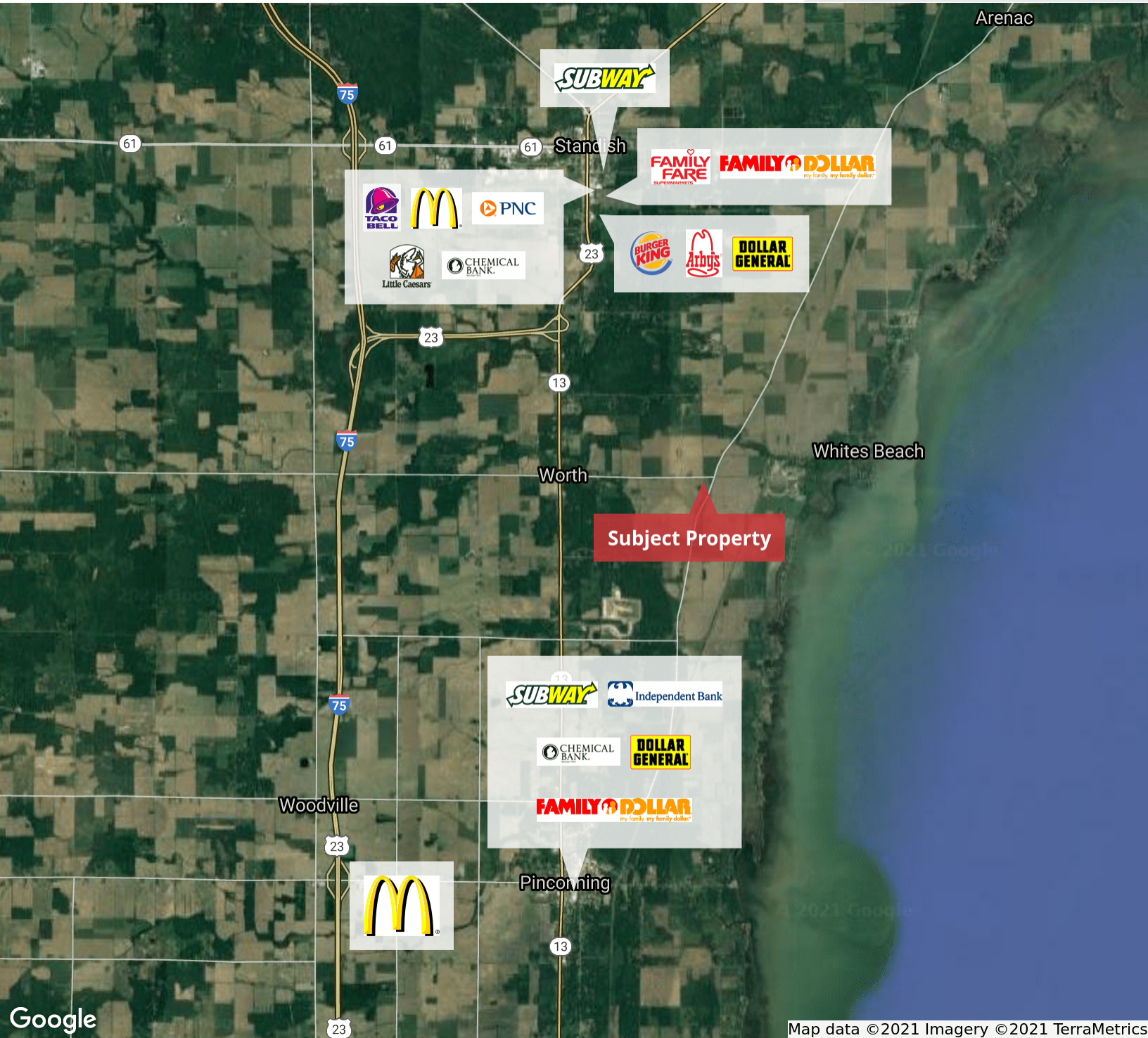
Leasing and Sales Associate | 248.351.4391  
[casey@farbman.com](mailto:casey@farbman.com)

NO WARRANTY, EXPRESS OR IMPLIED, IS MADE AS TO THE ACCURACY OF THE INFORMATION CONTAINED HEREIN. THIS INFORMATION IS SUBMITTED SUBJECT TO ERRORS, OMISSIONS, CHANGE OF PRICE, RENTAL OR OTHER CONDITIONS, WITHDRAWAL WITHOUT NOTICE, AND IS SUBJECT TO ANY SPECIAL LISTING CONDITIONS IMPOSED BY OUR PRINCIPALS. COOPERATING BROKERS, BUYERS, TENANTS AND OTHER PARTIES WHO RECEIVE THIS DOCUMENT SHOULD NOT RELY ON IT, BUT SHOULD USE IT AS A STARTING POINT OF ANALYSIS, AND SHOULD INDEPENDENTLY CONFIRM THE ACCURACY OF THE INFORMATION CONTAINED HEREIN THROUGH A DUE DILIGENCE REVIEW OF THE BOOKS, RECORDS, FILES AND DOCUMENTS THAT CONSTITUTE RELIABLE SOURCES OF THE INFORMATION DESCRIBED HEREIN. LOGOS ARE FOR IDENTIFICATION PURPOSES ONLY AND MAY BE TRADEMARKS OF THEIR RESPECTIVE COMPANIES. NAI CAPITAL, INC. CA BRE LIC. #01990696.

# 1 ACRE RETAIL/OFFICE LAND



## FOR SALE



Google

Map data © 2021 Imagery © 2021 TerraMetrics



Commercial Real Estate Services, Worldwide.  
www.naifarbman.com

**Daniel McCleary**  
Associate Broker | 248.351.4384  
mccleary@farbman.com

**Erik Lawshe**  
Sales Associate | 248.351.6333  
lawshe@farbman.com

**Nathan Casey**  
Leasing and Sales Associate | 248.351.4391  
casey@farbman.com

NO WARRANTY, EXPRESS OR IMPLIED, IS MADE AS TO THE ACCURACY OF THE INFORMATION CONTAINED HEREIN. THIS INFORMATION IS SUBMITTED SUBJECT TO ERRORS, OMISSIONS, CHANGE OF PRICE, RENTAL OR OTHER CONDITIONS, WITHDRAWAL WITHOUT NOTICE, AND IS SUBJECT TO ANY SPECIAL LISTING CONDITIONS IMPOSED BY OUR PRINCIPALS. COOPERATING BROKERS, BUYERS, TENANTS AND OTHER PARTIES WHO RECEIVE THIS DOCUMENT SHOULD NOT RELY ON IT, BUT SHOULD USE IT AS A STARTING POINT OF ANALYSIS, AND SHOULD INDEPENDENTLY CONFIRM THE ACCURACY OF THE INFORMATION CONTAINED HEREIN THROUGH A DUE DILIGENCE REVIEW OF THE BOOKS, RECORDS, FILES AND DOCUMENTS THAT CONSTITUTE RELIABLE SOURCES OF THE INFORMATION DESCRIBED HEREIN. LOGOS ARE FOR IDENTIFICATION PURPOSES ONLY AND MAY BE TRADEMARKS OF THEIR RESPECTIVE COMPANIES. NAI CAPITAL, INC. CA BRE LIC. #01990696.