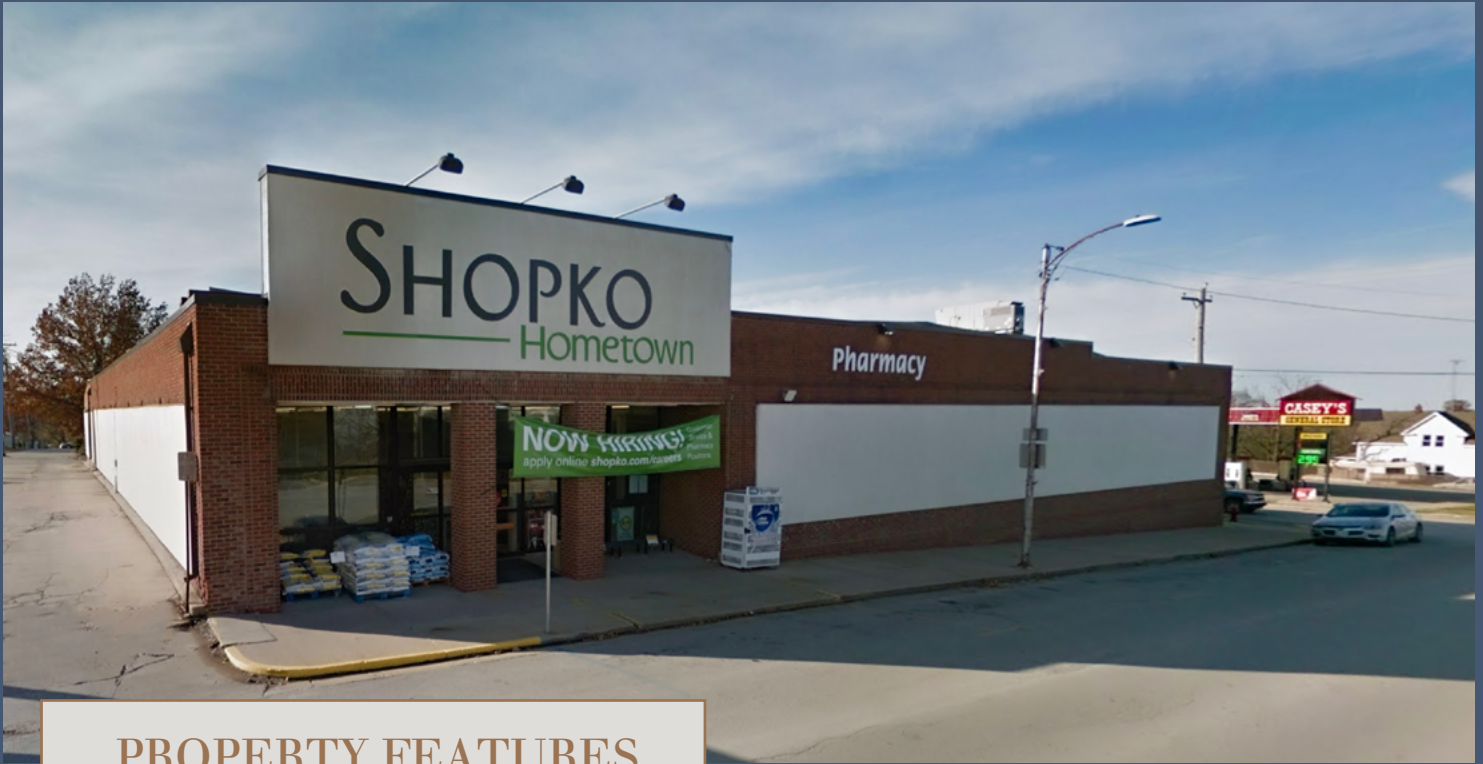


212 N MAIN ST
GALLATIN, MISSOURI

SANSONE
group

FOR SALE/LEASE: 0.6 Acres and 17,741 SF Available



PROPERTY FEATURES

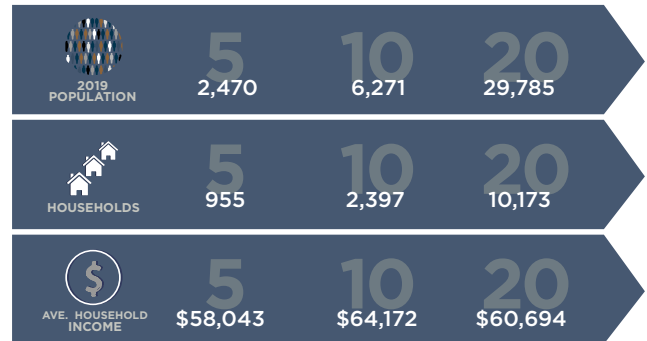
- 17,741 SF Free Standing, Former Department Store on Main Street
- In the heart of Gallatin's downtown district
- 16 parking spaces
- Nearby retailers include Subway, Casey's General Store, Dungy's Market and Dollar General
- Gallatin is located 1 hour northeast of Kansas City
- Traffic Count:
3,180 VPD on N. Main St.



SWC MAIN STREET & BERRY
212 N Main St. • Gallatin, MO 64640

AREA DEMOGRAPHICS

—RADIUS IN MILES—



FOR MORE INFORMATION PLEASE CONTACT:

Tim Cherre, CRX,CLS
tcherre@sansonegroup.com

Tim McFarland
tmcfarland@sansonegroup.com



314-727-6664

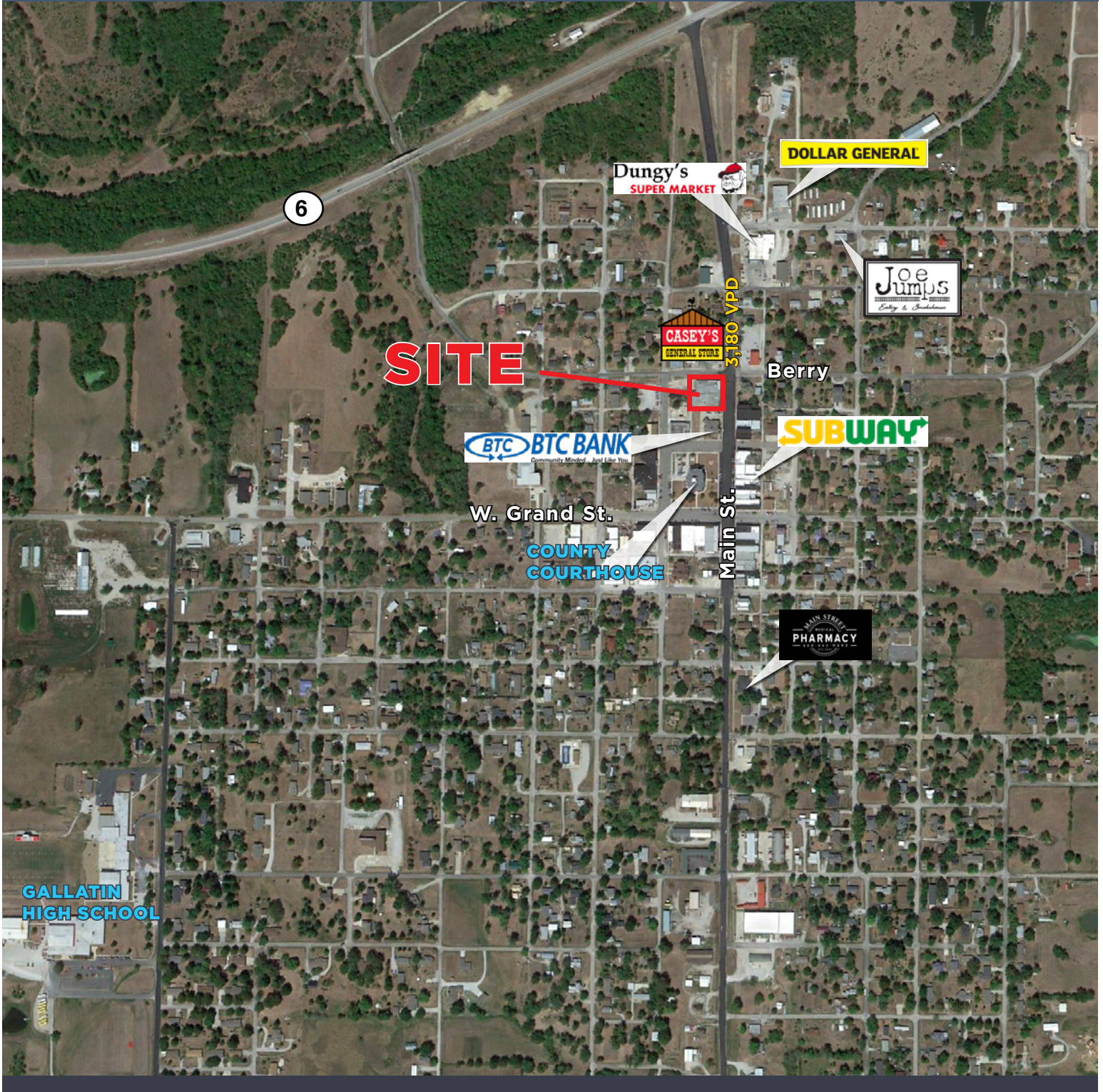


www.sansonegroup.com



120 S. Central, Suite 500
St. Louis, Missouri 63105

212 N MAIN ST. • GALLATIN, MO



FOR MORE INFORMATION:

Tim Cherre, CRX, CLS
tcherre@sansonegroup.com

Tim McFarland
tmcfarland@sansonegroup.com



120 S. Central, Suite 500
St. Louis, Missouri 63105

314-727-6664



The information contained herein is not warranted, although it has been obtained from the owner of the property or from other sources that we deem reliable. It is subject to change without notice. Seller and broker make no representation as to the environmental condition of the property and recommend purchaser's independent investigation.