



**PREMIER**  
COMMERCIAL  
PROPERTIES



# For Lease

601 County Rd 10, Blaine, MN 55434

## PROPERTY DETAILS

- \* Highly visible retail corner, signalized intersection
- \* County Rd 10 in Blaine (Jefferson St NE & Co Rd 10) - 19,100 vehicles per day (MNDOT 2018)
- \* Perfect location for medical or office - Join Cricket, Dentist, Allstate Insurance and Chiropractor
- \* Zoning B-2 - Community Commercial District
- \* Across from Northtown Shopping Center
- \* Suite 200 - 1,224sf - Reception, open area and privates



## **PROPERTY DETAILS**

**LEASE RATE: \$14.00 GROSS**

### **FOR MORE INFORMATION, CONTACT**

Marty Fisher/Mike Fisher  
763.862.2005  
mfisher@premiercommercialproperties.com  
mikefisher@premiercommercialproperties.com



**PREMIER**  
COMMERCIAL  
PROPERTIES

# For Lease

601 County Rd 10 NE | Blaine, MN | 55434

**FOR MORE INFORMATION, CONTACT:**

Marty Fisher | 763.862.2005 | [mfisher@premiercommercialproperties.com](mailto:mfisher@premiercommercialproperties.com)

**Suite 200 - 1,224rsf**

**3 privates - open**

**area - reception**







**PREMIER**  
COMMERCIAL  
PROPERTIES

# For Lease

601 County Rd 10 NE | Blaine, MN | 55434

FOR MORE INFORMATION, CONTACT:

Marty Fisher | 763.862.2005 | [mfisher@premiercommercialproperties.com](mailto:mfisher@premiercommercialproperties.com)



## DEMOGRAPHICS (2020)

1 mile

3 miles

5 miles

Total Population

7,466

69,611

209,725

Total Households

3,062

27,049

79,566

Average Household Income

\$76,547

\$82,824

\$90,523



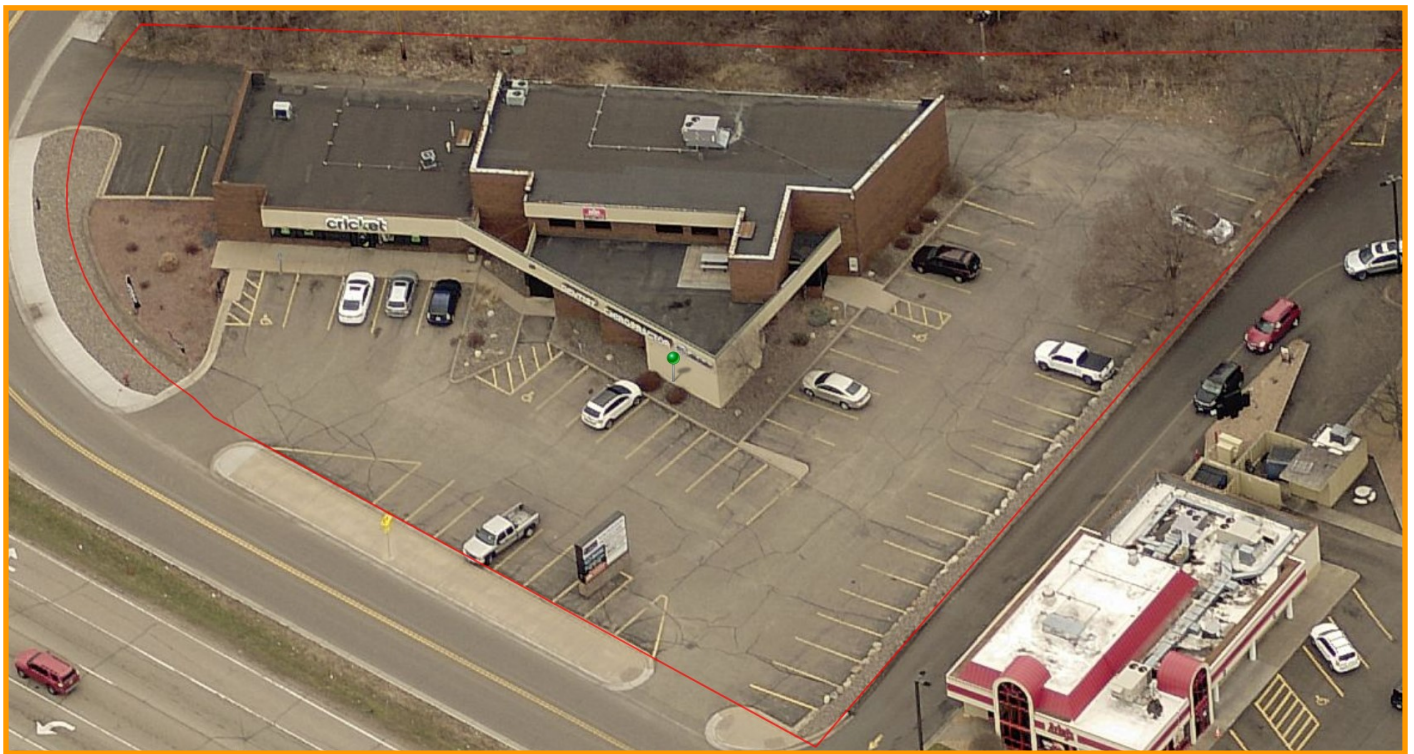
**PREMIER**  
COMMERCIAL  
PROPERTIES

# For Lease

601 County Rd 10 NE | Blaine, MN | 55434

**FOR MORE INFORMATION, CONTACT:**

Marty Fisher | 763.862.2005 | [mfisher@premiercommercialproperties.com](mailto:mfisher@premiercommercialproperties.com)







**PREMIER**  
COMMERCIAL  
PROPERTIES

# For Lease

601 County Rd 10 NE | Blaine, MN | 55434

FOR MORE INFORMATION, CONTACT:

Marty Fisher | 763.862.2005 | [mfisher@premiercommercialproperties.com](mailto:mfisher@premiercommercialproperties.com)

