

FOR LEASE

OFFICE/RETAIL SPACE

SANSONE

group

3,205 SF Available



PW SHOE LOFTS // 3427 LOCUST ST • St. Louis, MO 63103

PROPERTY FEATURES

- 3,205 SF office/retail space available
- Building contains 34,712 Residential SF and 7,834 Commercial SF
- Conveniently located in vibrant Midtown Neighborhood
- Adjacent to SLU's campus
- Easy access to Highway 40
- Many nearby amenities and food options including: Fieldhouse Pub, Vito's, Pappy's Smokehouse, Urban Chestnut, & Center Ice Brewery

Area Demographics



1 mile	15,670	6,041	\$41,666
3 miles	141,985	65,200	\$69,889
5 miles	306,175	134,971	\$67,243



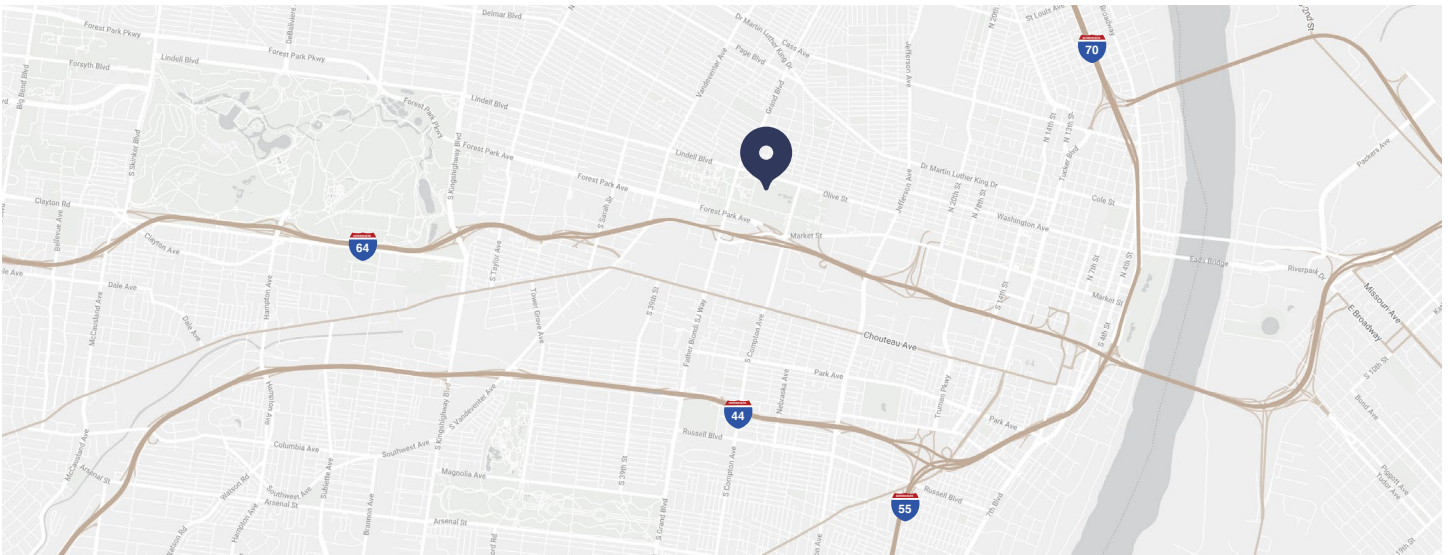
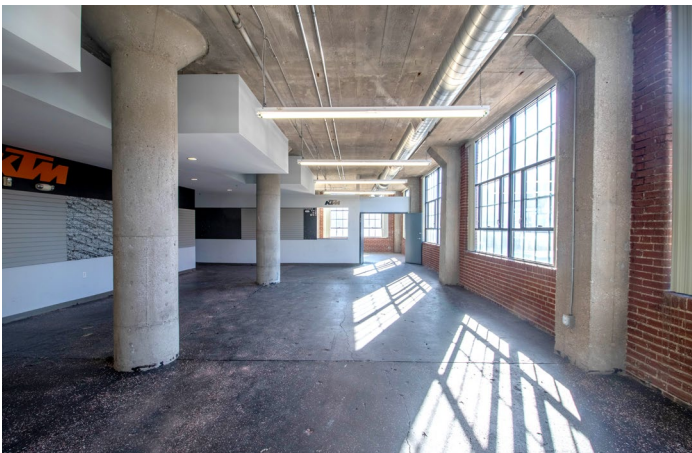
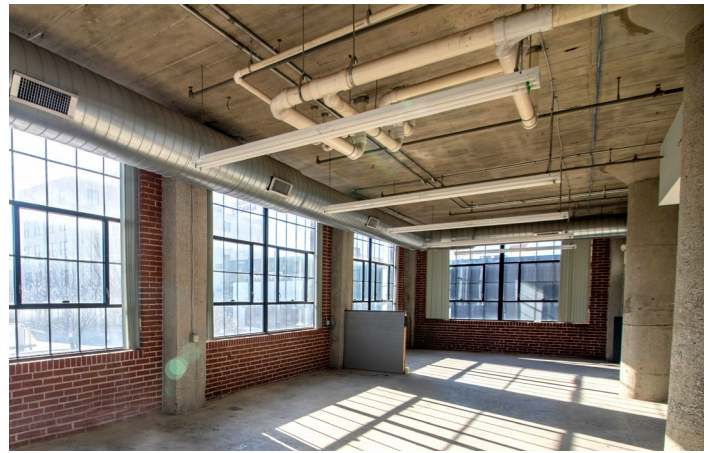
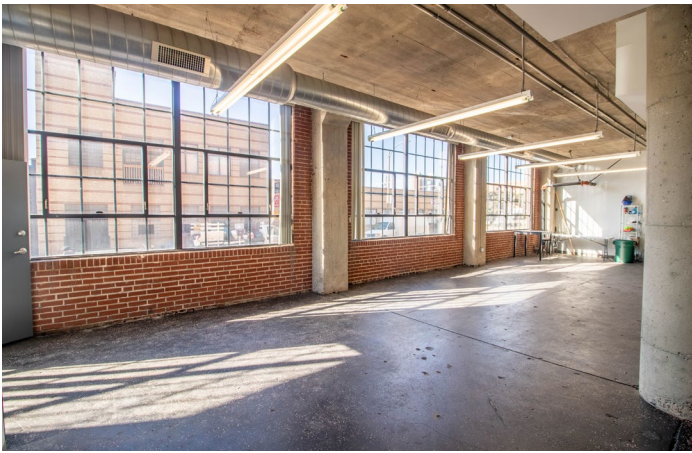
314-727-6664



www.sansonegroup.com



120 S. Central, Suite 500
St. Louis, Missouri 63105



For more information, contact:

Tim McFarland
tmcfarland@sansonegroup.com

Nick Fiquette
nfiquette@sansonegroup.com

SANSONE
group

314-727-6664
www.sansonegroup.com



The information contained herein is not warranted, although it has been obtained from the owner of the property or from other sources that we deem reliable. It is subject to change without notice. Seller and broker make no representation as to the environmental condition of the property and recommend purchaser's independent investigation.