



PREMIER
COMMERCIAL
PROPERTIES



For Lease

1100 McKinley St., Anoka, MN 55303

PROPERTY FEATURES:

- ◆ 28,000 SF INDUSTRIAL SPACE
 - ◆ 6,000 SF OFFICE
 - ◆ 22,000 SF WAREHOUSE
- ◆ HEAVY POWER: 1,600 AMPS / 480 VOLT
- ◆ 24' CLEAR HEIGHT
- ◆ DOCK / DRIVE IN LOADING
- ◆ M-1, LIGHT INDUSTRIAL ZONING

LEASE RATES:

\$5.00 / PSF WAREHOUSE NNN

\$10.00 / PSF OFFICE NNN



PROPERTY DETAILS:

INDUSTRIAL FOR LEASE

CAM/TAX: \$2.88 PSF (2021)

FOR MORE INFORMATION, CONTACT

Rich Lee / Bradee Thompson

763.862.2005

richlee@premiercommercialproperties.com

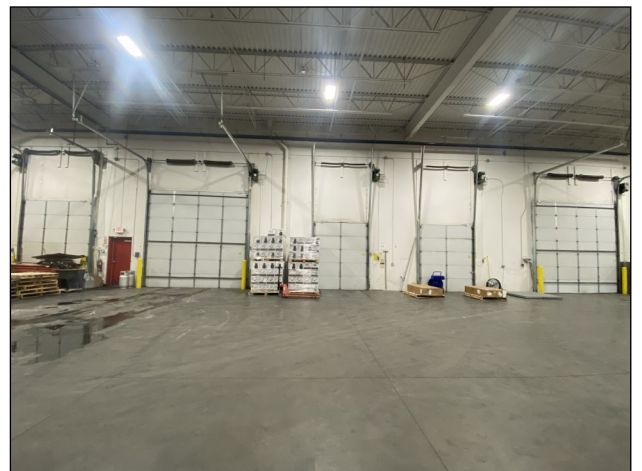
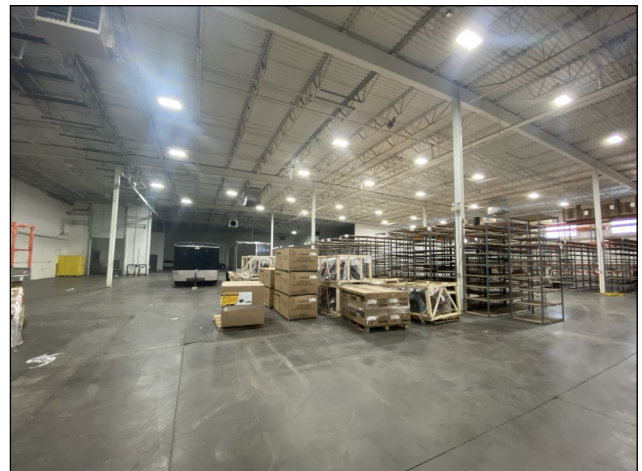
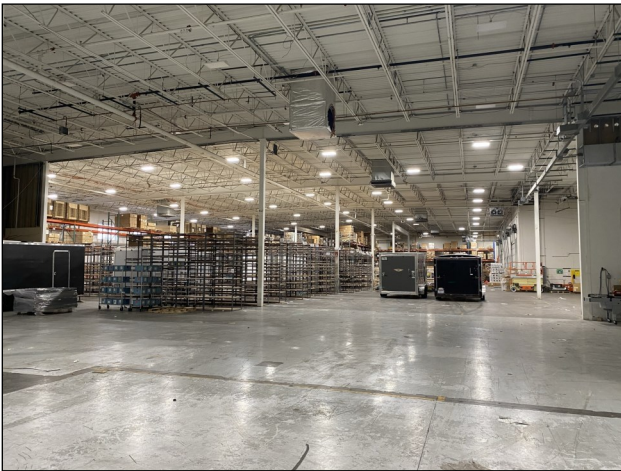


PREMIER
COMMERCIAL
PROPERTIES

Industrial

1100 McKinley St. | Anoka, MN 55303

28,000 Square Feet



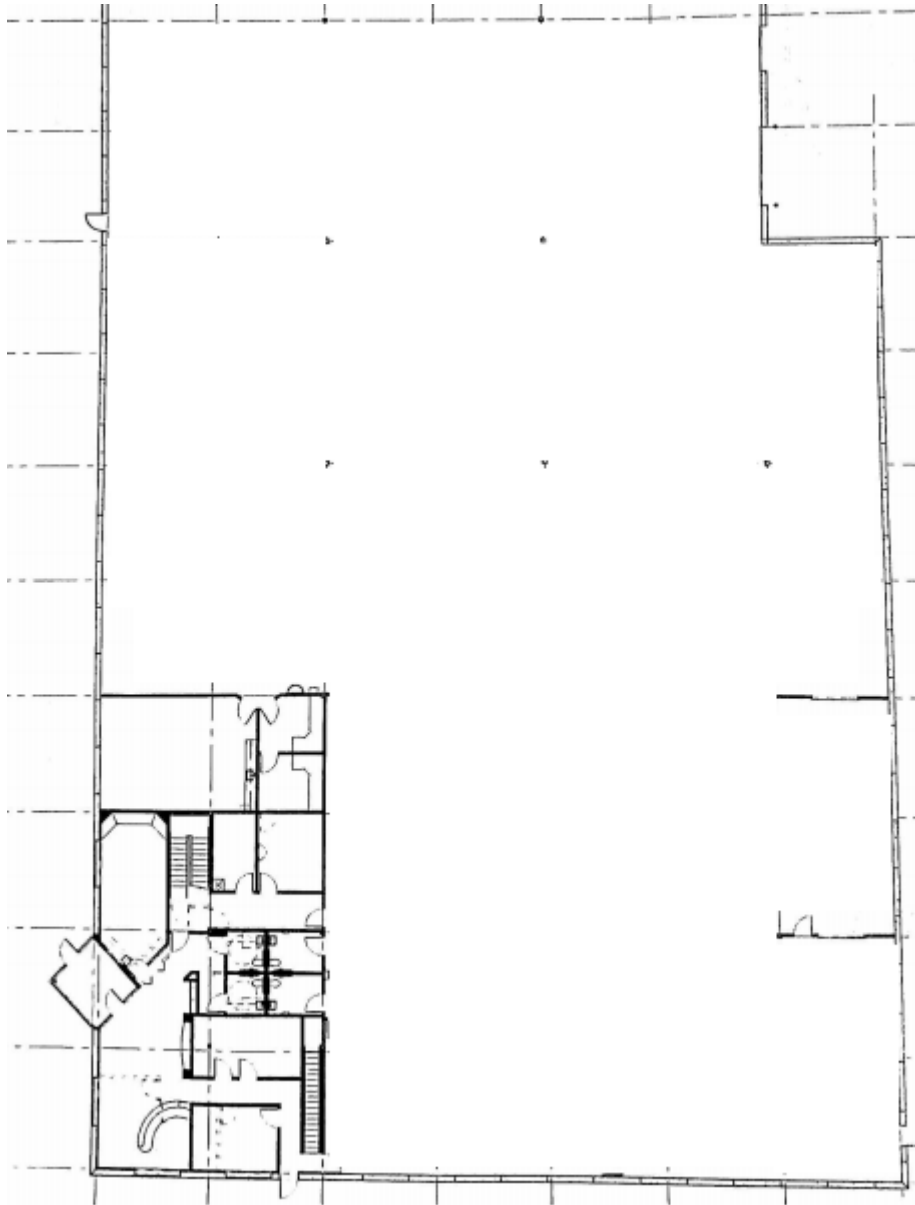


PREMIER
COMMERCIAL
PROPERTIES

Industrial

1100 McKinley St. | Anoka, MN 55303

28,000 Square Feet





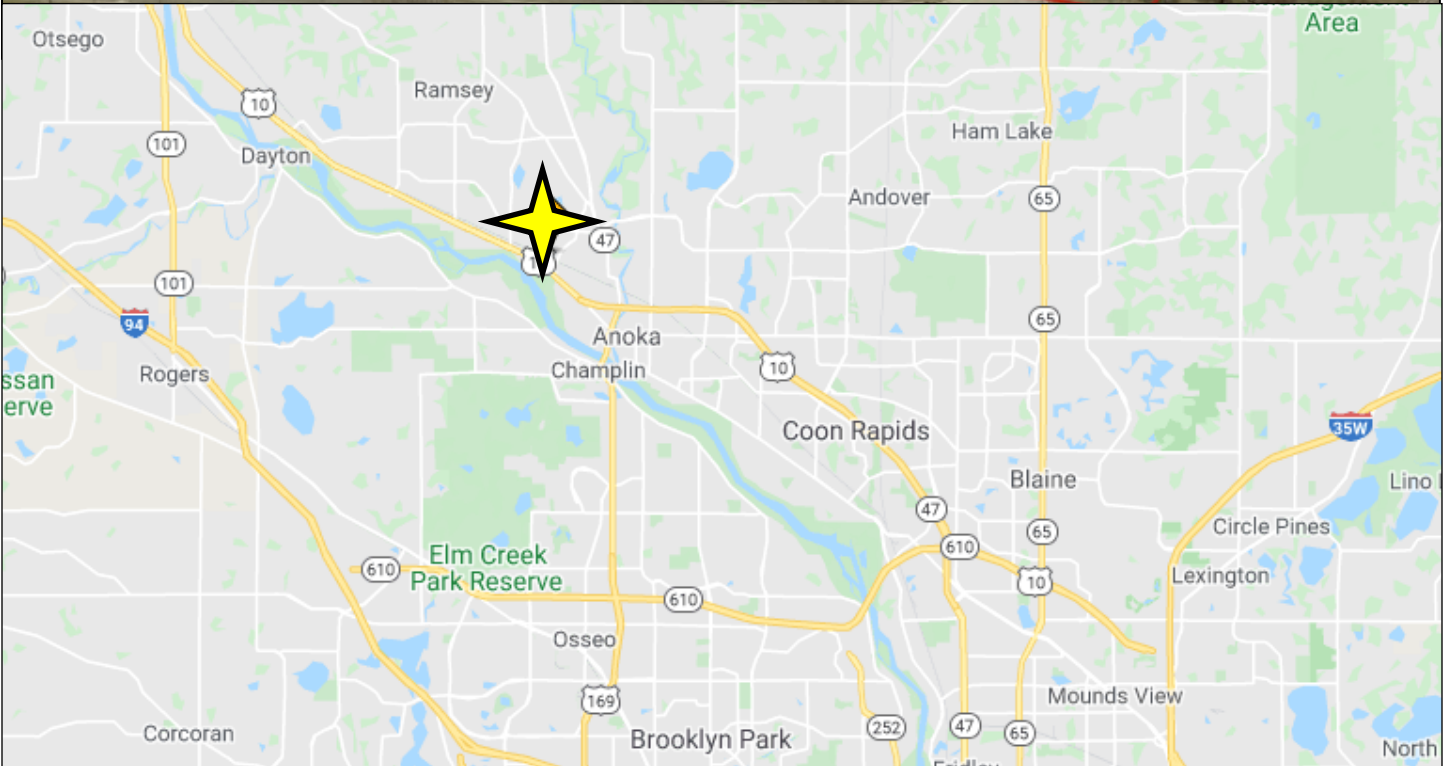
PREMIER
COMMERCIAL
PROPERTIES

Industrial

1100 McKinley St. | Anoka, MN 55303

FOR MORE INFORMATION, CONTACT

Rich Lee / Bradee Thompson | 763.862.2005 | richlee@premiercommercialproperties.com



299 Coon Rapids Blvd. | Coon Rapids, MN 55433 | premiercommercialproperties.com