

320-328 S Kirkwood Rd

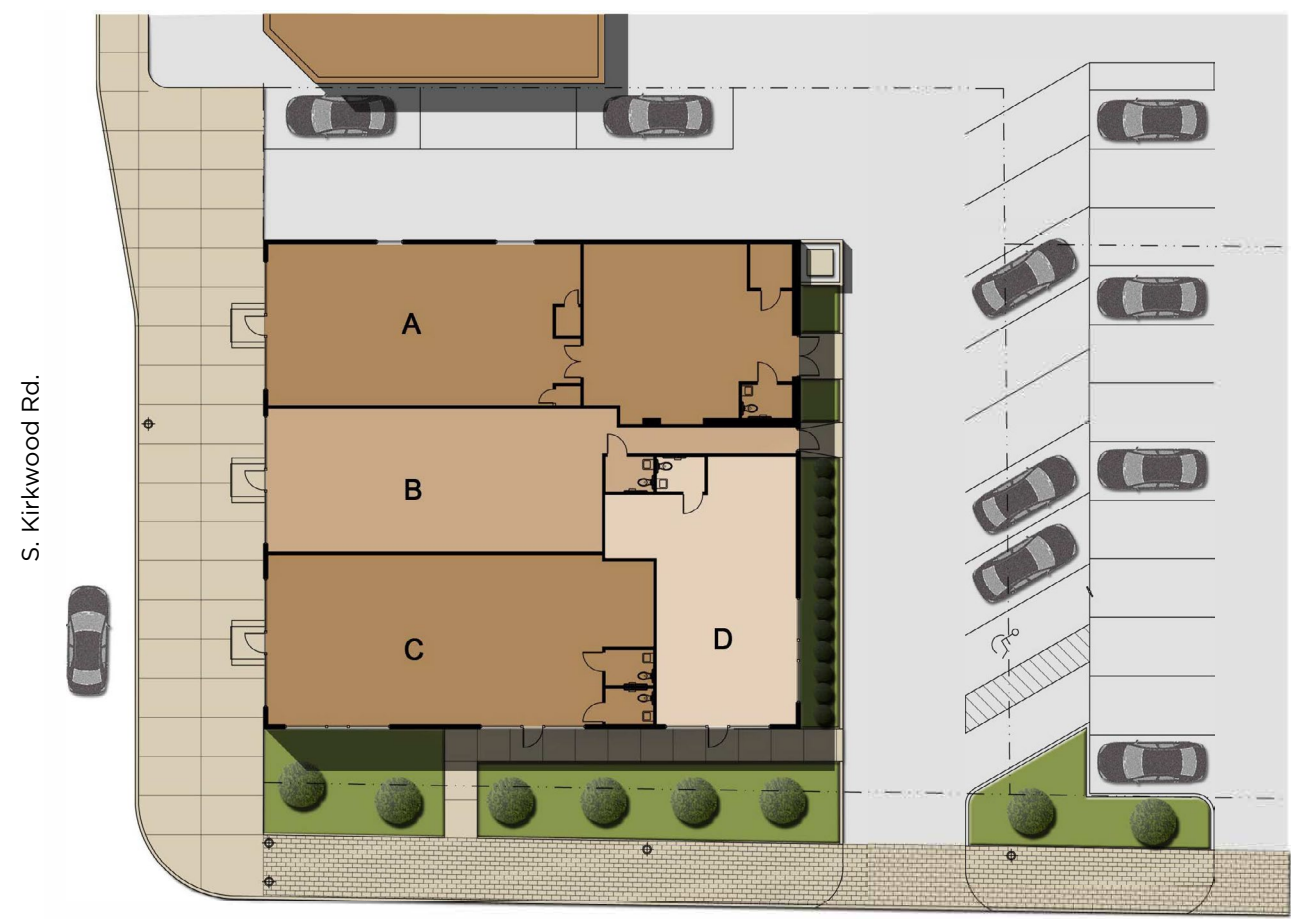
FOR LEASE

SANSONE group

100% Leased

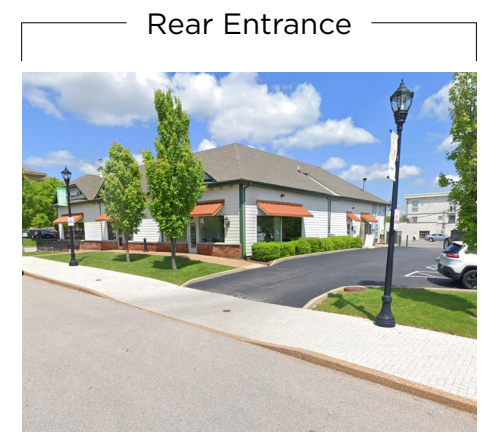


320-328 S Kirkwood Rd | Kirkwood, Missouri 63122



Tenant Index

Bldg.	Tenant	Area
A	Gateway Cleaners	2,165 SF
B	Hot Box Cookie	1,386 SF
C	Jimmy John's	1,650 SF
D	Nouveau	989 SF



- ### Property Highlights
- Frontage along S Kirkwood Rd
 - Located in Downtown Kirkwood
 - Adjacent to a pending redevelopment (call for details)
 - Surrounding retailers include Wasabi Sushi Bar, Bar Louie, Kaldis, Crushed Red, Mod Pizza, Pickleman's, Dewey's, Billy G's
 - Traffic Counts:
28,771 VPD on S. Kirkwood Rd.
97,068 VPD on Hwy 44

Area Demographics

	Population	Households	Average HHI
1 mile	11,632	5,194	\$114,791
3 miles	74,431	30,439	\$135,824
5 miles	181,194	76,901	\$125,067

For more information, contact:

Grant Mechlin
gmechlin@sansonegroup.com

Mark Kornfeld
mkornfeld@sansonegroup.com

SANSONE
group

314-727-6664
www.sansonegroup.com



314-727-6664 • www.sansonegroup.com • 120 S. Central, Suite 500 | St. Louis, Missouri 63105

The information contained herein is not warranted, although it has been obtained from the owner of the property or from other sources that we deem reliable. It is subject to change without notice. Seller and broker make no representation as to the environmental condition of the property and recommend purchaser's independent investigation.

