

# Chatham Commons

Retail Space for Lease



**NAI**TRI PROPERTIES

# Chatham Commons

## Property Highlights

- 630 East Street, Pittsboro, NC 27312
- Available Space: Space 4 - \$15.00/SF, NNN  
TICAM: \$2.36/SF
- Space Size: 2,400SF
- 46,440 SF Food Lion anchored shopping center
- Traffic count: 12,600 VPD on East Street (Hwy. 64 Bus)
- Tenants include: Food Lion, Subway, Edward Jones, Great Clips, and China Inn
- Located at the intersection of East Street (Hwy. 64) and Fairgrounds Road

### CONTACT

JOAQUIN CANALS

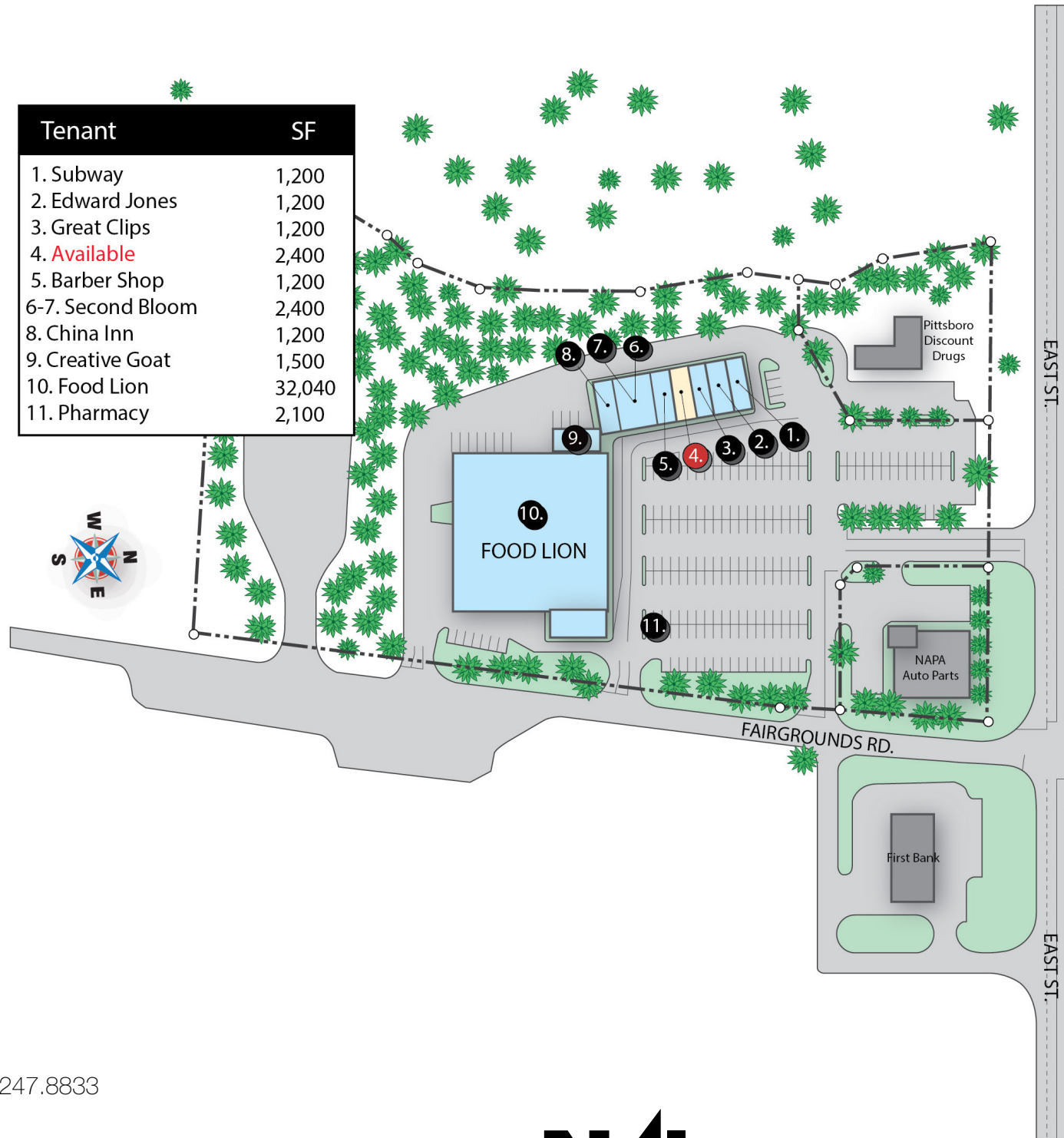
O: 919.714.7124 | C: 919.247.8833

[jcanals@triprop.com](mailto:jcanals@triprop.com)

**NAITRI** PROPERTIES



Tenant	SF
1. Subway	1,200
2. Edward Jones	1,200
3. Great Clips	1,200
4. Available	2,400
5. Barber Shop	1,200
6-7. Second Bloom	2,400
8. China Inn	1,200
9. Creative Goat	1,500
10. Food Lion	32,040
11. Pharmacy	2,100



## CONTACT

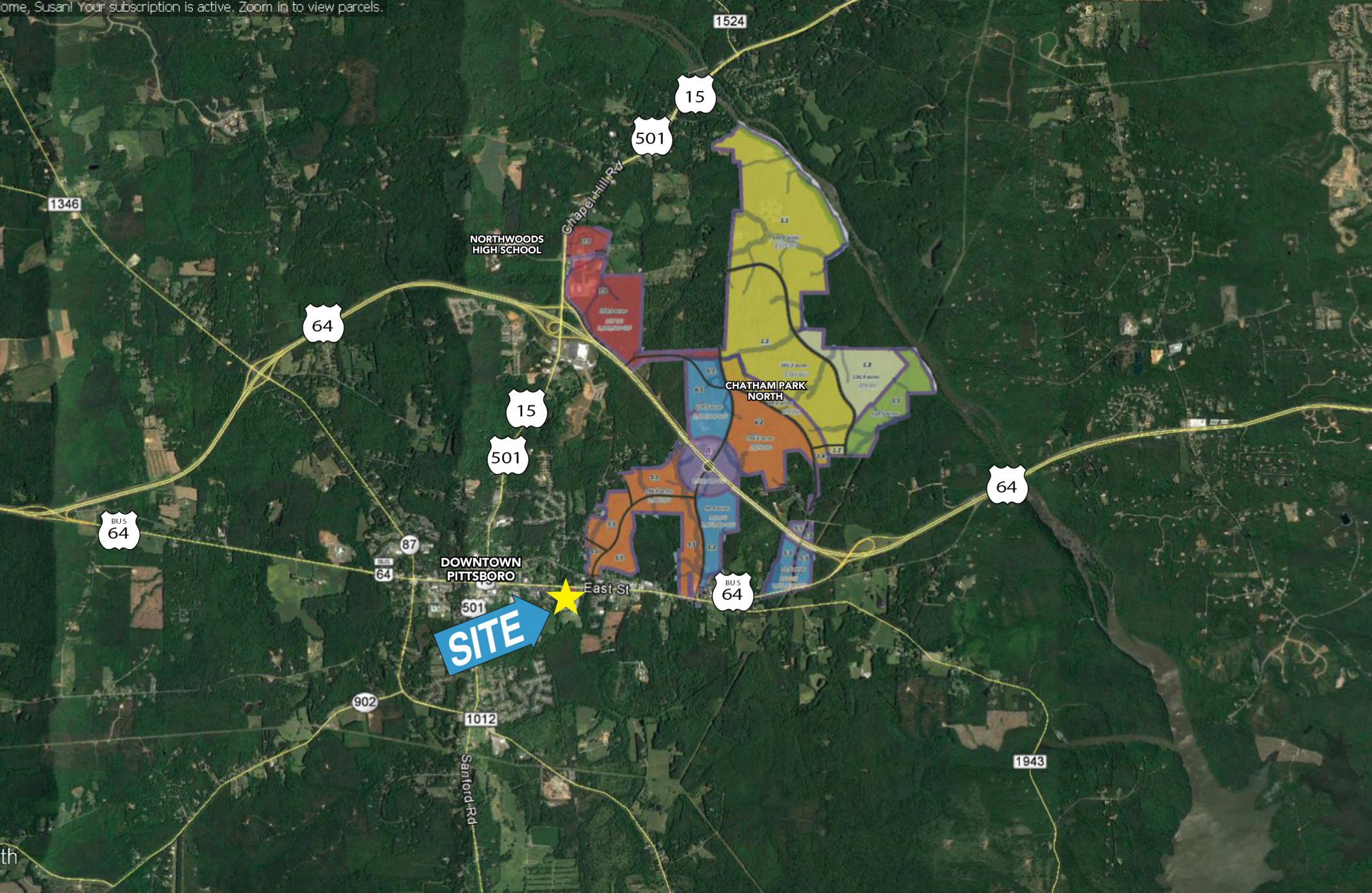
JOAQUIN CANALS

O: 919.714.7124 | C: 919.247.8833

jcanals@triprop.com

All information provided herein is from sources deemed reliable. However, all information is subject to verification. NAI Tri Properties does not independently verify nor warrant the accuracy of the information.

**NAI**TRI PROPERTIES



## CONTACT

JOAQUIN CANALS

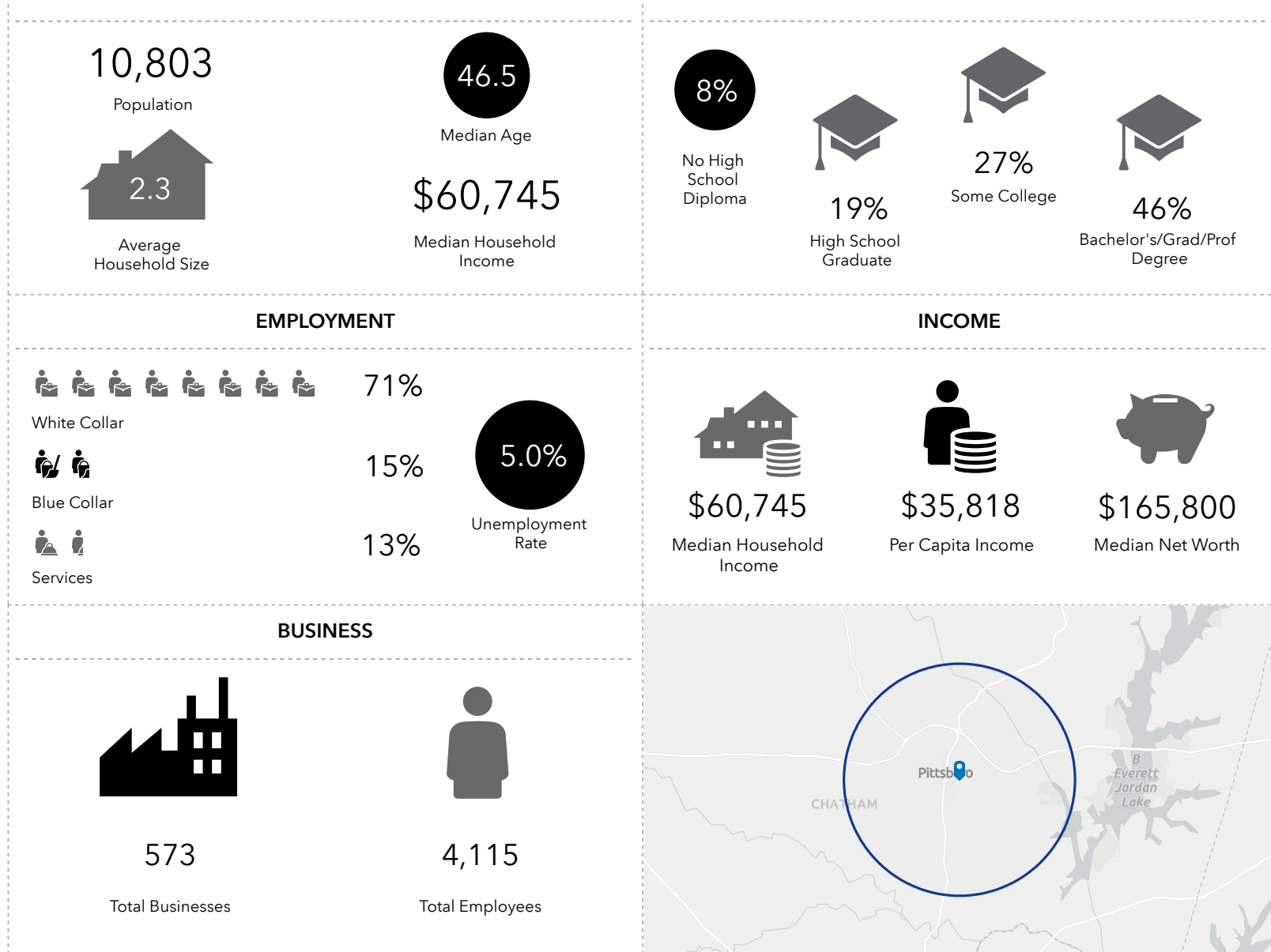
O: 919.714.7124 | C: 919.247.8833

[jcanals@triprop.com](mailto:jcanals@triprop.com)

All information provided herein is from sources deemed reliable. However, all information is subject to verification. NAI Tri Properties does not independently verify nor warrant the accuracy of the information.

# NAI TRI PROPERTIES

# DEMOGRAPHICS 5 MILE



## CONTACT

JOAQUIN CANALS

O: 919.714.7124 | C: 919.247.8833

jcanals@triprop.com

All information provided herein is from sources deemed reliable. However, all information is subject to verification. NAI Tri Properties does not independently verify nor warrant the accuracy of the information.

# NAI TRI PROPERTIES



CHATHAM PARK  
Many Choices. One Place.

## Chatham Park:

Chatham Park is a master planned community located north and east of the Town of Pittsboro, North Carolina on approximately 7,068 acres of land. Chatham Park is a special place that brings together all the elements of life. Here, nature and commerce, art and recreation, homes and schools will thrive on more than 7,000 acres. Boutique shops and artisanal restaurants will be only a short walk from home. With a growing corporate business park, you can commute to work by bike or trail. Chatham Park will provide life-affirming choices for building a career and raising a family.

- Chatham Park will donate up to ten school sites to house both public and private schools
- The Haw River will be protected by a buffer zone greater than the State of North Carolina requires
- New residences will use green power generated from CHATHAM PARK's own solar farm
- All buildings currently built will be LEED certified; new smart homes will be 30% more energy efficient than other area homes
- Chatham Park's first retail center opened fall of 2017, including local specialty shops and restaurants, a grocery store, and a movie theater
- Chatham Park will include 22 million square feet of non-residential space
- Approximately 30% of Chatham Park will be open space
- Trails, parks, and greenways will connect the surrounding neighborhoods
- 50 plus miles of walking and biking trails will offer direct access to nearby Jordan Lake and the historic Haw River
- Chatham Park is zoned for 22,000 new residences
- Amenities include a smart grid, access to a solar farm, and one gigabyte high speed internet

Source: <http://chathampark.com>

## CONTACT

JOAQUIN CANALS

O: 919.714.7124 | C: 919.247.8833

[jcanals@triprop.com](mailto:jcanals@triprop.com)

All information provided herein is from sources deemed reliable. However, all information is subject to verification. NAI Tri Properties does not independently verify nor warrant the accuracy of the information.

# NAI TRI PROPERTIES