

Angier Plaza

511 N Raleigh Street, Angier, NC



Angier Plaza

ADDRESS 511 N RALEIGH STREET, ANGIER, NC
27501

BUILDING SIZE Building A Approximately - 37,666 SF
Building B Approximately - 5,416 SF

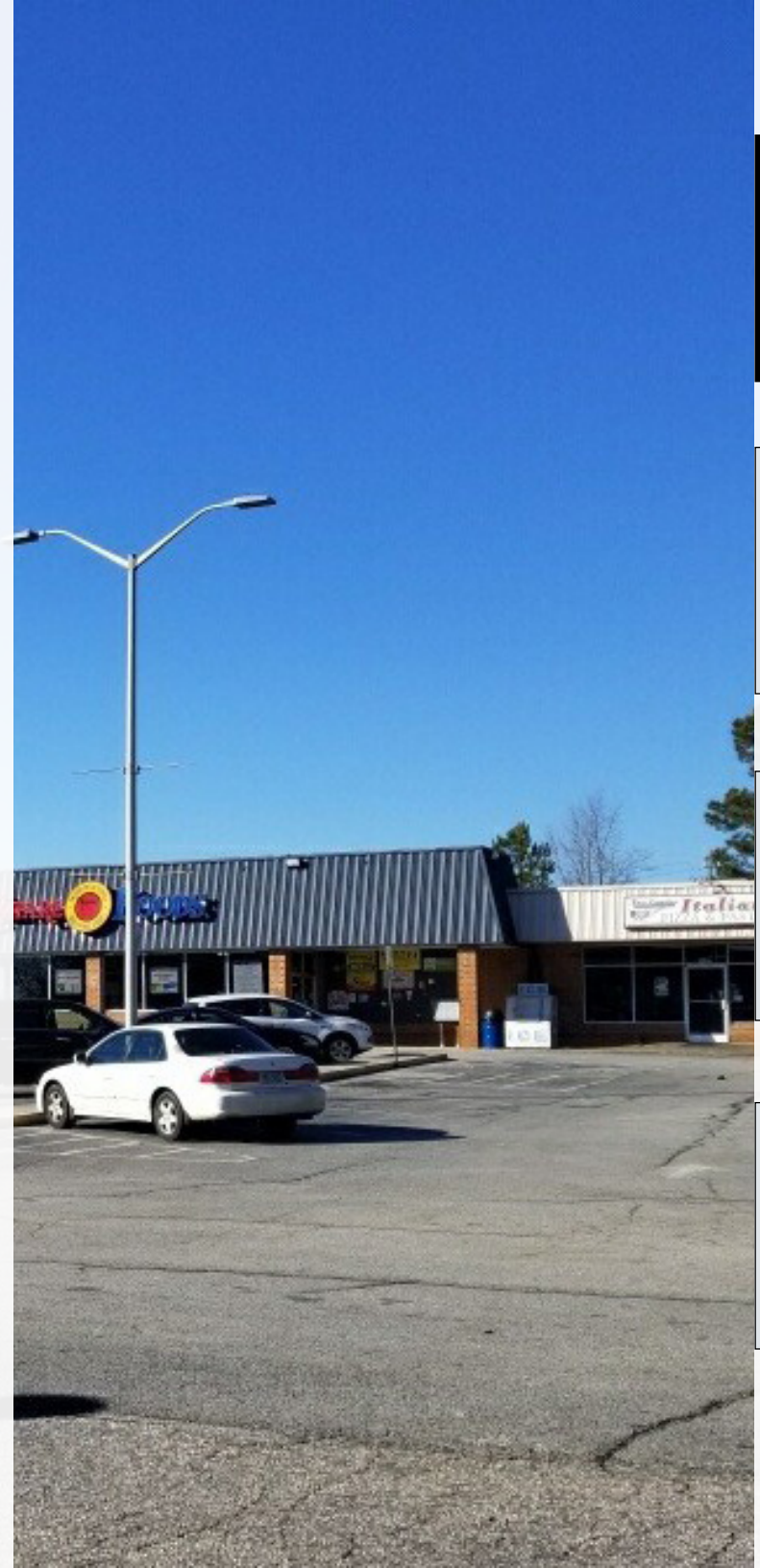
AVAILABLE SPACE 3,000SF

RENTAL RATE \$10.00/PSF, NNN

CONTACT
JOAQUIN CANALS
O: 919.714.7124 | C: 919.247.8833
jcanals@triprop.com

All information provided herein is from sources deemed reliable. However, all information is subject to verification. NAI Tri Properties does not independently verify nor warrant the accuracy of the information.

NAI TRI PROPERTIES



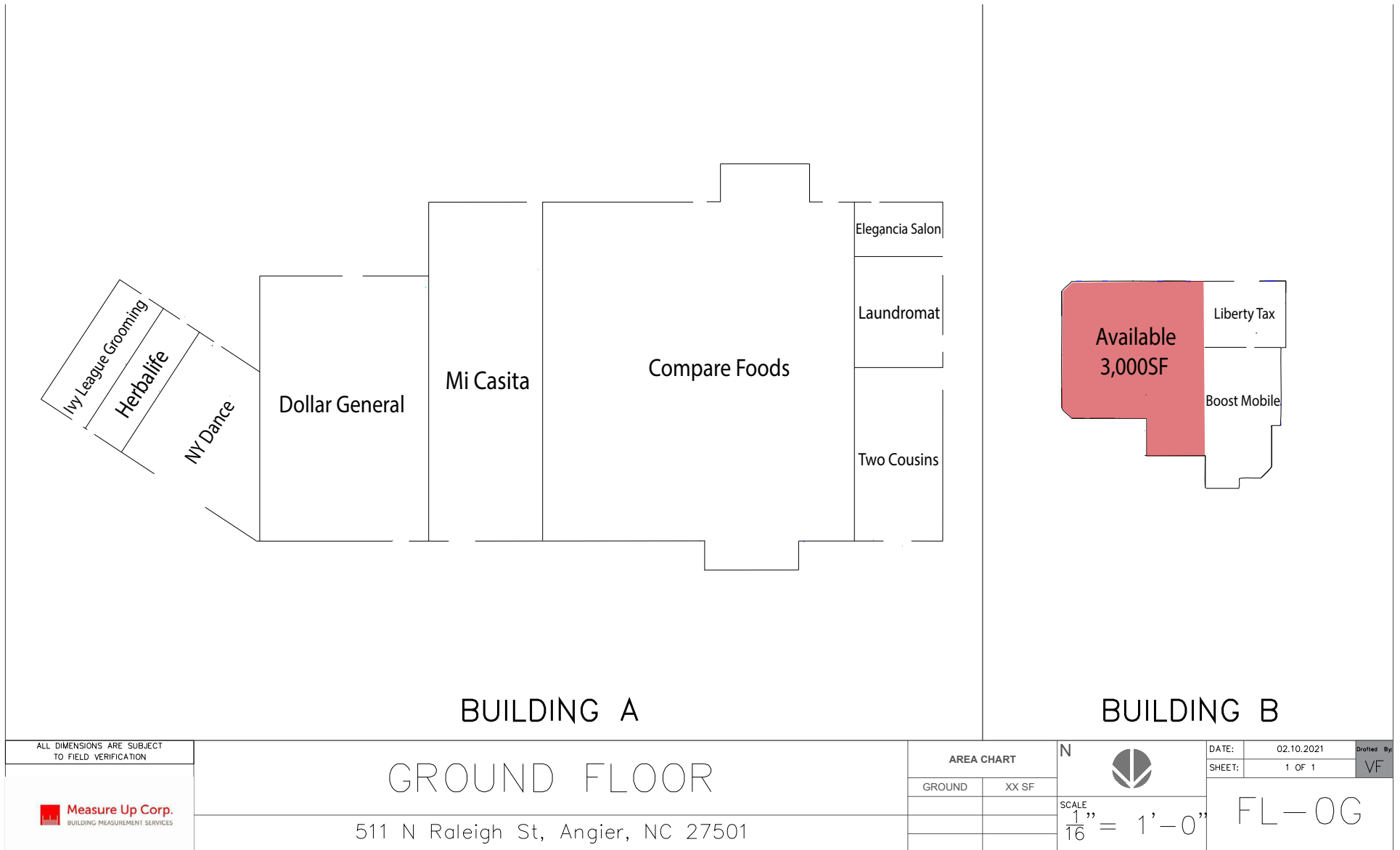
PROPERTY
OVERVIEW

FLOOR
PLAN

AREA
INFORMATION

PROPERTY
PHOTOS

FLOOR PLAN



CONTACT
JOAQUIN CANALS
O: 919.714.7124 | C: 919.247.8833
jcanals@triprop.com



All information provided herein is from sources deemed reliable. However, all information is subject to verification. NAI Tri Properties does not independently verify nor warrant the accuracy of the information.

PROPERTY OVERVIEW

FLOOR PLAN

AREA INFORMATION

PROPERTY PHOTOS

CLOSE-UP AERIAL



PROPERTY OVERVIEW

FLOOR PLAN

AREA INFORMATION

PROPERTY PHOTOS

CONTACT

JOAQUIN CANALS

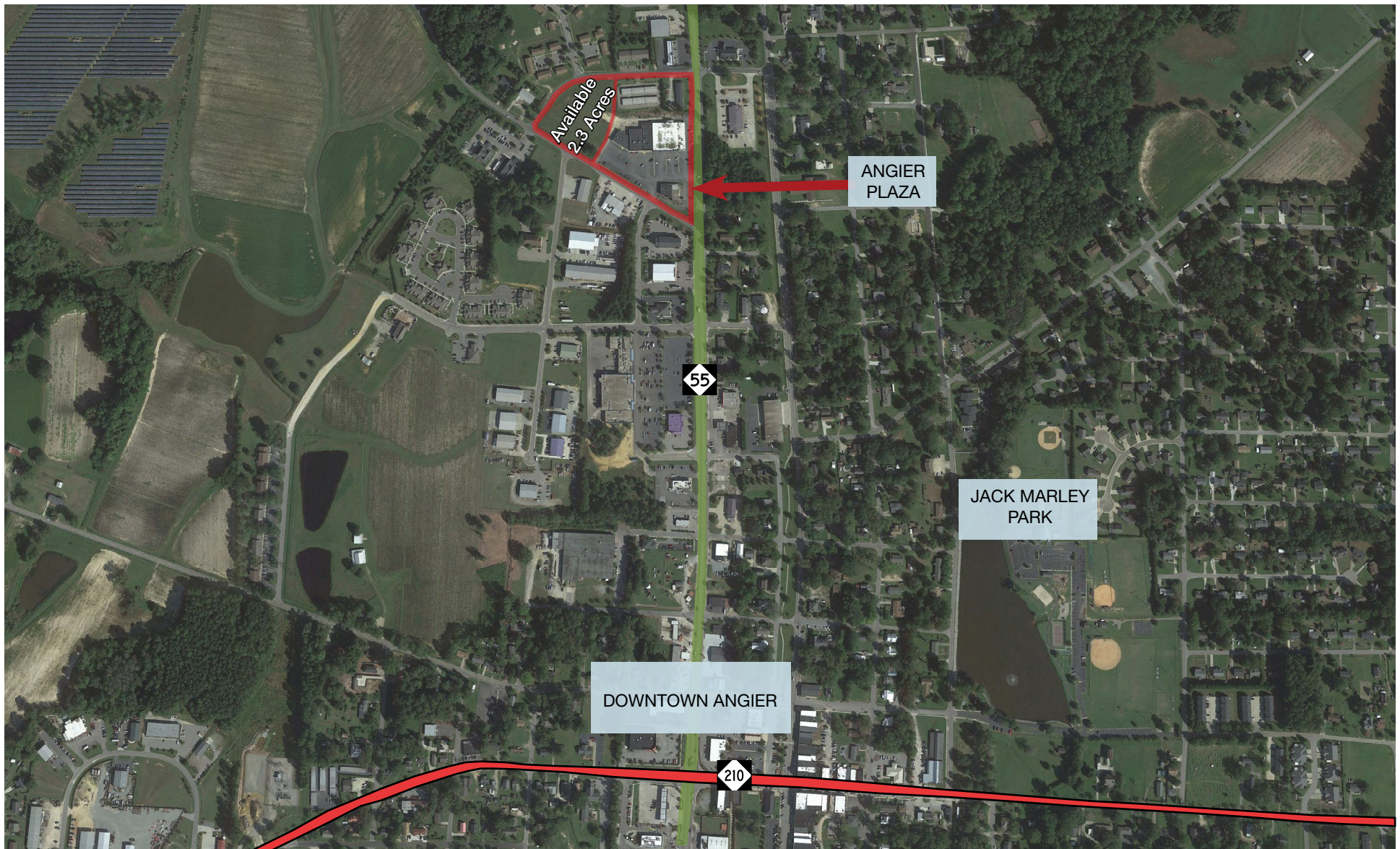
O: 919.714.7124 | C: 919.247.8833

jcanals@triprop.com

NAITRI PROPERTIES

All information provided herein is from sources deemed reliable. However, all information is subject to verification. NAI Tri Properties does not independently verify nor warrant the accuracy of the information.

SURROUNDING AREA AERIAL



PROPERTY OVERVIEW

FLOOR PLAN

AREA INFORMATION

PROPERTY PHOTOS

CONTACT
JOAQUIN CANALS
O: 919.714.7124 | C: 919.247.8833
jcanals@triprop.com

All information provided herein is from sources deemed reliable. However, all information is subject to verification. NAI Tri Properties does not independently verify nor warrant the accuracy of the information.

NAITRI PROPERTIES

DEMOGRAPHICS- 1 MILE

3,902
Population

2.5
Average Household Size

36.7
Median Age

\$51,328
Median Household Income

16%
No High School Diploma

30%
High School Graduate

34%
Some College

19%
Bachelor's/Grad/Prof Degree

EMPLOYMENT

63%
White Collar

28%
Blue Collar

9%
Services

12.0%
Unemployment Rate

INCOME

\$51,328
Median Household Income

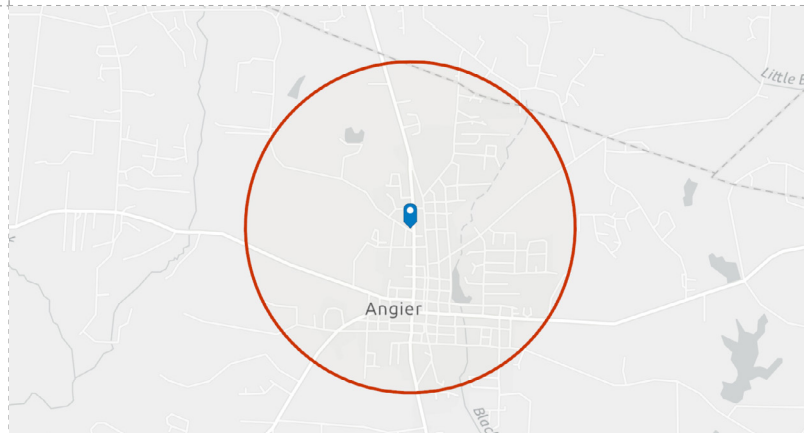
\$24,314
Per Capita Income

\$57,977
Median Net Worth

BUSINESS

273
Total Businesses

1,637
Total Employees



CONTACT
JOAQUIN CANALS
O: 919.714.7124 | C: 919.247.8833
jcanals@triprop.com



All information provided herein is from sources deemed reliable. However, all information is subject to verification. NAI Tri Properties does not independently verify nor warrant the accuracy of the information.

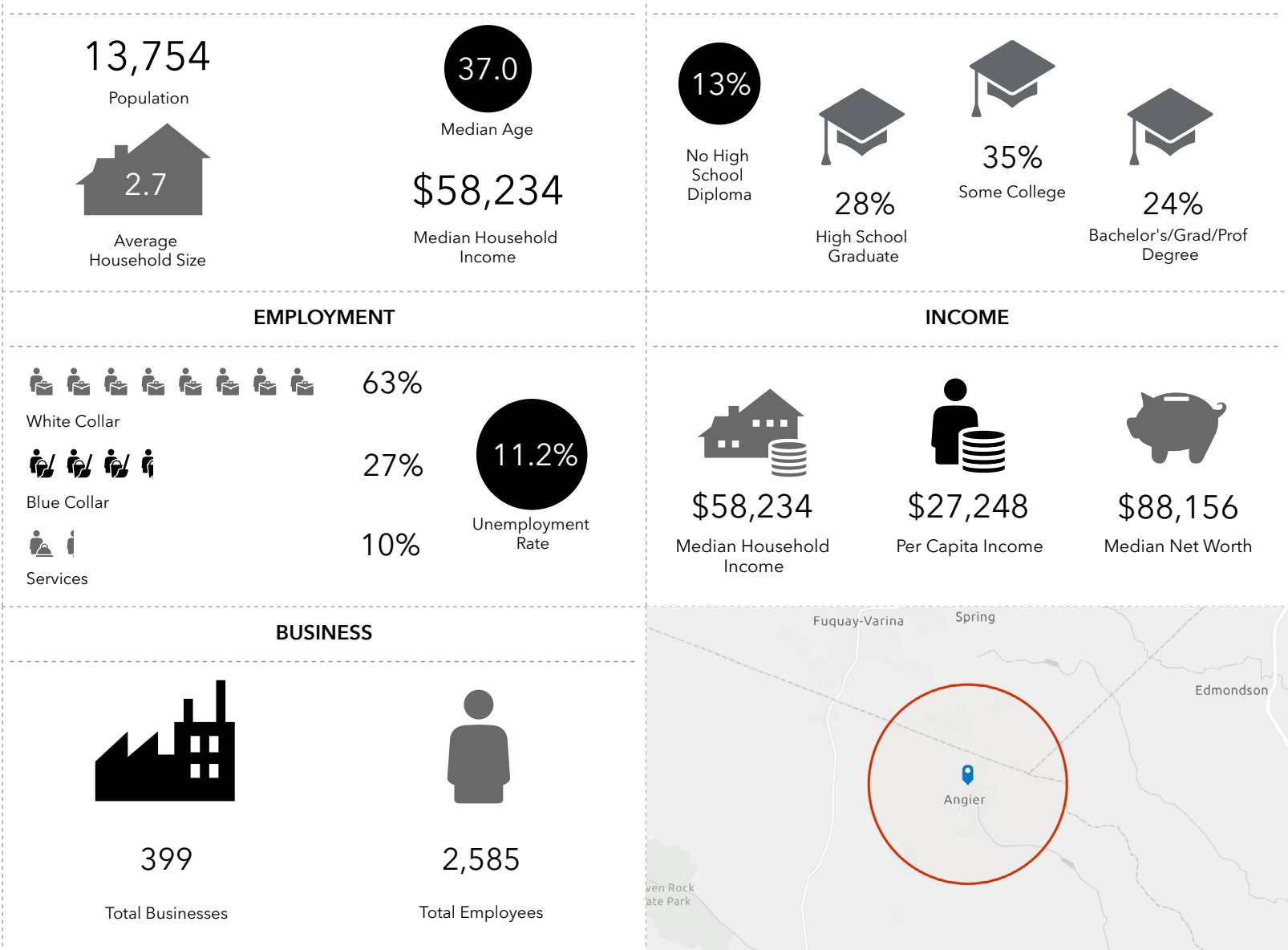
PROPERTY OVERVIEW

FLOOR PLAN

AREA INFORMATION

PROPERTY PHOTOS

DEMOGRAPHICS- 3 MILE



PROPERTY OVERVIEW

FLOOR PLAN

AREA INFORMATION

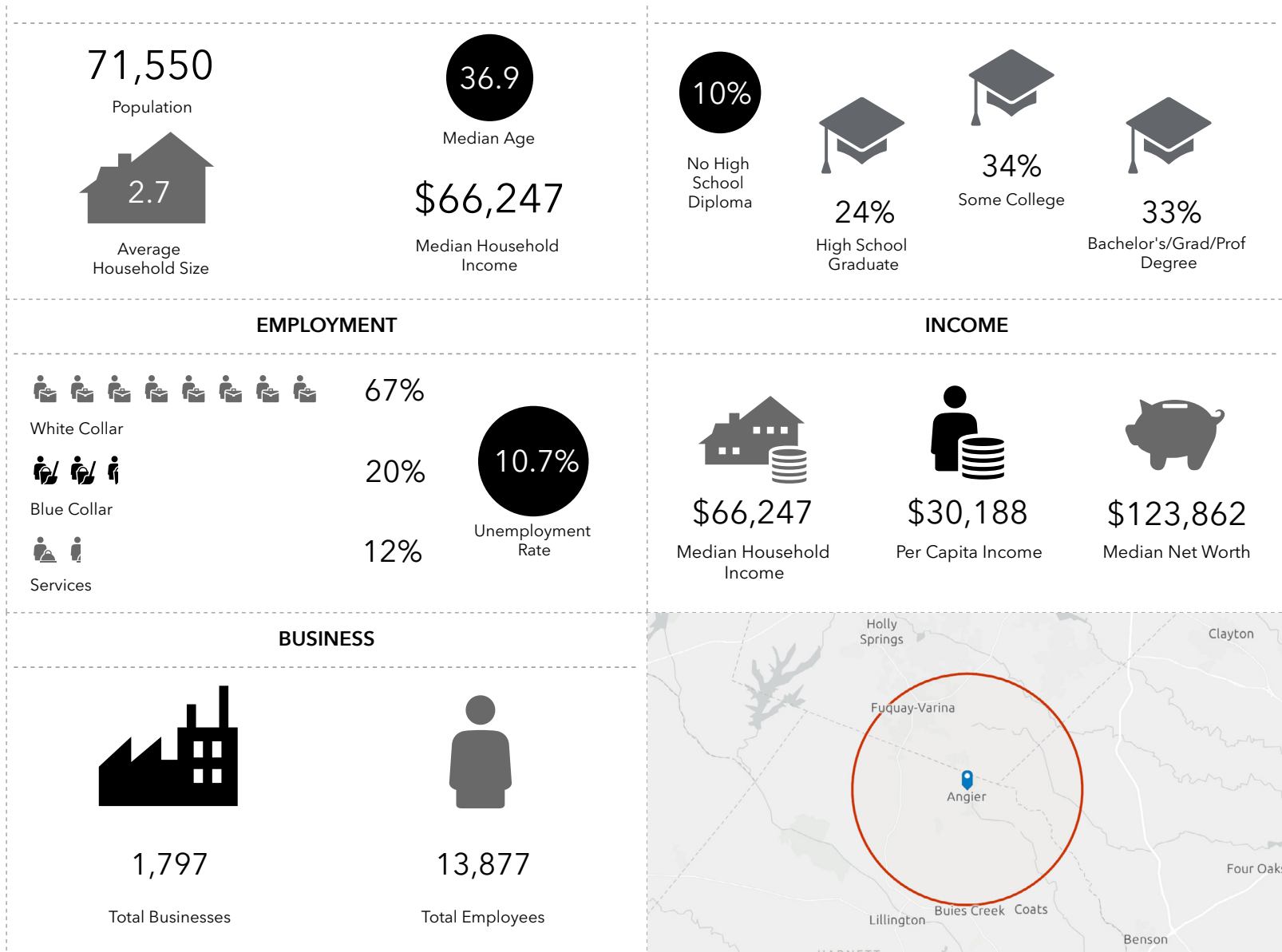
PROPERTY PHOTOS

CONTACT
JOAQUIN CANALS
O: 919.714.7124 | C: 919.247.8833
jcanals@triprop.com

NAITRI PROPERTIES

All information provided herein is from sources deemed reliable. However, all information is subject to verification. NAI Tri Properties does not independently verify nor warrant the accuracy of the information.

DEMOGRAPHICS- 7 MILE



PROPERTY OVERVIEW

FLOOR PLAN

AREA INFORMATION

PROPERTY PHOTOS

CONTACT
JOAQUIN CANALS
O: 919.714.7124 | C: 919.247.8833
jcanals@triprop.com

NAI TRI PROPERTIES

All information provided herein is from sources deemed reliable. However, all information is subject to verification. NAI Tri Properties does not independently verify nor warrant the accuracy of the information.



PROPERTY
OVERVIEW

FLOOR
PLAN



AREA
INFORMATION



PROPERTY
PHOTOS

CONTACT
JOAQUIN CANALS
O: 919.714.7124 | C: 919.247.8833
jcanals@triprop.com

NAITRI PROPERTIES

All information provided herein is from sources deemed reliable. However, all information is subject to verification. NAI Tri Properties does not independently verify nor warrant the accuracy of the information.