

# West Street, Selma NC

Investment | Land





# OAK TREE DRIVE

ADDRESS 451 Oak Tree Drive, Selma, NC 27576

LOT SIZE  $\pm$  2.27 Acres

ZONING I-2

FEATURES  
Utilities: on site  
Flat Topography  
Build-to-Suit Possibility



**\$100,000**

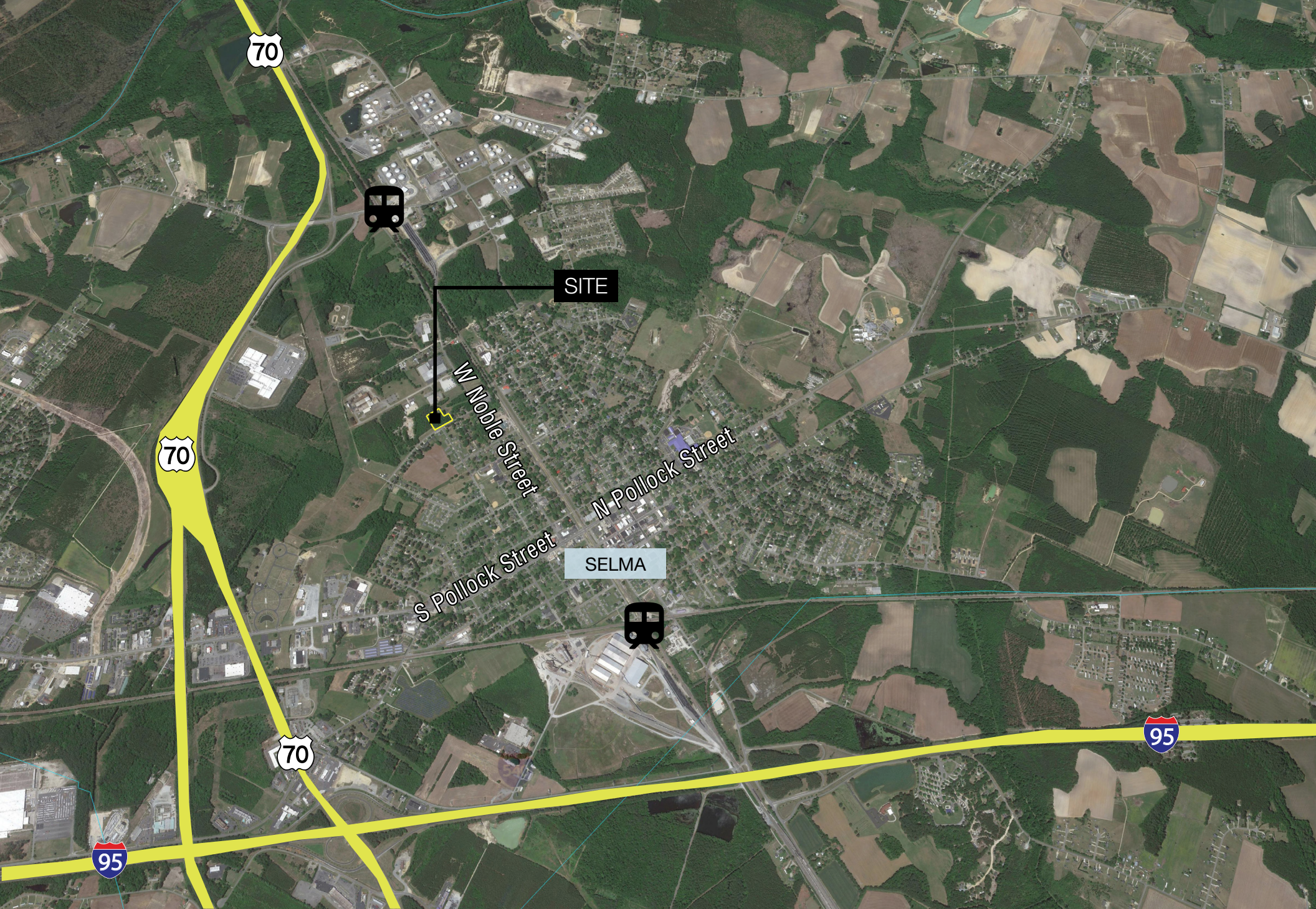
**(Approx. \$44,052/Acre)**



Joaquin Canals  
919.247.8833  
jcanals@naicarolantic.com

**NAI**TRI PROPERTIES







# DEMOGRAPHICS

5 Mile Radius

## KEY FACTS

29,612

Population



Average  
Household Size

38.2

Median Age

\$41,180

Median Household  
Income

## EDUCATION

20%

No High  
School  
Diploma



31%

High School  
Graduate



32%

Some College



17%

Bachelor's/Grad/Prof  
Degree

## EMPLOYMENT



54%

White Collar



34%

Blue Collar



Services

12%

12.2%

Unemployment  
Rate

## INCOME



\$41,180

Median Household  
Income



\$21,208

Per Capita Income



\$35,510

Median Net Worth

## BUSINESS



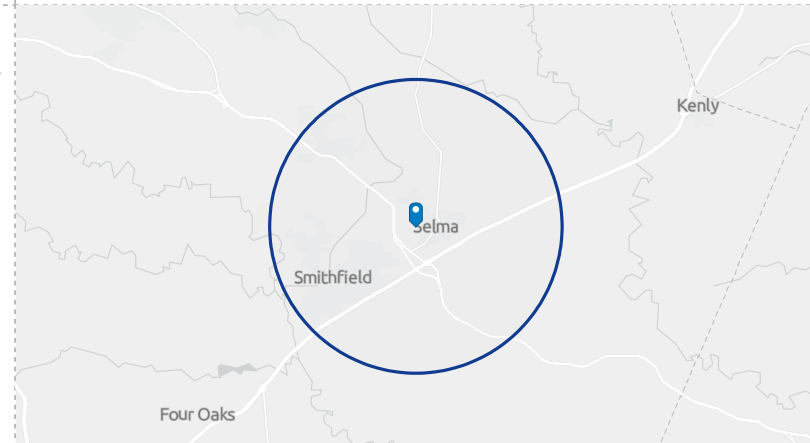
1,447

Total Businesses



17,652

Total Employees





Id	Bearing
L1	N 09°16'56"
L2	N 09°16'56"
L3	N 33°41'32"
L4	N 33°41'32"
L5	S 34°12'11"
L6	S 32°45'36"
L7	S 34°15'46"
L8	N 34°16'01"

RAZIER HOLDINGS LLC  
B 77 PG 377  
P. NO. 14001015M  
ZONING I-2

TOWN OF SELMA  
WELL SITE NO. 4  
TP NO. 14N99031H  
ZONING I-2

LARRY TOOLE  
DB 3904 PG 360  
TP NO. 14035008  
ZONING I-2

LOT 11  
K TREE CORPORATE  
K  
acres  
434.47 sq ft

