

AVAILABLE  
**Automotive Dealership**

3102 US Hwy 19 | Holiday, FL 34691

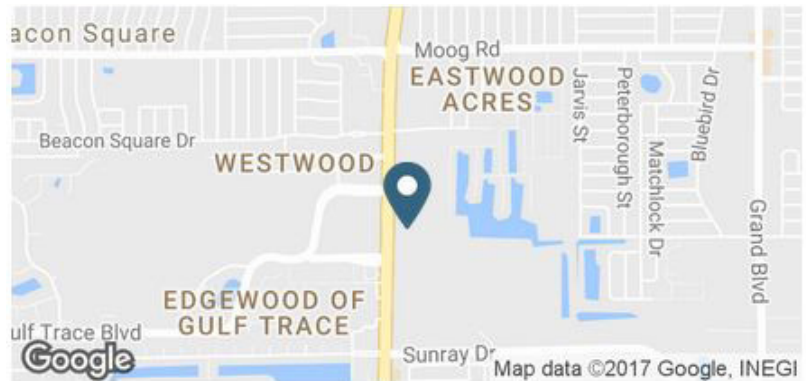


**Overview**

<b>AVAILABLE</b>	19,688 SF 10.79 Acres
<b>PRICING</b>	Call For Price

**Description**

- Located on US Hwy 19 in Holiday, FL (New Port Richey) just south of State Road 54 in SW Pasco County
- Former full service Auto Dealership in excellent condition situated on approximately 10.79 acres
- Highly visible location with 383 feet of frontage on US 19 with signalized entry into site
- Traffic signal access at the intersection of Gulf Trace Boulevard for easy egress/ingress
- 300 parking spaces with opportunities to expand
- Built in 2008



**Contact**

**MARK SNEED, CCIM, CRX, CLS**  
813.371.1080 | mark.sneed@srsre.com

**ELLEN GRISETTE**  
404.861.5188 | ellen.grisette@srsre.com

**Demographics**

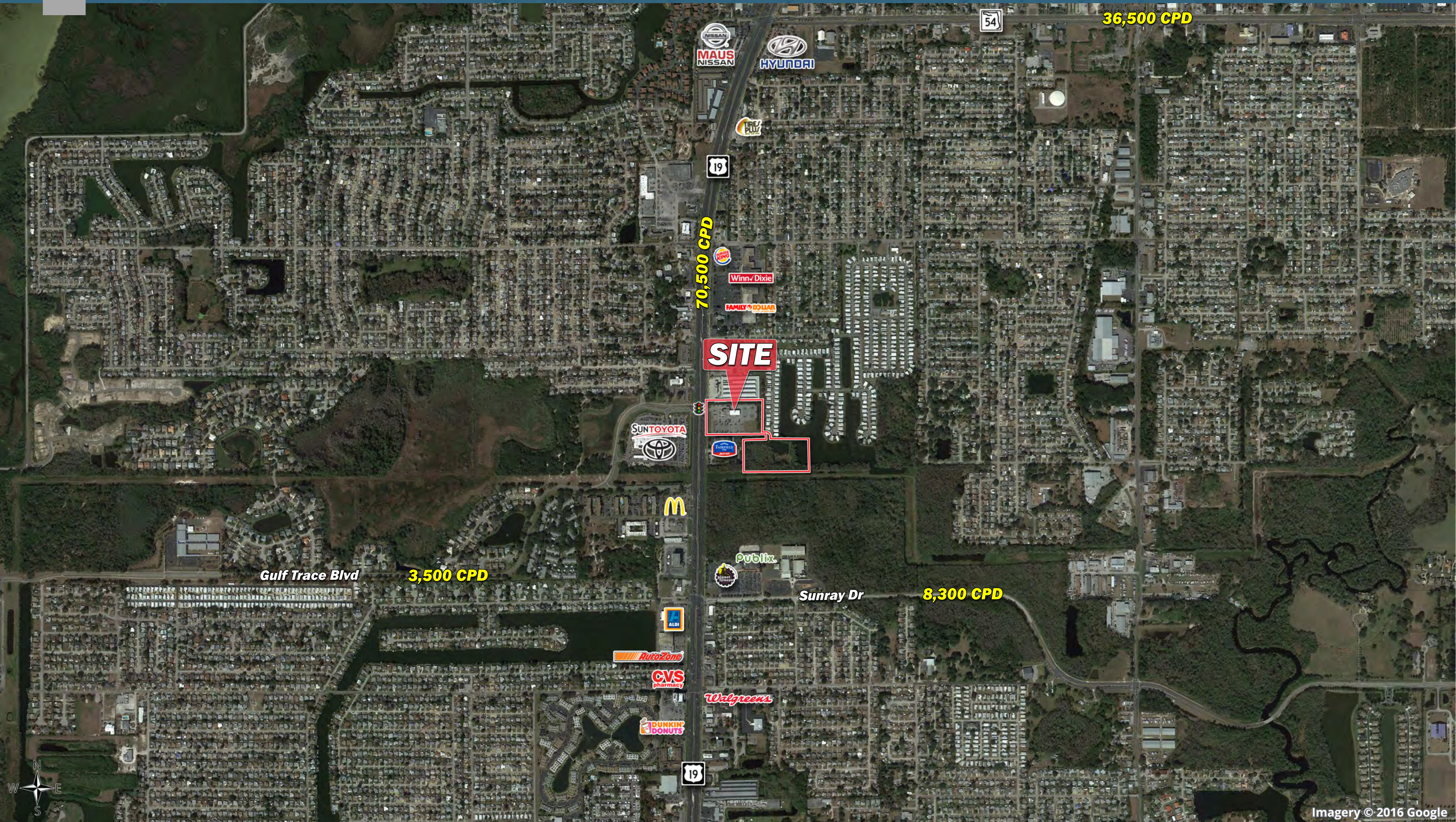
	1 MILE	3 MILE	5 MILE
Total Population	12,746	71,883	129,650
2020 Growth	0.52%	0.78%	0.74%
Median HH Income	\$35,111	\$36,612	\$37,890
Daytime Population	3,029	18,833	47,134

Year: 2016 | Source: Esri

**Traffic Counts**

US Hwy 19	70,500 CPD
Gulf Trace Blvd	3,500 CPD

Year: 2015 | Source: FDOT



70,500 CPD

36,500 CPD

**SITE**

Gulf Trace Blvd

3,500 CPD

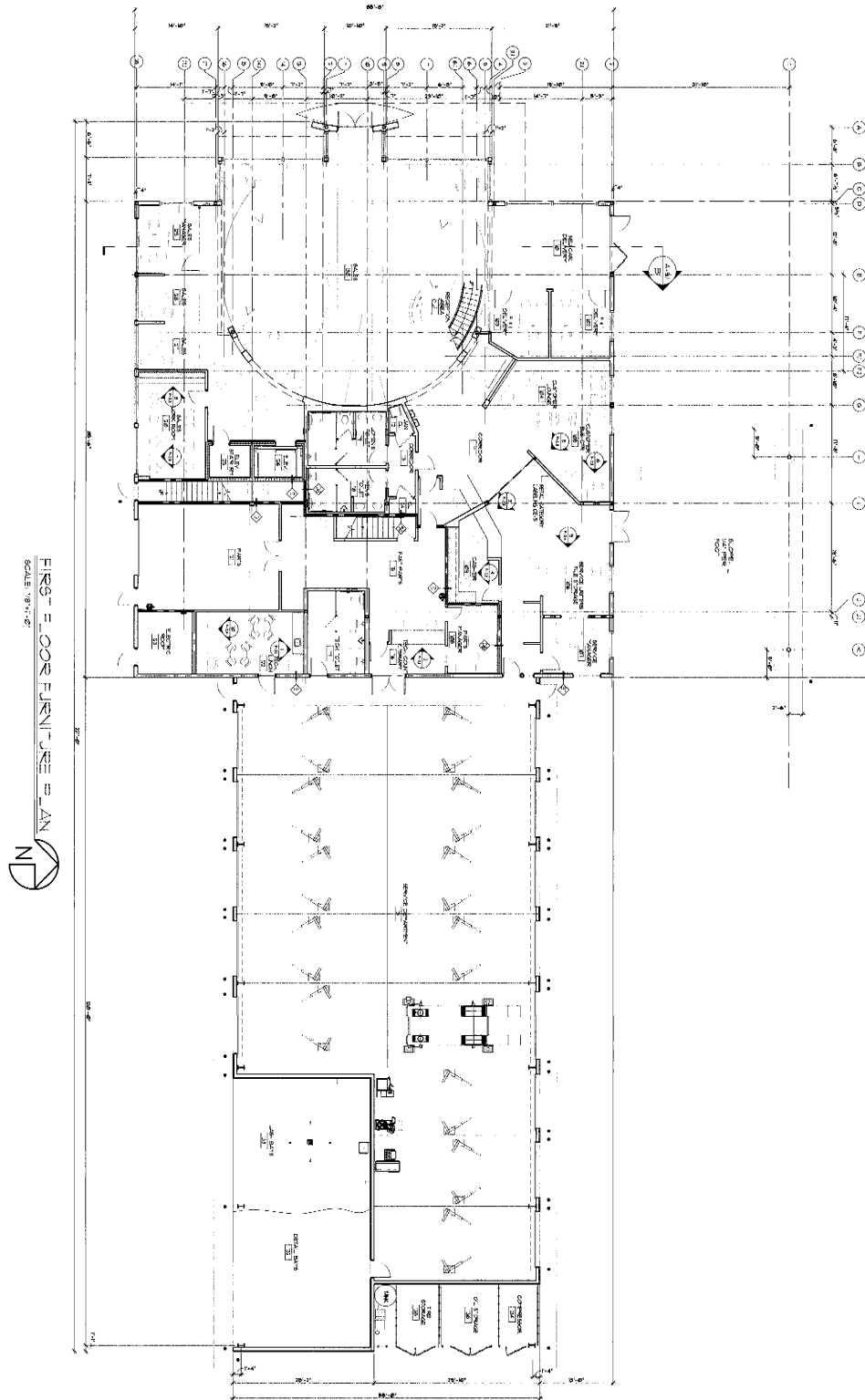
Sunray Dr

8,300 CPD

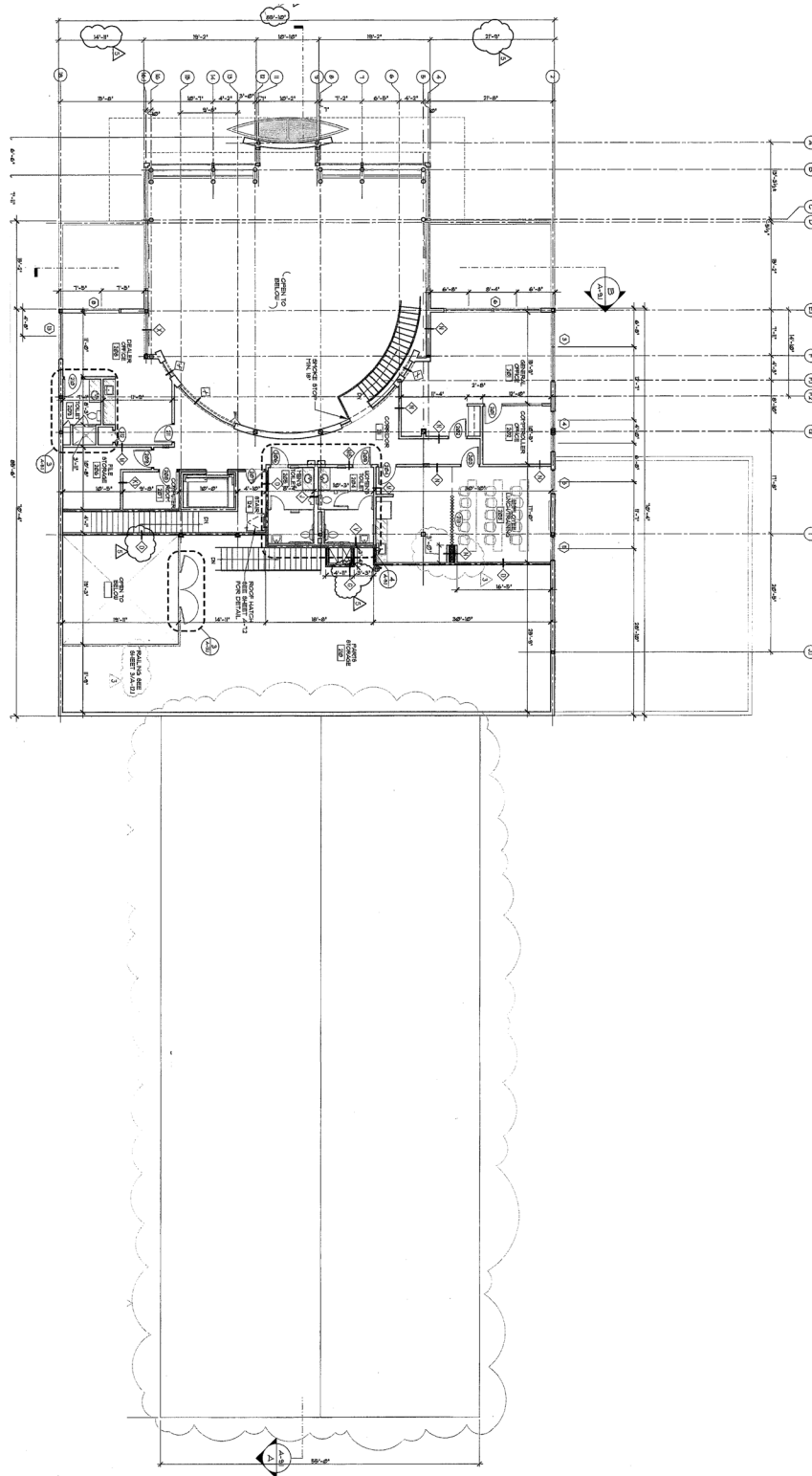




## 1st Floor



## 2nd Floor



# Executive Summary

3102 US Hwy 19 | Holiday, FL 34691



	1 mile	3 miles	5 miles
<b>Population</b>			
2000 Population	12,303	64,611	116,540
2010 Population	12,660	70,110	126,730
2016 Population	12,746	71,883	129,650
2021 Population	13,081	74,713	134,545
2000-2010 Annual Rate	0.29%	0.82%	0.84%
2010-2015 Annual Rate	0.11%	0.40%	0.37%
2015-2020 Annual Rate	0.52%	0.78%	0.74%
<b>Race and Ethnicity</b>			
2016 White Alone	87.8%	87.6%	88.1%
2016 Black Alone	4.3%	4.2%	4.2%
2016 American Indian/Alaska Native Alone	0.4%	0.4%	0.4%
2016 Asian Alone	2.0%	2.2%	2.1%
2016 Pacific Islander Alone	0.0%	0.1%	0.1%
2016 Other Race	2.7%	2.8%	2.5%
2016 Two or More Races	2.7%	2.8%	2.7%
2016 Hispanic Origin (Any Race)	12.5%	12.1%	11.1%
<b>Median Age</b>			
The median age in this area is 44.5, compared to U.S. median age of 37.9.			
<b>Median Household Income</b>			
2016 Median Household Income	\$35,111	\$36,612	\$37,890
2021 Median Household Income	\$34,541	\$36,896	\$39,278
2015-2020 Annual Rate	-0.33%	0.15%	0.72%
<b>Average Household Income</b>			
2016 Average Household Income	\$43,181	\$49,715	\$54,441
2021 Average Household Income	\$45,538	\$53,333	\$58,674
2015-2020 Annual Rate	1.07%	1.41%	1.51%
<b>Per Capita Income</b>			
2016 Per Capita Income	\$19,006	\$21,727	\$23,887
2021 Per Capita Income	\$19,880	\$23,137	\$25,545
2015-2020 Annual Rate	0.90%	1.27%	1.35%
<b>Housing</b>			
2000 Total Housing Units	6,799	35,043	61,474
2000 Owner Occupied Housing Units	4,798	24,516	41,842
2000 Renter Occupied Housing Units	931	4,980	10,650
2000 Vacant Housing Units	1,070	5,547	8,982
2010 Total Housing Units	6,968	37,661	67,931
2010 Owner Occupied Housing Units	3,897	21,920	39,449
2010 Renter Occupied Housing Units	1,624	8,491	16,055
2010 Vacant Housing Units	1,447	7,250	12,427
2016 Total Housing Units	7,029	38,645	69,496
2016 Owner Occupied Housing Units	3,557	20,576	37,045
2016 Renter Occupied Housing Units	1,932	10,281	19,122
2016 Vacant Housing Units	1,540	7,788	13,329
2021 Total Housing Units	7,189	39,966	71,612
2021 Owner Occupied Housing Units	3,578	21,047	37,926
2021 Renter Occupied Housing Units	2,018	10,842	20,021
2021 Vacant Housing Units	1,594	8,078	13,665
<b>Data for all businesses in area</b>			
	<b>1 mile</b>	<b>3 miles</b>	<b>5 miles</b>
Total Businesses:	371	2,473	5,719
Total Employees:	3,029	18,833	47,134
Total Residential Population:	12,746	71,883	129,650
Employee/Residential Population Ratio:	0.24:1	0.26:1	0.36:1