

FOR LEASE

Inline Retail Space

5420 Dr M.L.K. Jr St N | Saint Petersburg, FL



Overview

AVAILABLE SF 1,858 SF

LEASE RATE \$25/SF NNN



Description

- Inline storefront space adjacent to Walgreens available for sublease
- Exterior storefront and pylon signage off of 54th Ave N.
- Excellent ingress, egress and parking
- Suitable for retail, quick service restaurant or office users

Nearby Retailers



Demographics

	1 MILE	3 MILES	5 MILES
Population	15,865	112,966	244,985
2024 Growth	0.55%	0.51%	0.84%
Median HH Income	\$54,297	\$53,529	\$51,281
Daytime Population	11,864	101,466	267,398

Year: 2019 | Source: ESRI

Contact

MARK SNEED, CCIM, CRX, CLS
813.371.1080 | mark.sneed@srsre.com

Traffic Counts

54th Ave N	19,500 VPD
Dr. MLKJ St. N	25,500 VPD

Year: 2019 | Source: FDOT

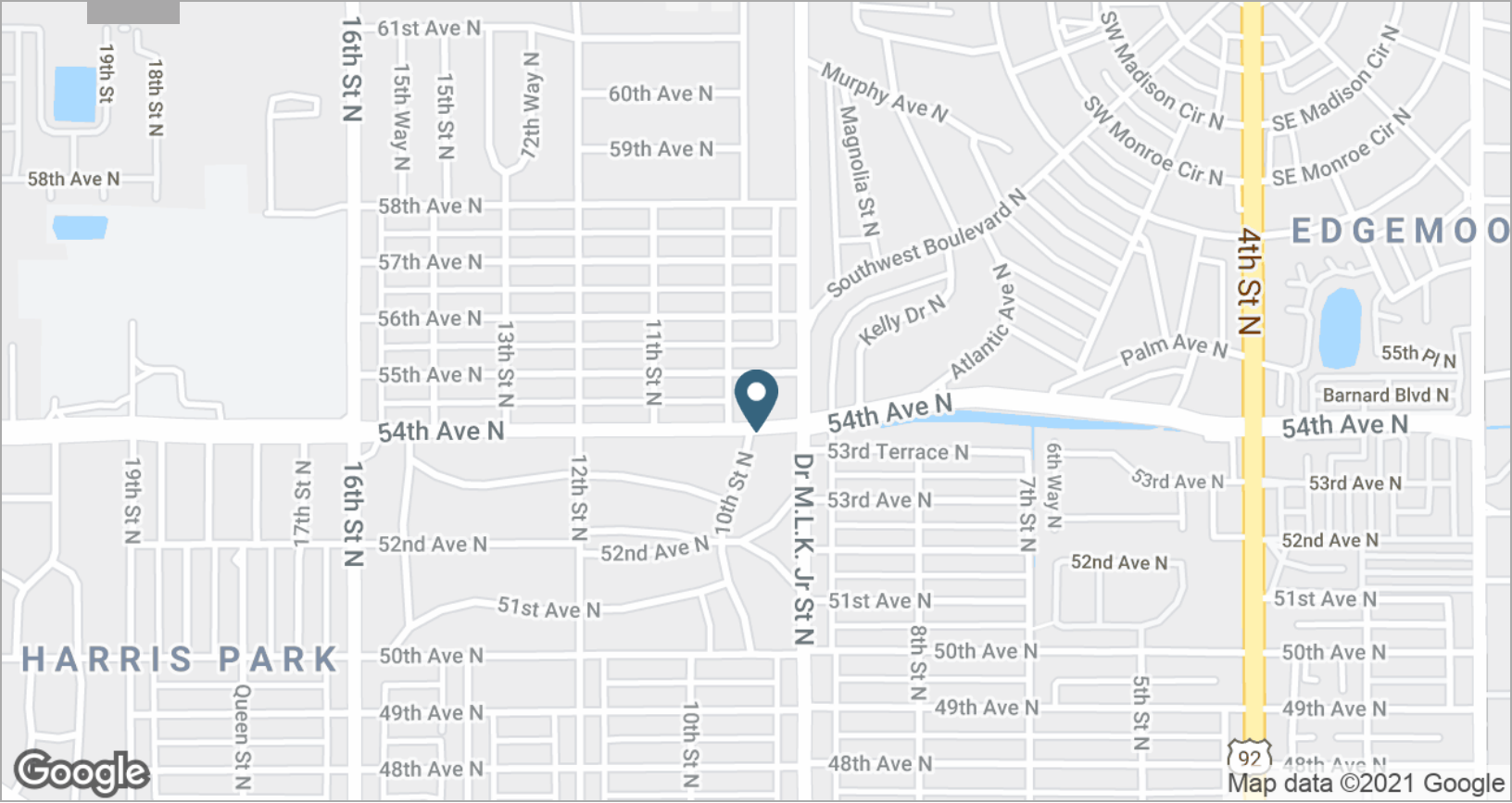
SRS REAL ESTATE PARTNERS | 4010 Boy Scout Boulevard, Suite 355 | Tampa, FL 33607 | 813.371.0980

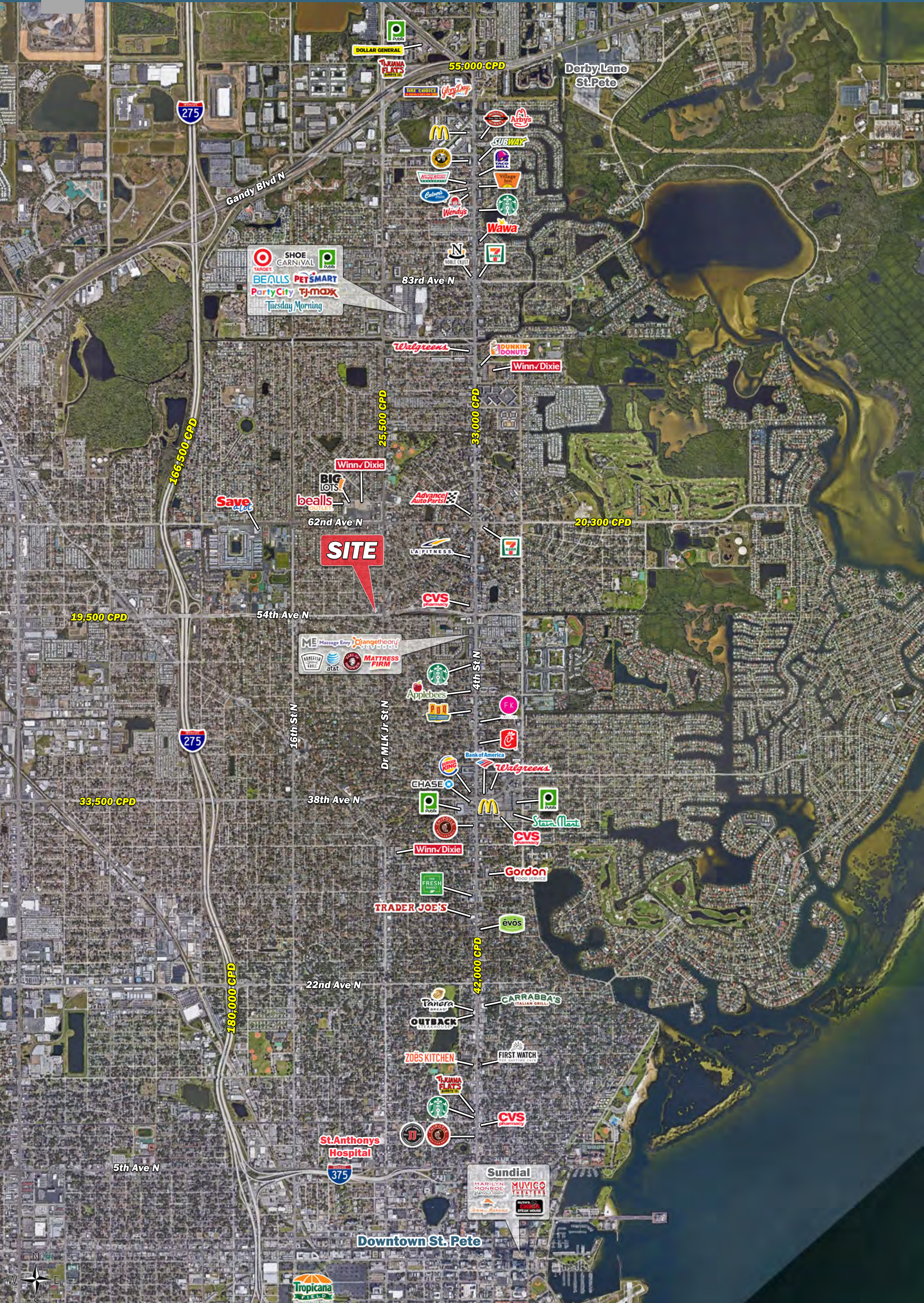
This information contained herein was obtained from sources deemed to be reliable; however SRS Real Estate Partners makes no guarantees, warranties or representations as to the completeness or accuracy thereof.

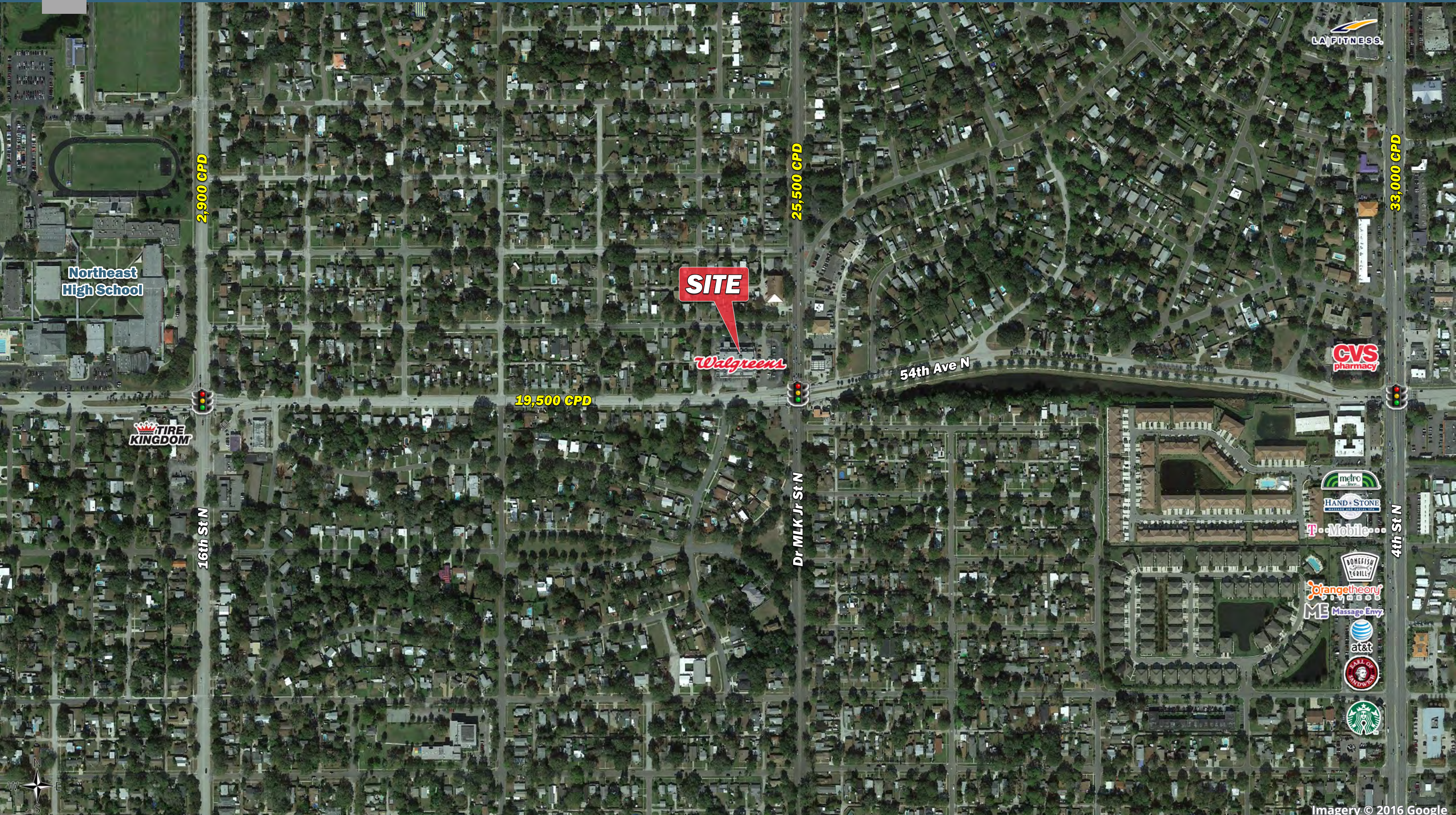
SRSRE.COM

Inline Retail Space

5420 Dr M.L.K. Jr St N | Saint Petersburg, FL







SITE

Walgreens

Northeast High School

2,900 CPD

19,500 CPD

25,500 CPD

54th Ave N

33,000 CPD

TIRE KINGDOM

CVS pharmacy

metro

HAND + STONE

T-Mobile

BONEFISH GRILL

Orangetheory FITNESS

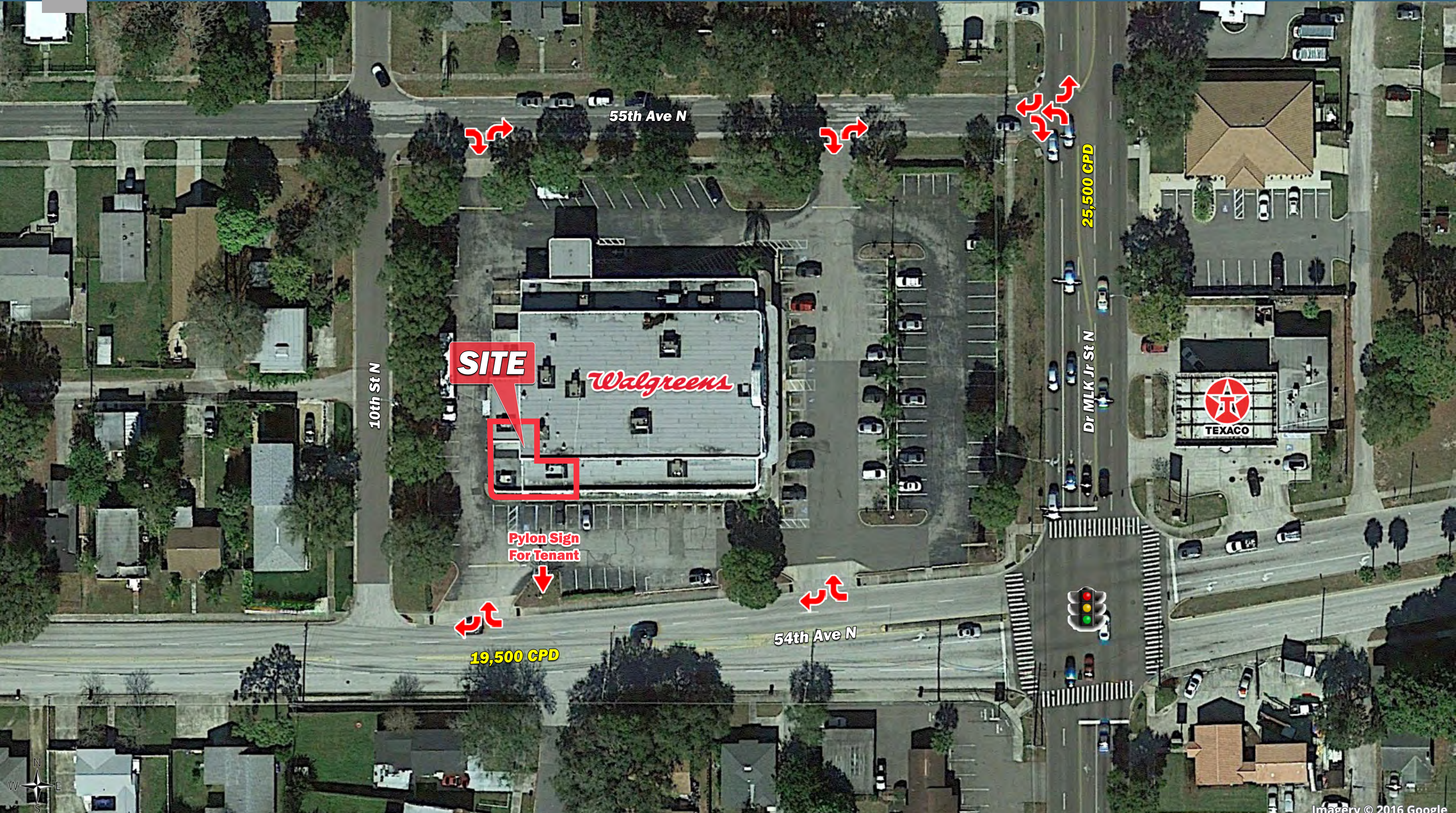
ME Massage Envy

at&t

SALE OF SANDWICHES

Starbucks

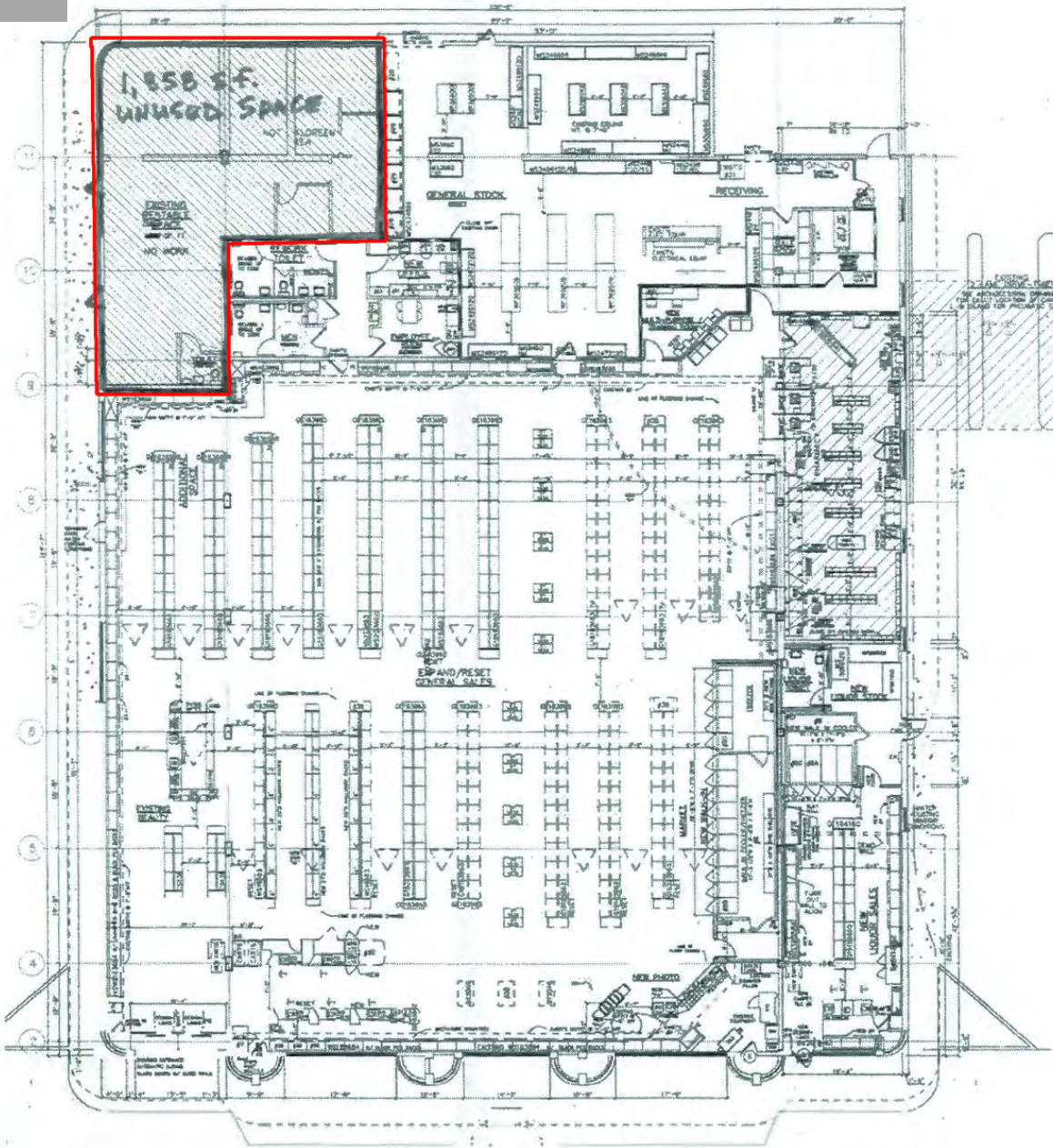
LA FITNESS



Imagery © 2016 Google

Inline Retail Space

5420 Dr M.L.K. Jr St N | Saint Petersburg, FL



INTERIOR HANGING SIGNS

GENERAL NOTES:
 1. SEE PROJECT DATA FOR FIXTURE MANUFACTURER
 2. ALL SIGNS TO BE MADE OF ALUMINUM
 3. SIGNAGE TO BE MADE OF ALUMINUM
 4. SIGNAGE TO BE MADE OF ALUMINUM
 5. SIGNAGE TO BE MADE OF ALUMINUM
 6. SIGNAGE TO BE MADE OF ALUMINUM
 7. SIGNAGE TO BE MADE OF ALUMINUM
 8. SIGNAGE TO BE MADE OF ALUMINUM
 9. SIGNAGE TO BE MADE OF ALUMINUM
 10. SIGNAGE TO BE MADE OF ALUMINUM
 11. SIGNAGE TO BE MADE OF ALUMINUM
 12. SIGNAGE TO BE MADE OF ALUMINUM
 13. SIGNAGE TO BE MADE OF ALUMINUM
 14. SIGNAGE TO BE MADE OF ALUMINUM
 15. SIGNAGE TO BE MADE OF ALUMINUM
 16. SIGNAGE TO BE MADE OF ALUMINUM
 17. SIGNAGE TO BE MADE OF ALUMINUM
 18. SIGNAGE TO BE MADE OF ALUMINUM
 19. SIGNAGE TO BE MADE OF ALUMINUM
 20. SIGNAGE TO BE MADE OF ALUMINUM
 21. SIGNAGE TO BE MADE OF ALUMINUM
 22. SIGNAGE TO BE MADE OF ALUMINUM
 23. SIGNAGE TO BE MADE OF ALUMINUM
 24. SIGNAGE TO BE MADE OF ALUMINUM
 25. SIGNAGE TO BE MADE OF ALUMINUM
 26. SIGNAGE TO BE MADE OF ALUMINUM
 27. SIGNAGE TO BE MADE OF ALUMINUM
 28. SIGNAGE TO BE MADE OF ALUMINUM
 29. SIGNAGE TO BE MADE OF ALUMINUM
 30. SIGNAGE TO BE MADE OF ALUMINUM
 31. SIGNAGE TO BE MADE OF ALUMINUM
 32. SIGNAGE TO BE MADE OF ALUMINUM
 33. SIGNAGE TO BE MADE OF ALUMINUM
 34. SIGNAGE TO BE MADE OF ALUMINUM
 35. SIGNAGE TO BE MADE OF ALUMINUM
 36. SIGNAGE TO BE MADE OF ALUMINUM
 37. SIGNAGE TO BE MADE OF ALUMINUM
 38. SIGNAGE TO BE MADE OF ALUMINUM
 39. SIGNAGE TO BE MADE OF ALUMINUM
 40. SIGNAGE TO BE MADE OF ALUMINUM
 41. SIGNAGE TO BE MADE OF ALUMINUM
 42. SIGNAGE TO BE MADE OF ALUMINUM
 43. SIGNAGE TO BE MADE OF ALUMINUM
 44. SIGNAGE TO BE MADE OF ALUMINUM
 45. SIGNAGE TO BE MADE OF ALUMINUM
 46. SIGNAGE TO BE MADE OF ALUMINUM
 47. SIGNAGE TO BE MADE OF ALUMINUM
 48. SIGNAGE TO BE MADE OF ALUMINUM
 49. SIGNAGE TO BE MADE OF ALUMINUM
 50. SIGNAGE TO BE MADE OF ALUMINUM
 51. SIGNAGE TO BE MADE OF ALUMINUM
 52. SIGNAGE TO BE MADE OF ALUMINUM
 53. SIGNAGE TO BE MADE OF ALUMINUM
 54. SIGNAGE TO BE MADE OF ALUMINUM
 55. SIGNAGE TO BE MADE OF ALUMINUM
 56. SIGNAGE TO BE MADE OF ALUMINUM
 57. SIGNAGE TO BE MADE OF ALUMINUM
 58. SIGNAGE TO BE MADE OF ALUMINUM
 59. SIGNAGE TO BE MADE OF ALUMINUM
 60. SIGNAGE TO BE MADE OF ALUMINUM
 61. SIGNAGE TO BE MADE OF ALUMINUM
 62. SIGNAGE TO BE MADE OF ALUMINUM
 63. SIGNAGE TO BE MADE OF ALUMINUM
 64. SIGNAGE TO BE MADE OF ALUMINUM
 65. SIGNAGE TO BE MADE OF ALUMINUM
 66. SIGNAGE TO BE MADE OF ALUMINUM
 67. SIGNAGE TO BE MADE OF ALUMINUM
 68. SIGNAGE TO BE MADE OF ALUMINUM
 69. SIGNAGE TO BE MADE OF ALUMINUM
 70. SIGNAGE TO BE MADE OF ALUMINUM
 71. SIGNAGE TO BE MADE OF ALUMINUM
 72. SIGNAGE TO BE MADE OF ALUMINUM
 73. SIGNAGE TO BE MADE OF ALUMINUM
 74. SIGNAGE TO BE MADE OF ALUMINUM
 75. SIGNAGE TO BE MADE OF ALUMINUM
 76. SIGNAGE TO BE MADE OF ALUMINUM
 77. SIGNAGE TO BE MADE OF ALUMINUM
 78. SIGNAGE TO BE MADE OF ALUMINUM
 79. SIGNAGE TO BE MADE OF ALUMINUM
 80. SIGNAGE TO BE MADE OF ALUMINUM
 81. SIGNAGE TO BE MADE OF ALUMINUM
 82. SIGNAGE TO BE MADE OF ALUMINUM
 83. SIGNAGE TO BE MADE OF ALUMINUM
 84. SIGNAGE TO BE MADE OF ALUMINUM
 85. SIGNAGE TO BE MADE OF ALUMINUM
 86. SIGNAGE TO BE MADE OF ALUMINUM
 87. SIGNAGE TO BE MADE OF ALUMINUM
 88. SIGNAGE TO BE MADE OF ALUMINUM
 89. SIGNAGE TO BE MADE OF ALUMINUM
 90. SIGNAGE TO BE MADE OF ALUMINUM
 91. SIGNAGE TO BE MADE OF ALUMINUM
 92. SIGNAGE TO BE MADE OF ALUMINUM
 93. SIGNAGE TO BE MADE OF ALUMINUM
 94. SIGNAGE TO BE MADE OF ALUMINUM
 95. SIGNAGE TO BE MADE OF ALUMINUM
 96. SIGNAGE TO BE MADE OF ALUMINUM
 97. SIGNAGE TO BE MADE OF ALUMINUM
 98. SIGNAGE TO BE MADE OF ALUMINUM
 99. SIGNAGE TO BE MADE OF ALUMINUM
 100. SIGNAGE TO BE MADE OF ALUMINUM

PROJECT DATA

TYPE	DATE	BY	REVISION
PROJECT DATA	11/11/2010	J. W. HARRIS	1

SQUARE FOOT AREA SUMMARY

DEPARTMENT	SQ. FT.	PERCENT	TOTAL	TOTAL
DEPT. 1	11,200	3.67%	11,200	11,200
DEPT. 2	70,276	22.97%	70,276	81,476
DEPT. 3	2,487	7.83%	2,487	83,963
DEPT. 4	300	0.93%	300	84,263
DEPT. 5	300	0.93%	300	84,563
DEPT. 6	300	0.93%	300	84,863
DEPT. 7	300	0.93%	300	85,163
DEPT. 8	300	0.93%	300	85,463
DEPT. 9	300	0.93%	300	85,763
DEPT. 10	300	0.93%	300	86,063
DEPT. 11	300	0.93%	300	86,363
DEPT. 12	300	0.93%	300	86,663
DEPT. 13	300	0.93%	300	86,963
DEPT. 14	300	0.93%	300	87,263
DEPT. 15	300	0.93%	300	87,563
DEPT. 16	300	0.93%	300	87,863
DEPT. 17	300	0.93%	300	88,163
DEPT. 18	300	0.93%	300	88,463
DEPT. 19	300	0.93%	300	88,763
DEPT. 20	300	0.93%	300	89,063
DEPT. 21	300	0.93%	300	89,363
DEPT. 22	300	0.93%	300	89,663
DEPT. 23	300	0.93%	300	89,963
DEPT. 24	300	0.93%	300	90,263
DEPT. 25	300	0.93%	300	90,563
DEPT. 26	300	0.93%	300	90,863
DEPT. 27	300	0.93%	300	91,163
DEPT. 28	300	0.93%	300	91,463
DEPT. 29	300	0.93%	300	91,763
DEPT. 30	300	0.93%	300	92,063
DEPT. 31	300	0.93%	300	92,363
DEPT. 32	300	0.93%	300	92,663
DEPT. 33	300	0.93%	300	92,963
DEPT. 34	300	0.93%	300	93,263
DEPT. 35	300	0.93%	300	93,563
DEPT. 36	300	0.93%	300	93,863
DEPT. 37	300	0.93%	300	94,163
DEPT. 38	300	0.93%	300	94,463
DEPT. 39	300	0.93%	300	94,763
DEPT. 40	300	0.93%	300	95,063
DEPT. 41	300	0.93%	300	95,363
DEPT. 42	300	0.93%	300	95,663
DEPT. 43	300	0.93%	300	95,963
DEPT. 44	300	0.93%	300	96,263
DEPT. 45	300	0.93%	300	96,563
DEPT. 46	300	0.93%	300	96,863
DEPT. 47	300	0.93%	300	97,163
DEPT. 48	300	0.93%	300	97,463
DEPT. 49	300	0.93%	300	97,763
DEPT. 50	300	0.93%	300	98,063
DEPT. 51	300	0.93%	300	98,363
DEPT. 52	300	0.93%	300	98,663
DEPT. 53	300	0.93%	300	98,963
DEPT. 54	300	0.93%	300	99,263
DEPT. 55	300	0.93%	300	99,563
DEPT. 56	300	0.93%	300	99,863
DEPT. 57	300	0.93%	300	100,163
DEPT. 58	300	0.93%	300	100,463
DEPT. 59	300	0.93%	300	100,763
DEPT. 60	300	0.93%	300	101,063
DEPT. 61	300	0.93%	300	101,363
DEPT. 62	300	0.93%	300	101,663
DEPT. 63	300	0.93%	300	101,963
DEPT. 64	300	0.93%	300	102,263
DEPT. 65	300	0.93%	300	102,563
DEPT. 66	300	0.93%	300	102,863
DEPT. 67	300	0.93%	300	103,163
DEPT. 68	300	0.93%	300	103,463
DEPT. 69	300	0.93%	300	103,763
DEPT. 70	300	0.93%	300	104,063
DEPT. 71	300	0.93%	300	104,363
DEPT. 72	300	0.93%	300	104,663
DEPT. 73	300	0.93%	300	104,963
DEPT. 74	300	0.93%	300	105,263
DEPT. 75	300	0.93%	300	105,563
DEPT. 76	300	0.93%	300	105,863
DEPT. 77	300	0.93%	300	106,163
DEPT. 78	300	0.93%	300	106,463
DEPT. 79	300	0.93%	300	106,763
DEPT. 80	300	0.93%	300	107,063
DEPT. 81	300	0.93%	300	107,363
DEPT. 82	300	0.93%	300	107,663
DEPT. 83	300	0.93%	300	107,963
DEPT. 84	300	0.93%	300	108,263
DEPT. 85	300	0.93%	300	108,563
DEPT. 86	300	0.93%	300	108,863
DEPT. 87	300	0.93%	300	109,163
DEPT. 88	300	0.93%	300	109,463
DEPT. 89	300	0.93%	300	109,763
DEPT. 90	300	0.93%	300	110,063
DEPT. 91	300	0.93%	300	110,363
DEPT. 92	300	0.93%	300	110,663
DEPT. 93	300	0.93%	300	110,963
DEPT. 94	300	0.93%	300	111,263
DEPT. 95	300	0.93%	300	111,563
DEPT. 96	300	0.93%	300	111,863
DEPT. 97	300	0.93%	300	112,163
DEPT. 98	300	0.93%	300	112,463
DEPT. 99	300	0.93%	300	112,763
DEPT. 100	300	0.93%	300	113,063

FIXTURE MANUFACTURER

SECTION	MANUFACTURER	LOCATION
100-52	WALGREENS	100-52



J. W. HARRIS ARCHITECTS
 100-52 WALGREENS
 100-52 WALGREENS

Walgreens
 STORE #2230
 5420 9TH ST. N.
 ST. PETERSBURG, FL 33716

SECTION	DATE	BY	REVISION
100-52	11/11/2010	J. W. HARRIS	1

FIXTURE PLAN
 D-111

Executive Summary

5420 Dr M.L.K. Jr St N | Saint Petersburg, FL



	1 mile	3 miles	5 miles
Population			
2019 Population	15,865	112,966	244,985
2000 Population	15,484	110,422	224,804
2010 Population	15,166	108,213	226,535
2024 Population	16,307	115,896	255,508
2000-2010 Annual Rate	-0.21%	-0.20%	0.08%
2010-2019 Population: Annual Growth Rate	0.49%	0.47%	0.85%
2019-2024 Population: Annual Growth Rate	0.55%	0.51%	0.84%
2019 Median Age	45.9	45.7	43.7
Households			
2000 Households	7,368	50,462	101,797
2010 Households	7,146	49,336	101,969
2019 Total Households	7,361	50,805	109,394
2024 Total Households	7,540	51,962	114,155
2000-2010 Annual Rate	-0.31%	-0.23%	0.02%
2010-2019 Households: Annual Growth Rate	0.32%	0.32%	0.76%
2019-2024 Households: Annual Growth Rate	0.48%	0.45%	0.86%
2019 Average Household Size	2.14	2.20	2.19
Housing Units			
2019 Total Housing Units	8,613	58,540	126,202
2019 Owner Occupied Housing Units	5,387	32,792	63,737
2019 Renter Occupied Housing Units	1,975	18,013	45,657
2019 Vacant Housing Units	1,252	7,735	16,808
Race and Ethnicity			
2019 White Alone	84.9%	81.6%	74.0%
2019 Black Alone	5.0%	6.8%	14.5%
2019 American Indian/Alaska Native Alone	0.3%	0.3%	0.3%
2019 Asian Alone	4.8%	5.8%	5.5%
2019 Pacific Islander Alone	0.1%	0.1%	0.1%
2019 Hispanic Origin (Any Race)	8.9%	10.0%	10.6%
Income			
2019 Median Household Income	\$54,297	\$53,529	\$51,281
2019 Average Household Income	\$71,092	\$77,276	\$71,796
Per Capita Income	\$31,867	\$34,765	\$32,032
2019 Population 25+ by Educational Attainment			
Total	12,156	85,557	183,002
High School Graduate	23.7%	21.9%	23.3%
GED/Alternative Credential	5.9%	5.0%	5.2%
Some College, No Degree	21.9%	19.6%	19.9%
Associate Degree	10.9%	9.7%	10.5%
Bachelor's Degree	17.9%	21.1%	19.8%
Graduate/Professional Degree	9.1%	12.6%	11.2%
Data for all businesses in area			
Total Businesses:	495	4,195	11,281
Total Employees:	4,054	51,916	140,777
Total Residential Population:	15,865	112,966	244,985
Employee/Residential Population Ratio:	0.26:1	0.46:1	0.57:1
2019 Total Daytime Population	11,864	101,466	267,398
Workers	4,165	45,230	143,855
Residents	7,699	56,236	123,543

Source: Esri, Esri and Infogroup, U.S. Census