

AVAILABLE

Retail Space Available at Curry Ford Plaza

2904 Curry Ford Road | Orlando, FL



Overview

LEASE RATE Contact Broker

AVAILABLE SF 3,000 SF



Description

- Former Gym
- Excellent visibility on Curry Ford Rd
- Ideal for small space restaurant and food hall users
- Significant parking
- Monument and store frontage signage available
- Shopping Center currently undergoing renovations
- Located in the Curry Ford District

Nearby Retailers



Demographics

	1 MILE	3 MILES	5 MILES
Total Population	14,938	125,606	309,647
2024 Growth	0.89%	1.55%	1.61%
Median HH Income	\$50,560	\$51,327	\$47,930
Daytime Population	9,371	218,668	419,242

Year: 2019 | Source: ESRI

Contact

MICHELE SWOPE

407.563.6124 | michele.swope@srsre.com

Traffic Counts

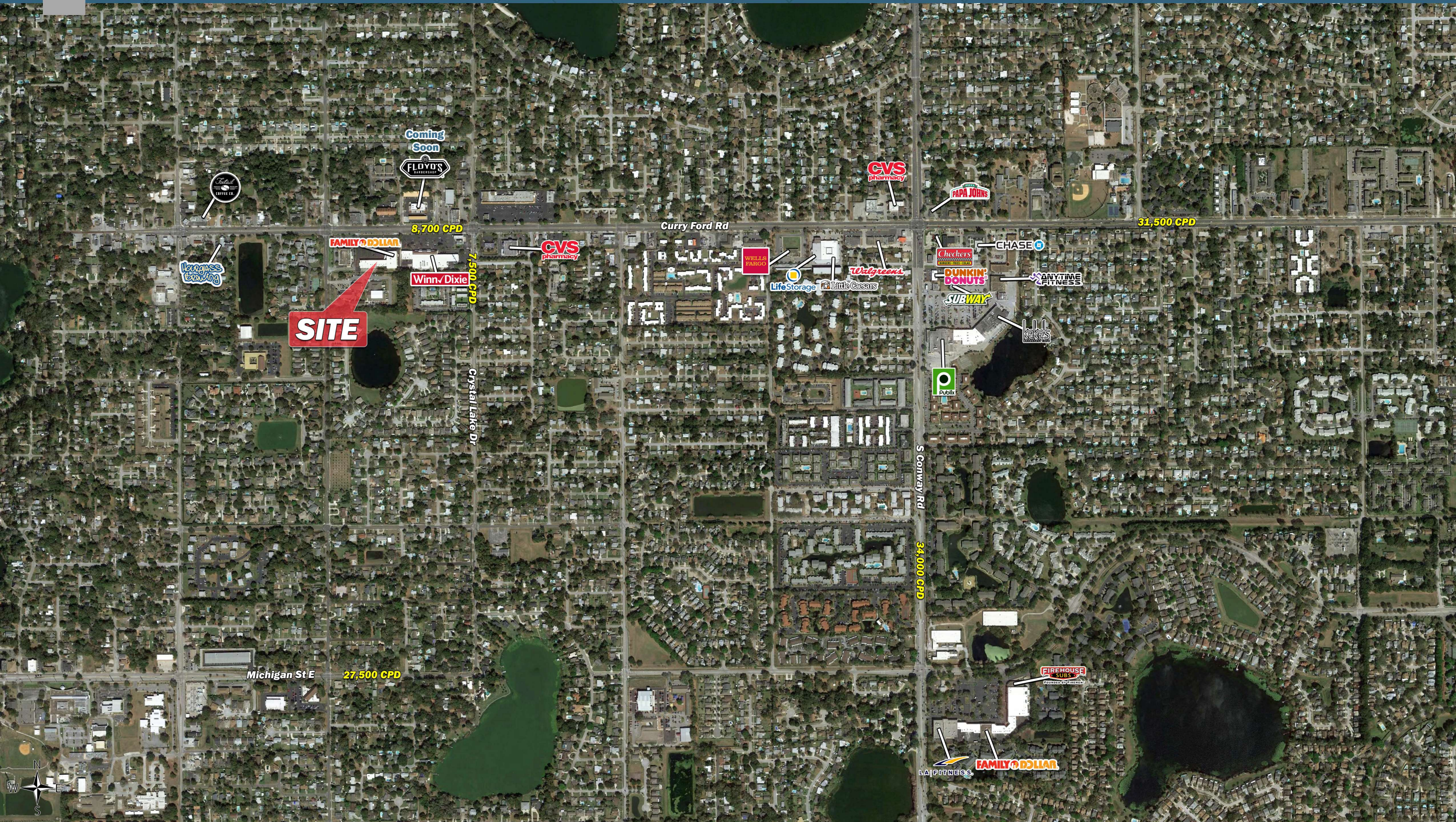
Curry Ford Rd	8,700 VPD
S Crystal Lake Dr	7,500 VPD

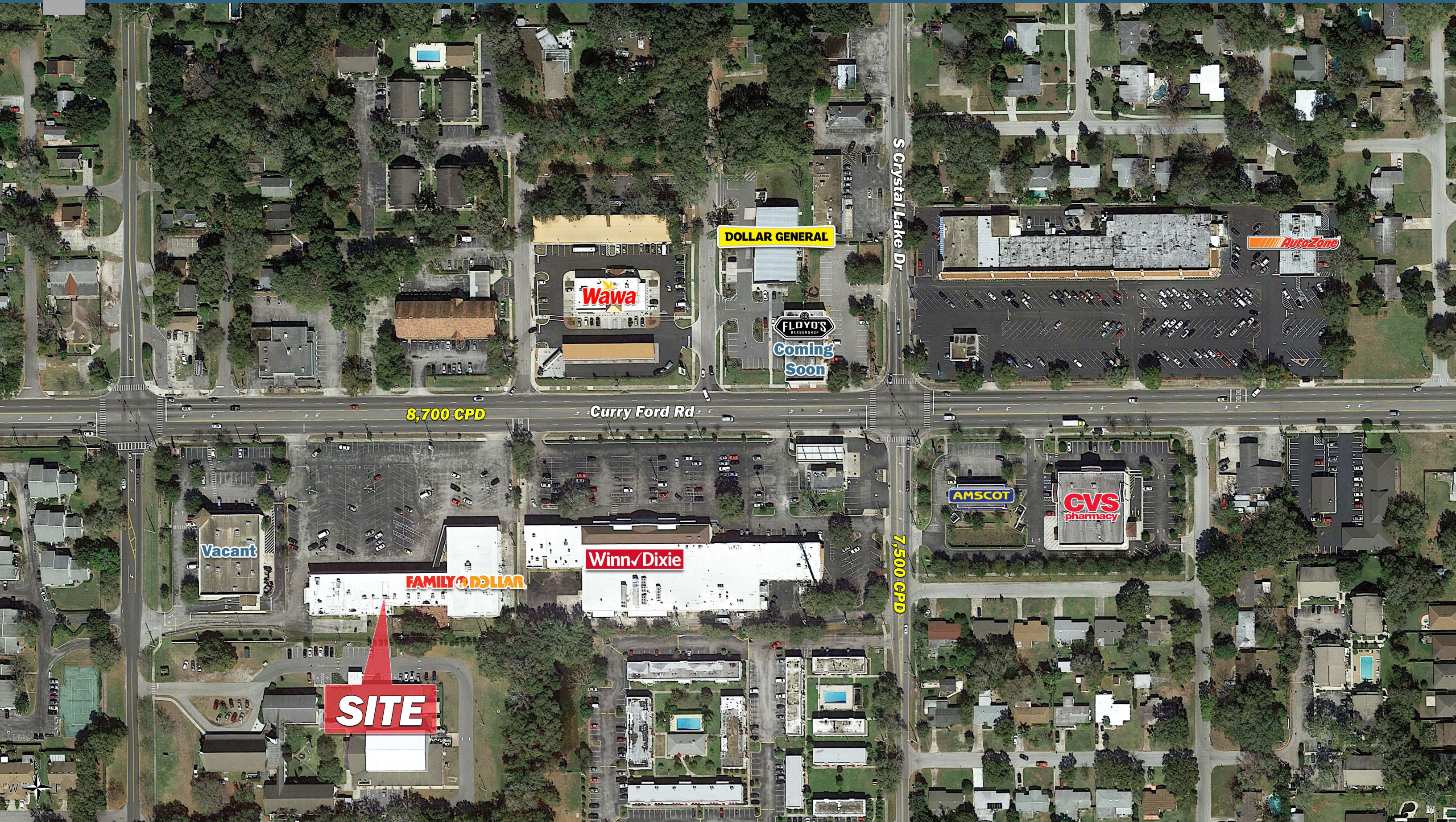
Year: 2019 | Source: FDOT

SRS REAL ESTATE PARTNERS | 200 S Orange Avenue, Suite 1300 | Orlando, FL 32801 | 407.455.5030

This information contained herein was obtained from sources deemed to be reliable; however SRS Real Estate Partners makes no guarantees, warranties or representations as to the completeness or accuracy thereof.

SRSRE.COM





Retail Space Available at Curry Ford Plaza

2904 Curry Ford Road | Orlando, FL



Executive Summary

2904 Curry Ford Road | Orlando, FL



	1 mile	3 miles	5 miles
Population			
2019 Population	16,733	124,987	312,919
2000 Population	16,731	111,823	267,423
2010 Population	15,273	111,372	281,312
2024 Population	17,515	134,781	338,987
2000-2010 Annual Rate	-0.91%	-0.04%	0.51%
2010-2018 Population: Annual Growth Rate	0.99%	1.25%	1.16%
2018-2023 Population: Annual Growth Rate	0.92%	1.52%	1.61%
2019 Median Age	39.3	38.8	36.9
Households			
2000 Households	7,558	49,498	108,867
2010 Households	7,045	50,794	116,309
2019 Total Households	7,643	57,172	129,428
2024 Total Households	7,968	61,867	140,655
2000-2010 Annual Rate	-0.70%	0.26%	0.66%
2010-2018 Households: Annual Growth Rate	0.88%	1.29%	1.16%
2018-2023 Households: Annual Growth Rate	0.84%	1.59%	1.68%
2019 Average Household Size	2.18	2.15	2.35
Housing Units			
2019 Total Housing Units	8,479	64,326	145,341
2019 Owner Occupied Housing Units	3,454	24,325	57,256
2019 Renter Occupied Housing Units	4,188	32,847	72,172
2019 Vacant Housing Units	836	7,154	15,913
Race and Ethnicity			
2019 White Alone	75.1%	72.4%	64.6%
2019 Black Alone	10.0%	12.0%	19.6%
2019 American Indian/Alaska Native Alone	0.5%	0.4%	0.5%
2019 Asian Alone	2.1%	2.9%	3.1%
2019 Pacific Islander Alone	0.1%	0.1%	0.1%
2019 Hispanic Origin (Any Race)	30.7%	33.6%	35.7%
Income			
2019 Median Household Income	\$48,450	\$51,388	\$48,107
2019 Average Household Income	\$66,564	\$74,767	\$73,770
Per Capita Income	\$30,491	\$34,218	\$30,700
2019 Population 25+ by Educational Attainment			
Total	12,328	93,201	221,672
High School Graduate	24.1%	21.6%	23.2%
GED/Alternative Credential	3.7%	3.3%	3.8%
Some College, No Degree	19.6%	17.9%	17.5%
Associate Degree	10.8%	11.1%	10.6%
Bachelor's Degree	24.7%	25.1%	22.0%
Graduate/Professional Degree	10.7%	12.5%	11.5%
Data for all businesses in area			
Total Businesses:	539	9,985	19,256
Total Employees:	2,797	138,962	241,037
Total Residential Population:	16,733	124,987	312,919
Employee/Residential Population Ratio:	0.17:1	1.11:1	0.77:1
2019 Total Daytime Population	10,218	213,924	418,702
Workers	3,179	159,138	271,289
Residents	7,039	54,786	147,413

Source: Esri, Esri and Infogroup, U.S. Census

October 07, 2019