

FOR LEASE

## AVAILABLE SOUTH COAST RESTAURANT PAD

3420 S BRISTOL STREET, SANTA ANA, CA 92704

**CORELAND**  
COMPANIES



### PROPERTY DESCRIPTION

Freestanding 5,900 SF Restaurant Pad within OC's South Coast Plaza Trade Area.

### PROPERTY HIGHLIGHTS

- Trade area features strong mix of daytime population and residential density.
- Surrounding average annual household income of approximately \$101,000.
- S Bristol Street and W. MacArthur Blvd. see over 70,000 VPD.

### DEMOGRAPHICS

	3 MILES	2 MILES	1 MILE
Total Households	58,989	27,779	10,346
Total Population	229,899	100,513	33,888
Average HH Income	\$78,405	\$81,202	\$81,404



**MATT HAMMOND**

714.210.6711  
mhammond@coreland.com  
LIC #01235239

**TIM MULLER**

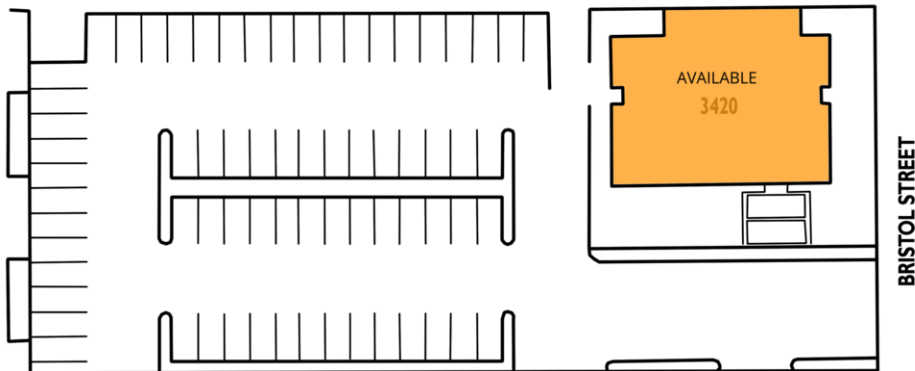
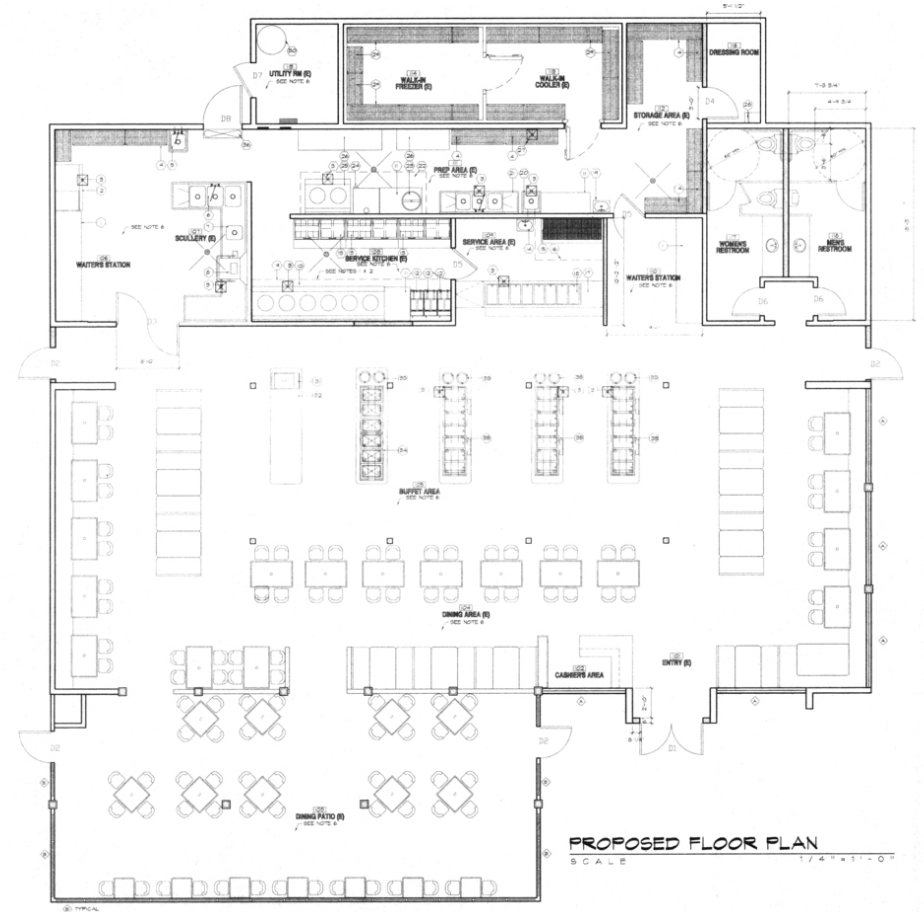
714.210.6724  
tmuller@coreland.com  
LIC #01786175

The information contained herein has been obtained from sources we deem reliable, however no warranty or representation is made to the accuracy of the information. Terms of lease or availability are subject to change or withdrawal without notice.

FOR LEASE

# 3420 S BRISTOL STREET

3420 S BRISTOL STREET, SANTA ANA, CA 92704





FOR LEASE

# 3420 S BRISTOL STREET

3420 S BRISTOL STREET, SANTA ANA, CA 92704

## POPULATION

	3 MILES	2 MILES	1 MILE
Total Population	229,899	100,513	33,888
Average age	29.8	30.8	31.6
Average age (Male)	29.8	30.8	31.9
Average age (Female)	29.7	30.7	30.8

## HOUSEHOLDS & INCOME

	3 MILES	2 MILES	1 MILE
Total households	58,989	27,779	10,346
# of persons per HH	3.9	3.6	3.3
Average HH income	\$78,405	\$81,202	\$81,404
Average house value	\$495,004	\$484,760	\$492,479

\* Demographic data derived from 2010 US Census

