

FOR LEASE

Former Walgreens - Bennettsville, SC

1146 Cheraw St | Bennettsville, SC



Overview

BUILDING SIZE	14,820 SF
LEASE END DATE	4/30/2032
RATE	\$8.00 SF/yr (MG)



Description

Site located on lighted corner with great accessibility.

Adjacent to McLeod Health Bennettsville, the primary medical office park for the city.

Located along the Highway 9 corridor, linking Bennettsville with North Carolina.

Demographics

	3 MILES	5 MILES	10 MILES
Median HH Income	\$30,802	\$30,913	\$30,368
Average HH Income	\$42,857	\$43,037	\$43,143
Households	4,166	4,764	9,041
Current Population	13,180	14,746	25,392

Year: 2017 | Source: ESRI

Contact

SCOTT TIERNAN

678.420.1385 | scott.tiernan@srsre.com

BRICE POLITO

404.231.9631 | brice.polito@srsre.com

Traffic Counts

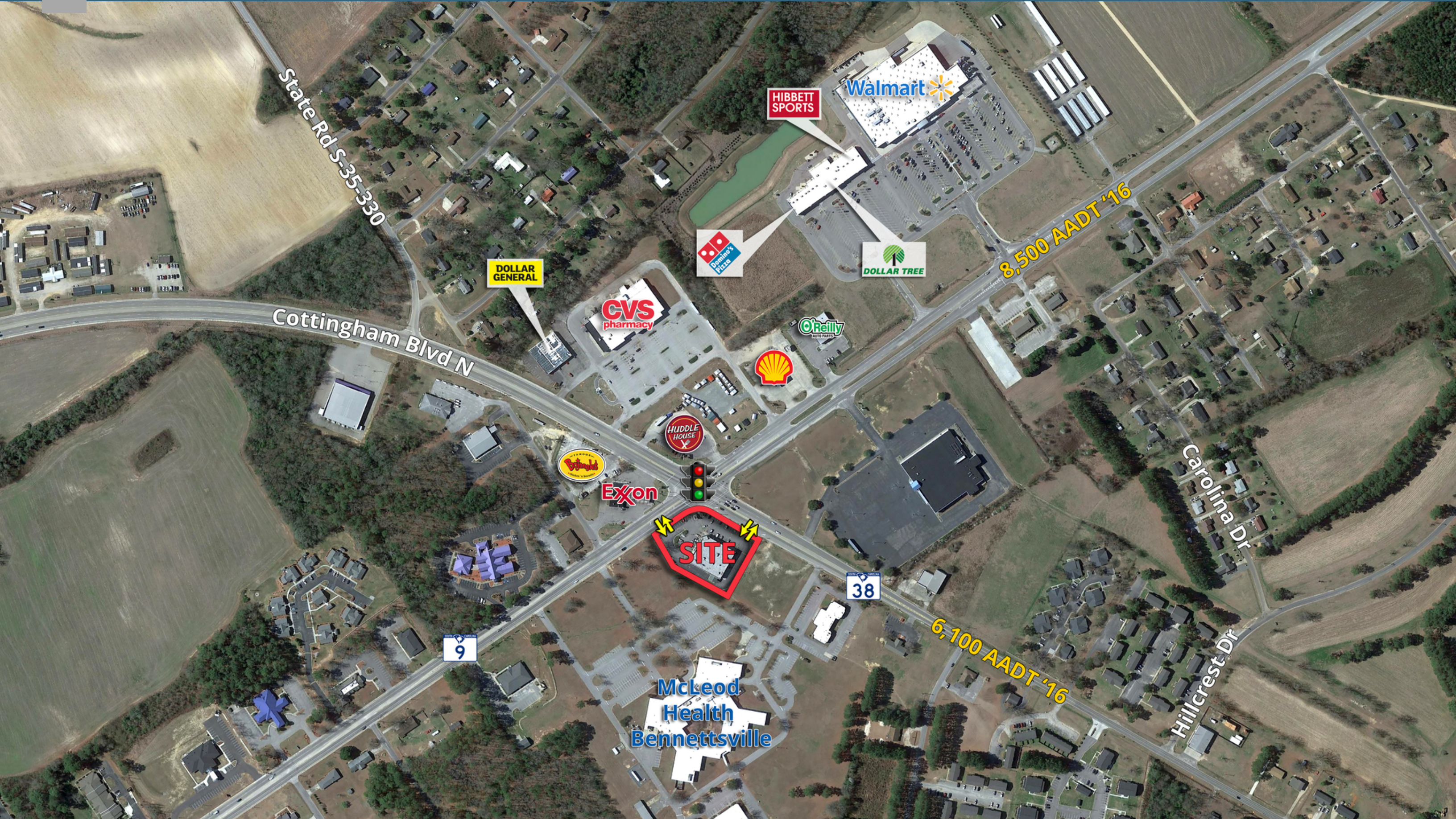
Cheraw Hwy	8,500 VPD
Oakwood St	6,100 VPD

Year: 2017 | Source: SCDOT

SRS REAL ESTATE PARTNERS | 3445 Peachtree Road NE, Suite 950 | Atlanta, GA 30326 | 404.231.2232

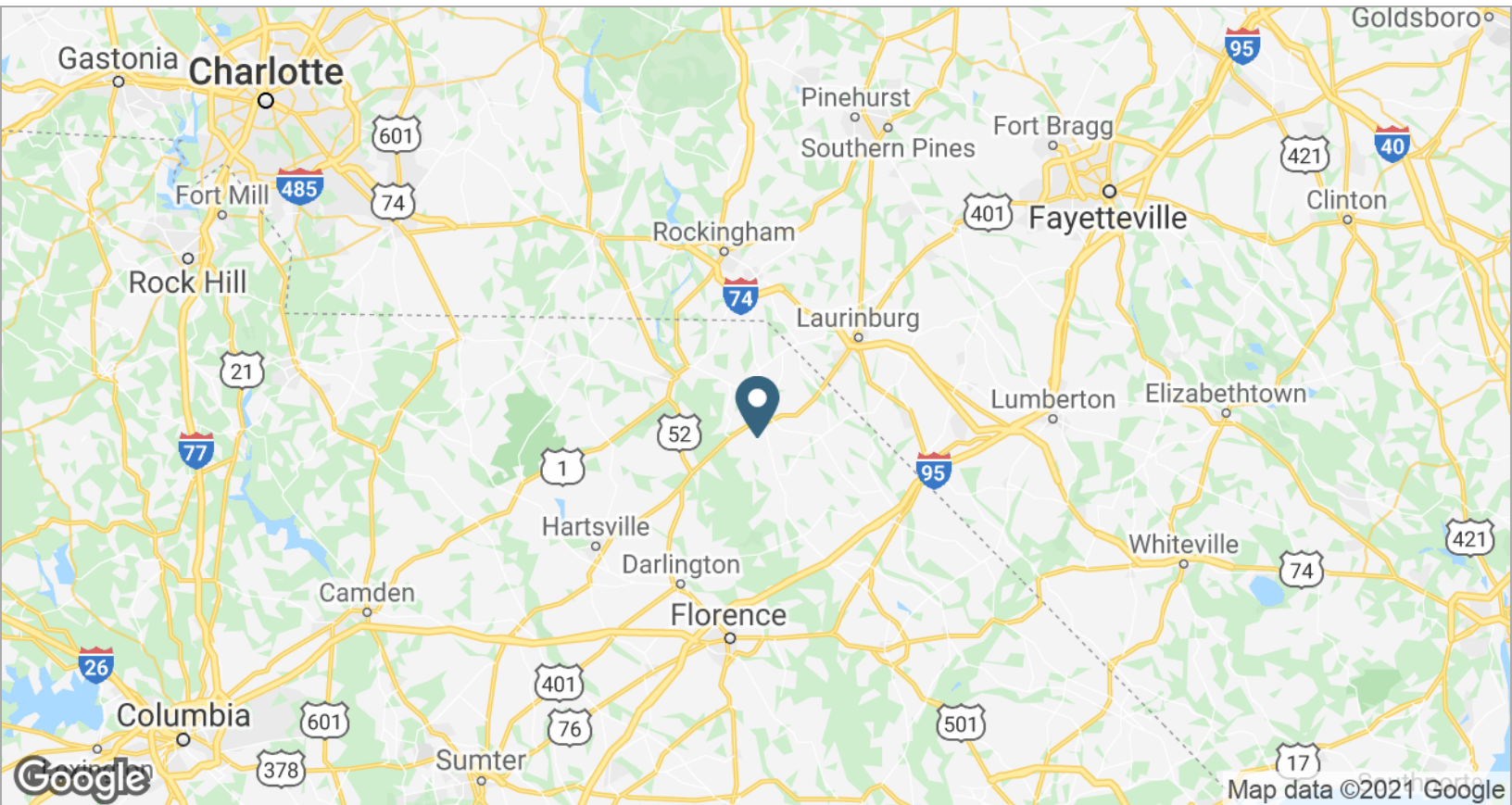
This information contained herein was obtained from sources deemed to be reliable; however SRS Real Estate Partners makes no guarantees, warranties or representations as to the completeness or accuracy thereof.

SRSRE.COM



Former Walgreens - Bennettsville, SC

1146 Cheraw St | Bennettsville, SC



Former Walgreens - Bennettsville, SC

1146 Cheraw St | Bennettsville, SC



	3 miles	5 miles	10 miles
Population			
2017 Population	13,180	14,746	25,392
2000 Population	13,398	14,925	26,063
2010 Population	13,782	15,390	26,224
2022 Population	12,678	14,186	24,488
2000-2010 Annual Rate	0.28%	0.31%	0.06%
2010-2016 Annual Rate	-0.61%	-0.59%	-0.44%
2016-2021 Annual Rate	-0.77%	-0.77%	-0.72%
2017 Median Age	37.9	38.2	39.6
Households			
2000 Households	4,645	5,227	9,442
2010 Households	4,376	4,986	9,312
2017 Total Households	4,166	4,764	9,041
2022 Total Households	3,970	4,548	8,697
2000-2010 Annual Rate	-0.59%	-0.47%	-0.14%
2010-2016 Annual Rate	-0.68%	-0.63%	-0.41%
2016-2021 Annual Rate	-0.96%	-0.92%	-0.77%
2017 Average Household Size	2.44	2.42	2.45
Housing Units			
2017 Total Housing Units	5,061	5,774	10,741
2017 Owner Occupied Housing Units	2,404	2,825	5,828
2017 Renter Occupied Housing Units	1,762	1,939	3,213
2017 Vacant Housing Units	895	1,010	1,700
Race and Ethnicity			
2017 White Alone	32.1%	32.7%	40.2%
2017 Black Alone	61.6%	60.9%	51.1%
2017 American Indian/Alaska Native Alone	1.2%	1.4%	4.3%
2017 Asian Alone	0.8%	0.8%	0.6%
2017 Pacific Islander Alone	0.0%	0.0%	0.0%
2017 Hispanic Origin (Any Race)	5.4%	5.3%	3.6%
Income			
2017 Median Household Income	\$30,802	\$30,913	\$30,368
2017 Average Household Income	\$42,857	\$43,037	\$43,143
Per Capita Income	\$16,215	\$16,251	\$16,747
2017 Population 25+ by Educational Attainment			
Total	9,703	10,842	18,388
High School Graduate	32.0%	31.9%	33.6%
GED/Alternative Credential	7.9%	7.9%	7.2%
Some College, No Degree	18.1%	18.2%	18.0%
Associate Degree	5.5%	5.6%	7.2%
Bachelor's Degree	6.4%	6.3%	6.2%
Graduate/Professional Degree	3.3%	3.3%	3.0%
Data for all businesses in area			
Total Businesses:	515	548	744
Total Employees:	5,561	6,303	8,559
Total Residential Population:	13,180	14,746	25,392
Employee/Residential Population Ratio:	0.42:1	0.43:1	0.34:1
2017 Total Daytime Population	11,954	13,303	22,163
Workers	5,038	5,361	7,423
Residents	6,916	7,942	14,740