

Additional Parking

31,818 CPD

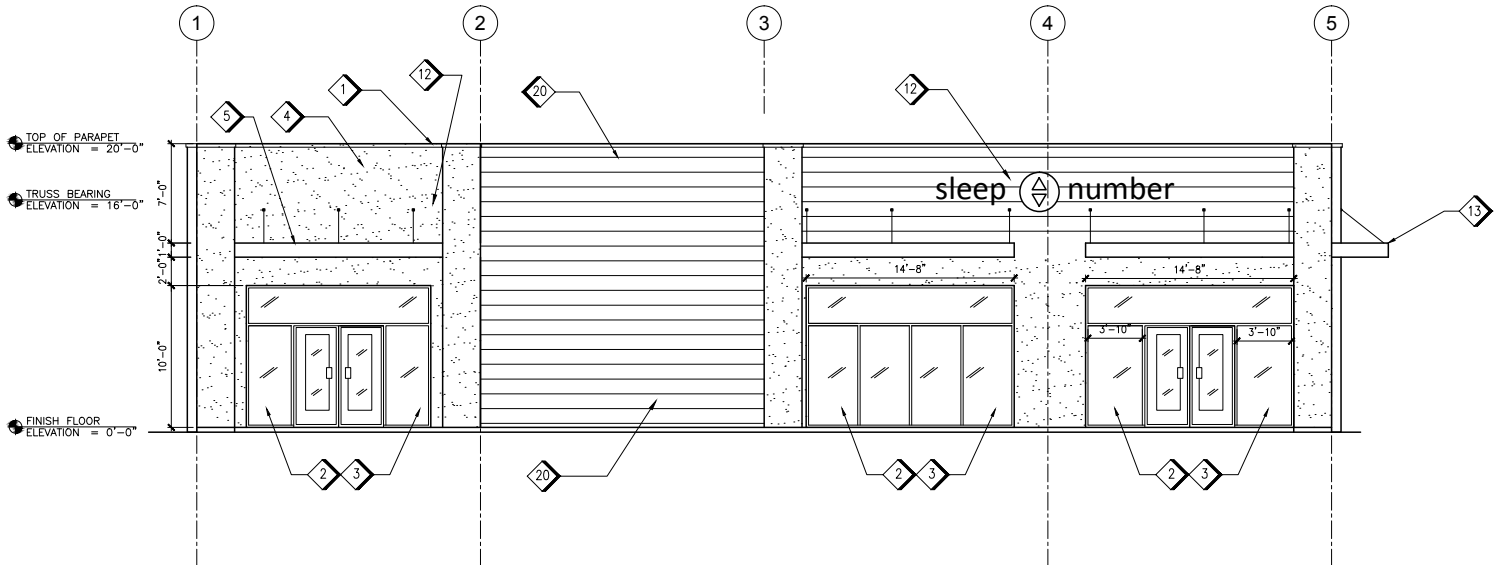
N Orlando Ave

W Morse Blvd

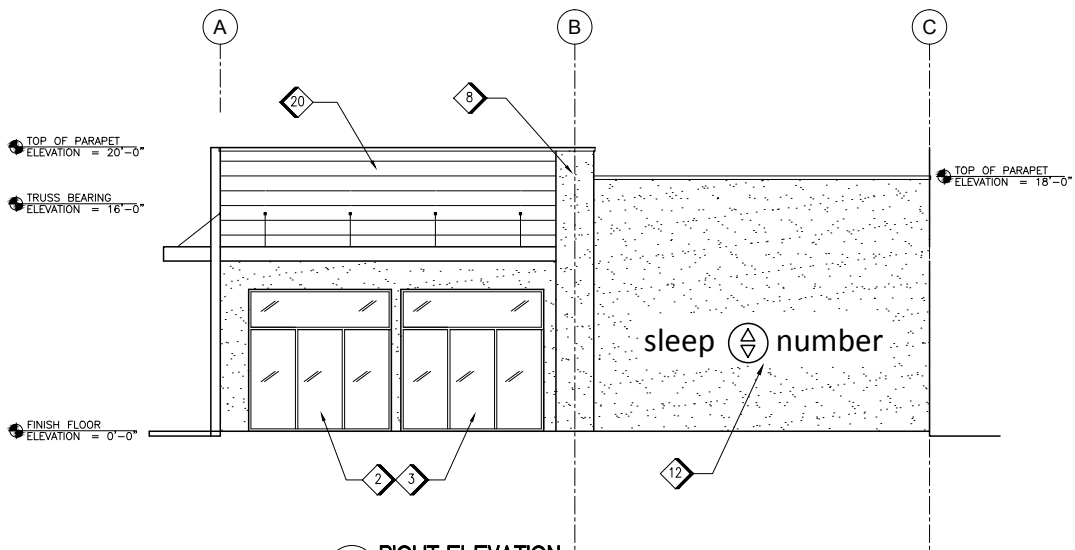


Space Available

200 N Orlando Ave | Winter Park, FL 32789



1 FRONT ELEVATION
SCALE: 3/16"=1'-0"



2 RIGHT ELEVATION
SCALE: 3/16"=1'-0"

	1 mile	3 miles	5 miles
Population			
2000 Population	9,342	72,034	233,906
2010 Population	8,722	71,724	237,878
2016 Population	9,621	78,358	258,296
2021 Population	10,571	85,206	278,215
2000-2010 Annual Rate	-0.68%	-0.04%	0.17%
2010-2016 Annual Rate	1.58%	1.43%	1.33%
2016-2021 Annual Rate	1.90%	1.69%	1.50%
2016 Male Population	47.8%	48.7%	49.4%
2016 Female Population	52.2%	51.3%	50.6%
2016 Median Age	44.4	42.2	37.6
Households			
2000 Households	4,633	31,538	101,851
2010 Households	4,498	31,880	106,353
2016 Total Households	4,895	34,457	114,130
2021 Total Households	5,349	37,336	122,554
2000-2010 Annual Rate	-0.30%	0.11%	0.43%
2010-2016 Annual Rate	1.36%	1.25%	1.14%
2016-2021 Annual Rate	1.79%	1.62%	1.43%
2016 Average Household Size	1.93	2.21	2.21
Housing Units			
2016 Total Housing Units	5,743	39,096	130,847
2016 Owner Occupied Housing Units	1,955	19,608	50,760
2016 Renter Occupied Housing Units	2,940	14,849	63,370
2016 Vacant Housing Units	848	4,639	16,717
Race and Ethnicity			
2016 White Alone	70.6%	80.9%	69.5%
2016 Black Alone	21.3%	10.9%	18.6%
2016 American Indian/Alaska Native Alone	0.2%	0.3%	0.4%
2016 Asian Alone	2.5%	3.3%	3.4%
2016 Pacific Islander Alone	0.0%	0.0%	0.1%
2016 Hispanic Origin (Any Race)	10.9%	10.8%	19.5%
Income			
2016 Median Household Income	\$41,688	\$60,275	\$47,507
2016 Average	\$64,852	\$95,638	\$73,049
Per Capita Income	\$33,377	\$43,022	\$32,871
2016 Population 25+ by Educational Attainment			
Total	7,311	57,099	182,881
High School Graduate	18.2%	15.1%	19.4%
GED/Alternative Credential	3.9%	2.4%	3.7%
Some College, No Degree	18.7%	17.4%	19.4%
Associate Degree	9.2%	9.0%	10.7%
Bachelor's Degree	24.7%	30.7%	24.6%
Graduate/Professional Degree	16.1%	20.4%	14.4%
Data for all businesses in area			
Total Businesses:	2,582	7,259	21,724
Total Employees:	24,476	95,513	285,906
Total Residential Population:	9,621	78,358	258,296
Employee/Residential Population Ratio:	2.54:1	1.22:1	1.11:1