

# JUNIOR ANCHOR RETAIL POSITION FOR LEASE

## BROMLEY SHOPPING CENTER

6200-6206 N MILITARY HWY, NORFOLK, VA 23518



*Brokerage with vision. Real estate with results.*

*Presented By:*

**Brian C. Baker**  
Commercial Sales & Leasing  
757.490.3585 x115  
brian@katsias.com

3720 Virginia Beach Blvd Suite 200, Virginia Beach, VA 23452 | 757.490.3585 x115 | [www.katsias.com](http://www.katsias.com)

# BROMLEY SHOPPING CENTER

6200-6206 N MILITARY HWY, NORFOLK, VA 23518

## EXECUTIVE SUMMARY



### OFFERING SUMMARY

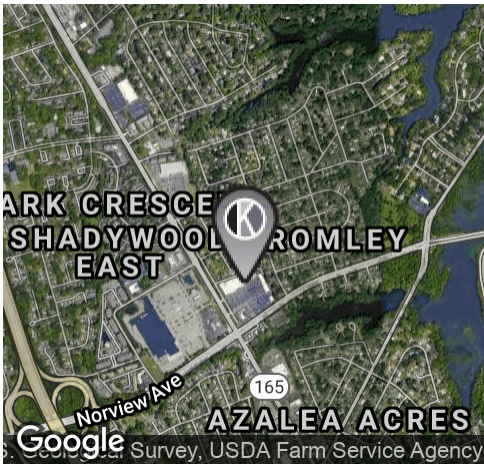
**Available SF:** 8,450 SF

**Lease Rate:** NEGOTIABLE (NNN)

**Building Size:** 64,350 SF

### PROPERTY HIGHLIGHTS

- Junior Anchor position next door to Food Lion: 6204H
- Very close access to I-64
- Prime access to the Norfolk International Airport, Norfolk Premium Outlets, and the newly opened IKEA store.
- Located at the intersection of N Military Highway and Norview Ave
- Anchored by Food Lion, Rent-A-Center and Wendy's out parcel
- Traffic Count: 64,000
- Ample Parking



DEMOGRAPHICS	1 Mile	3 Miles	5 Miles
Total Households:	5,915	41,671	99,972
Total Population:	16,538	114,814	272,848
Average HH Income:	\$53,634	\$54,589	\$56,882



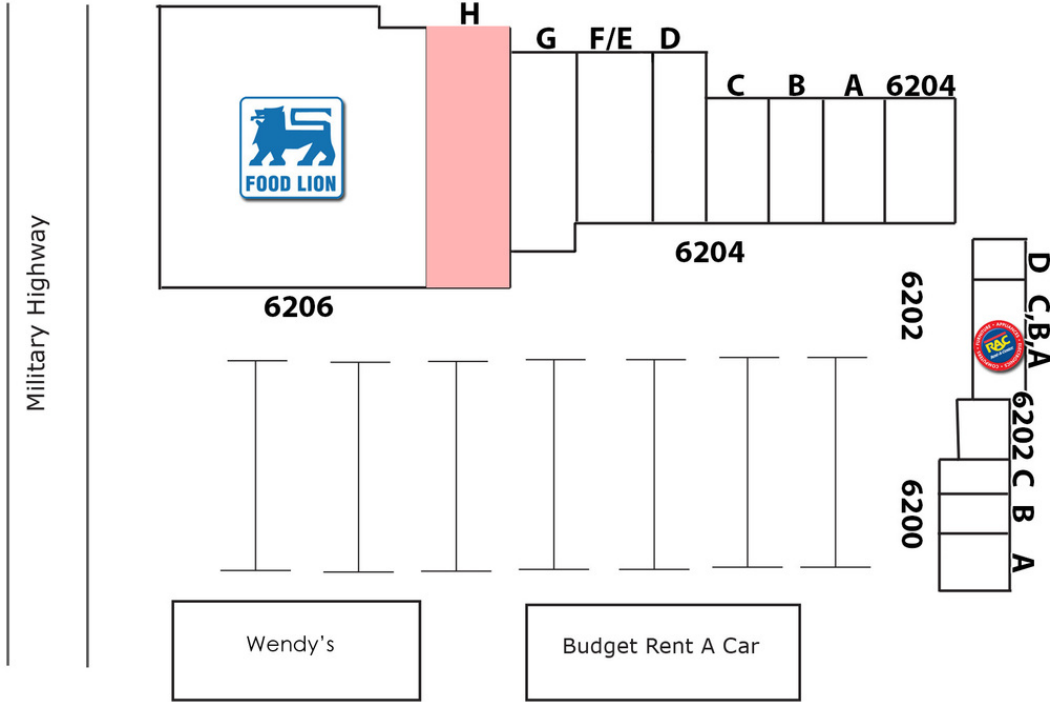
*Presented By:*  
**Brian C. Baker | Commercial Sales & Leasing**  
 757.490.3585 x115  
 brian@katsias.com

3720 Virginia Beach Blvd suite 200, Virginia Beach, VA 23452 | 757.490.3585 x115 | [www.katsias.com](http://www.katsias.com)

# BROMLEY SHOPPING CENTER

6200-6206 N MILITARY HWY, NORFOLK, VA 23518

**AVAILABLE SPACES**



SPACE	LEASE RATE	SIZE (SF)
6204H	NEGOTIABLE(NNN)	8,450 SF

RETAIL PROPERTY FOR LEASE

# BROMLEY SHOPPING CENTER

6200-6206 N MILITARY HWY, NORFOLK, VA 23518

## RETAILER MAP



 **The KATSIAS  
COMPANY**  
*Brokerage with vision. Real estate with results.*

*Presented By:*  
**Brian C. Baker | Commercial Sales & Leasing**  
757.490.3585 x115  
brian@katsias.com

3720 Virginia Beach Blvd suite 200, Virginia Beach, VA 23452 | 757.490.3585 x115 | [www.katsias.com](http://www.katsias.com)

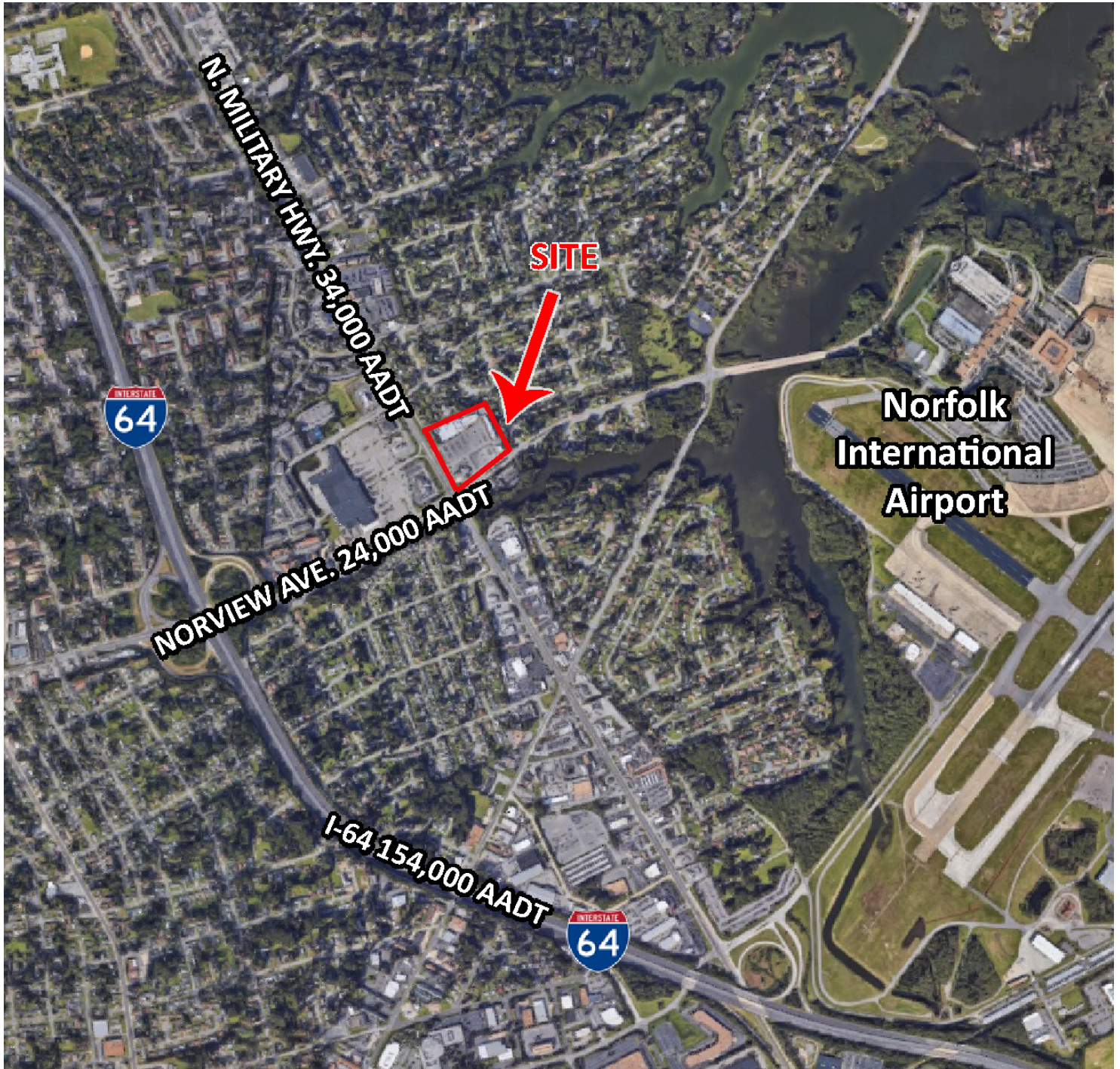
We have in preparing this information used our best endeavors to ensure that the information contained herein in true and accurate, but accept no responsibility and disclaim all liability in respect of any errors, inaccuracies or misstatements contained herein. Prospective purchasers and/or lessors should make their own inquiries to verify the information contained herein.

RETAIL PROPERTY FOR LEASE

# BROMLEY SHOPPING CENTER

6200-6206 N MILITARY HWY, NORFOLK, VA 23518

RETAILER MAP



*Brokerage with vision. Real estate with results.*

Presented By:

**Brian C. Baker | Commercial Sales & Leasing**

757.490.3585 x115

brian@katsias.com

3720 Virginia Beach Blvd suite 200, Virginia Beach, VA 23452 | 757.490.3585 x115 | [www.katsias.com](http://www.katsias.com)

We have in preparing this information used our best endeavors to ensure that the information contained herein in true and accurate, but accept no responsibility and disclaim all liability in respect of any errors, inaccuracies or misstatements contained herein. Prospective purchasers and/or lessors should make their own inquiries to verify the information contained herein.