

FOR SALE

4th Street Restaurant

8123 4th St. N. | Saint Petersburg, FL



BACK ON THE MARKET

Overview

BUILDING SIZE	4,157 SF
LOT SIZE	.60 AC 100' D x 260' W
SALE PRICE	\$1,400,000



Description

- Second generation restaurant on 4th Street in desirable north Saint Petersburg, adjacent to Target, Publix and multiple residential neighborhoods
- Fully furnished with equipment available upon request
- High-traffic, dense population and great visibility
- Minutes to Downtown Saint Petersburg

Nearby Retailers



Demographics

	1 MILE	3 MILES	5 MILES
Total Population	15,233	84,189	186,293
2025 Growth	0.25%	0.75%	0.78%
Average HH Income	\$71,389	\$74,277	\$75,901
Daytime Population	14,086	81,560	199,409

Year: 2020 | Source: ESRI

Contact

DANIEL EARLES

813.995.7503 | daniel.earles@srsre.com

MARK SNEED, CCIM, CRX, CLS

813.371.1080 | mark.sneed@srsre.com

Traffic Counts

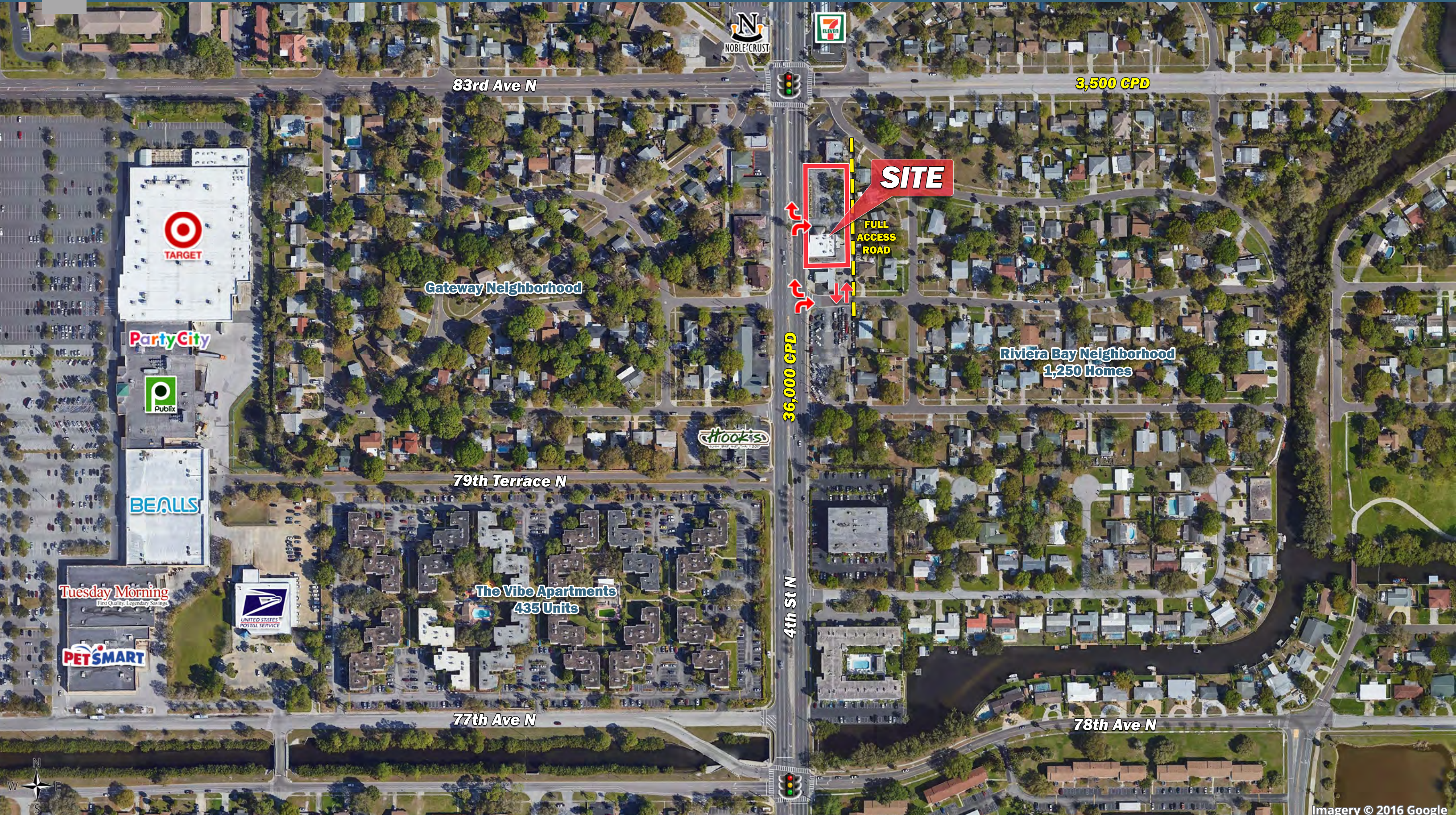
4th St. N.	36,000 VPD
Dr MLK Jr St. N.	25,500 VPD
Gandy Blvd.	55,000 VPD

Year: 2019 | Source: FDOT

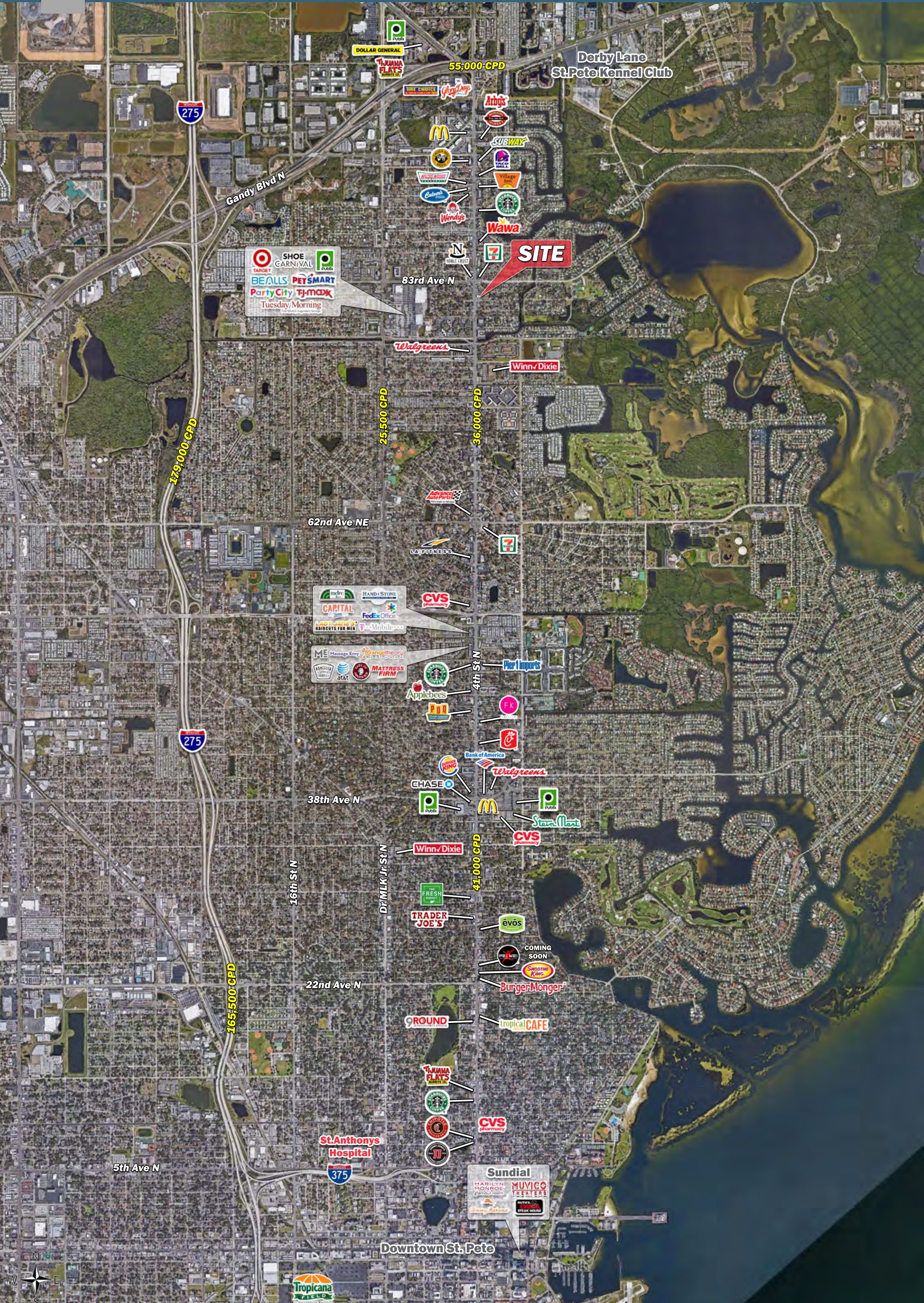
SRS REAL ESTATE PARTNERS | 4010 Boy Scout Boulevard, Suite 355 | Tampa, FL 33607 | 813.371.0980

This information contained herein was obtained from sources deemed to be reliable; however SRS Real Estate Partners makes no guarantees, warranties or representations as to the completeness or accuracy thereof.

SRSRE.COM



Imagery © 2016 Google



4th Street Restaurant

8123 4th St. N. | Saint Petersburg, FL



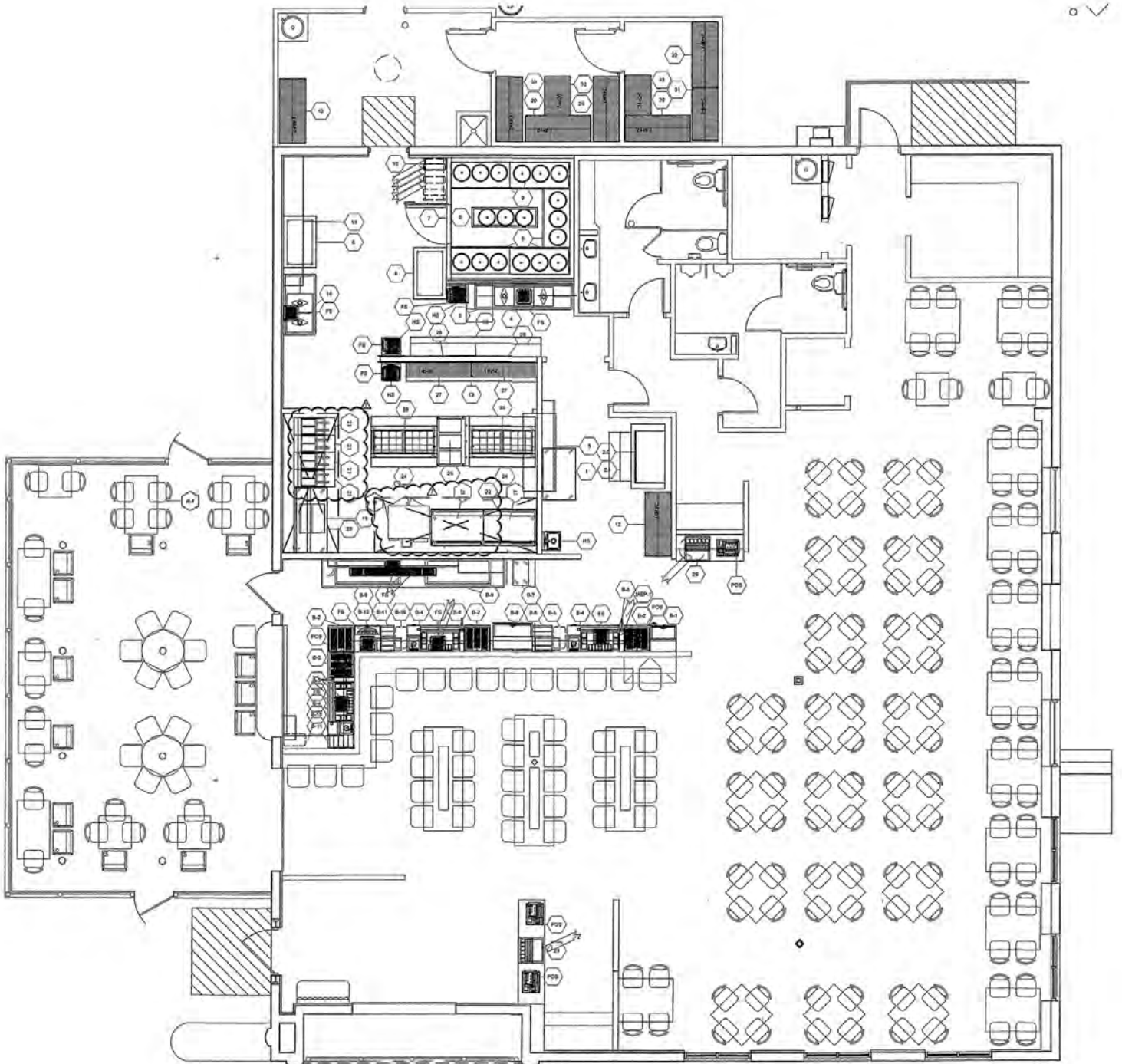
4th Street Restaurant

8123 4th St. N. | Saint Petersburg, FL



4th Street Restaurant

8123 4th St. N. | Saint Petersburg, FL



4th Street Restaurant

8123 4th St. N. | Saint Petersburg, FL



	1 mile	3 miles	5 miles
Population			
2020 Population	15,233	84,189	186,293
2000 Population	14,758	74,787	170,677
2010 Population	14,845	77,987	173,519
2025 Population	15,427	87,384	193,674
2000-2010 Annual Rate	0.06%	0.42%	0.17%
2010-2020 Population: Annual Growth Rate	0.25%	0.75%	0.70%
2020-2025 Population: Annual Growth Rate	0.25%	0.75%	0.78%
2020 Median Age	45.7	44.0	44.4
Households			
2000 Households	7,063	36,162	78,665
2010 Households	6,952	37,366	79,568
2020 Total Households	7,037	40,104	84,896
2025 Total Households	7,097	41,629	88,276
2000-2010 Annual Rate	-0.16%	0.33%	0.11%
2010-2020 Households: Annual Growth Rate	0.12%	0.69%	0.63%
2020-2025 Households: Annual Growth Rate	0.17%	0.75%	0.78%
2020 Average Household Size	2.13	2.07	2.16
Housing Units			
2020 Total Housing Units	8,015	45,787	96,489
2020 Owner Occupied Housing Units	4,178	22,313	48,988
2020 Renter Occupied Housing Units	2,860	17,791	35,908
2020 Vacant Housing Units	978	5,683	11,593
Race and Ethnicity			
2020 White Alone	82.2%	81.9%	79.9%
2020 Black Alone	8.0%	7.5%	7.5%
2020 American Indian/Alaska Native Alone	0.3%	0.3%	0.3%
2020 Asian Alone	3.9%	4.7%	6.3%
2020 Pacific Islander Alone	0.1%	0.1%	0.1%
2020 Hispanic Origin (Any Race)	11.1%	10.8%	11.5%
Income			
2020 Median Household Income	\$52,749	\$55,028	\$54,211
2020 Average Household Income	\$71,389	\$74,277	\$75,901
2020 Per Capita Income	\$33,118	\$35,329	\$34,677
2020 Population 25+ by Educational Attainment			
Total	11,532	64,321	141,579
High School Graduate	21.3%	21.2%	21.8%
GED/Alternative Credential	6.5%	5.0%	5.1%
Some College, No Degree	20.5%	21.3%	20.2%
Associate Degree	8.9%	9.4%	9.1%
Bachelor's Degree	19.9%	22.5%	21.6%
Graduate/Professional Degree	12.1%	12.6%	12.6%
Data for all businesses in area			
Total Businesses:	639	2,724	8,810
Total Employees:	7,858	45,329	115,521
Total Residential Population:	15,233	84,189	186,293
Employee/Residential Population Ratio:	1:1	1:1	1:1
2020 Total Daytime Population	14,086	81,560	199,409
Workers	6,804	41,146	108,564
Residents	7,282	40,414	90,845

Source: Esri, Esri and Infogroup, U.S. Census