

FOR SALE

Largo Retail/Restaurant Land Available

NWC 66th Street N & 126th Ave N | Largo, FL



Overview

LOT SIZE	2.18 Acres
ZONING	C-2
SALE PRICE	Contact Broker



Description

- Ideal for car wash, tire store, c-store or restaurant
- Signalized intersection
- High-traffic location more than 33,000 VPD
- Densely-populated area - population exceeds 95,000 people within 3 miles & 242,000 within 5 miles
- Just south of Ulmerton Road (60,000+ VPD)
- 200' frontage on 66th Street

Nearby Retailers



Demographics

	1 MILE	3 MILES	5 MILES
Population	10,126	94,628	242,526
Median HH Income	\$50,601	\$50,206	\$49,326
Daytime Population	12,677	106,218	267,124

Year: 2020 | Source: ESRI

Contact

DANIEL EARLES

813.424.2500 | daniel.earles@srsre.com

Traffic Counts

66th St 34,000 VPD

Year: 2019 | Source: FDOT

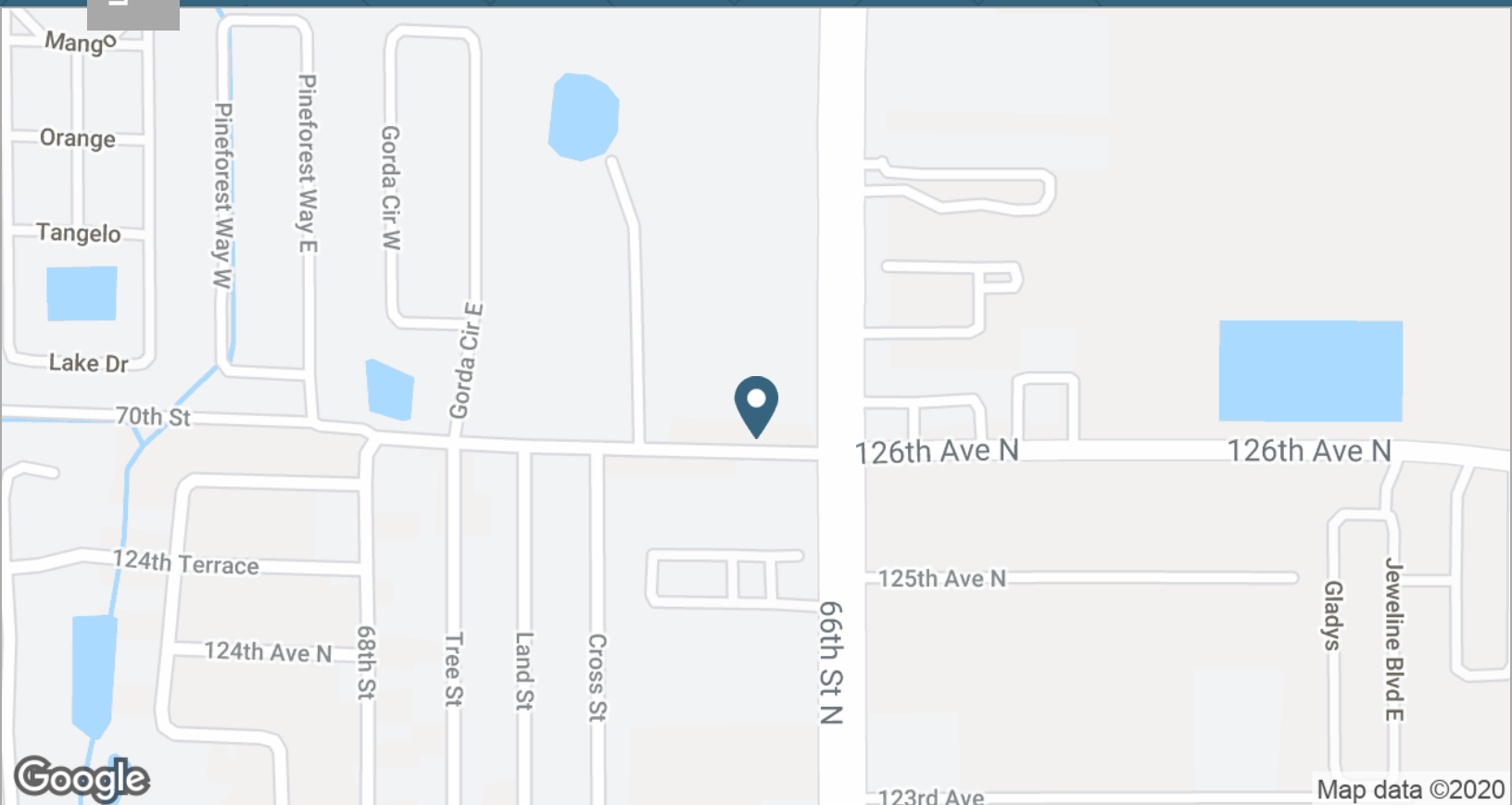
SRS REAL ESTATE PARTNERS | 4010 Boy Scout Boulevard, Suite 355 | Tampa, FL 33607 | 813.371.0980

This information contained herein was obtained from sources deemed to be reliable; however SRS Real Estate Partners makes no guarantees, warranties or representations as to the completeness or accuracy thereof.

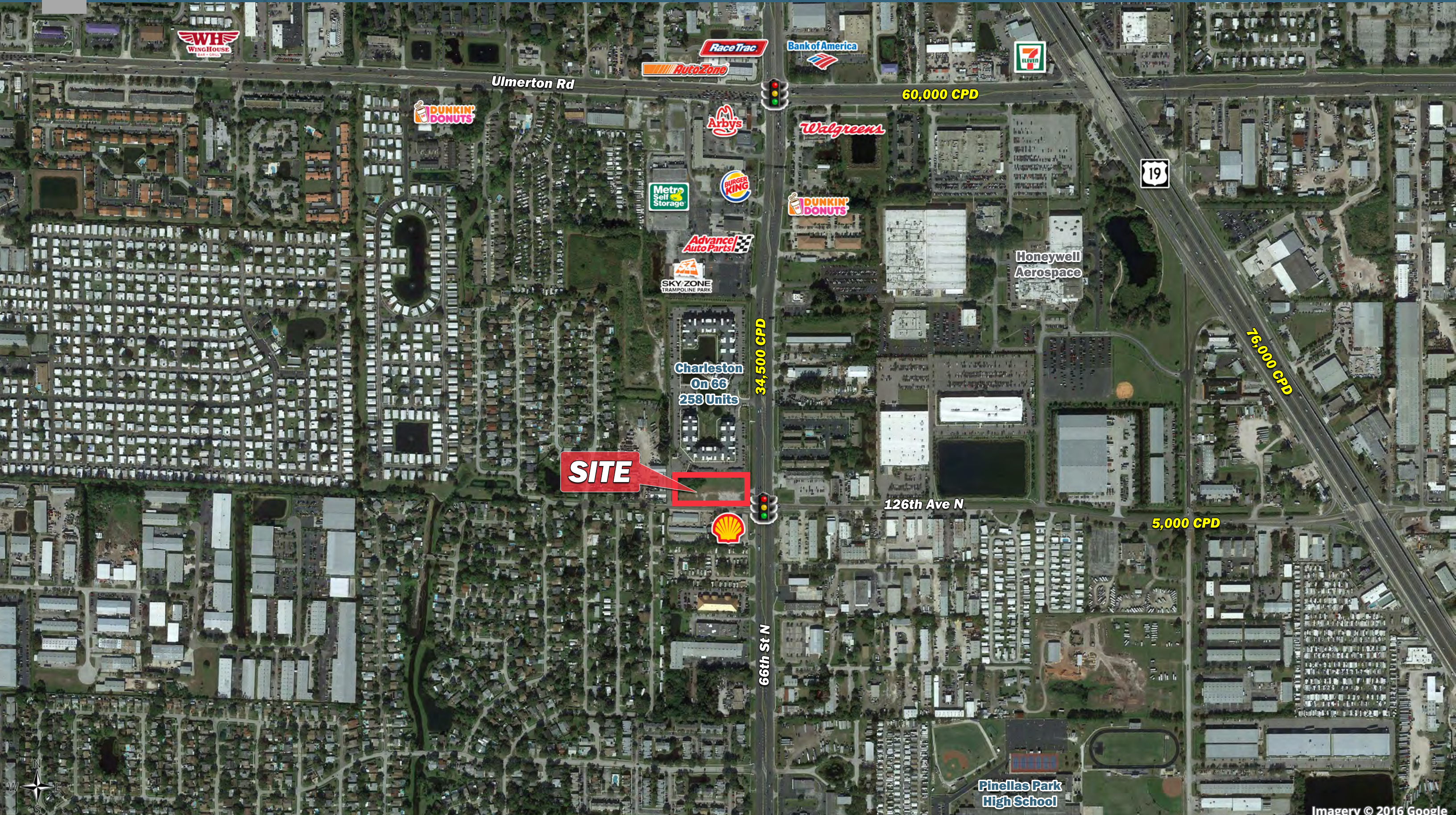
SRSRE.COM

Largo Retail/Restaurant Land Available

NWC 66th Street N & 126th Ave N | Largo, FL







Imagery © 2016 Google

Executive Summary

NWC 66th Street N & 126th Ave N | Largo, FL



	1 mile	3 miles	5 miles
Population			
2020 Population	10,126	94,628	242,526
2000 Population	9,151	83,285	220,190
2010 Population	8,961	88,282	225,031
2025 Population	10,613	97,485	252,275
2000-2010 Annual Rate	-0.21%	0.58%	0.22%
2010-2020 Population: Annual Growth Rate	1.20%	0.68%	0.73%
2020-2025 Population: Annual Growth Rate	0.94%	0.60%	0.79%
2020 Median Age	46.3	45.5	49.0
Households			
2000 Households	4,203	34,685	98,695
2010 Households	4,142	37,065	101,350
2020 Total Households	4,624	39,317	108,136
2025 Total Households	4,833	40,382	112,289
2000-2010 Annual Rate	-0.15%	0.67%	0.27%
2010-2020 Households: Annual Growth Rate	1.08%	0.58%	0.63%
2020-2025 Households: Annual Growth Rate	0.89%	0.54%	0.76%
2020 Average Household Size	2.16	2.30	2.18
Housing Units			
2020 Total Housing Units	5,592	45,266	126,090
2020 Owner Occupied Housing Units	2,743	26,028	70,734
2020 Renter Occupied Housing Units	1,881	13,288	37,402
2020 Vacant Housing Units	968	5,949	17,954
Race and Ethnicity			
2020 White Alone	78.4%	78.6%	81.9%
2020 Black Alone	5.3%	6.5%	5.8%
2020 American Indian/Alaska Native Alone	0.4%	0.4%	0.4%
2020 Asian Alone	8.3%	6.5%	5.2%
2020 Pacific Islander Alone	0.2%	0.1%	0.1%
2020 Hispanic Origin (Any Race)	13.5%	14.7%	12.4%
Income			
2020 Median Household Income	\$50,601	\$50,206	\$49,326
2020 Average Household Income	\$63,593	\$67,605	\$67,299
2020 Per Capita Income	\$28,908	\$28,415	\$30,097
2020 Population 25+ by Educational Attainment			
Total	7,807	71,834	188,620
High School Graduate	25.6%	28.2%	27.4%
GED/Alternative Credential	7.3%	6.0%	5.6%
Some College, No Degree	25.2%	22.6%	22.4%
Associate Degree	9.6%	9.0%	9.7%
Bachelor's Degree	18.6%	15.7%	16.6%
Graduate/Professional Degree	5.7%	8.2%	8.4%
Data for all businesses in area			
Total Businesses:	1,013	5,733	12,108
Total Employees:	9,987	73,257	157,009
Total Residential Population:	10,126	94,628	242,526
Employee/Residential Population Ratio:	1:1	1:1	1:1
2020 Total Daytime Population	12,677	106,218	267,124
Workers	7,737	58,683	139,915
Residents	4,940	47,535	127,209

Source: Esri, Esri and Infogroup, U.S. Census