


STAR METALS
RESIDENCES


STAR METALS
OFFICES


STAR METALS
Hotel





STAR METALS
OFFICES



STAR METALS
Hotel



STAR METALS
RESIDENCES



Star Metals Videos

[Inside the Design \(Square Feet Studio\)](#)

[Construction Update, July 2020](#)

[Matterport, Star Metals Office](#)

 **STAR METALS RESIDENCES**
December 2020 Delivery

 **Prevail**
COFFEE ROASTERS

@ Lease
1,360 SF

@ Lease
4,100 SF

@ Lease
3,623 SF



@ Lease
1,560 SF

 **FLIGHT CLUB**
SOCIAL DARTS

 **STAR METALS OFFICES**
May 2021 Delivery



STAR METALS Hotel
November 2022 Delivery

AUTOGRAPH COLLECTION[®] HOTELS



Star Metals Residences

- Q4 2020 Delivery
- 409 luxury Class-A apartments
- 86 on-grade parking spaces
- Expansive patios
- Pedestrian Mews located behind Northside Tavern
 - Additional seating for al fresco dining
 - String lights
 - Street art/murals
 - Living walls
- Ceiling Heights
 - 21'5"



Brady Ave.



BROCK HUDGINS ARCHITECTS NOT A PART



NOT A PART

@ Lease 1,360SF

3,076 SF

RESTAURANT 1 101

@ Lease 4,100 SF

Patio Area: 10' x width of space

2,600 SF

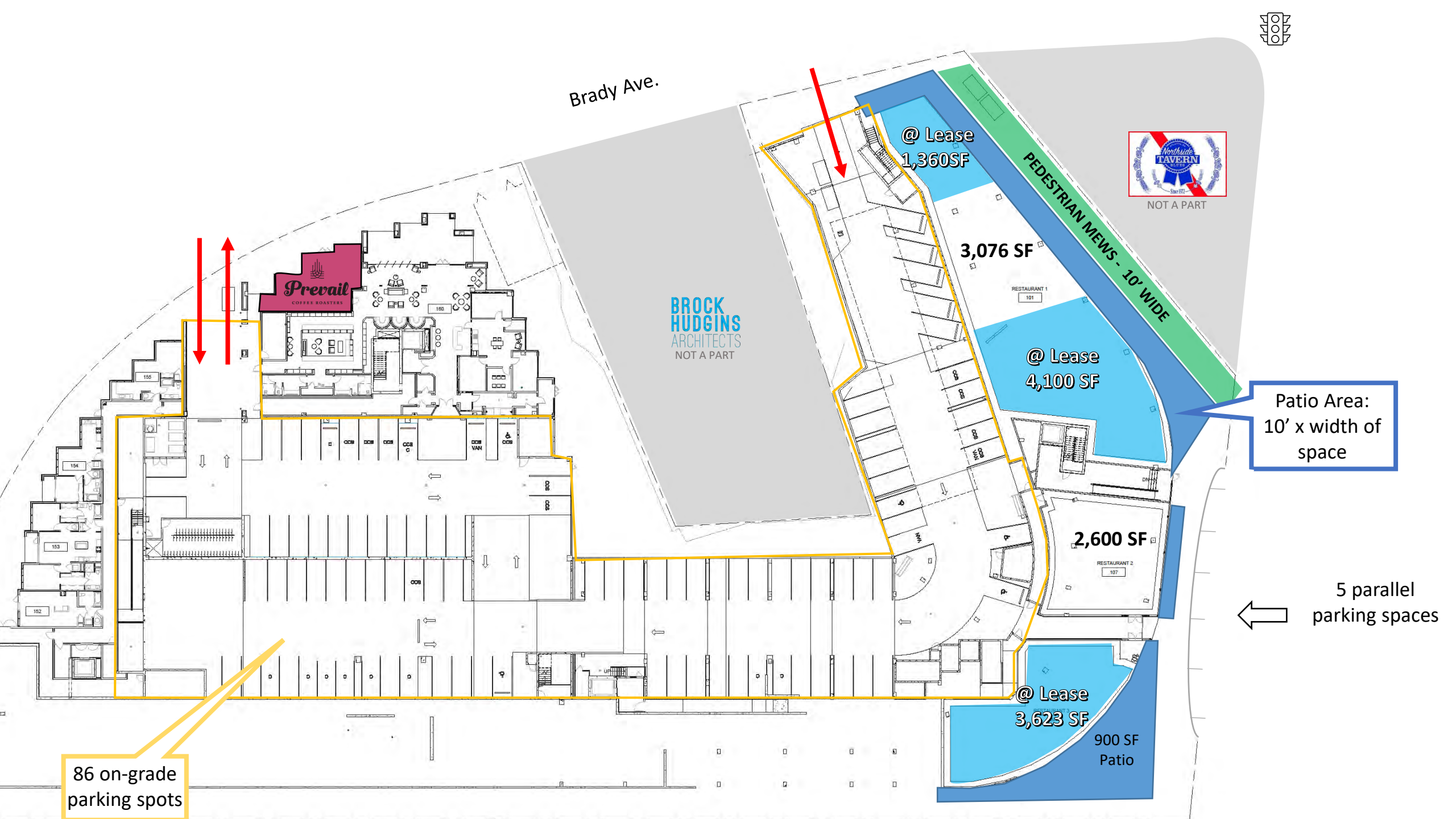
RESTAURANT 2 107

5 parallel parking spaces

@ Lease 3,623 SF

900 SF Patio

86 on-grade parking spots



Star Metals Residences

Façade Rendering





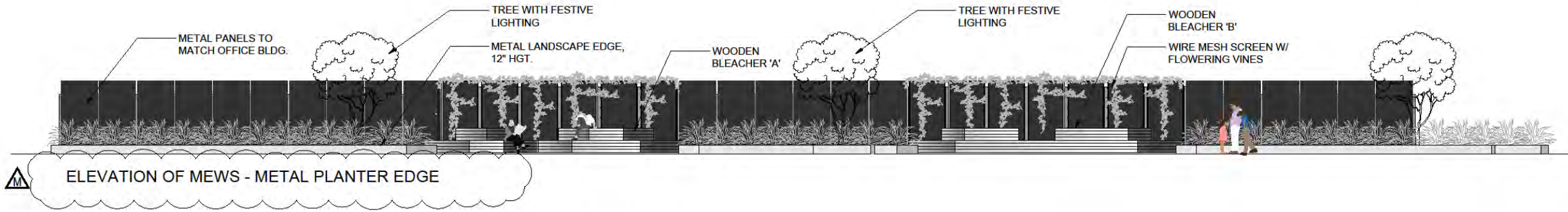
Differentiated Storefronts



SCENARIO 1



SCENARIO 2



Pedestrian Mews





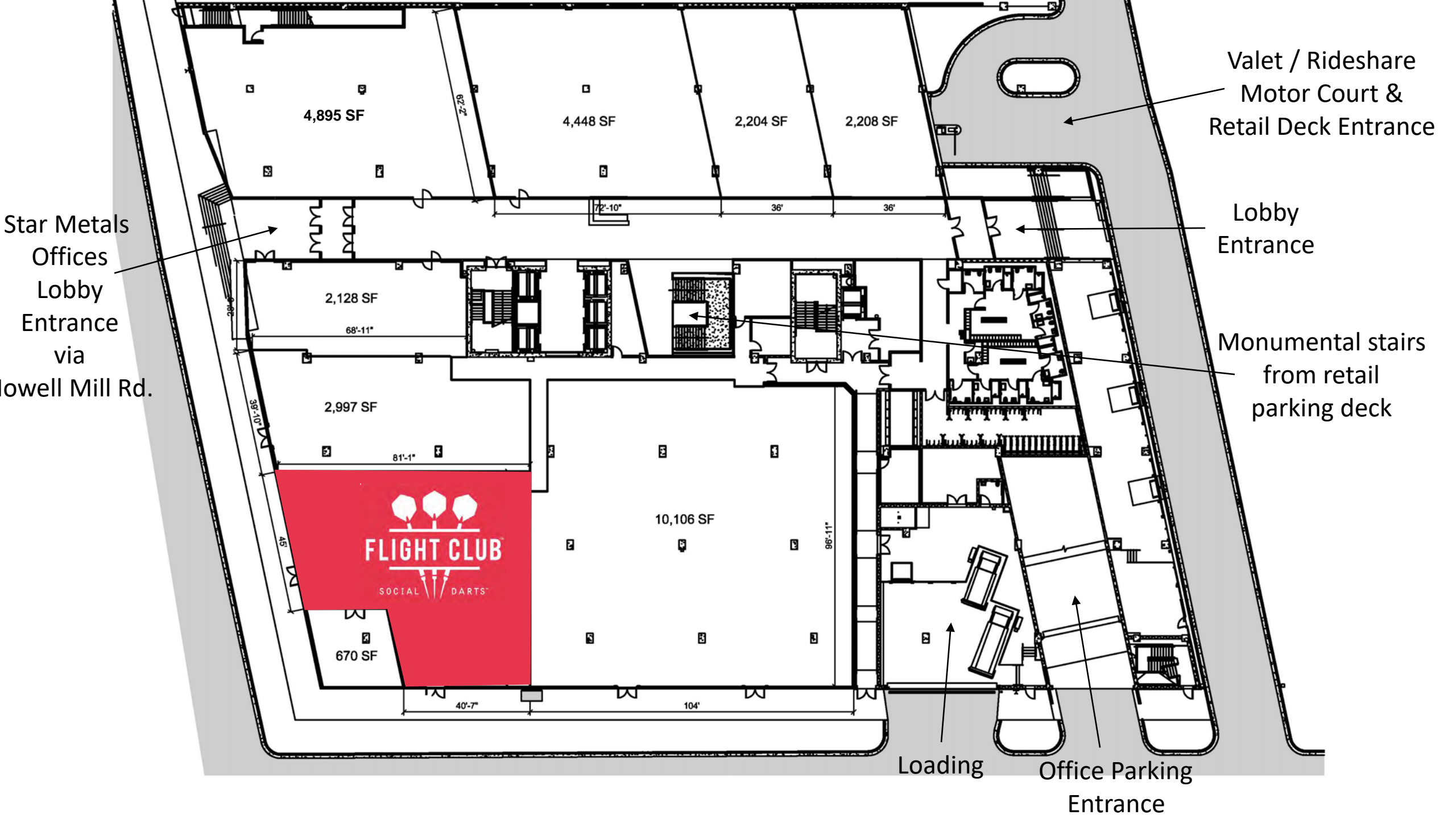
Star Metals Residences



A photograph of a modern, multi-story building with a glass facade. The building features large, illuminated signs for "SPACES", "STAR METALS", and "MARKET". The entrance is visible with a set of stairs and a glass door. The building is surrounded by landscaping, including trees with warm lights and various plants. A bicycle is parked on the sidewalk in the foreground. The sky is dark, suggesting dusk or night.

Star Metals Offices

- 237,000 SF of class A/T office
- Q2 2021 delivery
- 127 retail parks with dedicated entrance
- Office parks can be utilized by valet after 5pm
- Valet / Rideshare motor court
- Star Metals dedicated shuttle to/from MARTA



SPACES

METALS

STAR

METALS

MARKET

Work With Us





Star Metals Offices – 4th Floor Mezzanine Jewel Box

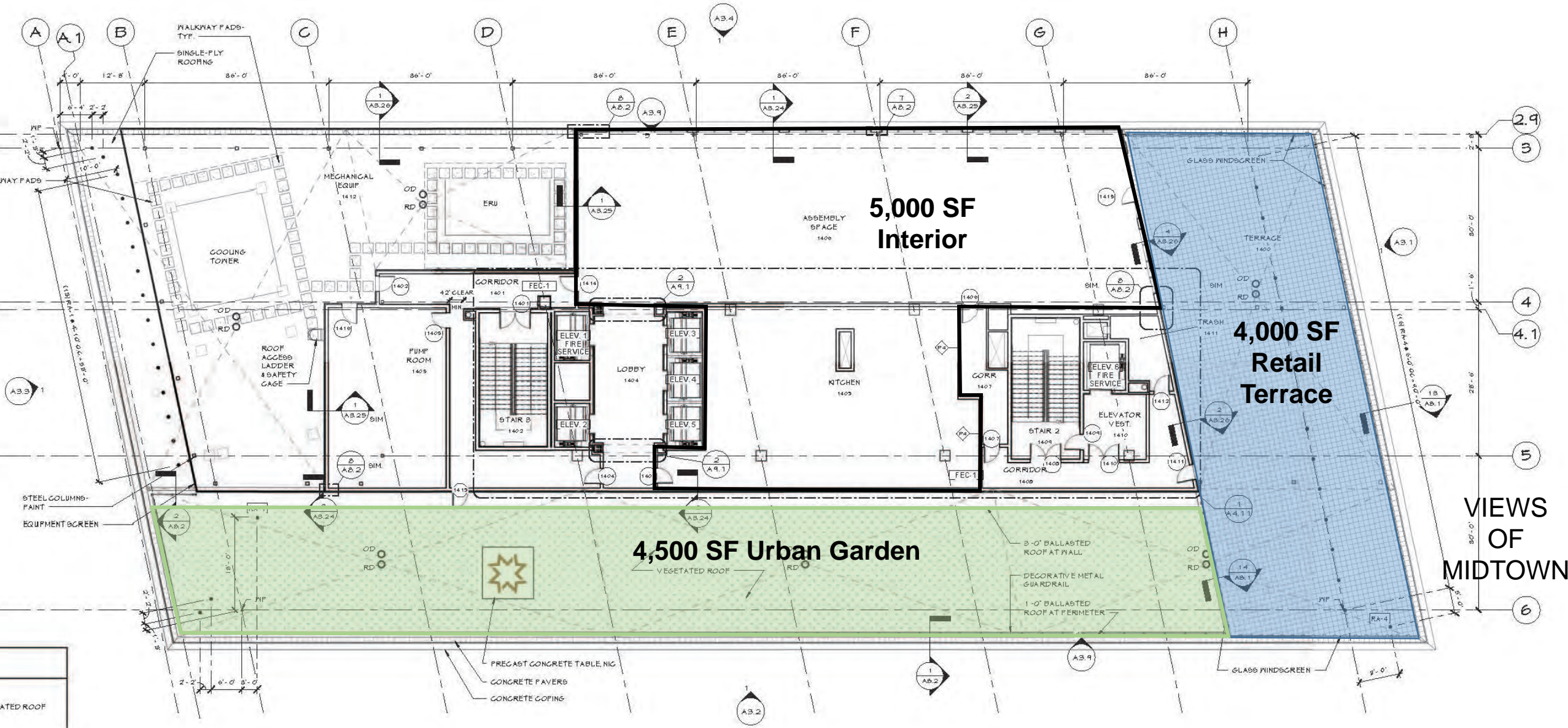
- 9,230 SF
- Floor to ceiling windows
 - 15'6" ceiling heights (not inclusive of structural elements)
- Howell Mill visibility
- Dedicated on-grade parking

Star Metals Offices – 14th Floor Rooftop

- Unobstructed views of Midtown & Downtown
- 5,000 SF interior
- 4,000 SF outdoor terrance (exclusive to retail)
- 4,500 SF communal urban forest
- Dedicated service elevator



VIEWS OF BUCKHEAD



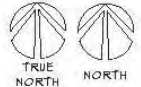
5,000 SF Interior

4,000 SF Retail Terrace

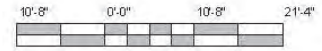
4,500 SF Urban Garden

VIEWS OF MIDTOWN

VIEWS OF DOWNTOWN



1 FOURTEENTH FLOOR PLAN
A2.14 3/32" = 1'-0"





STARMETALS  STARMETALS 



Star Metals Offices
Lobby Renderings