

FOR SALE

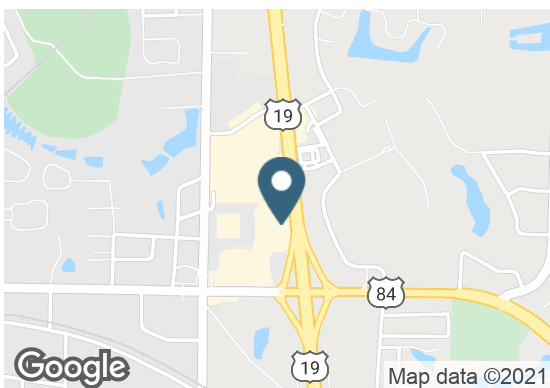
Publix / Lowe's Outparcel

13887 US Highway 19 South | Thomasville, GA



Overview

SALE PRICE	Contact Broker
LOT SIZE	.87 AC
ZONING	C-1
PARCEL	#046HTH 128 A



Description

- Site is ready to go vertical
- Well located in desirable part of the City of Thomasville on Hwy 19 in front of a new Publix
- Zoned C-1 (City of Thomasville)
- Ideal site QSR, auto parts/repair, multi-tenant retail building, medical, car wash
- All utilities on site with stormwater

Nearby Retailers



Contact

BILLY HARVIN, JR.
678.894.0260 | billy.harvin@srsre.com

Demographics

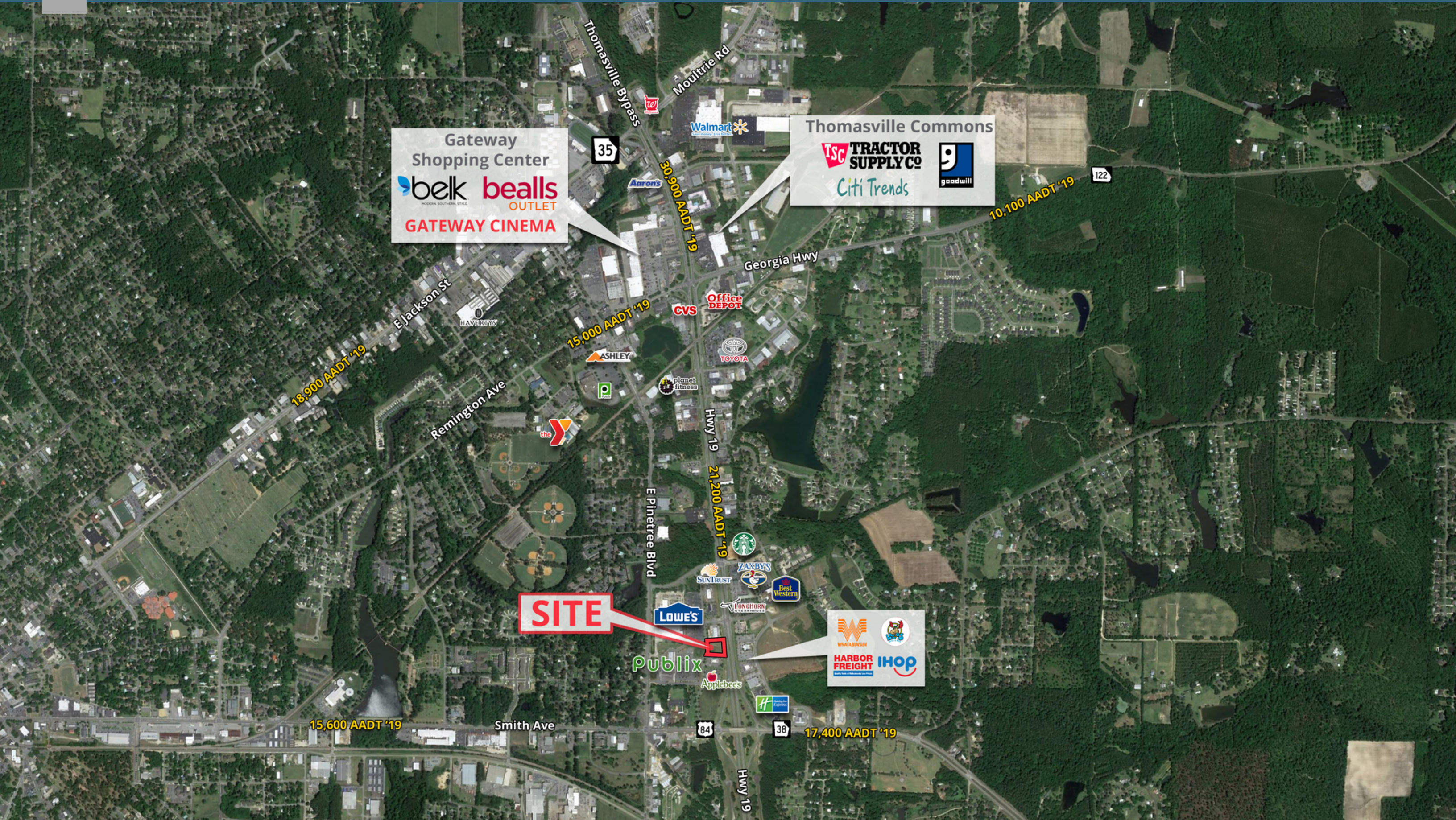
	1 MILE	3 MILES	5 MILES
Average Household Income	\$58,103	\$57,606	\$57,917
Households	1,287	8,551	11,481
Daytime Population	3,667	25,279	32,822

Year: 2020 | Source: ESRI

SRS REAL ESTATE PARTNERS | 3445 Peachtree Road NE, Suite 950 | Atlanta, GA 30326 | 404.231.2232

This information contained herein was obtained from sources deemed to be reliable; however SRS Real Estate Partners makes no guarantees, warranties or representations as to the completeness or accuracy thereof.

SRSRE.COM



Gateway Shopping Center

bek bealls
MODERN SOUTHERN STYLE OUTLET

GATEWAY CINEMA

Thomasville Commons

TSC TRACTOR SUPPLY CO
Citi Trends goodwill

SITE

LOWE'S

publix

Applebees

WHATABUSHER

HARBOR FREIGHT IHOP





SITE

21,200 AADT '19

Hwy 19

Hwy 19



KFC



LOWE'S

Publix

verizon

SUNTRUST



ZAXBY'S



LONGHORN STEAKHOUSE

Best Western



WHATABURGER



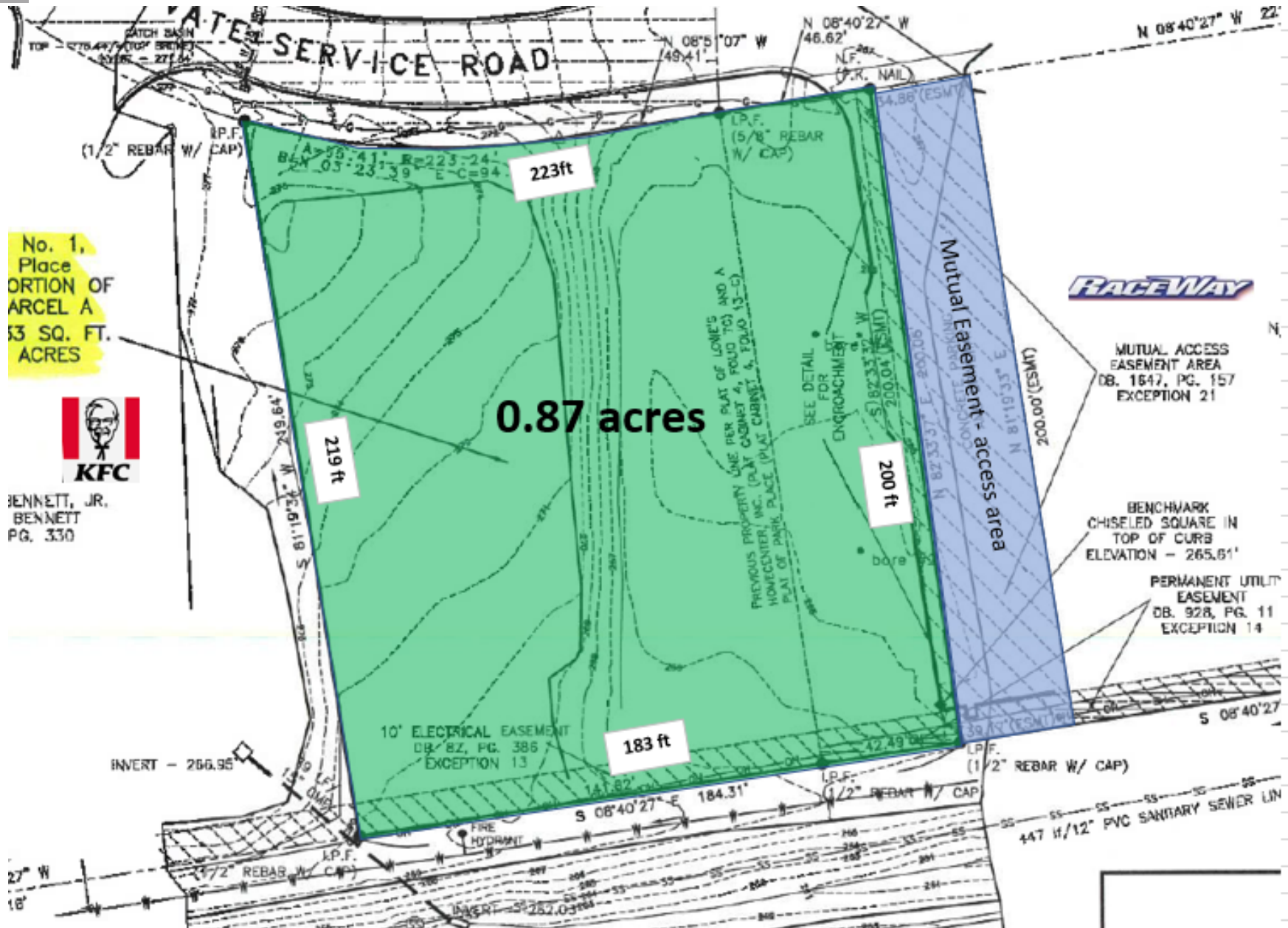
IHOP

HARBOR FREIGHT
Quality Tools at Ridiculously Low Prices



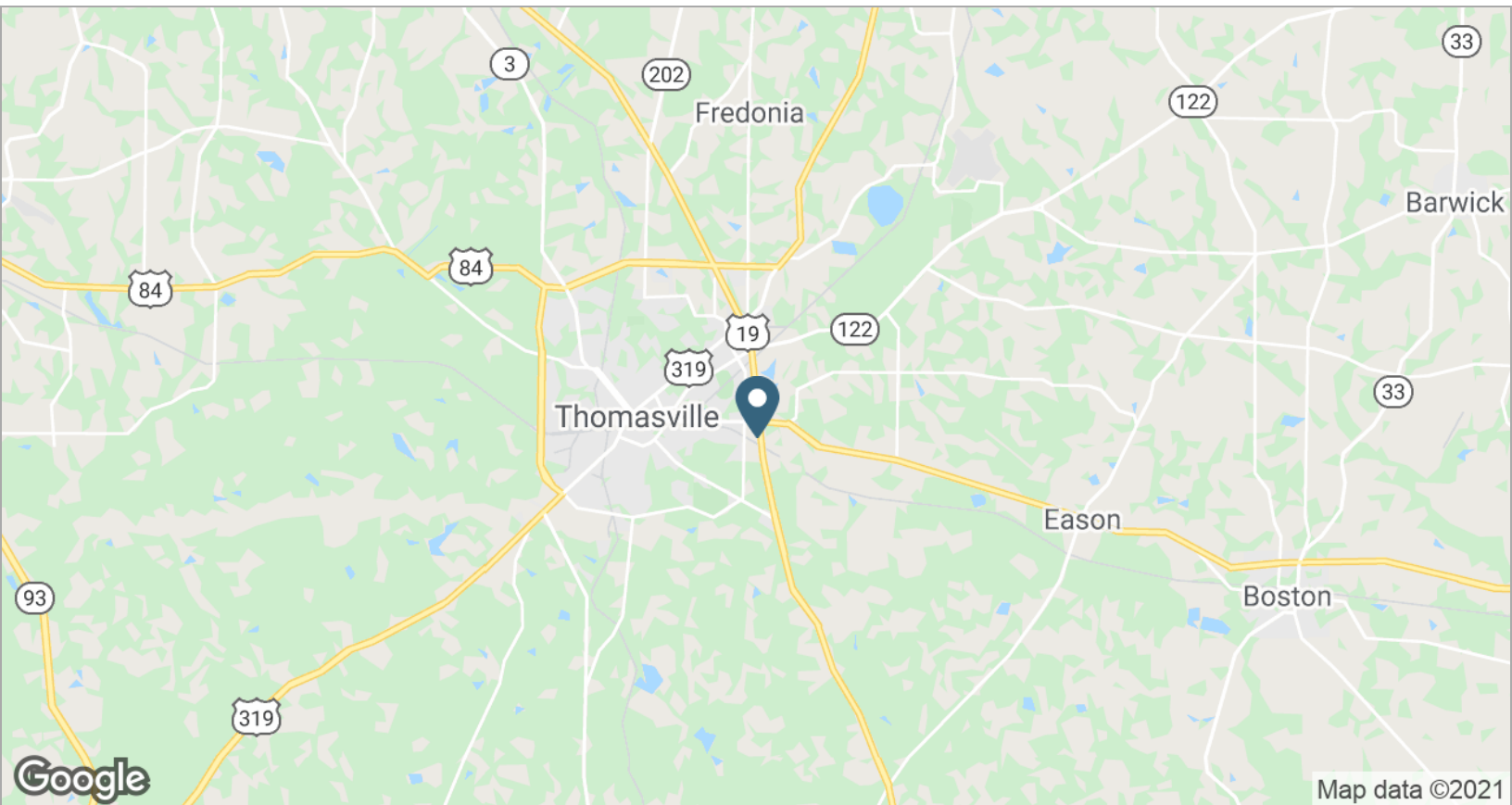
Publix / Lowe's Outparcel

13887 US Highway 19 South | Thomasville, GA



Publix / Lowe's Outparcel

13887 US Highway 19 South | Thomasville, GA



	1 mile	3 miles	5 miles
Population			
2020 Population	2,741	20,770	28,736
2000 Population	2,411	20,221	27,045
2010 Population	2,565	20,508	28,332
2025 Population	2,806	20,985	29,236
2000-2010 Annual Rate	0.62%	0.14%	0.47%
2010-2020 Population: Annual Growth Rate	0.65%	0.12%	0.14%
2020-2025 Population: Annual Growth Rate	0.47%	0.21%	0.35%
2020 Median Age	37.1	40.9	40.2
Households			
2000 Households	1,035	7,951	10,329
2010 Households	1,209	8,426	11,263
2020 Total Households	1,287	8,551	11,481
2025 Total Households	1,316	8,629	11,674
2000-2010 Annual Rate	1.57%	0.58%	0.87%
2010-2020 Households: Annual Growth Rate	0.61%	0.14%	0.19%
2020-2025 Households: Annual Growth Rate	0.45%	0.18%	0.33%
2020 Average Household Size	2.12	2.39	2.46
Housing Units			
2020 Total Housing Units	1,428	9,967	13,368
2020 Owner Occupied Housing Units	599	5,101	6,852
2020 Renter Occupied Housing Units	688	3,450	4,629
2020 Vacant Housing Units	141	1,416	1,887
Race and Ethnicity			
2020 White Alone	65.5%	55.7%	53.6%
2020 Black Alone	27.8%	39.4%	41.5%
2020 American Indian/Alaska Native Alone	0.3%	0.4%	0.4%
2020 Asian Alone	3.4%	1.4%	1.3%
2020 Pacific Islander Alone	0.0%	0.0%	0.0%
2020 Hispanic Origin (Any Race)	3.9%	4.0%	3.9%
Income			
2020 Median Household Income	\$42,357	\$39,961	\$39,173
2020 Average Household Income	\$58,103	\$57,606	\$57,917
2020 Per Capita Income	\$25,745	\$23,575	\$23,292
2020 Population 25+ by Educational Attainment			
Total	1,871	14,381	19,699
High School Graduate	16.0%	22.6%	23.7%
GED/Alternative Credential	5.5%	4.8%	4.9%
Some College, No Degree	19.7%	19.3%	20.2%
Associate Degree	6.7%	7.0%	6.9%
Bachelor's Degree	17.6%	16.6%	15.7%
Graduate/Professional Degree	19.1%	15.1%	13.8%
Data for all businesses in area			
Total Businesses:	228	1,399	1,624
Total Employees:	2,673	17,451	20,344
Total Residential Population:	2,741	20,770	28,736
Employee/Residential Population Ratio:	1:1	1:1	1:1
2020 Total Daytime Population	3,667	25,279	32,822
Workers	2,044	12,105	14,767
Residents	1,623	13,174	18,055