

FOR SALE OR LEASE

Automotive Dealership

6740 Oakley Ind Blvd | Union City, GA 30291



12,818 S SF Available 3.5 Acres Land

Call for Pricing
Price

DESCRIPTION

- 12,818 SF Automotive Dealership on 3.5 Acres
- 225 Parking Spaces with Gated Lot
- 7 Service Bays
- Located in Auto-Row with 12 Franchise Dealerships in less than a mile
- Located in a dense industrial corridor off I-85 with Kraft, P&G, DHL, and Amazon

DEMOGRAPHICS

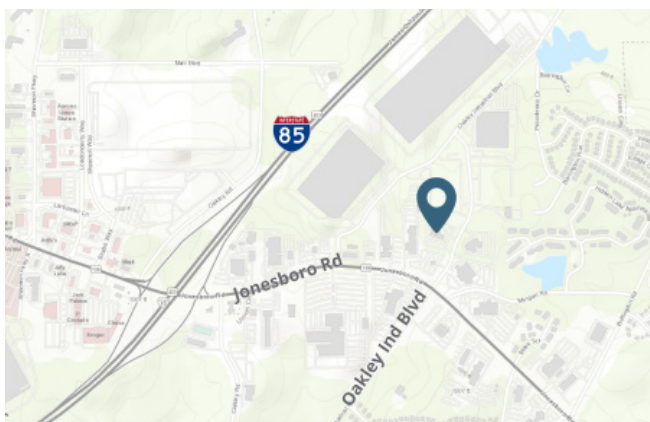
	1 Mile	3 Miles	5 Miles
Population	7,239	46,963	109,902
Daytime Population	7,099	43,116	99,792
Median HH Income	\$42,136	\$50,393	\$52,482
Average HH Income	\$47,987	\$60,277	\$66,120

Year: 2020 | Source: Esri

TRAFFIC COUNTS

Oakley Industrial Blvd	14,800 AADT
Jonesboro Rd	35,700 AADT
I-85	153,000 AADT

Year: 2019 | Source: GDOT



CONTACT

Ellen Grisette
678.420.1392 | ellen.grisette@srsre.com

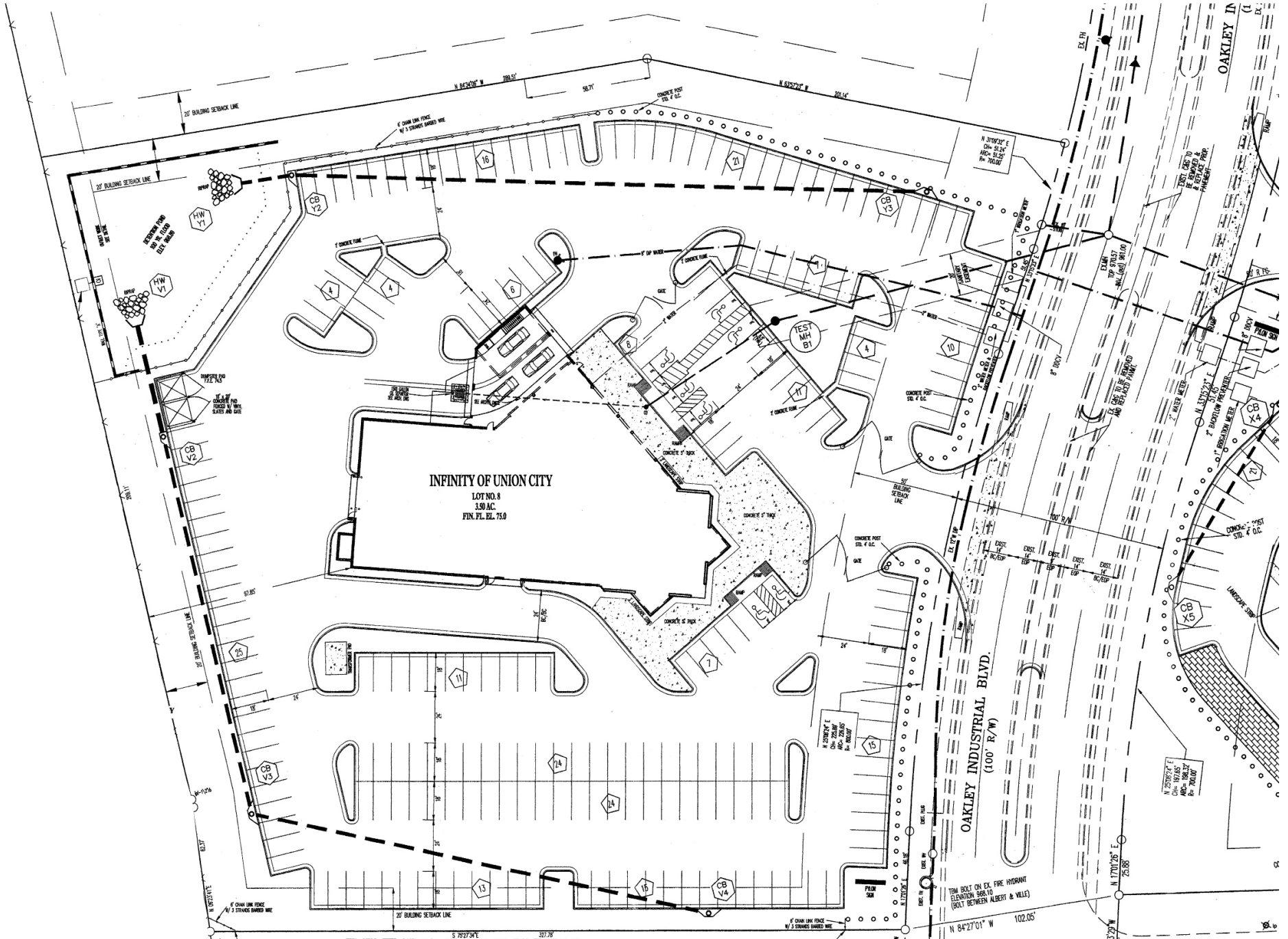
Trade Area

Union City, GA



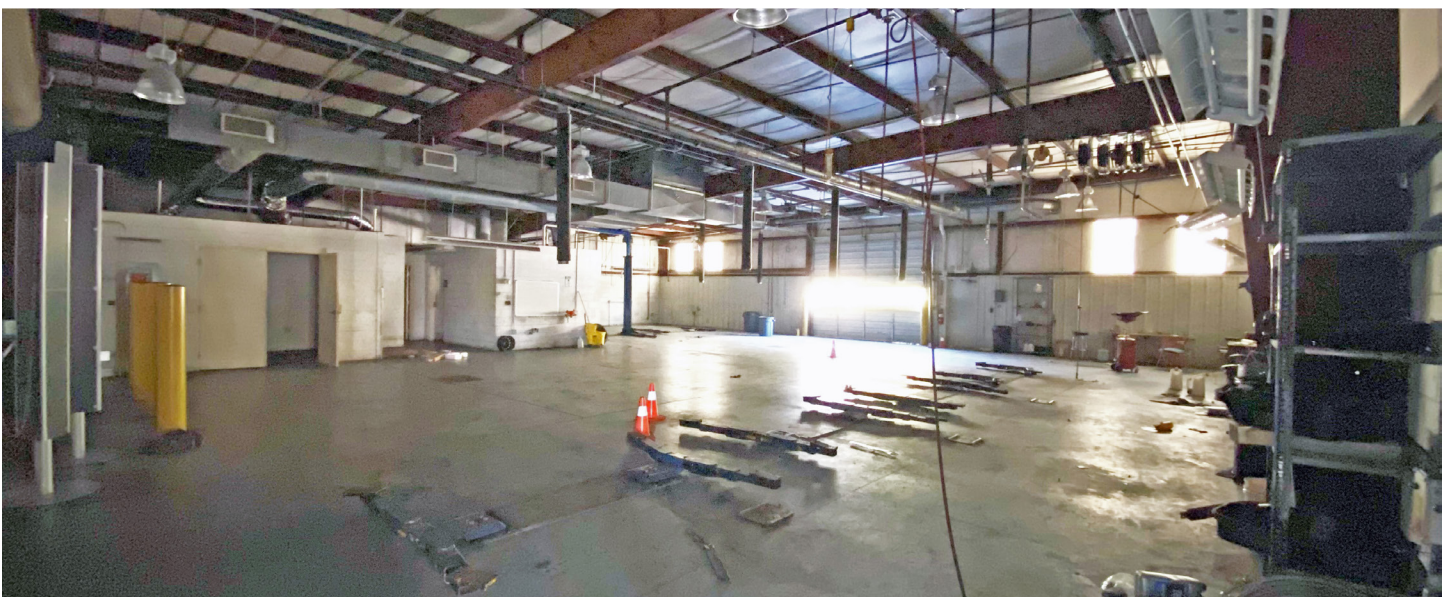
Site Plan

Union City, GA



Auto Dealership for Sale or Lease

6740 Oakley Ind Blvd | Union City, GA 30291



Auto Dealership for Sale or Lease

6740 Oakley Ind Blvd | Union City, GA 30291



Population			
2020 Population	7,239	46,963	109,902
2000 Population	4,129	26,439	68,724
2010 Population	6,537	39,537	95,789
2020 Population	7,627	50,099	116,721
2000-2010 Annual Rate	4.70%	4.11%	3.38%
2010-2020 Population: Annual Growth Rate	1.00%	1.69%	1.35%
2020-2025 Population: Annual Growth Rate	1.05%	1.30%	1.21%
2020 Median Age	31.8	39.9	34.9
Households			
2000 Households	1,826	9,799	24,983
2010 Households	2,829	14,794	35,384
2020 Total Households	3,054	17,309	40,461
2025 Total Households	3,213	18,428	42,948
2000-2010 Annual Rate	4.46%	4.21%	3.88%
2010-2020 Households: Annual Growth Rate	0.75%	1.54%	1.32%
2020-2025 Households: Annual Growth Rate	1.02%	1.20%	1.20%
2020 Average Household Size	2.37	2.71	2.71
Housing Units			
2020 Total Housing Units	3,440	18,961	45,285
2020 Owner Occupied Housing Units	1,440	11,067	26,723
2020 Renter Occupied Housing Units	1,613	6,242	19,738
2020 Vacant Housing Units	386	1,652	4,794
Race and Ethnicity			
2020 White Alone	4.7%	7.3%	9.1%
2020 Black Alone	90.8%	87.2%	84.2%
2020 American Indian/Alaska Native Alone	0.2%	0.2%	0.3%
2020 Asian Alone	0.9%	1.0%	1.3%
2020 Pacific Islander Alone	0.0%	0.0%	0.0%
2020 Hispanic Origin (Any Race)	2.3%	4.5%	5.9%
Income			
2020 Median Household Income	\$42,136	\$50,393	\$52,482
2020 Average Household Income	\$47,987	\$60,277	\$66,120
2020 Per Capita Income	\$16,771	\$22,377	\$24,261
2020 Population 25+ by Educational Attainment			
Total	4,461	29,972	70,822
High School Graduate	25.7%	29.1%	28.7%
GED/Alternative Credential	2.6%	2.9%	2.7%
Some College, No Degree	24.6%	22.1%	21.7%
Associate Degree	18.1%	12.4%	10.7%
Bachelor's Degree	16.4%	17.5%	17.5%
Graduate/Professional Degree	6.0%	8.2%	9.9%
Data for all businesses in area			
Total Businesses:	144	911	2,424
Total Employees:	2,188	12,297	28,205
Total Residential Population:	7,239	46,963	109,902
Employee/Residential Population Ratio:	0:1	0:1	0:1
2020 Total Daytime Population	7,099	43,116	99,792
Workers	2,914	15,233	34,658
Residents	4,185	27,883	65,134