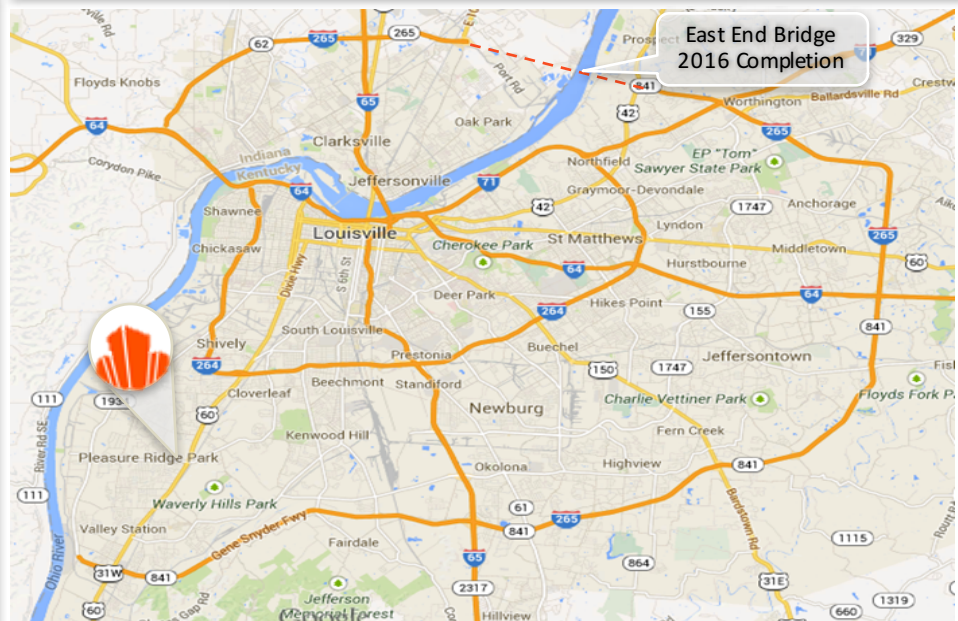




HIGHLIGHTS

- 1.58 +/- Acres
- 912 +/- SF free standing building
- Sale Price: \$960,000
- Zoned C-2
- Excellent Visibility from Dixie Highway

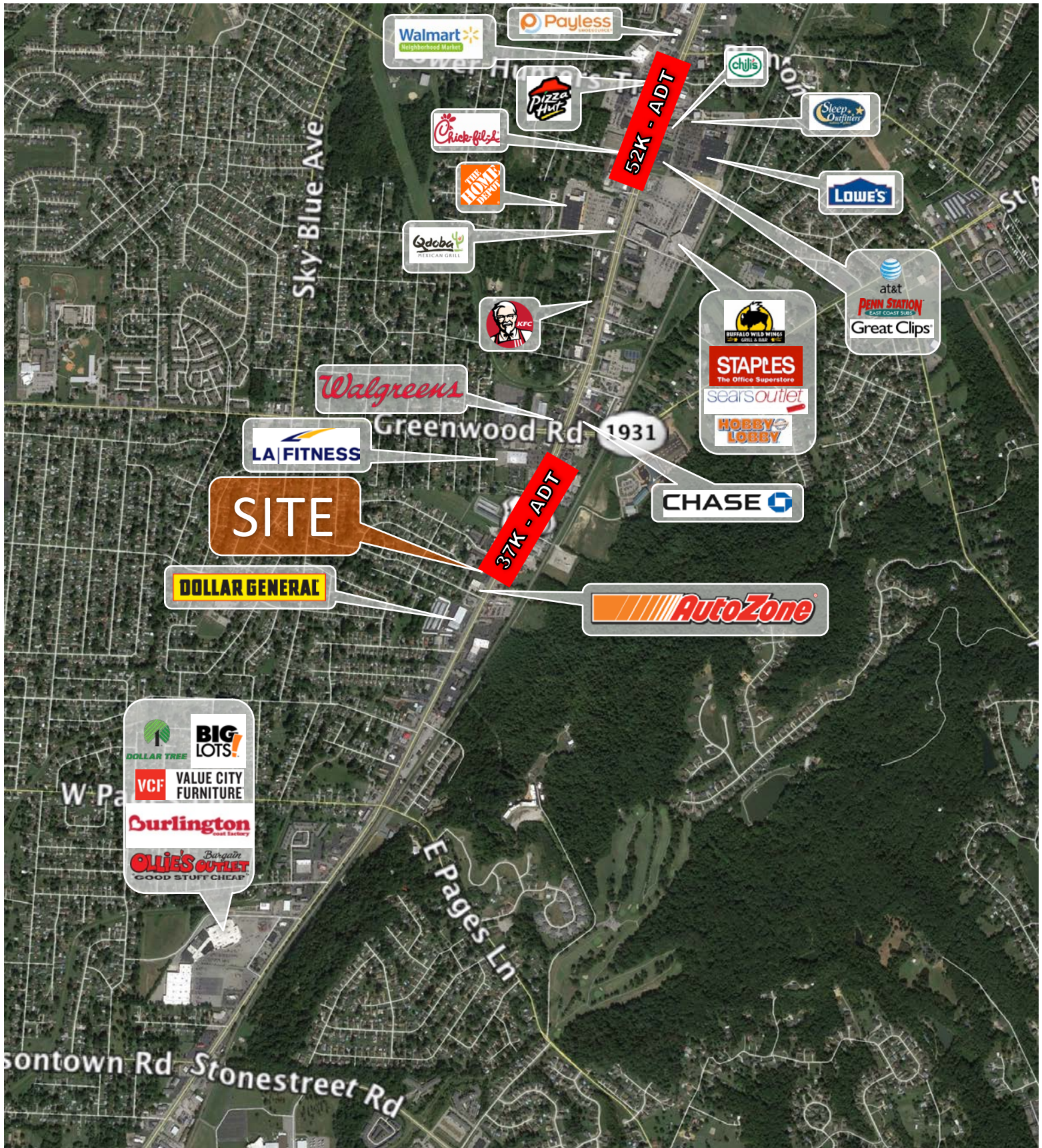
**7770 DIXIE HIGHWAY
LOUISVILLE, KY**

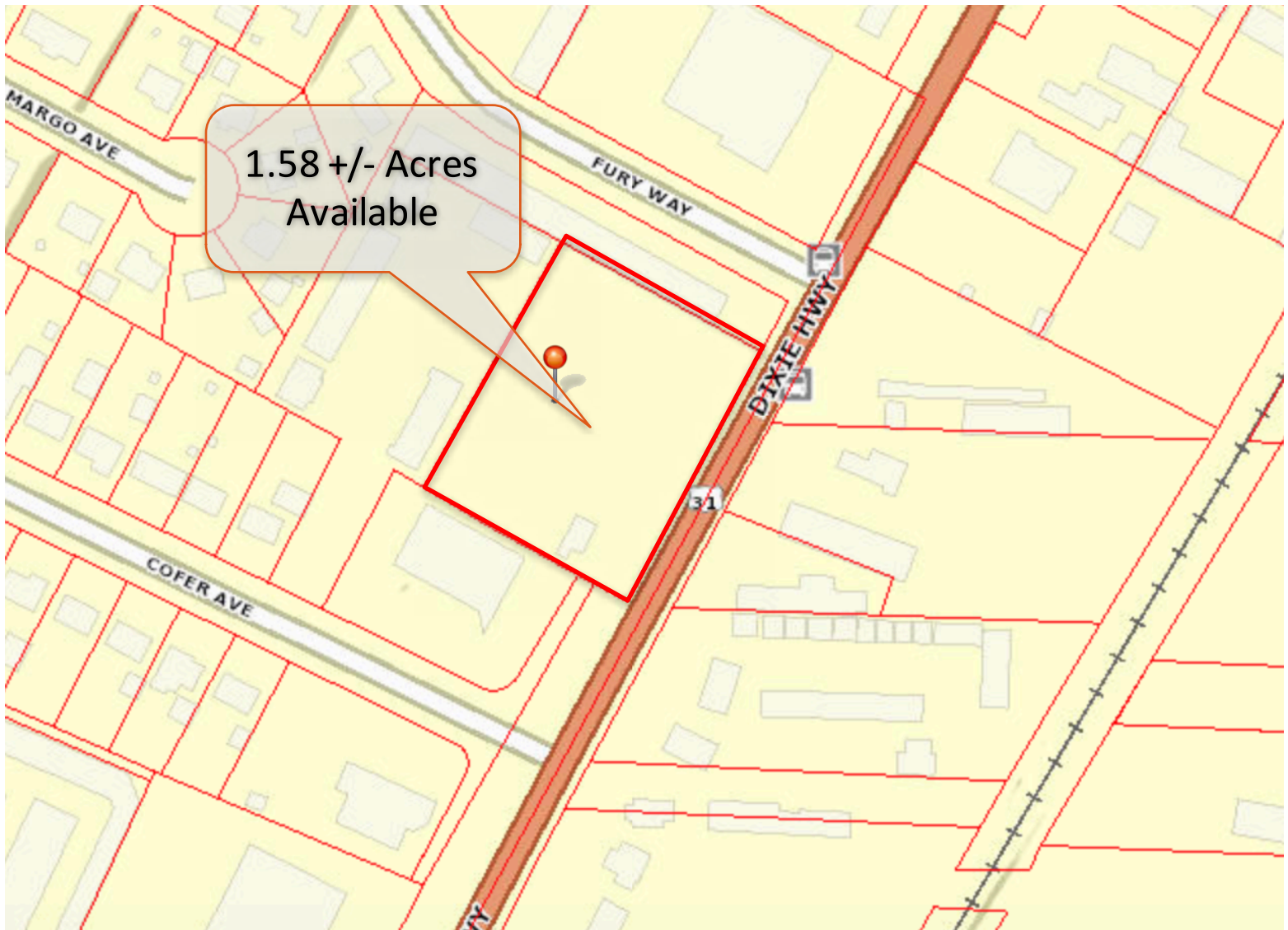


3 Mile: Pop (2016 est.): 72,673
5 Mile: Pop (2016 est.): 153,400

Income AHH: \$60,761
Income AHH: \$55,087







Demographics

SUMMARY PROFILE

2000-2010 Census, 2016 Estimates with 2021 Projections

RS1

7770 Dixie Hwy

Louisville, KY 40258

2 mi radius

3 mi radius

5 mi radius

	2 mi radius	3 mi radius	5 mi radius	
POPULATION	2016 Estimated Population	34,970	72,673	153,400
	2021 Projected Population	35,670	74,212	156,871
	2010 Census Population	34,436	71,559	150,345
	2000 Census Population	31,007	66,522	144,124
	Projected Annual Growth 2016 to 2021	0.4%	0.4%	0.5%
	Historical Annual Growth 2000 to 2016	0.8%	0.6%	0.4%
	2016 Median Age	39.6	38.6	37.5
HOUSEHOLDS	2016 Estimated Households	14,436	29,498	62,269
	2021 Projected Households	15,041	30,779	65,071
	2010 Census Households	13,960	28,543	59,995
	2000 Census Households	12,362	26,187	57,918
	Projected Annual Growth 2016 to 2021	0.8%	0.9%	0.9%
	Historical Annual Growth 2000 to 2016	1.0%	0.8%	0.5%
RACE AND ETHNICITY	2016 Estimated White	86.7%	84.4%	75.6%
	2016 Estimated Black or African American	9.2%	11.1%	17.8%
	2016 Estimated Asian or Pacific Islander	1.1%	1.2%	2.3%
	2016 Estimated American Indian or Native Alaskan	0.2%	0.2%	0.2%
	2016 Estimated Other Races	2.8%	3.1%	4.1%
	2016 Estimated Hispanic	2.6%	2.9%	4.8%
INCOME	2016 Estimated Average Household Income	\$63,174	\$60,761	\$55,087
	2016 Estimated Median Household Income	\$51,906	\$50,847	\$46,141
	2016 Estimated Per Capita Income	\$26,109	\$24,712	\$22,411
EDUCATION (AGE 25+)	2016 Estimated Elementary (Grade Level 0 to 8)	3.5%	3.4%	4.9%
	2016 Estimated Some High School (Grade Level 9 to 11)	7.6%	8.3%	9.9%
	2016 Estimated High School Graduate	40.3%	39.2%	38.6%
	2016 Estimated Some College	23.8%	25.0%	24.2%
	2016 Estimated Associates Degree Only	8.4%	8.7%	8.0%
	2016 Estimated Bachelors Degree Only	9.6%	9.2%	8.8%
	2016 Estimated Graduate Degree	6.8%	6.2%	5.6%
BUSINESS	2016 Estimated Total Businesses	954	1,785	3,851
	2016 Estimated Total Employees	9,492	21,150	46,518
	2016 Estimated Employee Population per Business	9.9	11.8	12.1
	2016 Estimated Residential Population per Business	36.7	40.7	39.8

