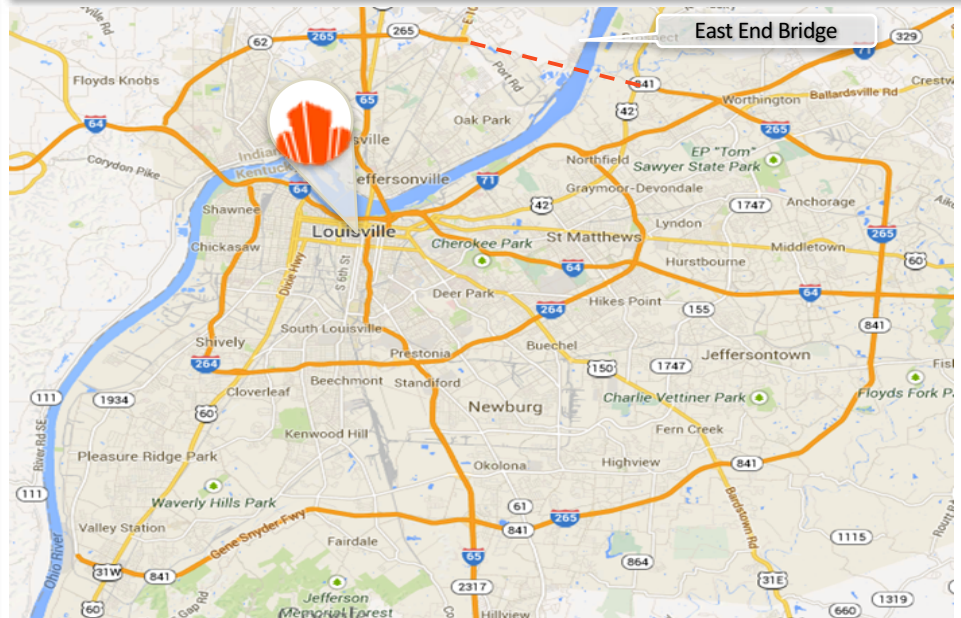




HIGHLIGHTS

- 5,000 SF first floor Retail Space Available
- 10,000 SF Office Space Available
- First Floor Lease Rate : \$20 SF (NNN)
- Second/Third Floor Lease Rate: \$15.00 SF
- Located in CBD near the OMNI Hotel

**311 W MUHAMMAD ALI BLVD
LOUISVILLE, KY**



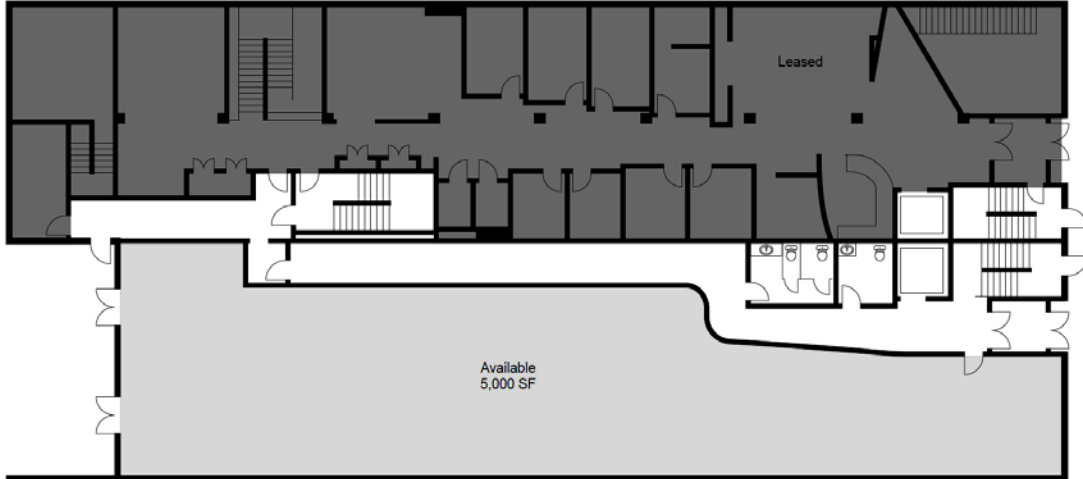
3 Mile: Pop (2015 est.): 123,881
5 Mile: Pop (2015 est.): 272,938

Income AHH: \$42,663
Income AHH: \$52,461

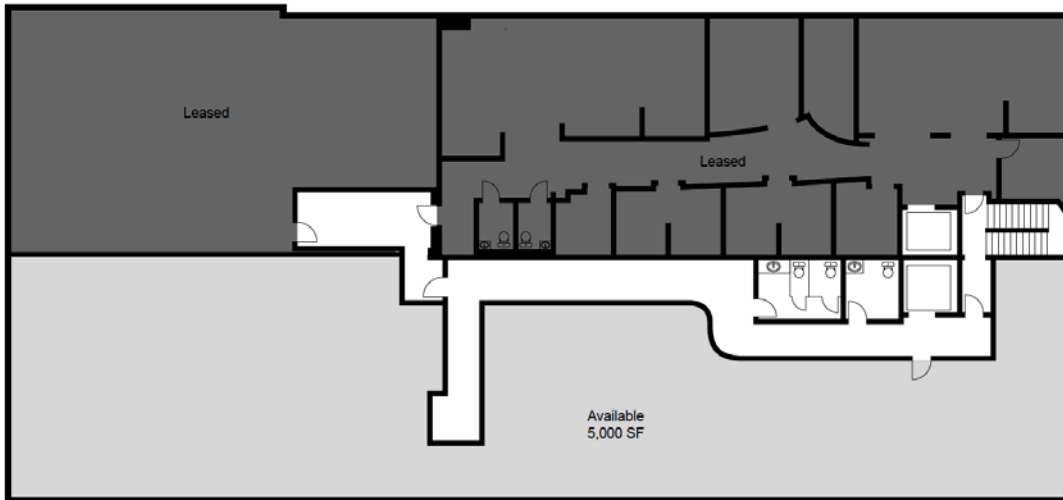


Ohio River

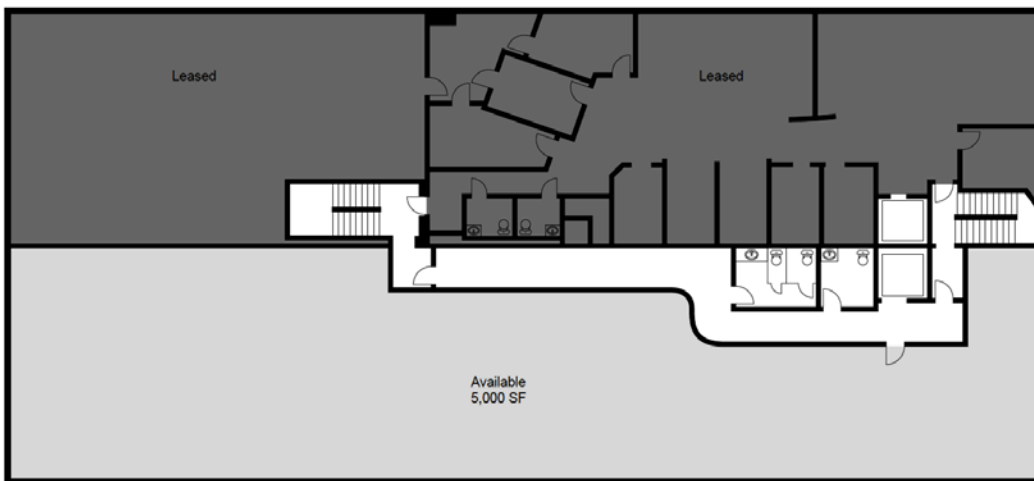




First Floor



Second Floor



Third Floor



Demographics

SUMMARY PROFILE

2000-2010 Census, 2016 Estimates with 2021 Projections

RS1

311 W Muhammad Ali Blvd

Louisville, KY 40202-2505

1 mi radius

3 mi radius

5 mi radius

		1 mi radius	3 mi radius	5 mi radius
POPULATION	2016 Estimated Population	16,266	123,881	272,938
	2021 Projected Population	16,698	128,374	281,728
	2010 Census Population	15,126	112,299	254,866
	2000 Census Population	13,446	118,011	265,876
	Projected Annual Growth 2016 to 2021	0.5%	0.7%	0.6%
	Historical Annual Growth 2000 to 2016	1.3%	0.3%	0.2%
	2016 Median Age	34.5	34.7	36.6
HOUSEHOLDS	2016 Estimated Households	7,362	55,764	120,918
	2021 Projected Households	7,784	59,072	127,526
	2010 Census Households	6,503	49,429	110,611
	2000 Census Households	6,299	51,584	114,804
	Projected Annual Growth 2016 to 2021	1.1%	1.2%	1.1%
	Historical Annual Growth 2000 to 2016	1.1%	0.5%	0.3%
RACE AND ETHNICITY	2016 Estimated White	31.1%	50.7%	58.4%
	2016 Estimated Black or African American	63.4%	44.2%	35.9%
	2016 Estimated Asian or Pacific Islander	2.2%	1.4%	1.4%
	2016 Estimated American Indian or Native Alaskan	0.3%	0.3%	0.3%
	2016 Estimated Other Races	3.0%	3.4%	4.0%
	2016 Estimated Hispanic	2.4%	2.3%	3.3%
INCOME	2016 Estimated Average Household Income	\$27,375	\$42,663	\$52,461
	2016 Estimated Median Household Income	\$16,946	\$30,725	\$39,049
	2016 Estimated Per Capita Income	\$14,947	\$19,839	\$23,602
EDUCATION (AGE 25+)	2016 Estimated Elementary (Grade Level 0 to 8)	5.9%	4.9%	4.4%
	2016 Estimated Some High School (Grade Level 9 to 11)	15.6%	13.3%	11.1%
	2016 Estimated High School Graduate	33.7%	29.5%	29.1%
	2016 Estimated Some College	25.1%	23.3%	23.2%
	2016 Estimated Associates Degree Only	4.4%	6.0%	6.8%
	2016 Estimated Bachelors Degree Only	8.4%	12.8%	14.3%
	2016 Estimated Graduate Degree	6.9%	10.1%	11.1%
BUSINESS	2016 Estimated Total Businesses	4,486	9,782	15,008
	2016 Estimated Total Employees	100,638	172,825	233,723
	2016 Estimated Employee Population per Business	22.4	17.7	15.6
	2016 Estimated Residential Population per Business	3.6	12.7	18.2

