



- Mini Horse Farm on 12.03 acres that could be a potential residential development property if adjoining parcels can be acquired. The adjacent 4.84 acres ± can be bought to create a 17 ± acre development site.
- Includes a 3 BR 2 BA home with approximately 2,336 heated square feet
- 2 Car garage
- 3 stall barn with approximately 950 SF
- Currently on well and septic
- Asking \$750,000

Link to aerial video: <https://player.vimeo.com/video/492230638>

For more information, please contact:

**Vernon Averett** | [vaverett@aol.com](mailto:vaverett@aol.com) | Office 919-493-0395

**Mark Micol** | [mark.micol@westandwoodall.com](mailto:mark.micol@westandwoodall.com) | Cell 919-414-3159



# PICKETT SPROUSE

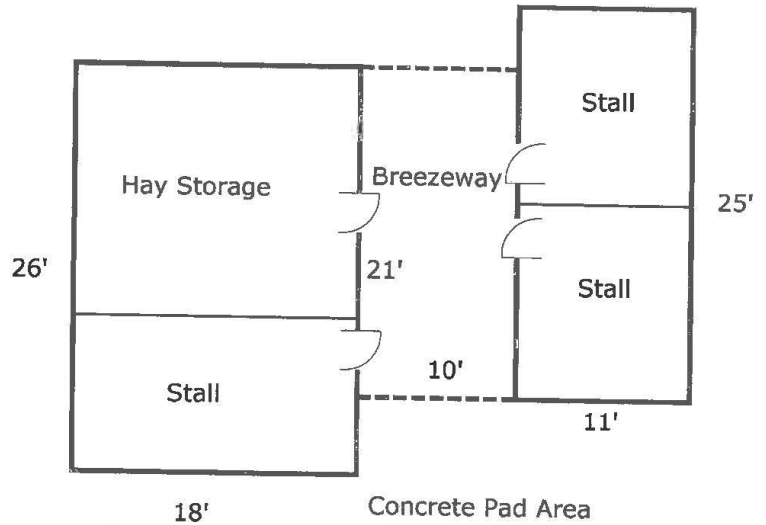
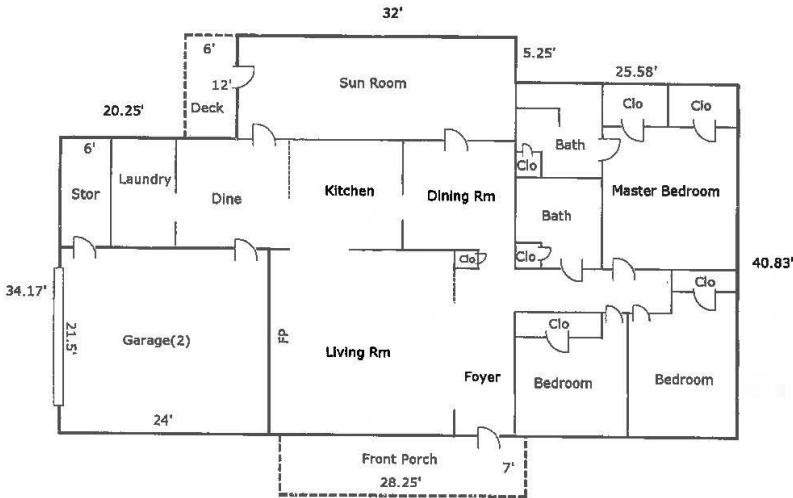
COMMERCIAL  
REAL ESTATE



# FOR SALE

309 Patterson Road  
Durham, NC

A WEST & WOODALL COMPANY



For more information, please contact:

**Vernon Averett** | [vaverett@aol.com](mailto:vaverett@aol.com) | Office 919-493-0395

**Mark Micol** | [mark.micol@westandwoodall.com](mailto:mark.micol@westandwoodall.com) | Cell 919-414-3159

Visit us at [PickettSprouse.com](http://PickettSprouse.com)

INFORMATION HEREIN IS SUBJECT TO VERIFICATION BY ALL PARTIES AND MAY CHANGE WITHOUT NOTICE.

1901 HILLANDALE ROAD, SUITE 100 • DURHAM, NC 27705 • 919.493.0395 • [WWW.PICKETTSPROUSE.COM](http://WWW.PICKETTSPROUSE.COM)