

**PICKETT
SPROUSE**

COMMERCIAL
REAL ESTATE



FOR LEASE

**Hillsborough Flex/ Warehouse Space
620 VALLEY FORGE ROAD, UNIT B
HILLSBOROUGH, NC**

A WEST & WOODALL COMPANY



Video: https://youtu.be/KaeBu1_AL44

Description: Unit B contains $\pm 2,000$ SF of office/warehouse space. Warehouse has 14" to 16" ceilings and drive-in door access.

Features: Unit B is fully heated and air-conditioned. Includes reception area, four offices, restroom and shared loading dock at end of building.

Zoned: High Intensity Commercial (HIC)

Price: \$2,000/mo.
Available August 1, 2021
Tenant pays utilities and janitorial

For more information, please contact:

Emilee Collins | emilee.collins@westandwoodall.com | 919-730-7040

Mark O'Neal, CCIM | mark.oneal@westandwoodall.com | 919-287-3051

Visit us at PickettSprouse.com

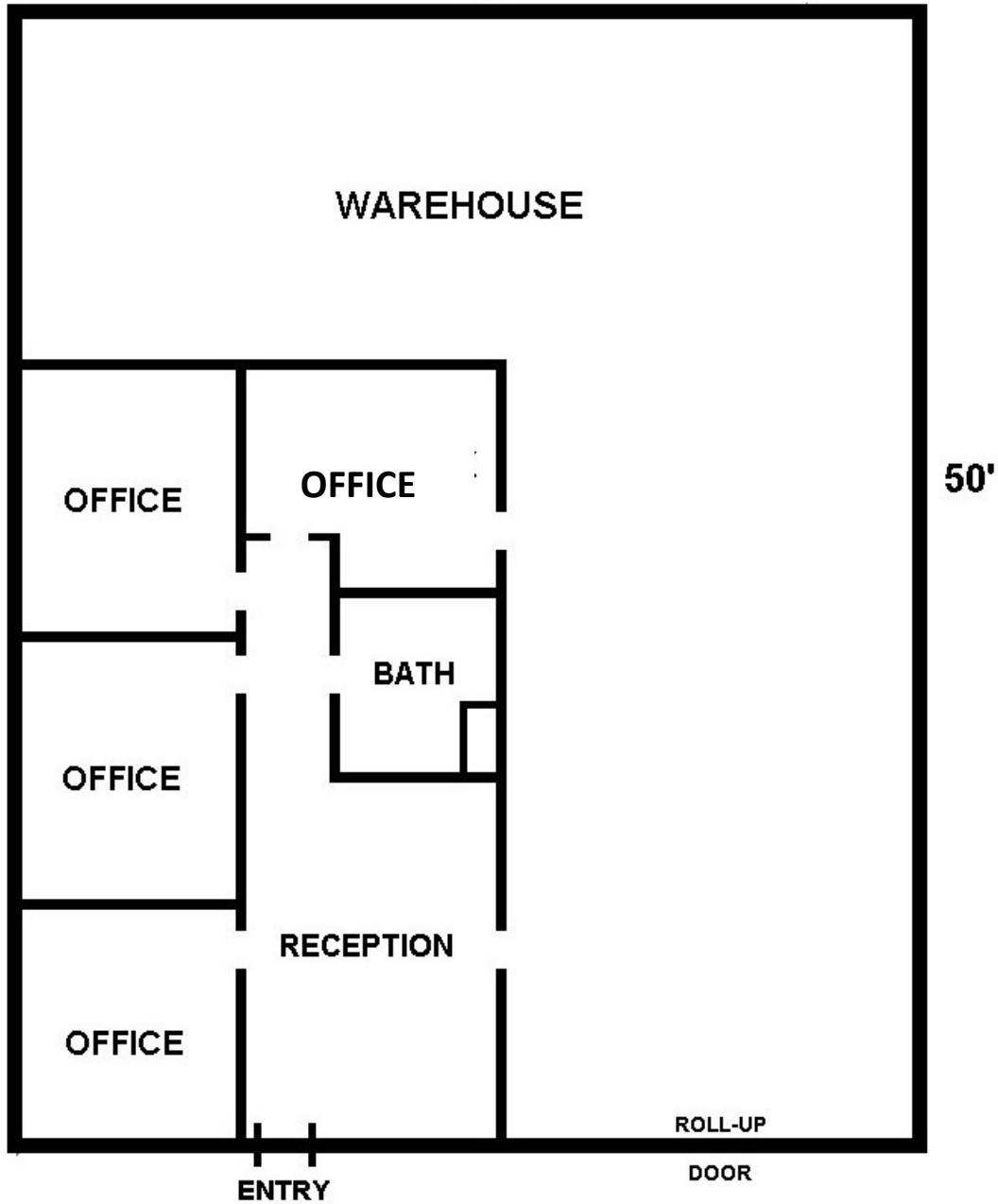
INFORMATION HEREIN IS SUBJECT TO VERIFICATION BY ALL PARTIES AND MAY CHANGE WITHOUT NOTICE.
1901 HILLDALE ROAD, SUITE 100 • DURHAM, NC 27705 • 919.493.0395 • WWW.PICKETTSPROUSE.COM



FOR LEASE

Hillsborough Flex Space
620 VALLEY FORGE ROAD, UNIT B

40'



Directions: From I-85 take exit 165; go north on NC 86 for 1/3 mile and turn left onto Valley Forge Road. Property is on the right.

For more information, please contact:

Emilee Collins | emilee.collins@westandwoodall.com | 919-730-7040
Mark O'Neal, CCIM | mark.oneal@westandwoodall.com | 919-287-3051

Visit us at PickettSprouse.com

**PICKETT
SPROUSE**
COMMERCIAL
REAL ESTATE



A WEST & WOODALL COMPANY

FOR LEASE

Hillsborough Flex Space
620 VALLEY FORGE ROAD, UNIT B
HILLSBOROUGH, NC



For more information, please contact:

Emilee Collins | emilee.collins@westandwoodall.com | 919-730-7040
Mark O'Neal, CCIM | mark.oneal@westandwoodall.com | 919-287-3051

Visit us at PickettSprouse.com