

**PICKETT
SPROUSE**

COMMERCIAL
REAL ESTATE



FOR LEASE

**126 W. King Street
Downtown Hillsborough, NC**

A WEST & WOODALL COMPANY



Leasing private offices in Downtown Hillsborough where you can mix business and pleasure with the quaint retail scene and natural resources like The Riverwalk. Centrally located for client meetings. One block away from the Orange County Courthouse. Convenient to I-85 & I-40, RDU and RTP.

Office 3A — 357 SF : \$600/month + \$40/month utilities

Office 6A — 132 SF : \$400/month + \$40/month utilities

Office 7A — 144 SF : \$400/month + \$40/month utilities

EMILEE COLLINS

emilee@westandwoodall.com

919-730-7040

MARK O'NEAL, CCIM

mark.oneal@westandwoodall.com

919- 287-3051

Visit us at pickettsprouse.com

INFORMATION HEREIN IS SUBJECT TO VERIFICATION BY ALL PARTIES AND MAY CHANGE WITHOUT NOTICE.
1901 HILLANDALE ROAD, SUITE 100 • DURHAM, NC 27705 • 919.493.0395 • WWW.PICKETTSPROUSE.COM

**PICKETT
SPROUSE**

COMMERCIAL
REAL ESTATE



A WEST & WOODALL COMPANY

FOR LEASE

126 W. King Street
Downtown Hillsborough, NC



Please contact:

EMILEE COLLINS | emilee@westandwoodall.com | 919-730-7040
MARK O'NEAL, CCIM | mark.oneal@westandwoodall.com | 919 - 287-3051
Visit us at pickettsprouse.com

INFORMATION HEREIN IS SUBJECT TO VERIFICATION BY ALL PARTIES AND MAY CHANGE WITHOUT NOTICE.
1901 HILLDALE ROAD, SUITE 100 • DURHAM, NC 27705 • 919.493.0395 • WWW.PICKETTSPROUSE.COM

**PICKETT
SPROUSE**

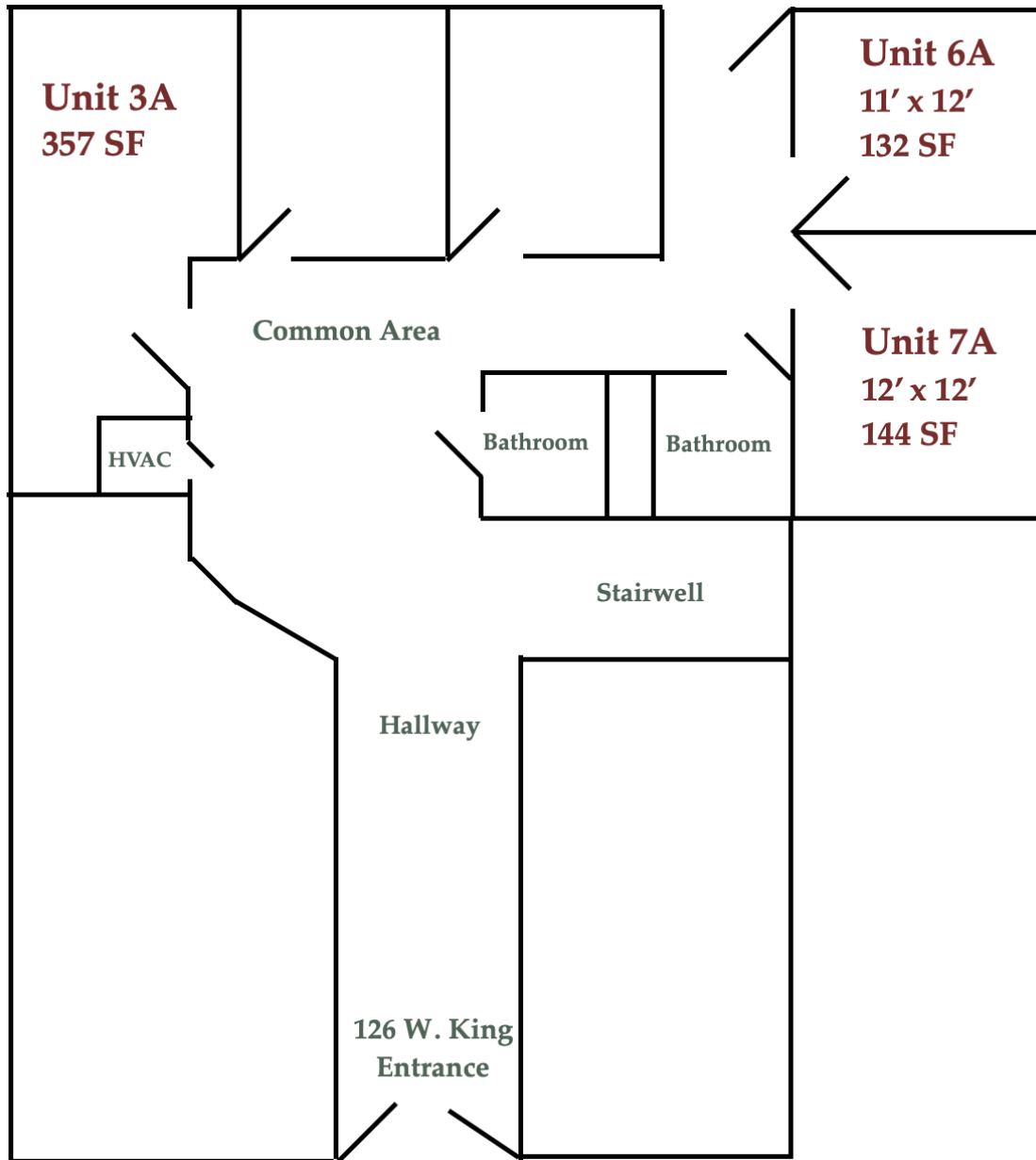
COMMERCIAL
REAL ESTATE



A WEST & WOODALL COMPANY

FOR LEASE

126 W. King Street
Downtown Hillsborough, NC



Please contact:

EMILEE COLLINS | emilee@westandwoodall.com | 919-730-7040
MARK O'NEAL, CCIM | mark.oneal@westandwoodall.com | 919 - 287-3051
Visit us at pickettsprouse.com