

**PICKETT
SPROUSE**

COMMERCIAL
REAL ESTATE

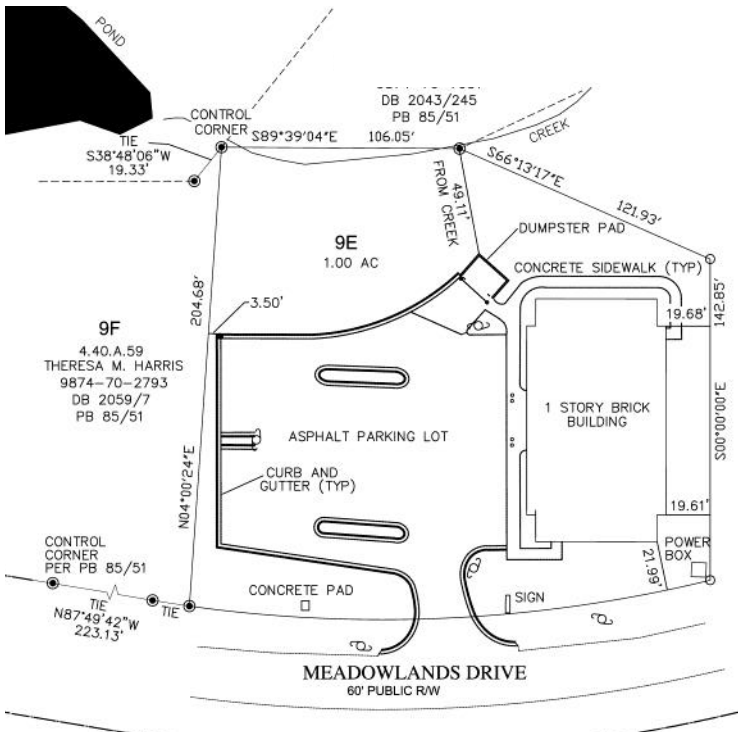


OFFICE INVESTMENT PROPERTY FOR SALE

A WEST & WOODALL COMPANY



**405 MEADOWLANDS DR
HILLSBOROUGH, NC**



6,500 SF former medical office building currently housing the Orange County Government Finance Department. Fresh interior upon County occupancy. 32 parking spaces on 1.0 acres. 8+% CAP rate.

Easy access to Interstates 85 & 40.

Legal - Pin# 9874-70-5773
DB 2313/131 PB 102/190
Zoned HIC.

For Sale: \$975,000

Mark O'Neal, CCIM

mark.oneal@westandwoodall.com.
919-287-3051

Robert M. Sprouse, MAI

robert@pickett-sprouse.com
919-287-3050

Visit our website at PickettSprouse.com

INFORMATION HEREIN IS SUBJECT TO VERIFICATION BY ALL PARTIES AND MAY CHANGE WITHOUT NOTICE.
1901 HILLDALE ROAD, SUITE 100 • DURHAM, NC 27705 • 919.493.0395 • WWW.PICKETTSPROUSE.COM



405 MEADOWLANDS DR HILLSBOROUGH, NC

