

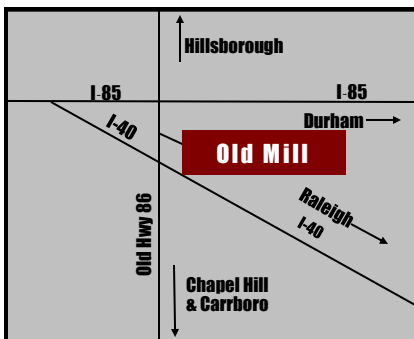


# OLD MILL BUSINESS PARK

HILLSBOROUGH, NORTH CAROLINA

Link to aerial video - <https://youtu.be/xvM78nqj1vg>

## COMMERCIAL BUILDING LOTS FOR SALE



**Zoning:** EDD Primary, Economic Development District allows uses from office to light manufacturing.

**Utilities:** Hillsborough water & sewer

**Location:** Old Mill Business Park is located on Old NC 86 (S. Churton Street) midway between I-40 and I-85. East on Millstone Drive to left on Leah Drive.

**Size:** 1.78 acres with some rock fill on frontage

**919-493-0395**

Mark O'Neal - CCIM - [mark.oneal@westandwoodall.com](mailto:mark.oneal@westandwoodall.com)  
Emilee Collins - [emilee@westandwoodall.com](mailto:emilee@westandwoodall.com)  
Visit us on the web at [www.PickettSprouse.com](http://www.PickettSprouse.com)



**919-493-0395**

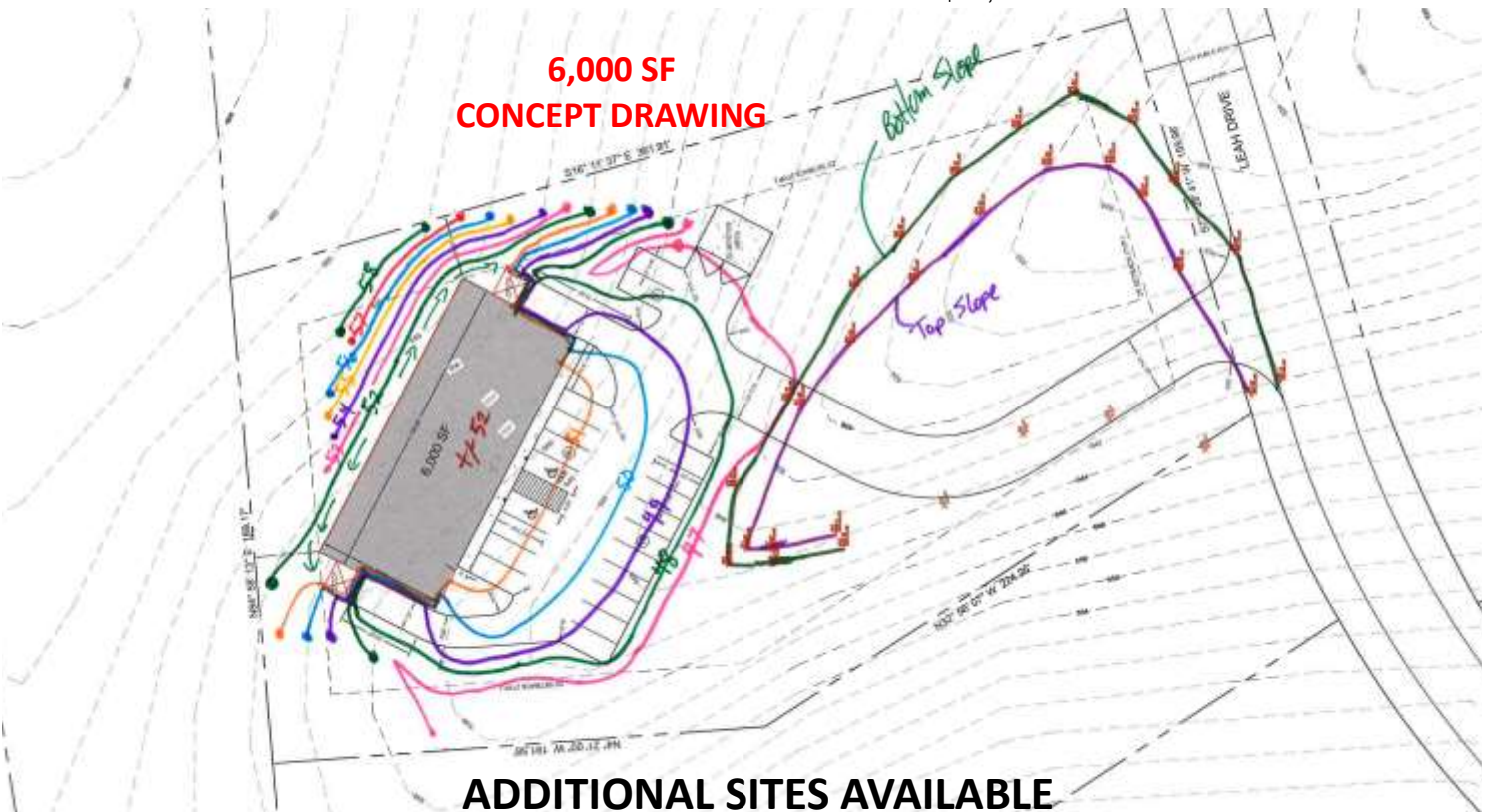
Mark O'Neal - mark.oneal@westandwoodall.com  
Emilee Collins-emilee@westandwoodall.com



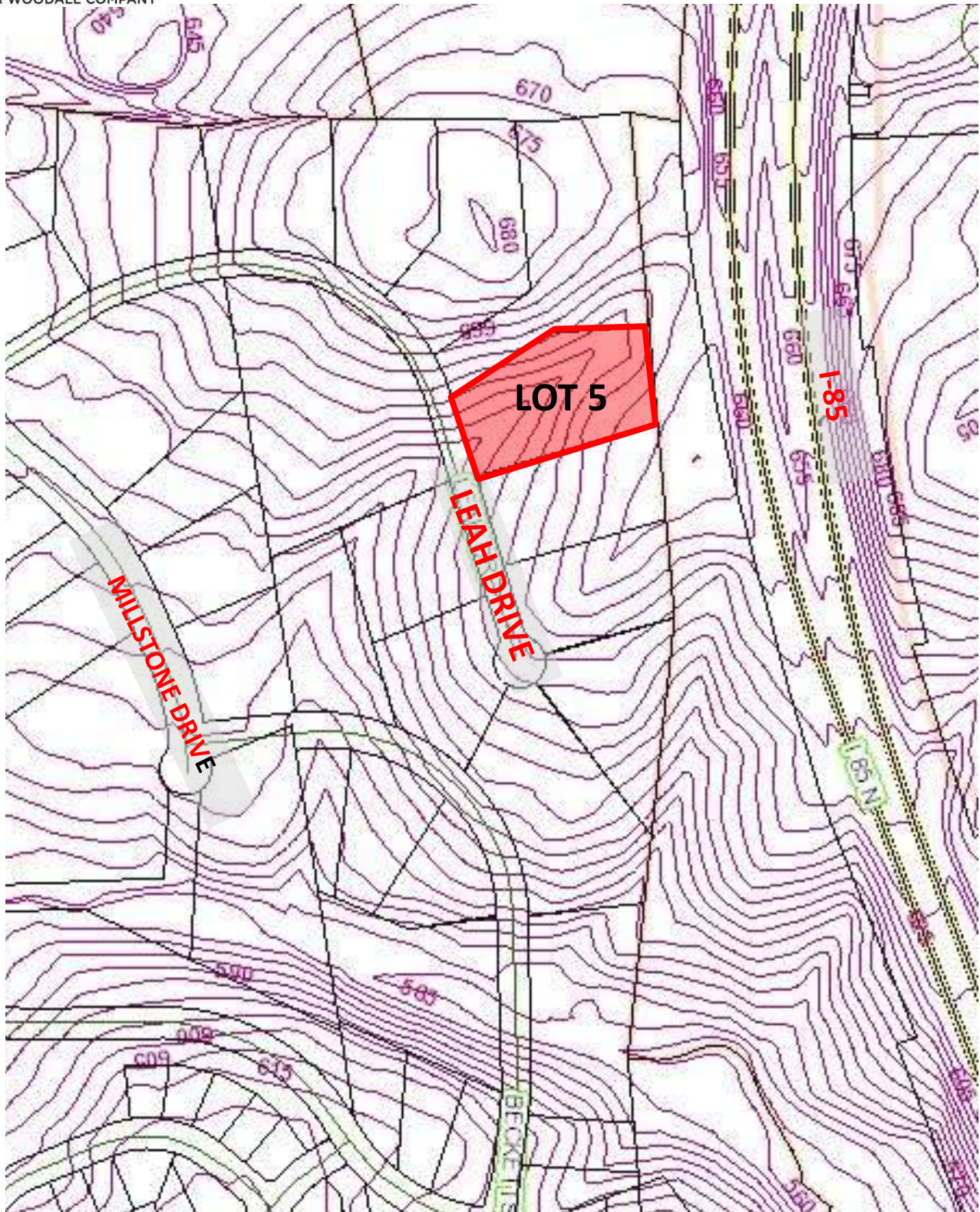
**LOT #                      ACREAGE                      PRICE**

5                                      1.78                                      \$90,000

**6,000 SF  
CONCEPT DRAWING**



**ADDITIONAL SITES AVAILABLE**



### Additional Sites Available